



**Klamath Junior High News**

By BEVERLY WESTLUND  
The second national assembly was held recently featuring Kurt Singer, a well-known foreign newspaper correspondent and writer, who was a spy for the United States during World War II. He talked on "Spies and Traitors." Report cards were given out November 10. Students having a 1.5 average are eligible for the honor society. Honor students will be announced later.

Open house for parents was held November 10 during National Education Week. Parents visited classes during the afternoon and tea was served afterwards in the cafeteria.

Intramural volleyball will start soon. Home rooms have elected captains and are organizing their teams. There must be at least three girls on each team.

Premont grade and junior high students' glee clubs will present "Autumn Varieties," a Thanksgiving program, Friday, November 19, at 7:30 p.m. This program will take the place of the regular Christmas program. All parents are invited to attend.

The magazine drive to raise money for student body activities ended Monday, November 15. The five top salesmen were Lynne Farley, \$121.75; Jane Swaney, \$107; Brian Conforti, \$80.50; Charmion Biehn, \$77.15; and Bruce Black, \$71.75.

Honorable mention went to Shocky Hungate, James Norland, Morgan Johnson, Peggy Seideman and Kathy Harris. They all sold over \$40 worth of subscriptions.

Even though the school didn't reach its goal, the drive was considered a huge success.

**APPOINTMENT**

SANTIAGO, Chile (AP)—President Carlos Ibanez has named Arturo Olavarría, a staunch Communist foe, as interior minister to head a new Chilean cabinet. He replaces Gen. Abdon Parra.

**New Appliance Store Opens**

A new appliance store, to be named by someone in the Klamath Basin, has opened at 11th and Walnut, location of the former Thompson's Kitchen Center.

Open house is being held from 9 a.m. to 9 p.m. today, Friday and Saturday.

The store, owned by Suburban Lumber Company which has been operated here for more than 10 years by W. L. (Bill) Bullard, offers a complete kitchen-planning service without obligation. Movies on kitchen planning will be shown to interested persons each evening after 9 p.m. during the three-day grand opening. Kitchen engineers are available for free consultation on new kitchens or remodeling problems.

Bill Mauldin, who has been a Southern Pacific employee had an appliance and automobile salesman here for five years, has been named manager. Prior to coming to Klamath Falls, he was manager of an appliance store in Denver.

Several factory representatives and distributors of lines carried by the new store are here for the special opening. Among them are Jim Hartman, from the Canton, Ohio, headquarters of Republic Steel Kitchens; Dale Beamer of the Portland office of Marshall-Wells; William McHarness, Norge Appliances representative from Portland; Chet Jines, Sylvania distributor from Medford, and Don Ryan, representative of CBS Columbia Television, from Ry-Bar Distributing Company, Portland.

The public is invited to come in and get acquainted with Mauldin and his staff and meet the national representatives. Coffee and doughnuts are being served all day. There is plenty of free parking, courtesy of the Cascade Hotel.

**Motorists Told To Carry Chains**

This is the time of year to check your chains and carry them in the car when driving through the mountains, is the advice of the local Oregon State Motor Association.

According to the AAA report from the state highway department, roads are open in all directions out of Klamath Falls, but the office warns that weather can change quickly and the general overcast condition on the Pacific Coast can mean snow and ice at high elevations in a matter of hours.

**Game Violator Fined By Judge**

DORRIS — George Joseph Stewart, 65, of Rio Linda, California, was fined \$100 for shooting a whistling swan when he appeared before Judge Les Chase here. Stewart was arrested by federal game officers.

**Here's why GALLO TASTES SO MUCH BETTER than other wines**



Discover Gallo wine... crushed from select varieties of the finest grapes grown anywhere. Discover wine blended and mellowed the Gallo master vintners way to assure flavor above all.

Try your favorite Gallo wine today. See for yourself that Gallo does taste better.

**GALLO brings you the magic of fine wine**

"California Wines: Sherries • Ports • Muscatel • Vino Pailano • White and Red Table Wines • E. & J. Gallo Winery, Modesto, California

**PENNEY'S**  
ALWAYS FIRST QUALITY!

COME IN, FRIDAY! SATURDAY! BIG SAVINGS!

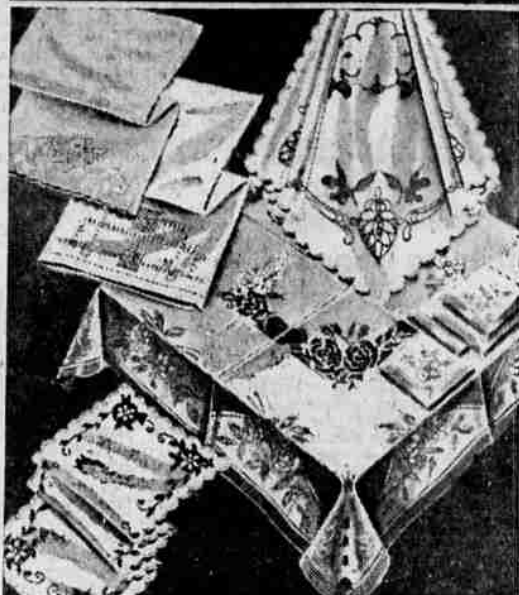
**PRE-HOLIDAY**



**Buys for NOW! And for Gift-Giving, too!**

**ELEVATOR SERVICE TO ALL FLOORS**  
MON.-THURS.—9:30 A.M.-5:30 P.M.  
FRI.—9:30 A.M.-9:00 P.M.  
SAT.—9:00 A.M.-5:30 P.M.

**SPECIAL BUY—ACT FAST!**



**GIFT ASSORTMENT... IMPORTED LINENS!**

Choose luncheon cloths, bridge sets, table cloths, pillow cases, scarfs, 4-pc. vanity sets—all delicately embroidered, appliqued or hand worked. All machine washable. Beautiful gifts!  
**1.00** each

BALCONY



**THRIFTY**

...as a soup bone!

**—that's PRES-TO-LOGS**

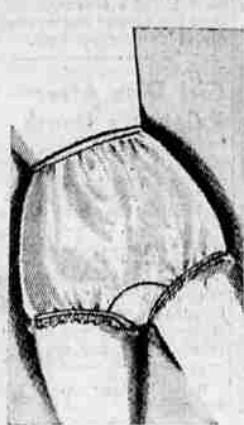
THE ECONOMICAL, CLEAN, CONVENIENT FUEL



GET 'EM FROM

**BOB'S ASSOCIATED STATION**

Cor. Oregon Ave. & Biehn Sts. Phone 2-9347



**FOR GIRLS LACE TRIMMED BRIEFS**

Lace trimmed briefs for girls styled with elasticized leg openings. Pastels and white in rayon cotton blend. Sizes 2-14.

**3 for 1.00**

SECOND FLOOR



**Men's Nylon Blend Whipcord Cruisers**

• SIZES 38-46

**7.00**

**JACKETS**

**5.00**

COLORS — Sage Grey, FOREST GREEN  
MAIN FLOOR

SHOP PENNEY'S

**TOY LAND** THIRD FLOOR



**27 INCH JUMBO CUDDLY BEAR**

27-inch jumbo cuddly bear! He's made of soft rayon plush stuffed with cotton. Non-crack vinyl nose. Rolling eyes. Brown and gold, Black and white.

**2.98**

**ENTIRE STOCK**

Winter Coats..

REDUCED

18.00

20.00

25.00

30.00

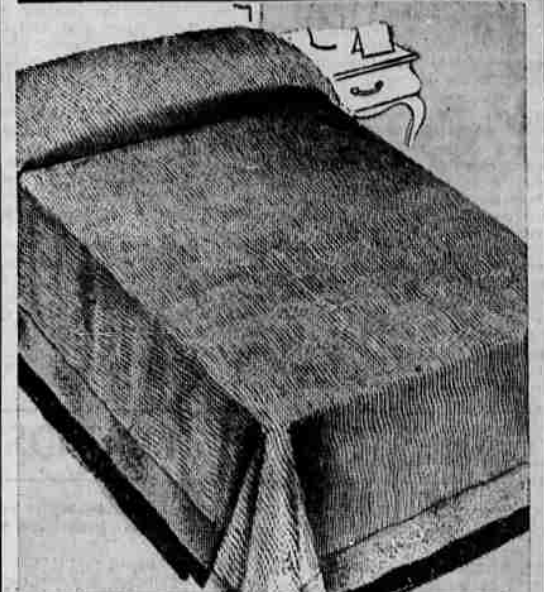
35.00

SAVE NOW!



SECOND FLOOR

**SPECIAL BUY—ACT FAST!**



**SPECIAL CHENILLE GIFT BEDSPREADS**

Ideal for gift giving, terrific to own! Rich chenille bedspreads have rounded corners, banded edge. Machine washable, no ironing needed! Vibrant colors!

**5.00** full or twin size

BASEMENT



**Men's Cotton Heavyweight Sweat Shirts**

**1.00** sizes 36-46

Highly absorbent cotton fleece lined sweat shirts. They have set in sleeves and a V-insert. First quality for action-free sports wear. Silver grey, at Penney's low prices.

MAIN FLOOR



**MEN'S WHIPCORD TROUSERS**

**7.00**

• Broken Sizes  
• Nylon Blend  
• For any Job  
• 19-oz. Fabric

MAIN FLOOR

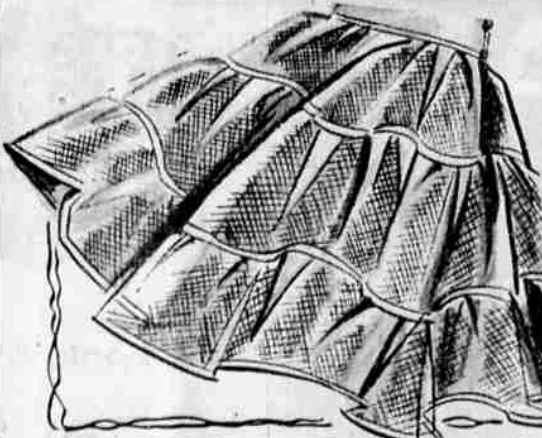
**SHOE CLEARANCE**

- MEN'S DRESS SHOES **4.00**
- WOMEN'S DRESS AND CASUAL SHOES **2.00**
- 1 GROUP LADIES CASUALS **1.00**
- BOYS RUBBERS **50¢** Sizes 3-5 1/2

BASEMENT

**RUMMAGE - REMNANTS - ODDS & ENDS**

SHOP EARLY FOR A BETTER SELECTION... MAIN FLOOR



**LADIES NYLON MESH CAN-CAN SLIPS**

• SIZES S-M **2.00**

MAIN FLOOR