

SAFEGWAY'S Annual October SALE!

CANNED FOODS NOW FEATURED



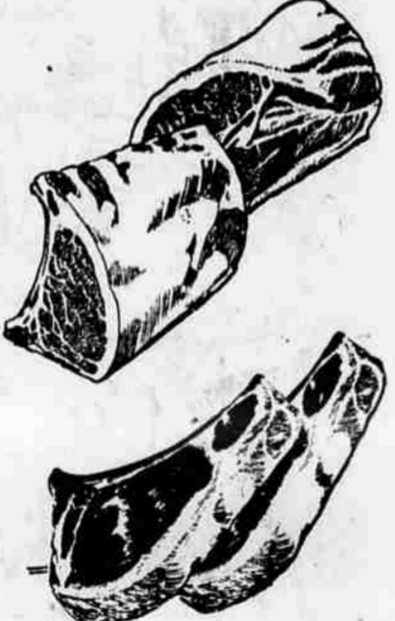
- Reg. 17c **Grapefruit** Highway broken Segments 8 No. 303 Cans \$1
- Reg. 24c **Fruit Cocktail** Hostess Delight 5 No. 303 Cans \$1
- Reg. 25c **Tomato Juice** Sunny Dawn 5 46-oz. cans \$1
- Reg. 23c **Green Beans** Santiam fancy cut 5 No. 303 Cans \$1
- Reg. 21c **Del Monte Peas** Early Garden 5 No. 303 Cans \$1
- Reg. 23c **Torpedo Tuna Fish** Grated Tuna 5 No. 1/2 cans \$1

- Reg. 18c **Applesauce** Highway brand — No. 303 cans 6 for 89c
- Reg. 31c **Del Monte Peaches** Sliced yellow clings — Big No. 2 1/2 can 27c
- Reg. 29c **Bartlett Pears** Saled size pieces — Sundown brand, No. 2 1/2 can 29c
- Reg. 33c **Apricot Halves** Highway brand — golden apricots, No. 2 1/2 can 29c
- Reg. Value **Green Beans** Briargate, fancy pack cut beans, No. 303 can 19c
- Reg. 15c **Green Beans** Gardenside brand, cut beans, No. 303 cans 2 for 25c
- Reg. 13c **Cream Corn** Gardenside — sweet golden corn, No. 303 can 10c
- Reg. 17c **Fancy Peas** Sugar Belle — popular sieve size, No. 303 can 2 for 29c
- Reg. 2/25c **Sweet Peas** Gardenside brand — stock up! No. 303 can 10c
- Reg. 15c **Fancy Pumpkin** Moonbeam brand — Big No. 2 1/2 can ONLY 10c
- Reg. 2/25c **Libby Pumpkin** Fancy pack pumpkin, No. 303 can ONLY 10c
- Reg. 14c **Fancy Spinach** Emerald Bay — healthful — No. 303 can 2 for 25c
- Reg. 59c **Dill Pickles** Famous Columbia brand — 1 1/2 gallon jar 49c
- Reg. 35c **Star Kist Tuna Fish** Popular chunk style, easy mixing — No. 1 1/2 can 29c

Sensational Savings in Our Meat Section, featuring a big

PORK SALE!

- Pork Loin Roast** Loin or Rib end Cuts Avg. weights 2 1/2 to 3 1/2 lbs. 47c lb.
- Pork Loin** HALF OR WHOLE A very special buy on whole or half loins for the locker or home-freezer 55c lb.
- Pork Loin Chops** Thick, center cut chops from meaty pork loins 69c lb.
- Leg of Pork Roast** With shank removed! fresh hams — the roast that's usually smoked 59c lb.
- Smoked Hams** 12 to 14-lb. average—Fancy Quality, sugar-cured hams—Half or whole at this price 55c lb.



Lost a Money-Saving Values in "U.S. Choice" Steer Beef

- Pork Spare Ribs** Fresh - frozen - average weights 2 lbs. and less 59c lb.
- Ground Beef** Pure beef - ground fresh daily 39c lb.
- Corned Beef** Meaty, boneless pieces of lb. choice brisket - Any size pc. 49c
- Whiting Fish** Captain's choice 1 1/2-lb. pkg. headed and drawn 35c
- Fresh Oysters** Selected Pacific Oysters Pint Med. sizes 65c
- Fryers** Fresh - Cut up, Pan Ready 55c lb.
- CHUCK ROAST** U.S. Choice Grade Beef Arm Cut 59c Blade Cut 57c lb.
- T-BONE STEAKS** U.S. Choice Grade beef Cut thick for broiling or frying 1 19c lb.
- TOP SIRLOIN STEAKS** U.S. Choice Grade beef All meat! No bone! 1 35c lb.
- TENDERLOIN STEAKS** U.S. Choice Grade beef All meat! 1 69c lb.
- SIRLOIN TIP STEAKS** U.S. Choice Grade beef All meat! 1 98c lb.
- ROUND STEAKS** U.S. Choice Grade beef Center cuts of steer beef rounds 1 89c lb.
- BEEF RIB ROAST** U.S. Choice Grade beef The 'King' of roasts 1 79c lb.

THROUGH SUNDAY OCTOBER 17 AT SAFEWAY STORES ALL OVER OREGON AND SOUTHWEST WASHINGTON

- Reg. 29c **Pineapple Juice** LaLani 4 46-oz. cans \$1
- Reg. 29c **Tuna Fish** Torpedo Chunk Style 4 No. 1/2 cans \$1
- Reg. 27c **Cling Peaches** Highway brand 4 No. 2 1/2 cans \$1
- Reg. 35c **Fleet Mix** For fluffy biscuits everytime 3 40-oz. pkgs. \$1
- Reg. 35c **Peaches** Freestone Lady Elberta 3 No. 2 1/2 cans \$1
- Reg. 39c **Orange Juice** Full O'Gold 3 46-oz. cans \$1
- Reg. 39c **Salmon** Gold Cove brand 3 No. 1 cans \$1
- Reg. 6/53c **Dog Food** Pooch or Playfair 12 cans \$1
- Reg. 3/27c **Ivory Soap** Medium Size bars 13 for \$1
- Reg. 18c **Cream Corn** Del Monte Golden Bantam 7 No. 303 cans \$1
- Reg. 21c **Tomatoes** Gardenside brand 6 No. 303 cans \$1
- Reg. 2/25c **M.D. Tissue** Strong Texture 10 rolls \$1

157-Recipe HARVEST COOKBOOK

included in October Family Circle MAGAZINE A 30¢ value for 5¢

Sensational Savings in Our Produce Section, Featuring

TOKAY GRAPES

Here they are — the big red grapes that make your table festive. Safeway has the pick of the harvest for you. Each grape tantalizingly sweet and crisp to bite into. Yes, Safeway's the place to buy grapes.

lb. 10c



- Delicious Apples** Schoolboy - - Delicous Fine eating apple 4-lb. pkg. 59c
- Jonathan Apples** Schoolboy Jonathans All-Purpose 4-lb. pkg. 49c
- Golden Sweet Corn** 12 ears 49c
- Grapefruit** Florida Ruby Red 3 for 29c

- Bananas** Firm end ripe 1b. 20c
- Cabbage** Finest Quality 1b. 4c
- Green Peppers** 1b. 15c
- Marblehead Squash** 1b. 5c
- Danish Squash** Thick meated 1b. 5c
- Sweet Potatoes** 2 lbs. 29c

POTATOES

- Safeway Sorted, Selected Uniform
- Values Galore in all packs
- Select Premium U.S. No. 1 grade 1b. 6c
- Select Premium U.S. No. 1 10-lb. bag 59c
- Economy Pack U.S. No. 1 10-lb. sack 49c
- Netted Gems U.S. No. 1 25-lb. sack 99c
- Netted Gems U.S. No. 2 50-lb. sack 89c



CELERY

Fresh clean Pascal Celery - Crisp and Sweet. The kind that crackles when you bite down on a stalk

lb. 10c

- Tomato Catsup** Taste Tells, Fine flavor 14-oz. bottle 2 for 25c
- Dutch Mill Cheese** Sliced Pimento - Swiss or American 1/4-lb. pkg. 29c
- Franco-American** Spaghetti—Reg. 2/29c 15 3/4-oz. cans 2 for 25c
- Pickled Pigs Feet** Reg. 33c Rath Brand 14-oz. jar 29c
- Pineapple Juice** Dole Reg. 31c Fancy Quality 46-oz. cans 3 for 79c
- Lunch Box Spread** Reg. 65c a grand sandwich spread Quart 59c
- Peanut Butter** Reg. 45c Real Roast brand 20-oz. jar 39c

EMPRESS PRESERVES

Pure, Canadian Safeway brings you the very finest in Pure-Fruit preserves. Taste the flavor, taste the quality of Empress and you'll be a steadfast user.

10c EACH

AT OUR BIG DISPLAY! Just a few from our large display! Pineapple Juice, LaLani, No. 211 Sunny Dawn Tomato Juice, 300 can Garnet Diced Beets, No. 303 can Taste Tells Lima Beans, 300 can Marion Diced Carrots, No. 303 can Banjo Hominy, White or Gold, 300 can Blackeye Peas, Taste Tells, No. 300 Steinfield's Sauerkraut, 11-oz. can Kidney Beans, Taste Tells, 300 can Apricot, 2-lbs. 59c 4-lb. can 1.19 Gooseberry Preserves 2-lb. can 59c Green-Gage Plum 2-lb. can 49c Black Currant 2-lb. can 79c

Shop SAFEGWAY

The Savings Event of the Year! It's Safeway's Annual October Store-Wide Sale! Grocery Prices effective through Sun. Oct. 17... Meat and Produce Prices effective through Sun. Oct. 10

Shop SAFEGWAY