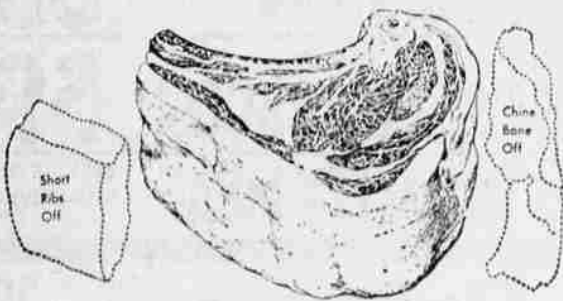


SAFEWAY MEATS
are trimmed before weighing
SO YOU SAVE MONEY

You get more good-eating meat for your money when you buy trimmed-before-weighing meats. The illustration below shows you how Safeway trims rib roast before it is displayed for sale. Result: You pay only for portion that will eat just right . . . not for excess bone, waste, and fat. Safeway regularly trims its meats this money-saving way—each cut according to its own special requirements. Start buying trimmed-before-weighing meats today and see how they help you keep your food budget in line.

Beef Rib Roast

Carefully trimmed and prepared for your oven as shown here



U.S. Government "Choice" grade—well-aged beef

79^c
lb.

More Values for you in Carefully-trimmed, "U.S. Choice" Grade Beef!

ROUND STEAK

"U.S. Choice" Grade Steer Beef!
Full Round Cuts—Small round bone

85^c
lb.

SPENCER STEAK

"U.S. Choice" grade steer beef—just the meaty eye of the rib steak

\$1²⁹^c
lb.

PLATE BEEF BOIL

"U.S. Choice" grade beef—for an economical, tasteful Stew!

23^c
lb.

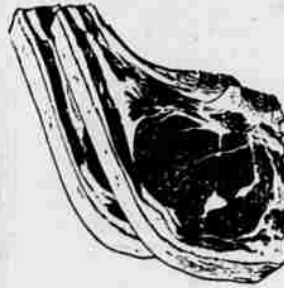
BEEF POT ROAST

"U.S. Choice" Blade Cut **49^c** Arm Cut **55^c** lb.

55^c
lb.

Once again, **SAFEWAY** brings you
Sensational Values on CALF!

Every Cut Guaranteed Tender and Juicy -- Every Cut is U.S. GOVERNMENT "CHOICE" GRADE



Rib Chops **59^c**
lb.
or "Large Loin" cuts of this ever-so-tender, young calf —at this exceptionally low price!

Calf Shoulder Roast Meaty blade cuts for pot roasting **45^c** lb.

Calf Shoulder Roast Small bone, Arm cut **49^c** lb.

Calf Loin Chops Small T-Bone cuts! **79^c** lb.

Calf Breast for Stew For a real He-Man stew **23^c** lb.

Miscellaneous Values for you in Our Guaranteed Meats!

Beef Liver from Young Animals lb. **49^c**

Sliced Bacon Standard Layer Pack lb. **59^c**

Pure Pork Sausage Morrell's lb. **49^c**

Fresh Halibut Steaks Firm slices lb. **55^c**

Fillet of Red Snapper No bones lb. **35^c**

Breaded Shrimp Pan-ready 12-oz. **65^c**

Fancy 12 to 16-lb.
Sugar-Cured HAMS
Your Choice Half or whole **69^c** lb.

FREESTONE PEACHES
Sundown—salad size pieces



4 No. 2 1/2 Cans **\$1.00**

CHERUB MILK



2 14-oz. cans **19^c**

SLEEPY HOLLOW
The table syrup with the Real Maple flavor!



24-oz. bot. 49^c

White Magic or White King SOAP POWDER



Giant Pkg. 45^c

Morrell's Snack For a perfect sandwich 12-oz. can **39^c**

White Star Tuna Fish Famous Bite Size No. 1/2 can **33^c**

Karo Syrup Blue Label 1 1/2 lb. **24^c** Red Label 1 1/2 lb. **25^c**

Kleenex Facial Tissue 300 Count pkg. **20^c**

Paper Napkins White-Zee 80 count 2/25^c

Gelatins Jell-Well - 6 flavors pkg. **4/25^c**

Gelatins Jello - 6 flavors 2 pkgs. **15^c**

T-V Candies Roxbury 10-oz. **39^c**

Marshmallows Fluff-i-est lb. **31^c**

Colgate Dental Cream large **27^c**

Colgate Dental Cream Econ. **63^c**

Colgate Dental Cream Giant **47^c**

Ice Cream Snow Star Quart carton **49^c** Half Gal. **89^c**

Cake Mixes Pillsbury, Betty Crocker, Swansdown pkg. **25^c**

Frozen Lemonade Bel-Air 6-oz. can **15^c**

Western Beer 6 cans **\$1** 12-oz. cans **17⁹**

Canterbury Tea Bags Pkg. 48 bags **56^c**

Wilson Chopped Beef 3 12-oz. cans **\$1**

Pilgrim Aspirin 100 count **19^c**

Alka Seltzer Small Size 29^c 1ge. **54^c**

Kitchen Craft Flour 10-lb. **95^c**

Sno-White Salt 5-lb. sack **19^c**

Grape Juice Tea Garden 24-oz. **37^c**

Apricot Nectar Highway 46-oz. **37^c**

Boy-ar-dee Spaghetti and meat balls 2 1/2 lbs. **59^c**

Dennis Chicken Whole 3 1/4 lb. **1.29**

Mayonnaise Nu' Made Qt. **67^c**

Wesson Oil Mild Flavor Quart bot. **69^c**

Mayday Oil Neutral in flavor Quart bot. **67^c**

Royal Satin All-Purpose Shortening 3-lb. can **83^c**

Crisco Favorite Shortening 3-lb. can **89^c**

Shop  **SAFEWAY**

Camay Soap Toilet Soap Reg. bars 3 for 25^c	Palmolive Toilet Soap Bath Size 2 bars 25^c	Camay Soap Toilet Soap Bath Size 2 bars 25^c	Lux Soap Toilet Soap Reg. bars 3 for 25^c	Lux Soap Toilet Soap Bath Size 2 bars 25^c
---	---	--	---	--