

STEEL FRAMEWORK of a steel cattle barn on the Tulelake-Butte Valley fairgrounds was ready to be lifted to position by this crane. In the background, comfort station nears completion.

Senate Committee Probes Military Housing Projects

WASHINGTON (AP) — The Senate Banking Committee today turned to the 1950 military housing law in its hunt for irregularities in the government's "many-sided housing program."

The committee, headed by Sen. Capehart (R-Ind.), summoned three builders who shared in a reported one-million-dollar profit in construction of the Page Manor project near the Air Force base at Wright Field in Dayton, Ohio.

The builders were identified as Link Cowan, Shawnee, Okla.; David Muss, San Antonio, Tex.; and Norman K. Winston New York City.

The military housing program, commonly known as "Wherry Act" housing after its author, the late Sen. Kenneth S. Wherry (R-Neb.), was designed to stimulate construction near military centers. It operated in much the same manner as the much-probed general postwar apartment program, which provided government insurance for loans to builders, with one significant exception:

Builders of military rental housing worked under a provision which required them to certify to the Federal Housing Administration that their costs of construction were more than the amount of their FHA-insured mortgage.

The mortgage was supposedly available on 90 per cent of building costs.

Under the general program, now expired, no certification was required. Capehart estimates that under this section of the law builders reaped up to half a billion dollars in "windfall" profits by pocketing the difference between the loan amounts and actual lower construction costs.

One committee source, asking not to be quoted by name, said that, despite the certification requirement, builders' profits were substantial in the military housing program, which is still operating. The profits were possible, he said, by a two-corporation device which would work like this:

Corporation "A" would get the FHA-insured loan and corporation "B" would do the actual building. When the project was completed, corporation "B" would charge "A" the full amount of the mortgage as construction costs, even though costs were actually less. Then corporation "A" could certify to the FHA that all mortgage proceeds were needed to build the project.

The gimmick was that stockholders in corporations "A" and "B" would be substantially the same, the informant said.

FLOOD

HONG KONG (AP) — Communist radio Hupoh at Hankow said Monday more than a million volunteers are working day and night to stem flood waters of the Han and Yangtze rivers in Hupoh Province.

THE KING SIZE "UP" ... IS COMING!

PENNEY'S

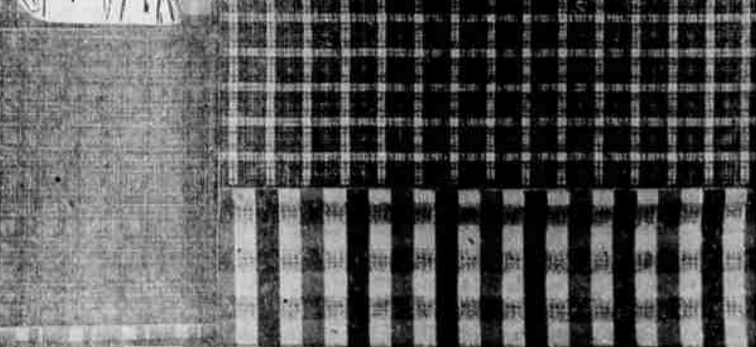
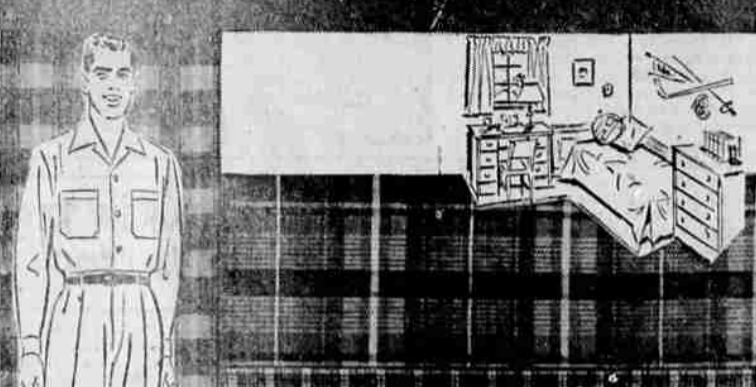
ALWAYS FIRST QUALITY!

YOUR PREVIEW OF NEW FALL FASHIONS!

New Fall Fabrics

TAKE ADVANTAGE OF PENNEY'S NEW FALL PRICES ...

For the Young in Heart ... Warm, Vibrant in Color!



WONDERFUL WOVEN GINGHAMS

GINGHAM GLAMOUR THAT NOW RESISTS WRINKLES, MACHINE WASHES!

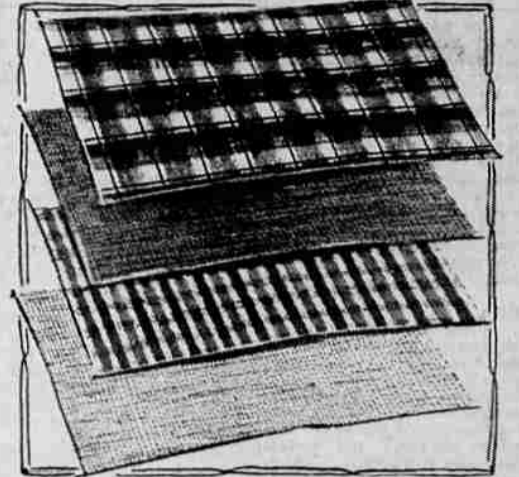
79¢ yd.

Pert, gingham plaids are on the honor roll of fashion from September to June! Gingham goes to school with class, stays at home; seems so "right-at-home," too, in smart bedroom ensembles and cafe curtains... and it makes Father and son some of the best looking sport shirts ever! Pick your favorite patterns from Scots Clan Plaids, lock-titch fancies and Bermuda-type madras plaids in this fine wrinkle resistant, soft cotton that machine washes with nary a worry about shrinkage! 35-36" wide.

BLANKET EVENT

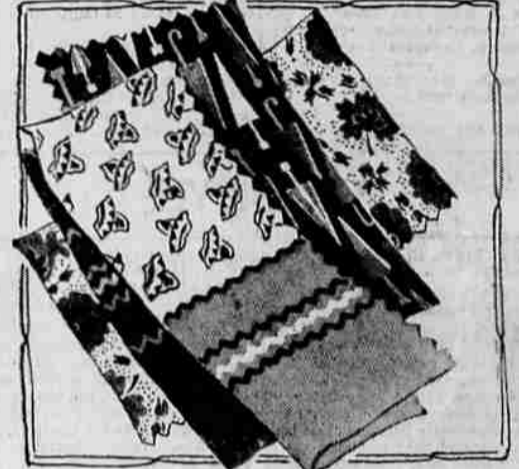
STILL GOING ON
Use Our Convenient Lay-Away Plan For The World's Finest Blankets. Your Choice of Blankets of All Types.

Elevator Service To All Floors
Store Hours:
Mon.-Fri. 9:30-5:30
Saturday 9:00-5:30



KYBER-TONE ... SOFT-TOUCH
NEW COTTONS

Feel like softest flannels, act like easy-care cottons! Sanforized! Kyber-Tone machine washes wears well, looks smart in solid colors, harmonizing plaids. It's a bright idea for match fashions, home needs! 35-36" wide. **79¢ yd.**



PENNEY'S OWN NEEDLE-N'THREAD BROADCLOTH PRINTS

The highly styled cotton that's Sanforized, Mercerized... stays smooth and lustrous thru constant wearings and machine washings. See many, many prints as "new-as-tomorrow" that will be true sewing inspirations for you! 35" wide. **49¢ yd.**
Maximum Shrinkage 1%

See how HELENA RUBINSTEIN'S NEW CONTOUR MAKE-UP changes shapes and shadows!



BEFORE Florence Cappel AFTER

her BEAUTY CONSULTANT will show you... give you a GIFT of SILK-TONE FOUNDATION... this week only



A brand new kind of bewitchcraft, this technique of make-up... doubly wonderful because it praises your contours as well as your coloring... aging shadows seem to disappear and imperfect contours seem to become ideal (see the before-and-after photos above). Helena Rubinstein's own representative will fill out a chart for you showing how to make-up professionally... how to shape your chin, show off your eyes, make smiling young lips... and she'll give you a gift of Silk-Tone Foundation to start you on new beauty. But she'll only be here through Saturday and our customers are wisely flocking in... so come soon!

Ph. 2-3475 for an appointment
CURRIN'S—for drugs
9th and Main Ph. 2-3475

BUY NOW FOR YOUR FALL SEWING NEEDS!! FRESH NEW FABRICS FOR EVERY SEWING NEED

VELVETY-SOFT

PINWALE CORDUROY

So soft, so rich, so easy to tailor you'll love it for sports togs, tent overalls, distinctive-looking home decorating too! Wonderful fabric buy... and note! Penney's corduroy is machine-washable! Jewel colors! 36-37" wide. **\$1 yd.**

See Penney's back-to-school fabrics in their full color beauty... in WOMAN'S HOME COMPANION, August issue!

PATTERNS

PENNEY'S... YOUR HOME FOR PATTERNS BY McCALL AND ADVANCE, LATEST ISSUES

DOUBLE FACED

QUILTED COTTON

Now!... a cozy quilted cotton that takes the trip to your washer with ease, emerges fluffly, soft, and warm as ever. It's a natural for warm winter skirts, jumpers, robes, all manner of home decorations too! 35-36" wide. **\$1.29 yd.**

PENNEY'S OWN HIGH COUNT RONDO PERCALE **39¢ yd.**

Whatever your sewing pleasure... here's a value-priced, high count cotton percale that's tested and proven machine washable! See the terrific new selection at Penney's now... see darling juvenile patterns, kitchen motifs, checks, dots, stripes and florals! 35-36" wide.

Watch For Penney's July Clearance STARTING FRIDAY

PENNEY'S NEW "REGULATED" COTTONS **98¢ yd.**

Rate "A" in behavior, another "A" in looks! They're machine washable, wrinkle resistant, and shrinkage controlled. And that's not all. "Regulated" cottons come in the prettiest prints ever! 35-36" wide. Solid Colors... 89¢ yd.

PENNEY'S OWN HIGH COUNT RONDO PERCALE **39¢ yd.**

NEVELTY FLANNELS IN RAYON-ACETATE **1.19 yd.**

Conversation-piece fabric in clever new designs... with raised, embroidered-look tufts! Applique-like motifs! Other interesting patterns, too! See it... see how wonderfully it lends itself to tois' swirly skirts, jumpers, smart casual fashions for you! Hand-washable; crease-resistant! 45-45" wide.

FABRIC NEWS! NOVELTUFT PRINTS **98¢ yd.**

Penney's new glamour fabric! Imagine velvety black tufting, outlined in gold color, etched on fine cotton... that's novel-tuft! Sew it into yards-wide skirts, other fashions... and remember, it's machine-washable! 35-36" wide.

PENNEY'S NEW "REGULATED" COTTONS **98¢ yd.**

DEBUTONE ACETATE TAFFETA **69¢ yd.**

Lustrous fabric you'll sew, into formal, blouses, bedspreads, drapes! It's a natural for all these, because you choose a solid color, exact-match it to a harmonizing woven pattern for a really smart effect! See it... and ask about the Debutone quality story, too... it's terrific! 44-45" wide.