

NOW'S THE TIME FOR HOME CANNING and FREEZING



WIN \$100 CASH
 For the best "Salad of the Week Recipe" using the SAFEWAY Produce Feature of the Week
 This week's item
PEACHES!

Luscious, Freestone Elberta PEACHES



We feel that this value on peaches will be the best we will be able to offer you this season. We base this assumption on the fact that the Oregon and Washington peach crop will be about fifty per cent of last year's yield due to a freeze the latter part of April.

These Early Elberta Peaches from California have a very good color and a grand taste because they have been allowed to reach full maturity on the trees. So, if you're planning to can peaches this season, we say "Now is the time to get started." You'll find a complete line of canning supplies at your Safeway, priced to save you money.

17-lb. Flat 1.69
By the Pound 15¢

- Canning Needs**
- Kerr Regular Lids, Dozen 14c
 - Certo Pectin Liquid, 8-oz. bot. 25c
 - Sure-Jell Pectin Powder, 2 pkg. 25c
 - M.C.P. Pectin, Powder, 2 pkg. 25c
 - Freeze Boxes, Kordite, 25 pints 59c
 - Freeze Boxes, Kordite, 25-quarts 75c

- Seasonings**
- Sno-White Salt 26-oz. pkg. 12c
 - Ground Cloves, Crown Colony 1 1/2-oz. Can 35c
 - Ground Mustard, Crown Colony, 4-oz. 23c
 - Garlic Salt, Crown Colony, 2 1/2-oz. 15c

- | | | | |
|--|--|---|--|
| Vine Ripened
Cantaloupes
8^c lb. | Oregon Crop
Raspberries
25^c cup | Red and Ripe
Watermelon
3^c lb. | Garden-Fresh
Beets
2 15^c bun. |
| TOMATOES Field-Ripened | | 19^c lb. | |

SAFEWAY'S
 the best place
 in town to buy
PRODUCE

LETTUCE!

At a most Sensational Low Price

Tightly headed lettuce. A swirl of crisp green leaves, around a pale green heart. Free from burned or rusty-looking tips. We'll bet this Low Price will make you want to buy a shopping basket full.

Per Head 5^c

ICE CREAM
 COTILLON GUEST ICE CREAM
 4 Delicious Flavors

PINT	QUART
29^c	55^c

- APPLES, yellow transparent lb. 19c
- SEEDLESS GRAPES lb. 29c
- CRENSHAW MELONS lb. 15c
- PERSIAN MELONS lb. 15c
- NECTARINES lb. 19c
- GREEN BEANS 2 lbs. 33c
- CELERY HEARTS each 29c
- SWEET CORN 4 golden ears 29c

Sunkist Lemons
 For refreshing Lemonade
19^c lb.

- CUCUMBERS lb. 15c
- GREEN ONIONS 3 bunches 14c
- RED RADISHES 3 bunches 14c
- JUMBO ONIONS 3 lbs. 19c
- GREEN PEPPERS lb. 20c
- POTATOES Econ. 10-lb. pk. 59c
- POTATOES 'A' Size 25-lb. sack 1.47
- POTATOES Premium lb. 8c

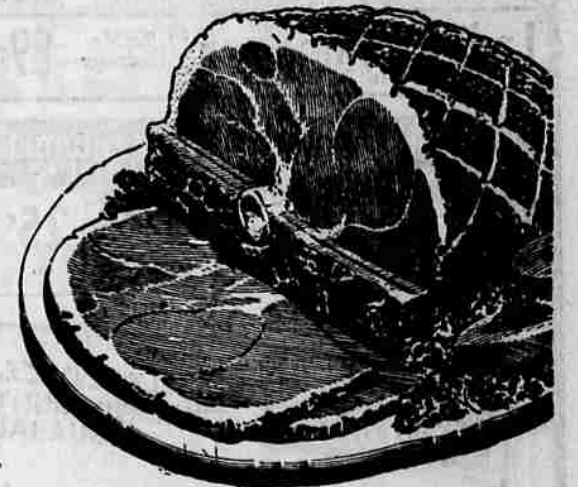
SOFT DRINKS
 Cragmont 12 flavors
2 Qts. 29^c Plus deposit

SMOKED HAM!

Fancy, Quality, Sugar-Cured beauties - for any size family

SAFEWAY has the FINEST MEATS IN TOWN

Whole or Half	Shank Roast	Butt Roast	Center Roast	Center Slices
59^c lb.	49^c lb.	57^c lb.	89^c lb.	89^c lb.



AMERICA'S FINEST BEER
GLUEK'S
 EASTERN
6 12-oz. Cans **98^c**

SOAP SAVINGS
 Parade Detergent
 11-oz. pkg. **29^c** 40-oz. pkg. **59^c**

Fresh Coffees
Edward's Instant
 2-oz. JAR 61c
 4-oz. JAR \$1.21
 6-oz. JAR \$1.82

- Dairy Foods**
- Cottage Cheese Blossom Time, Pint 29c
 - Whipping Cream, Crater Lake, Medo-Land 1/2-pt. 35c
 - Whipping Cream, Crater Lake, Medo-Land Pint 61c
 - Shady Lane Butter, Pound 59c
 - Van Zee Cheese Food 2 lbs. 59c

Poultry Specials
Stewing Hens 35^c lb.
 Fresh or Fresh Frozen. Pan-Ready
HEN Turkeys 45^c lb.
 Oven-Ready - 13- to 15-lb. Average

Pork Spare Ribs Polish Sausage

- 3- to 5-lb. Sides Real Meaty **49^c lb.**
- 12-oz. Rings **3 rings \$1**

"U.S. Choice" Grade Steer Beef!

- Boiling Beef Cut from "U.S. Choice" Plate lb. 19c
- Rib Roast "U.S. Choice" - Well trimmed lb. 79c
- Boneless Round Steak "U.S. Choice" lb. 95c
- Top Sirloin Steak "U.S. Choice" boneless lb. 1.19
- Tenderloin Steak "U.S. Choice" boneless lb. 1.59

- Ground Beef 100% lean beef lb. **39^c**
- Halibut Steaks Fresh, thick steaks lb. **55^c**
- Breaded Shrimp Breaded fantails 10-oz. pkg. **59^c**

- | | | | | |
|--|---|--|---|--|
| Deviled Ham
Underwood 1 1/4-oz. Can 22c | Prem Lunch Meat
Packed by Swift & Co. 12-oz. Can 45c | Clam Chowder
Snow's Best 15-oz. Can 27c | Snowdrift
Vegetable Shortening 3-lb. Can 79c | Torpedo
Chunk style Tuna - No. 1/4 Cans 29c |
|--|---|--|---|--|

