

### Former POW To Face Court

SAN ANTONIO, Tex. (AP) — Cpl. Claude Batchelor, 23, former POW who first chose to stay with the Communists but changed his mind, will face a general court-martial.

But Lt. Gen. I. D. White, 4th Army commander, said yesterday the court-martial, which is being held at the Klamath Falls, Ore., is not at stake because he was directing that the trial be held on a noncapital basis.

The Army held Batchelor in custody while his case was investigated.

Charges against him include conferring with the enemy concerning a subversive organization to be established in the United States after the Korean armistice, making speeches and writing articles to persuade fellow prisoners to believe Red propaganda, and writing letters to promote disloyalty.

The 4th Army said the trial, to be open to press and public, is expected to start sometime in August.

### TV Commentator Commits Suicide

NEW YORK (AP) — CBS TV commentator Don Hollenbeck was found dead of gas in his mid-town hotel apartment Tuesday and police said it apparently was a case of suicide.

Police said there were five open gas jets in the apartment.

He won the Polk Memorial Award from Long Island University in 1950 for distinguished reporting on his weekly "CBS Views the Press" broadcasts.

Hollenbeck was a war correspondent during World War II.

### Young Fishermen Discover Wreck

OAKRIDGE, Ore. (AP) — Three boys fishing in Salt Creek Monday discovered the body of Bobby Curtis Bourland, 23, in his wrecked car.

The car, which had shot off the highway and crashed under a bridge Sunday evening, was not visible from the highway.

Bourland, son of Mrs. G. G. Harris, Oakridge, had been discharged from the Navy only a few days before the accident.



**From Calf Feed on Up It's KERR'S**

Stock Cubes . . . Feeds of All Types  
Made Up On Your Custom Order  
**KERR-GIFFORD CO., INC.**

Formerly Tulelake Grain Co. Merrill, Phone 4451-4461

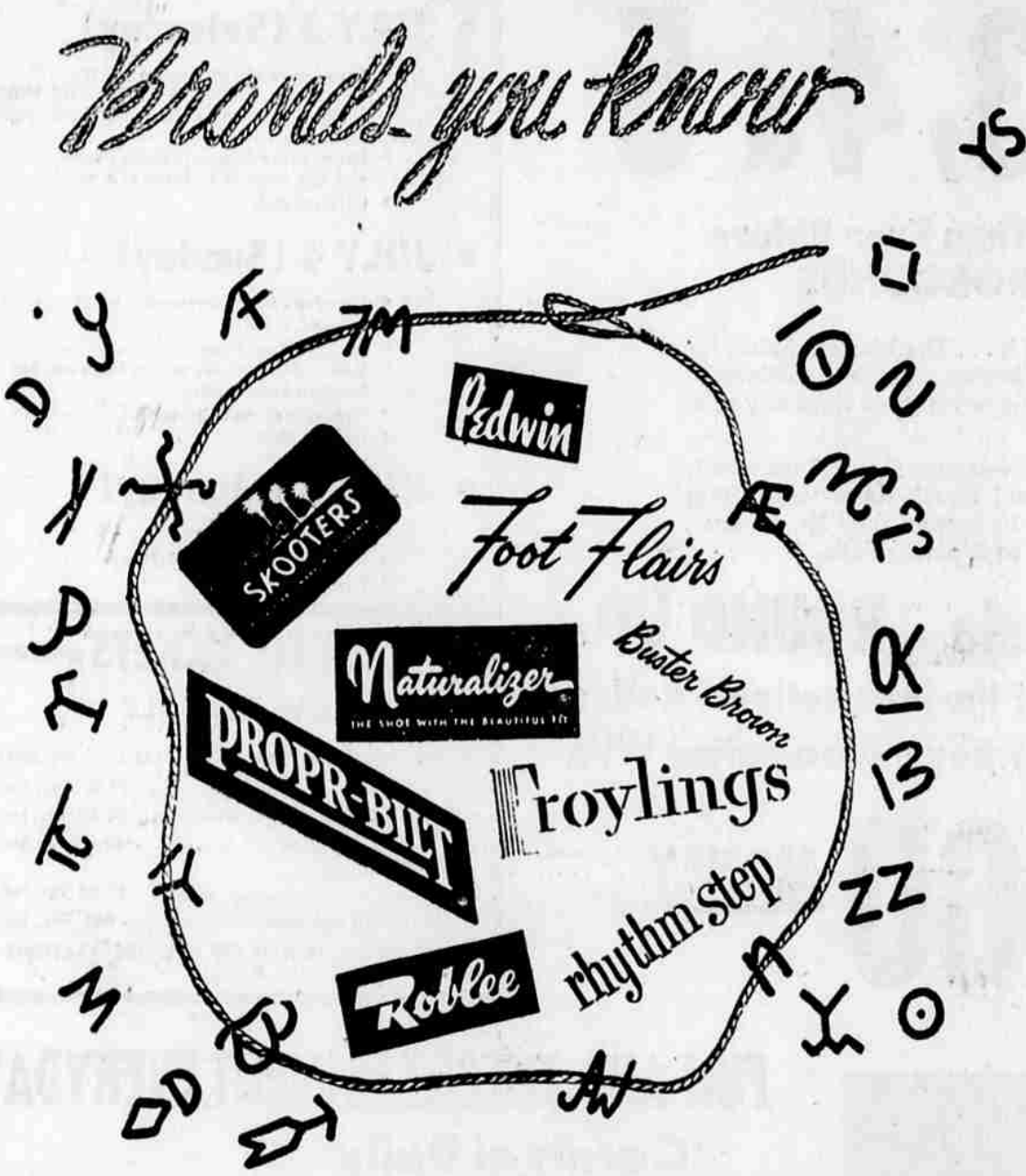
Manufacturers of Kerr's Feeds for Poultry and Livestock

9th and Pine *Montgomery Ward* Phone 3188

## WESTERN WEAR VALUES

# ROUND-UP TIME AT WARDS

*Brands you know*



SKOOTERS  
Foot Flairs  
Naturalizer  
Buster Brown  
PROPR-BILT  
roylings  
rhythm step  
Roblee

ARBUCKLE'S  
**The MODEL SHOE STORE**  
717 MAIN

IT'S **RODEO** TIME!

AND TIME TO  
*Get Your ROPE IN ON THIS*

1954 **FORD**



Famous brand for over 50 years!  
Backed by 31 years of local service!

**BALSIGER MOTOR CO.**  
MAIN AT ESPLANADE—PH. 3121



**BOYS' SADDLE PANTS**  
White-back denim 2.79 Sanforized

Ⓐ The Pants that boys all over are demanding. Authentic westerns with tapered legs, low waist, snug seat, orange stitching. 11-oz. denim. 6-14 \$1.60

Ⓑ Rayon-gabardine Shirt. Solid colors. 6-18. 1.98



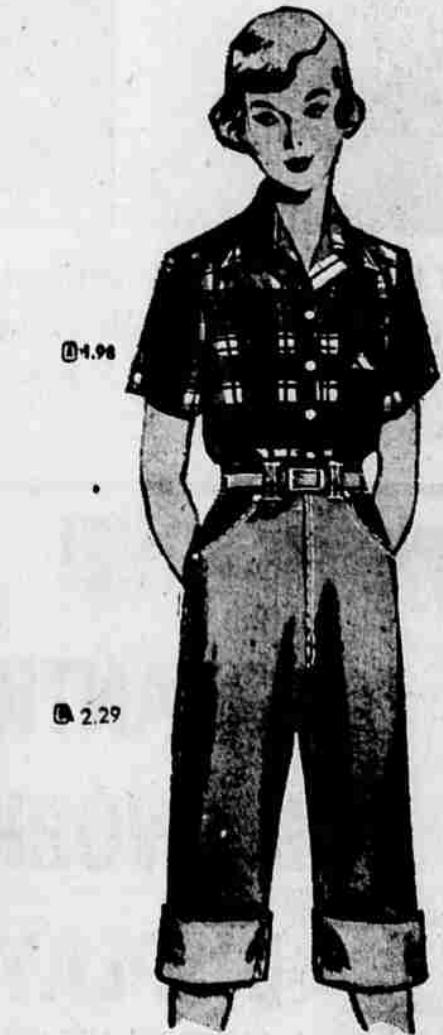
**STYLED IN THE WEST**  
2.79

Saddle pants of extra-tough 11-oz. white back blue denim. Popular Western construction with snug-fitting seat and leg. Non-chafing flat pressed outseams, double-seam inseams for greater strength. Bar-tacked strain points. Zipper front. Sanforized. In men's sizes 30 to 36.



**WESTERN FOR JRS.**  
1.98

A young boy likes to dress the same as his television and movie heroes. This Western-style shirt is sure to please him. Made of Sanforized cotton poplin in handsome, contrasting colors. Printed wild-flower designs on chest. He'll wear this shirt everywhere. Sizes 4-12.



**IDEAL FOR WORK OR PLAY**

Shirt 1.98 Jeans 2.29

Ⓐ Field Shirt in woven, Sanforized gingham. 24" long. Rounded shirt-tail. Vat-dyed colors. 32 to 38.

Ⓑ Sanforized Blue Jeans. Sturdy and practical. Bar-tacked at points of strain. Sizes from 22 to 36.



**WARDS "101" BRAND BOOTS**  
15.97

Men's rugged boots styled by one of America's foremost boot-makers. Sturdily made with leg and vamp of soft Palomina-tan leather; cushioned insoles for added walking comfort; oak-band leather soles for longer wear. 6-11; SIMILAR style for children. Sizes 4 to 3 . . . 5.98



**FINE WESTERN SHIRTS**  
4.98 Ea. Sizes 24-32

Hand washable

Handsome styled gambler model for good looks and form-fitting comfort. Tailored of crease-resistant rayon gabardine or Sanforized cotton broadcloth. Arizona wing pockets, pearl-type snaps. Rich colors.