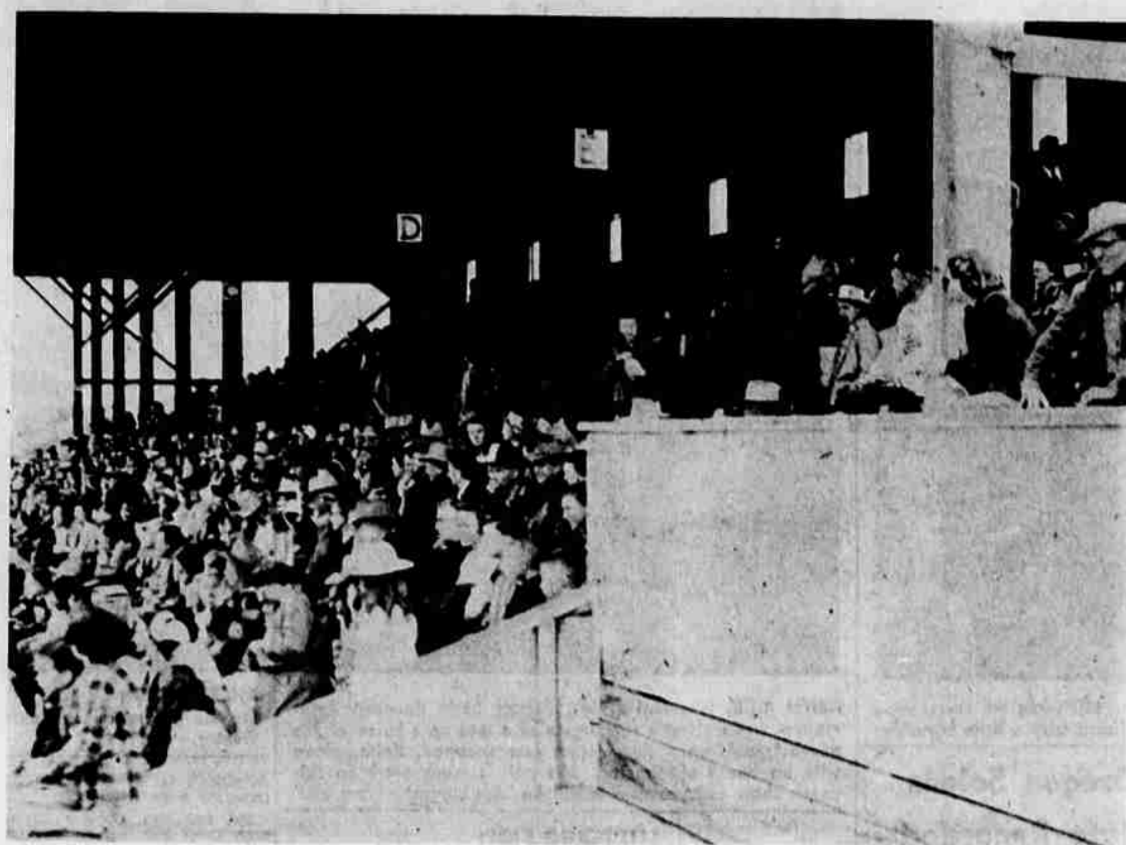




ROUNDUP ASSOCIATION director Charlie Read had a warm coat on when he acted as handy man at the queen tryouts June 13 at the fairgrounds. Charlie, from Read's Saddle Shop, has long been active in rodeo work in the Basin.



AN ENTHUSIASTIC CROWD of rodeo fans turned out for the queen tryouts at the fairgrounds on June 13 despite a cold and blustery day that saw the girls competing on a wet infield and a muddy track.



A CHAMPION CHESTNUT, with Ed Williams up, was also on hand for the tryouts. This is the horse that has drawn down so many blue ribbons in various shows.



ROSS DOLLARHIDE, a local boy from Lakeview, is one of the top notch bronc stompers slated for action in the arena here on July 3-4-5. He's shown here topping off Dirty Dan. — Photo by Helfrich



FAST ACTION was a part of the queen tryouts, as is shown here by Marcia Wilson bringing her horse across the arena.



A YOUNGSTER IN YEARS but a top hand when it comes to riding those broncs barback is Bud Speelman, 1948 barback champ. He'll be listed among those showing up for this year's Klamath Basin Roundup here July 3-4-5.

The great Rift Valley, an unexplained rash in the earth's surface, extends from Lake Victoria in Uganda, through Ethiopia to the Dead Sea and can be traced still farther north.

The pigments which determine the color of the human eye often appear some time after birth so that children who will be dark-eyed later, often are blue-eyed at birth.

The people of the United States had 26 per cent of the income of the world in 1938 and 47 per cent in 1948 says the Twentieth Century Fund.

Use of fingerprints for identification was widely used in the ancient world, but a scientific development of the modern system did not start until 1823.

Accidental drownings kill about 4,500 people a year in the United States.

There are nearly four tons of steel in a modern, furnished six-room house.

There is about one pound of salt in every four gallons of sea water.

Because the resistance of nickel to electrical currents increases as it gets warmer, it often is used to control the temperature of electric blankets.

Accidental drownings kill about 4,500 people a year in the United States.

There are nearly four tons of steel in a modern, furnished six-room house.

There is about one pound of salt in every four gallons of sea water.

Because the resistance of nickel to electrical currents increases as it gets warmer, it often is used to control the temperature of electric blankets.

Accidental drownings kill about 4,500 people a year in the United States.

Q U X B G J D H A N Z X Y I H W 2, @ X U FO ZL 92D @ U OZ NO

RICKYS
HOME OF FAMOUS BRANDS

RIDIN' HERD ON AMERICA'S BEST BRANDS

AND WE'RE ALL HEADING FOR AMERICA'S BEST RODEO - THE KLAMATH BASIN ROUNDUP

↑ N NU 7 I G H O4 ♡ K K7 ≈ @ ① ·P W/ ≡ △ 50 21 ↑ Y 66 Z 4 D