

STOCKS

WALL STREET
NEW YORK (AP)—Prices drifted in a quiet market Friday with a steady tone presented in the late afternoon.

POTATOES

CHICAGO (AP)—Potatoes: Arrivals 43 on track 226; total U.S. shipments 599; market strong on reds; firm to slightly stronger on long whites; Idaho Russets \$4.65; Minnesota North Dakota Pontiacs \$4.00-10; Wisconsin round whites (50 lb sacks) \$1.25-50; Alabama Pontiacs \$4.10; Triumphs 3.65-4.10; California long whites \$4.50.

SAN FRANCISCO (AP)—(USDA)—Potatoes: 4 cars on track, Calif. 2 arrived; market barely steady, no sales.

LOS ANGELES (AP)—(USDA)—Potatoes: 11 cars on track, Calif. 1 Idaho 1 arrived; market unsettled, Idaho Russets utility grade 2.75.

Livestock

PORTLAND LIVESTOCK

PORTLAND (AP)—(USDA)—Cattle good-choice fed steers fully \$9 higher; other steers and heifers closed weak-50 lower; cows \$0-1.00 off late; choice 1,071 lb fed steers 25.50 Monday, other choice 850-1,150 lb 24.00-25.00; good 22.50-23.75; commercial 19.50-21.50; cutter-utility 13.00-19.00; good-choice feeders 18.00-21.00; good-choice heifers 20.00-23.00; one choice heifer 23.50; utility-commercial 12.50-19.00; canner-cutter cows 9.50-11.00 late, few to 11.50 and up to 12.00 freely and 12.50 sparingly early; utility cows 12.00-14.50, early to 15.00; commercial 15.00-50, young cows to 16.20 and over; utility-commercial bulls 15.50-18.00 with cutters down to 13.00.

Calves salable for week 320; market fairly active, mostly steady; good-choice vealers 20.00-24.00, few to 25.00; choice 37 1/2 lb calves 22.00; utility-commercial calves-vealers 12.00-18.00; good-choice stock calves 18.00-21.00. Hogs salable for week 1.32 1/2; market closed 75-1.00 lower after recover 25 of early decline; choice 180-235 lb butchers 27.75-29.00, few to 32.50 Thursday and up to 29.75 Friday, both butchers and sows selling unevenly steady to 50 cents higher. Top roset to \$25.50, paid springling. Most choice 180 to 240 pound butchers sold at \$25.00 to \$26.00.

One load of choice to mostly prime steers reached \$23.25 while a few commercial and good kinds were taken at \$17.00 to \$21.50. Cows were steady at \$11.50 to \$13.75. A part deck of utility and good spring lambs sold for \$23.50.

CHICAGO LIVESTOCK

CHICAGO (AP)—Hogs scored their first advance of the week Friday, both butchers and sows selling unevenly steady to 50 cents higher. Top roset to \$25.50, paid springling. Most choice 180 to 240 pound butchers sold at \$25.00 to \$26.00.

CHICAGO GRAIN

CHICAGO (AP)—Firmness in wheat and July soybeans stood out prominently in an otherwise easier grain market on the board of trade Friday. Dealings were more active than in other sessions this week.

WHEAT

Open High Low Close
July 1.92 1/4 1.94 1.92 1/4 1.93
Sep 1.95 1/4 1.97 1/4 1.95 1/4 1.96 1/4
Dec 2.01 2.02 2.01 2.01 1/4
Mar 2.04 2.04 1/4 2.03 1/4 2.03 1/4

PORTLAND GRAIN

PORTLAND (AP)—Coarse grains unquoted. Wheat (bid), to arrive market, basis No. 1 bulk, delivered coast: Soft white 2.30 1/2; soft white (excluding Rex) 2.30 1/2; white club 2.30 1/2.

Weather

Western Oregon — Cloudy with a few showers Friday night and early Saturday, becoming partly sunny Saturday afternoon. Warmer through Friday night. A little cooler Saturday with highs 62-72 except about 55 along coast. Lows Friday night generally 42-48. Lows Friday night will become southwesterly Friday night and northwesterly Saturday.

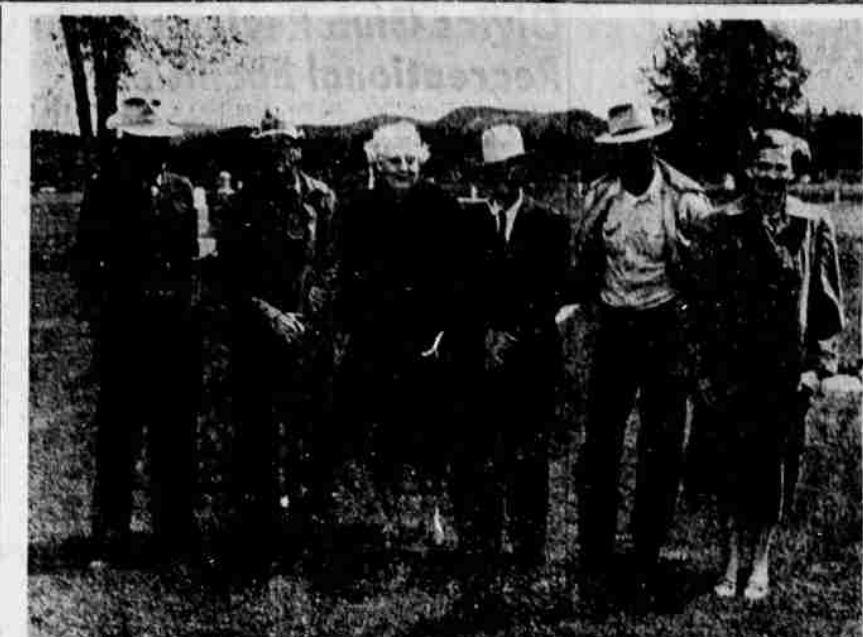
Eastern Oregon Increasing high cloudiness through Friday night. Partly cloudy and warmer Saturday with widely scattered showers in the mountains. Highs 63-75. Lows Friday night 35-45.

Grants Pass and vicinity — Partly cloudy through Saturday; chance for a few light showers Friday night. Low Friday night 45; high Saturday 70.

Northern California — Fair through the week end but coastal fog and partly cloudy in extreme north Friday night and Saturday. Northwesterly winds, 10-20 m.p.h. near coast.

BY THE ASSOCIATED PRESS

Table with 2 columns: City, Max. Min. Temp. Includes Baker, Bend, Klamath Falls, Lakeview, Medford, North Bend, Ontario, Pendleton, Portland (Airport), Roseburg, Salem, Boise, Chicago, Denver, Eureka, Los Angeles, Red Bluff, San Francisco, Seattle.



BARBECUED BEEF — courtesy Bill Campbell — plus baked potatoes, brown beans, cabbage salad, rolls, homemade pies, gallons and gallons of coffee are on the food agenda for Sunday at Lost River Cemetery in Bonanza. Proceeds will go for maintenance and development of the cemetery. Key people for this 4th annual Memorial Day dinner are (left to right) Mrs. Luther Noble, chairman; Lloyd Gift, president of the cemetery association; Bill Campbell, donor of the beef for the barbecue; Mrs. M. E. Pepple, cemetery association secretary-treasurer; Carrell Weatherly, director; Jay Walker, cemetery caretaker. Not pictured is Leonard Ritter, another cemetery director. Development at the cemetery to date has been made possible solely by donations. The association was formed in 1949.

Check Artist Bail Set

Frank M. Mitchell, 32-year-old Tulsa, Oklahoma carpenter, waived preliminary hearing late Thursday when arraigned before District Judge D. E. Van Vactor on a charge of obtaining money and property under false pretenses.

Weyerhaeuser Worked Killed

Joseph Henry Dirschl, 53, 3356 Shasta Way, died Thursday night in Klamath Valley Hospital, from injuries suffered in an accident in the hardwood plant of the Weyerhaeuser Timber Company.

Life Guard Club Holds Meeting

MALIN — The Malin life guard club met Tuesday evening, May 25, to elect officers and plan the work for the summer swim program.

R. J. Gustin Death Told

Robert Thornton Gustin, 47, resident of Klamath Falls for the past 20 years, died Thursday, May 27, at Hillside Hospital following an illness of six weeks.

Man Bound Over To Lane Deputy

A deputy from the Lane County Sheriff's office was expected here today to pick up Robert Clayton Harrington, who was arrested by Oregon State Police, Thursday night.

Logging Trucks Permission Told

Logging trucks will be permitted on state highways Saturday and Monday of this weekend, according to Sergeant Tichenor, Oregon State Police.

Logging Trucks Permission Told

After June 1 no log hauling will be permitted Saturday afternoons or Sundays, he stated.

Cars Damaged On South Sixth

Three cars were badly damaged, one operator cited for failure to stop at a stop sign, but no one was injured in a car crash on South Sixth and Homedale Road shortly before 3 p.m. Thursday.

Ladies Aid Hold Social Meeting

The Main Community Presbyterian Church Ladies Aid Society held its May social meeting Thursday, May 20, in the church parlors. The group sang hymns and were led in prayer by Mrs. George Fabianek, president.

OBITUARY

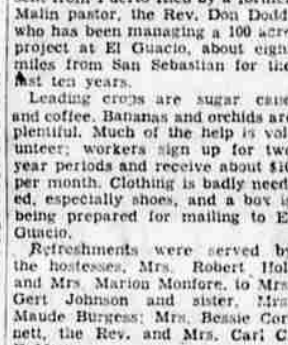
Robert Thornton Gustin, 47, a native of Old Town, Maine, and a resident of Klamath Falls for the past 20 years died here May 27. He was a member of the Eagles, Pelican Post No. 1333 VFW.

FUNERAL NOTICE

Funeral services for Samuel L. Weeks, 24, who died near Fortuna, California, on May 17, will take place at the graveside in Klamath Memorial Park on Saturday May 29, at 10 a.m.

Armco Irrigation Gates

Armco irrigation gates are durable, quick to install and easy to operate. Gates are held firmly in place by the soil packing into the corrugations of the metal pipe. If desired, gates may be removed and re-installed.



HEATON Steel & Supply

428 Spring Phone 2-3427
Special Purchase
ALLOWS
Tremendous Bargains!
THE BIGGEST TRUCK AND TRAILER STOCK IN CALIFORNIA AT Wm. Sutton TRUCK SALES

FARM TRUCKS

50 2-ton units with flat beds, heat bodies, cab and chassis. Priced from \$275.00 to \$1,295.00.

CONSTRUCTION

1 28-ft. front-haul furniture van semi 5 Van bodies from 12 to 14 ft.

MOVING AND DRAYAGE

4 Mixer trucks — 3 1/2 yds. 6 Dump trucks — 4-10 yds. 1 Lumber carrier 1 Cat 12 grader

GENERAL USE

25 1/2-ton pickups, 1947-1952 models 5 1/2-ton panels 3 Route vans

All at low, low prices!

We carry our own paper and can work out the type of Financing Plan to suit you • Special Farmers Plan • Winter Closures when needed • Rental Purchase Plan • Can even work out no down payment with proper security

Phone GI 3 5951 or GI 2 8334 Night phone for appointment HI 5 9037

OPEN SATURDAYS and SUNDAYS Wm. Sutton TRUCK SALES 1300 BROADWAY SACRAMENTO

Grain Storage Subsidy Told

WASHINGTON (AP)—The Agriculture Department has reopened a program under which it will pay subsidies, if necessary, to encourage private construction of more commercial storage facilities to handle the nation's mounting grain surplus.

Bennington Named For Old Battle

QUONSET POINT, R.I. (AP)—This week's explosions and fire aboard the aircraft carrier Bennington took more than six times the number of American lives lost in the Revolutionary War battle for which the ship was named.

The Following Klamath Falls Lumber Dealers will be CLOSED Memorial Day - Monday - May 31st in order to give our employes the benefit of the double holiday. Includes Copeland Yards, Long Bell, Drake Lumber Co., Klamath Valley Lumber, McCollum Lumber Co., Home Lumber Co., Swan Lake Moulding, Basin Building Materials.

There's only one SKIPPY TOPS IN QUALITY! BEWARE OF IMITATIONS LOOK FOR THE HAPPY LITTLE DOG LOW IN PRICE

SAVE! BALER TWINE \$10.45 bale off the truck. Truck will be at store all day Wednesday, June 2. Guaranteed Twine — Certified for Uniformity, Strength and Weight. KLAMATH TRACTOR & IMPLEMENT CO. 5616 So. 6th Ph. 8801