

Founder Of Hays Office Dies At 74

SULLIVAN, Ind. (AP)—Will H. Hays, 74, who led a predepression cleanup of movie morals after uniting the Republican party behind President Harding, will be buried in his beloved home town Wednesday.

The man who served 24 years as a "censor" of the motion picture industry died in the quiet of his home here yesterday.

Once a Republican national chairman before he was 40, he kept an interest in politics till death, though a heart ailment had made him an invalid since October. Only in the last week did his condition become critical.

His wife Jessie and his only son, by a former marriage, Will H. Hays Jr. of Crawfordsville, Ind., were at his deathbed.

Through his years as a public figure in politics and the movie industry, he kept his home and law office in Sullivan and voted here.

He had been in good health until a pneumonia attack a year ago, then returned from his New York home last fall because of his heart ailment.

His genius in reorganizing the Republican party in Indiana sent him up to the national chairman's job to reunite the party, still bearing the wounds of the Bull Moose split.

His success brought a landslide victory for Harding in 1920, and Harding named him postmaster general.

Hays left the Cabinet job in 1922 to clean up the Hollywood film industry, then under a cloud of movie colony scandals. He served 24 years as the \$150,000-a-year president of the Motion Picture Producers & Distributors of America.

Though he retired from the Hollywood job to his law practice in 1945, the "Hays office" code of good taste in movies remained entrenched until recently, when signs of rebellion began to appear.

New Elevator Plans Told

TULELAKE — Construction will start Monday on steel-reinforced concrete elevators on the Great Northern Railway right-of-way, that will replace the laminated frame structure owned by the Winema Elevators, destroyed by a million dollar fire last September.

Bids totaling \$350,000, were let Thursday, to the Woodland Mill Supply Company, Woodland, California.

The new structure containing 26 bins will have a capacity of 320,000 bushels, greater than the one destroyed, and will bring the total storage capacity of Winema Elevators in the basin to an approximate million bushels.

The installation will include equipment for processing barley for immediate use by malting companies. This will be the first operation of the kind in the basin.

Unloading machinery will speed up truck unloading to a maximum of 1 1/2 minutes and plans call for two unloading pits and weighing stations.

The elevators will incorporate other late ideas in grain storage and the owners will be prepared to clean other small seeds and grains. The company will buy, sell and store.

Engineering on the locally owned plant was completed by O. D. Clark and Jerome A. McDevitt, consulting engineers, Portland.

A new type of construction, slip forms, will be used and concrete will be poured continuously day and night until all cylinders are completed, according to Ivan Kandra, co-owner and general manager of Winema Elevators. The process will eliminate the "bogey" of dry joints.

The structure will be built upon piles, driven 80 to 100 feet into the earth for the original structure. Completion is scheduled for August.

Owners of Winema Elevators, independent of Winema Farms, are Ivan Kandra, Stephen Takacs, Lee Dixon, all of Tulelake and Bernice Taylor, Los Angeles.

Winema Elevators has storage also at Malone, Tulelake, on the west side of Tulelake, at Merrill and Alturas.

God Is Three

Geo. N. Taylor

First, as God the Father he wills whatever is to his glory. Then, as Christ, the Son, he brings it to pass. Third, as God the Holy Spirit, he bears down until you know you are a sinner and lost. And Christ told His saved ones to go into all the world and tell all men that He had died for their sins to set them right with God. As they believe, God gives them eternal life. After Christ's death for our sins, He ascended to glory. Satan could not hold Him in the grave. Having him as your own Lord and Saviour, Christ is to also raise you. And may you become a believer and have that glorious resurrection, says the family that sponsors this space. ADV.



NEW OFFICE MANAGER at the Chamber of Commerce is Mrs. J. F. (Mary) Rodgers, ready with the same smile that greeted City Hall visitors the last two and a half years. Mrs. Rodgers lives at 3609 Alva.

Farm Expert Warns About Root Weevil

The warm weather the past two weeks has brought out the clover root weevil, according to E. A. Dickason, Oregon State College entomologist, who completed a survey of clover fields in the Klamath country the past few days.

Dickason has been working with the local county agent's office in studying the effect of several control measures for the weevil.

Dickason states that the weevil is present in large numbers and are mating extensively. This means that the insect will be laying eggs before long if good weather continues. If control measures are to be effective in controlling the larvae that feed on the clover roots, it will be necessary to apply insecticides to kill the adult weevils when the sun warms the ground enough to cause the adult weevil to be-

come active.

The insecticide recommended for control of the weevil is DDT at the rate of one pound of actual DDT per acre. This can be done by dusting the field with 20 pounds of five per cent dust or by spraying with wettable materials using about 20 gallons of spray per acre containing one pound of DDT. Aldrin or Heptachlor may also be used. These materials should be sprayed at the rate of four ounces of actual killing agent per acre, according to Dickason.

The insecticide should be applied during the warmest part of the day at this time of year. Later in the

season when bees are active, spraying should be avoided during the warm part of the day because of injury to these useful insects.

All second year stands of clover should be sprayed or dusted. At this time there does not appear to be many weevils on last fall seedlings but they will spread rapidly to these areas from old fields, especially after these fields have been plowed. Spraying before the fields are plowed will prevent this spread.

The new seedlings should be examined for presence of the weevil to determine the need for insecticides. Unless the spray machine is equipped with an agitator, Dick-

ason recommends that the emulsion form of the insecticide should be used. Wettable forms are satisfactory when used with an agitator.

son recommends that the emulsion form of the insecticide should be used. Wettable forms are satisfactory when used with an agitator.

son recommends that the emulsion form of the insecticide should be used. Wettable forms are satisfactory when used with an agitator.

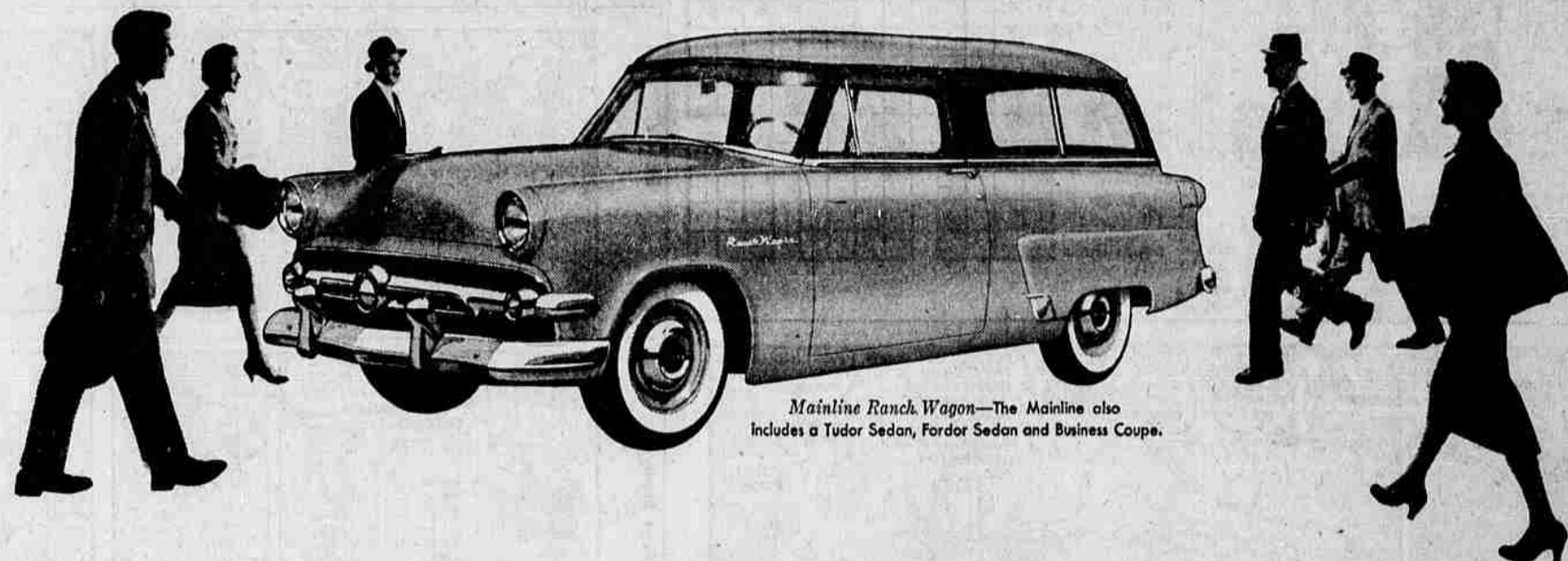


Flowering Shrubs . . . Evergreens
HEDGES . . . The proper kind
Malin Nursery Phone 5502 - Klamath Falls
Homedale at Heron Drive

INCOME TAX RETURNS
Expertly Prepared By:
N. J. ROSENBAUM
Commerce Bldg.
1111 Walnut St.
Phone 5903 or 5863

NOW AT DERBY'S
RADIO & TV
★ Service ★
MR. JOE FISHER
our full time service man on . . .
• RADIOS
• PHONOGRAPHS
• TELEVISION
Derby's
MUSIC CO.
126 No. 7th Ph. 4519
Eve. Ph. 7181 - 7241

TUNE IN
The RED SKELTON SHOW
A RADIO LAUGH FEST
STARTS MARCH 15th
OVER
KFJD



Mainline Ranch Wagon—The Mainline also includes a Tudor Sedan, Fordor Sedan and Business Coupe.

The big choice for '54!

With 28 new models . . . 2 new deep-block engines . . .
all the optional power assists* of costliest cars . . .

the 1954 Ford is fast becoming America's favorite.



Crestline Skyliner—The Crestline also features the Sunliner, Victoria, Fordor Sedan and Country Squire.

It's wide choice that helps make Ford the big choice for 1954!

Whichever of Ford's 14 body styles you choose, you get the crisp clean lines of the recognized style-leader. And whichever of Ford's new engines you choose—the brilliant 130-h.p. Y-block V-8 or the flashing 115-h.p. I-block Six—you get thrilling "GO" with satisfying economy. What's more, with new Ball-Joint Suspension—exclusive to Ford in its field—you enjoy handling and riding ease that's literally a new experience. And with a choice of all the worthwhile power assists . . . power steering, power brakes, power windows all around, 4-way power seat and versatile Fordomatic Drive . . . you can have your Ford as automatic as you want it. Why not make Ford your choice, too? Whatever your taste and requirements, there's a Ford that's exactly your kind of car.

*at extra cost



Customline Fordor Sedan—The Customline also offers a Tudor Sedan, Club Coupe, Ranch Wagon and Country Sedan.

We cordially invite you to Test Drive **Ford** . . . America's "Worth More" Car

BALSIGER MOTOR CO.

Main at Esplanade

Phone