

# Herald and News

KLAMATH FALLS, OREGON, WEDNESDAY, JANUARY 26, 1964  
Price Five Cents—16 Pages Telephone 8111 No. 3744

## The Day's News

BY FRANK JENKINS  
 its new hardboard plant, inaugurates today the new era of lumbering in the Klamath region — the era of PROCESSING — as distinguished from merely cutting down and sawing them up into a revolutionary development.

the advent of this new two things will happen: The lumber industry will no longer cut out and move on. Its material supply will become permanent.

Every tree cut on our sustained yield timber lands will produce MORE MAN HOURS OF EMPLOYMENT.

uses are practically limitless. Here are a few of them: television cabinets, auto parts, playing for floors, mirror furniture panels, drawer slides, sliding cabinet doors, core materials for doors and metals and other items, die-cut boards, template items, tiling, millwork items, novelties, containers, window covers, home radiator covers, car seats, card table tops, handboards, waste-baskets, panels.

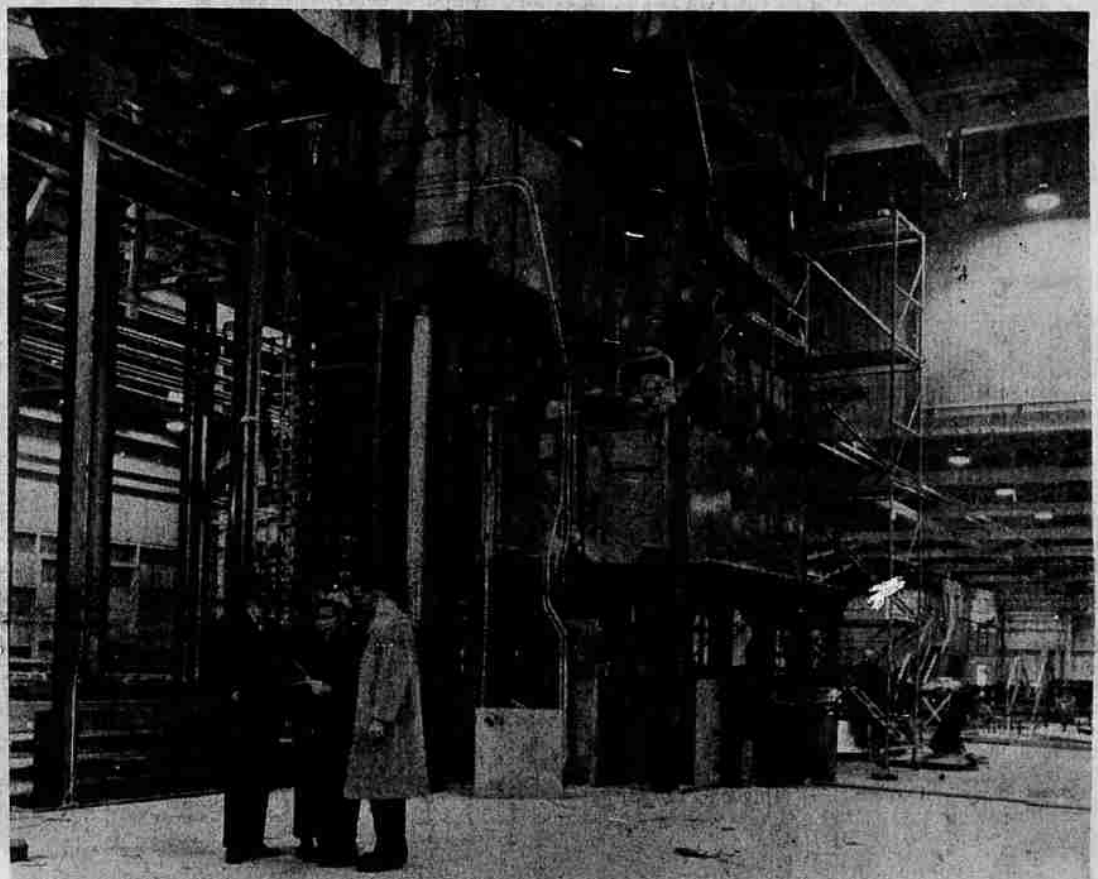
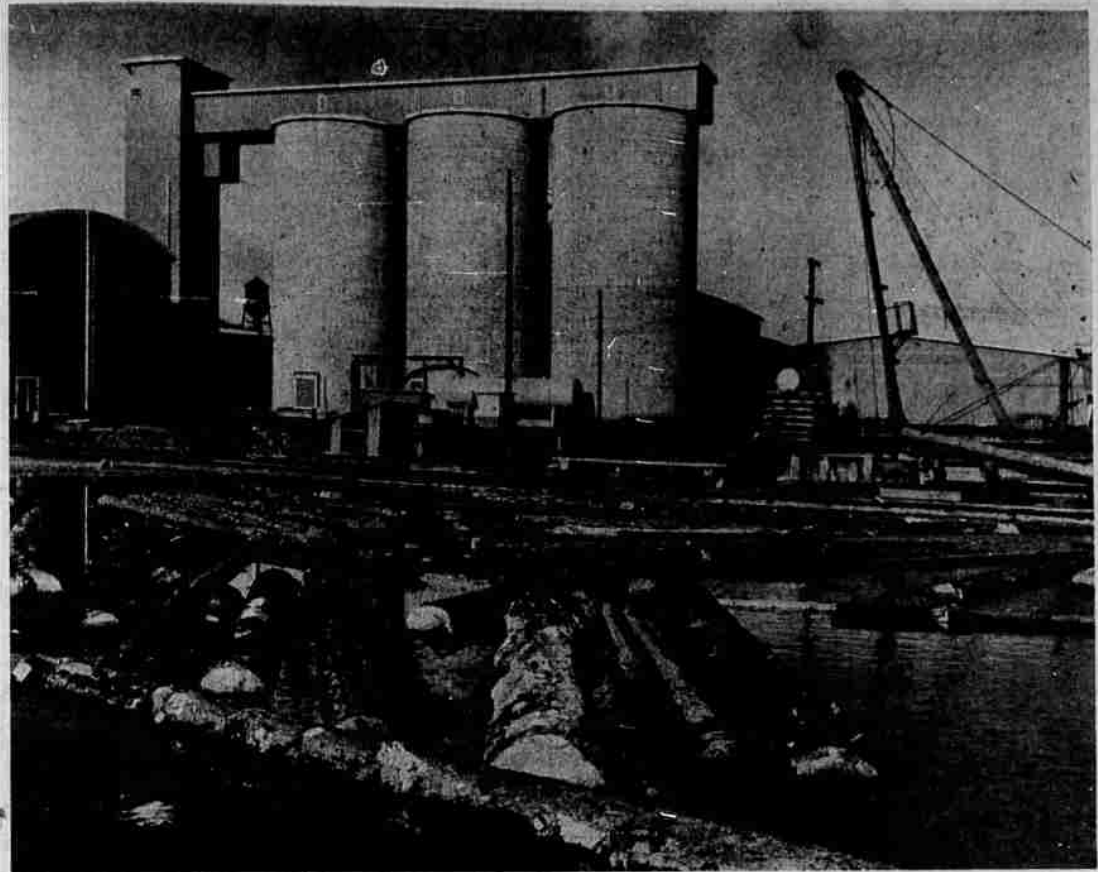
It suggests another vision. This versatile material is available RIGHT HERE. If we have imagination enough and energy and determination enough, we can interest in establishing here a new way of manufacturing the wide range of consumer goods that can be made from this new material.

can do the same with this wonder material IF WE HAVE THE IMAGINATION, THE ENERGY AND THE DETERMINATION TO GO ABOUT IT EFFICIENTLY.

Armond To Seek Office  
 HARVEY H. DEARMOND (D) — Harvey H. DeArmond, 60, Wednesday announced candidacy for the Republican nomination for state representative in Deschutes County.

Idaho Spuds Alongside Slots  
 DETROIT (AP)—Detroit police are wrestling with a weighty problem. A thousand pounds of choice Idaho potatoes tumbled off the rear of a truck. A motorist was unable to catch the fast-moving truck driver, so he called police.

Armond To Seek Office  
 HARVEY H. DEARMOND (D) — Harvey H. DeArmond, 60, Wednesday announced candidacy for the Republican nomination for state representative in Deschutes County.



WOOD CHIPS from which hardboard is made are stored in these three big silos, a part of the new hardboard installation at Weyerhaeuser. These storage bins are 70 feet high and 35 feet in diameter. The center picture shows the huge press in the new plant. This rig weighs a total of 661,925 pounds and presented a major problem when it came to installation. Shown here looking over the plans are Hugh Campbell, George Britt, Dale Alter and John Robinson. Plenty of building space is necessary for the new plant. Here John Robinson, hardboard plant superintendent, and Hugh Campbell, Weyerhaeuser manager, look over the new area.

## Weyerhaeuser's Hardboard Plant Big Step Ahead

Weyerhaeuser's new multi-million-dollar hardboard plant, which has been under construction at the site of the company's operations on the Klamath river for the past two years, goes into commercial operation today — although, John G. Robinson, superintendent of the new hardboard unit, explains, it will be undergoing "shakedown" operations for at least the balance of this month.

It will create about 125 new jobs at the Weyerhaeuser Klamath Falls branch, Robinson says. This figure, he adds, includes new jobs created in the woods through the harvesting of white fir timber, which is the principal source of raw material for the hardboard plant.

It inaugurates in the Klamath country the new era in lumbering forecast by Hillman Lueddemann, of Portland, a few years ago when he told a gathering of lumbermen in San Francisco that in a far shorter period than anyone realizes there will no longer be any saws in sawmills.

It is the biggest industrial development in the Klamath country since the original Weyerhaeuser plant, which was started in 1928 and went into production with its first unit in 1930. The sawmill and planing mill constituted the first unit, which was followed about a year later by the box factory. A plant for the making of pre-tensioned logs was added in the late '30's.

When in full production, the plant will produce about 90,000,000 square feet of hardboard annually, and will utilize about 21,000,000 board feet of white fir a year, Robinson says. To obtain this footage of white fir, the company will step up its relogging operations.

White fir will soon account for more than one-sixth of the company's annual tree harvest on the Klamath tree farm. Before construction of the hardboard plant, white fir accounted for only one-fifteenth of the annual cut on the tree farm.

Working with Roberts are the following development center personnel: Jack Sheridan, chief of process engineering; Norman Briggs and George Matter, process engineers; and Glen Naslund, chief of evaluation and testing group.

Naslund is assisting in setting up a laboratory and testing equipment in the new plant.

The development center personnel now assisting in the first operational stages of the Klamath plant worked on the experimental processing of the new hardboard in the pilot plant at Longview. More than 25,000 loads of hardboard were put through the press in this pilot plant. Most of this board was sold by the company's market-exploration men and special products department over a period of two or three years. Such sales of hardboard were made to prove the usability and adaptability of the new product.

When the company was assured that the hardboard would find a market, decision was made to construct the plant at Klamath Falls.

A Klamath Falls resident — Dale Alter — was in charge of the construction work on the new hardboard plant.

Alter, mechanical superintendent of the company's Klamath Falls branch and a Weyerhaeuser 20-year employe, supervised construction details from the time ground was first broken for the plant. He worked from plans prepared by the company's home office. The plant was engineered and designed by Weyerhaeuser's engineering department at Tacoma, with specifications furnished by the company's development center at Longview, Wash.

Building the 460-foot-long plant was a job of major proportions, according to Alter.

"When we started construction on the plant, almost two years ago," he says, "its site was land that had once been a farm area. Silt soil, covered with dredgings from our log pond, had to be removed and refilled to a depth of three or four feet. It was quite a job."

"We hauled in tons of earth that would compact, then covered it with about 2,500 tons of rock and gravel. Later a six-inch slab concrete floor was poured for the plant, which has a total floor area of more than 66,000 square feet."

Further indication of the size of the construction job is given by Frank C. Tarr, purchasing agent for Weyerhaeuser's Klamath Falls branch. More than 4,700 cubic yards of rock, 1,700 cubic yards of sand and 23,800 sacks of cement were used in building the plant, Tarr says.

The heaviest piece of equipment installed in the plant is the hardboard press, which weighs 661,925 pounds. Transporting and lifting the press, Tarr points out, presented a problem. Seven railway cars were required to haul it. A search had to be made along the entire Pacific Coast for a pair of 20-ton chain blocks that would handle the weight of press parts during installation.

To install the press, a special railway track reaching from railroad spur to plant floor was built. This special track, 1,000 feet long, used three rails laid on ties without ballasting. The track was named after another of the plant's builders, George Britt, head millwright. Most of the 75 men on the construction job called the track "Britt's Shortline and Southern," after its inventor.

"The hardboard press was so heavy," Britt says, "that we had to lift its pieces off the regular-size railroad cars on which they arrived in three-wheel dry-kiln trucks to transfer them through a hole in the plant wall to their position. The heaviest piece of the press weighed 37 tons."

## Shopping Center On Sixth Slated

A South Sixth Street development program that involves one of the most advantageous locations in that area, was announced Monday by Harry R. Waggoner, owner of the Suburban Drug and the Thrifty Variety, located at 3850 So. 6th.



HARRY WAGGONER

Both businesses have been operating for only a short time. Waggoner, with an option on the Altamont Auto Court and Trailer Camp, plans the building of an extensive shopping center, patterned after several others, adjacent to large cities on the West coast. The property, 7.7 acres has been owned for many years by the late Steven Sabo and Mrs. Coral Sabo.

The assumed name, Town and Country Shopping Center, has been filed in the Klamath County clerk's office.

The overall plan includes the establishment of one business of a kind in the center, operated independently in a huge paved parking area that will service approximately 1000 cars.

Construction is to be brick and concrete. Actual clearing of the grounds, including removal of trees and buildings, will get under way in early spring. The camp has not operated for the past year.

With the new addition to his already established business concerns, Waggoner will have a 1700-foot frontage on South 6th, also designated as Oregon State Highway 66. Frontage of the Altamont property is 526 feet. The land extends back to the OGE Railroad and will be adjacent to the proposed new state traffic freeway. Highway 60 is the main traffic artery to Lakeview from Klamath Falls and joins Highway 39 at the Merrill-Lakeview Junction. No. 39 leads to the big agricultural area to the south, to Reno and inland California cities.

Waggoner, in a statement announcing his plans said: "I feel that the support I have already had from the residents of the South Suburban area indicates the need for such a shopping area. Service and lower prices are our aims and the center will be developed to insure maximum success."

The land is part of the old Altamont Ranch and was purchased by the Sabo's from the late D. R. Campbell.

VISIT POOR IDEA  
 MADRID, Spain (AP)—A foreign ministry spokesman said Tuesday the planned visit May 10 of Britain's Queen Elizabeth to Gibraltar is "imprudent" and will arouse a national protest in Spain.



A CAMERAMAN was the subject of this morning's nine o'clock special. He's Bill Griffith, from Leo's Camera Shop.

## Mercury Falls Over Montana

HELENA, Mont. (AP)—Subzero temperatures numbed Montana early today as a fast-moving cold wave fanned southward over at least six other states.

The frigid cold mass from Canada, which already has gripped Montana for a week, spread over North and South Dakota, Wyoming, northeastern Colorado, western Nebraska and western Kansas. As the mercury dived, snow was falling west of the Continental Divide in Wyoming and at some points in the other states.

Early morning temperatures ranged down to 37 below zero at Cut Bank, Mont., and under zero at all 18 Montana stations making weather reports.

MANAGER  
 PORTLAND (AP)—Cecil C. Curl Tuesday was named manager of Secretary of State Earl T. Newberry's campaign for Republican nomination for governor.

Curl, a Umatilla County rancher, has served for many years as chairman of Umatilla County Republicans.

TOP SPORTSMAN, LAND OWNER NAMED  
 Lonnie Lewis, Route Three, and Dean Callas, Tulelake, have been named the "outstanding sportsman" and "outstanding land owner" of the year in the Klamath Sportsmen-sponsored contest.

Both men will receive awards presented by the sportsmen's club and by the Herald and News at the February meeting of the group.

Lewis won the nomination for the most sportsman-like act of the year following a letter from his wife to the committee. She said, in part: "On December 11 Lewis saw a deer out in the flooded area at Algoma. This area had a crust of ice and apparently the deer had been fighting it for some time. Returning home, Lewis loaded a small duck boat into his pickup, enlisted the aid of a state policeman, and went out in the area, where they herded the deer back to safety. When it reached shore it collapsed. With the aid of several local men the deer was loaded

in the pickup and taken to Moore Park, where it was cared for by the park superintendent."

The letter which won Callas the award and netted him the \$55 Herald and News award for the outstanding land owner of the year, came from a trio of California goose hunters. This letter said: "On our way north from Los Angeles it dawned on us that we had forgotten our tent pole, so we decided to stop at a farm and purchase a few two by fours to serve us in the corner of his field and set up our tent. This was on Sunday, Monday broke forth with a snow storm. Needless to say we were in sorry shape, but again Dean came to our rescue. He invited us to stay in his large work shop, and on our way in lit the

Idaho Spuds Alongside Slots  
 DETROIT (AP)—Detroit police are wrestling with a weighty problem. A thousand pounds of choice Idaho potatoes tumbled off the rear of a truck. A motorist was unable to catch the fast-moving truck driver, so he called police.

Now the spuds are neatly stacked in the property room, alongside illegal firearms, slot machines, and crap tables.

Lt. Marvin French says they'll be kept only 24 hours. The problem then: throw a departmental potato fry or ship 'em to some charitable institution?

KLAMATH BASIN POTATO SHIPMENTS	
34 cars	60 cars
Shipped Today	Same Day Last Year
5845 cars	6550 cars
1963-64	1962-63

TOO SOON  
 COPAN, Okla. (AP)—Last week this northeastern Oklahoma village tore down its jail for lack of customers. Yesterday burglars broke into a hardware store and stole \$1,000 worth of merchandise, Sheriff W. D. Spears said.

Weather  
 FORECAST—Klamath Falls and vicinity: Clear and continued cold through Wednesday; increasing cloudiness Thursday. High Thursday 25; low Wednesday night 5. High yesterday 28. Low last night 6. Precip last 24 hours .06. Since Oct. 1 7.80. Same period last year 8.73. Normal for period 5.95

DESERTION  
 TOKYO (AP)—Pyongyang radio said a South Korean air force officer Wednesday flew a fighter plane to North Korea. The Red radio identified him as Second Lt. Choi Man Chong. The broadcast gave no details.