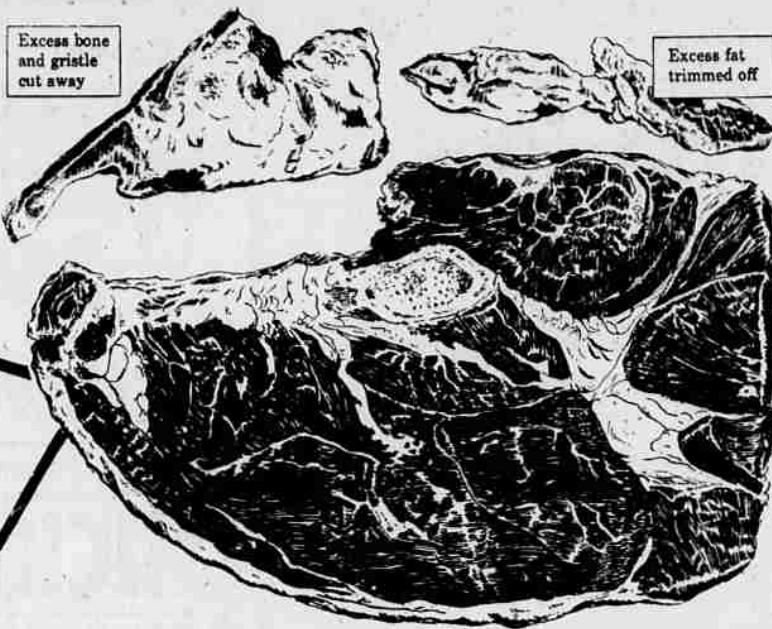


SAFEWAY MEATS are trimmed before weighing -SO YOU SAVE MONEY!

FOR EXAMPLE:
SIRLOIN STEAK



Top Grades Only of U. S. Government Graded Beef



Per Lb. **89¢**

BEEF IS A BETTER BUY TODAY!



Perhaps you have heard and read how cattle prices have declined since the Fall of 1951. We are happy to report that our retail prices for beef have likewise dropped. This illustrates a basic principle in our way of doing business. When the cost we have to pay for any item goes down -you'll find our price to you goes down, too. If you'd kept your own records, you'd know that retail cuts of top grades of beef cost an average of about 20c per pound LESS than they did in November of 1951. This is why beef is a better buy today... and why you should check the attractive beef values we have right now. For a free booklet giving facts from a recent survey of beef prices, write Safeway Stores, Incorporated, P.O. Box 660, Oakland, California.

MORE BEEF VALUES

T-Bone Steaks	lb.	98c
Sirloin Tip Steak	All meat lb.	98c
Beef Round Steak	Well aged lb.	89c
Pot Roast	Blade Cut, top grades lb.	55c
Pot Roast	Arm cut, top grades lb.	59c
Boiling Beef	Beef plate lb.	29c
Pure Ground Beef	Fresh Daily lb.	39c
Corned-Beef	Boneless lb.	49c

Rib Roast Top Gov't. Grades lb. **69c**

Fryers Cut-up, thoroughly cleaned. 1-lb., 12-oz., ea. **\$1**

Veal Roast Boneless Shoulder lb. **49c**

Picnics Pre-cooked and boneless 4-lb. can **3⁴⁹**

Miscellaneous Values

Leg O' Lamb Roast	lb.	75
Lamb Shoulder Roast, square cut	lb.	69
Lamb Chops, Small loin lb. 93 Large	lb.	75
Lamb Rib Chops, thick cut	lb.	75
Breast of Lamb for Stew	lb.	19
Pickled Prawns, Nates, 7-oz. jar		59
Fresh Oysters, med. size, Pint jar		59
Halibut steaks, Thick-flaky	lb.	59
Fresh Smelt, A real treat	lb.	39

EMPRESS - PURE PRESERVES

Grape - Plum - Apricot
Apricot Pineapple
or Peach... 20-oz. glass **3 for \$1**

Grade "AA" Large **EGGS**

"Cream o' the Cream" doz. **65¢**

LUNCH BOX, SANDWICH SPREAD

Make your Sandwiches exciting **Quart 59¢**

Busy Baker Crackers Thin Crisp Saltines 1-lb. pkg. **19¢**

Beverly Peanut Butter Regular or chunk 20-oz. jar **49¢**

Luncheon Meat Raths 12-oz. tins **29¢**

Cake Mixes Dromedary Yellow, Devil's food & white 3 pkgs. **69¢**

Cotillon Ice Cream All popular Flavors Pint **29¢** Quart **55¢**

Cream-Style Corn Country Home No. 303 Can **15¢**

Silk Toilet Tissue Look at this low price! Roll **5¢**

Highway - Sliced - Cling **PEACHES**

Slices or halves No. 2 1/2 Can **19¢**

LAC MIX - NONFAT **DRY MILK**

Each 1-lb. package makes 5 quarts 1-lb. PKG. **29¢**

FRESH COFFEE

Airway Coffee	1-lb. bag	90c	2-lb. bag	1.79
Nob Hill Coffee	1-lb. bag	92c	2-lb. bag	1.83
Edwards Coffee	1-lb. can	97c	2-lb. can	1.93
Instant Coffee	Edwards		2-oz. jar	51c

BEL-AIR FROZEN FOODS

French Fries	9-oz. pkg.	19c
Fancy Peas	Top quality 10-oz. pkg.	19c
Baby Lima Beans	10-oz. pkg.	29c
Orange Juice	Concentrated 6-oz.	19c
Lemonade	Concentrated 6-oz. can	18c

FRESH DAIRY FOODS

Cottage Cheese	Blossom Time Pint	29c
Montrose Butter	Sweet - fresh Pound	80c
Shady Lane Butter	Dairy fresh Pound	76c
Fresh 'AA' Large Eggs	Dozen	65c
Fresh Milk	Quart carton 2 for	49c

CHINESE SEAFOODS

Soy Sauce	Chun King 5-oz. bottle	19c
Chop Suey	Chun King No. 303 can	33c
Chow Mein Deal	Chun King Chicken No. 303 can	59c
Chop Suey Deal	Chun King - Beef No. 303 can	59c
Small Shrimp	Shady River 5-oz.	39c
Kippered Snacks	Conner No. 1/4 can	10c

Juice-heavy Grapefruit

8 lb. bag 49¢

Navel Oranges All you can get in totter bag at display **79¢**

Green Cabbage Nice fresh solid heads lb. **3¢**

PARSNIPS Extra fragrant and fresh lb. **10¢**

CELERY Crisp, green Pascal variety lb. **15¢**

MISCELLANEOUS VALUES

Sunnybank Margarine, lb	lb.	33
Mrs. Wright's Bread, 1 1/2-lb. loaf		24
Tea Timer Crackers, 1-lb. pkg.		37
Coconut Puffs, Jane Arden, 6 1/2-oz.		29
Sleepy Hollow Syrup 24-oz. bot.		54
Nu Made Mayonnaise, Quart jar		69
Pitted Pie Cherries Honeybird, No. 2 can		29
Westfair Prune Juice, 24-oz.		29
Potatoes, Smith whole peeled, 303 can		10
Stonecrock Sauerkraut, No. 2 1/2 can		15
Cherub Milk, Evaporated, Tall cans		14
Jell-Well Desserts, 2 Pkgs.		15
Royal Satin Shortening, 3-lb.		89
Mayday Salad Oil, quart bot.		69
Popcorn, unpopped, 2-lb. cello pkg.		39
Liquid Starch, Fauntleroy, Quart		21
Cal-Ore Wines, variety, Fifth		59
Italian-Swiss Wines, Fifth		79
Loganberry Wines, Honeywood, Fifth		98

LIBBY

Vienna Sausage	4-oz. can	23c
Lunch Tongue	6-oz. can	39c
Potted Meat	No. 1/2 can	15c
Deviled Ham	No. 1/4 can	22c
Corned Beef Hash	No. 2 can	33c
Dried Beef	2 1/2-oz.	35c

RATH BLACKHAWK

RIK RAK CLEANSER 3 14-oz. cans 25c	BABO CLEANSER 2 Reg. cans 27c	PARADE DETERGENT Lots of suds 19-oz. pkg. 32c	"ALL" DETERGENT For Automatic Washers 24-oz. pkg. 45c	WHITE MAGIC SOAP Granulated 23-oz. pkg. 25c
-----------------------------------------------------	------------------------------------------------	----------------------------------------------------------------	------------------------------------------------------------------------	--------------------------------------------------------------

