

Herald and News

FARM NEWS



Acreage Cut May Hurt Other Crops

In the nationwide referendum for wheat marketing quotas growers voted overwhelmingly for quotas and acreage reduction.

In the Pacific Coast states this resulted in nearly a million acres being taken out of wheat to be planted to other crops in 1954. 227,700 acres in Oregon, 137,600 acres in California, and 291,894 acres in Washington must be planted to something else other than wheat in 1954. This is a total of 997,270 acres to be taken out of wheat in the Pacific Coast states alone.

Support Price On 1954 Wheat Set

A national average price support for not less than \$2.20 a bushel for the 1954 wheat crop was announced this week by the USDA. This is 90 per cent of the August 15, 1953 wheat parity price of \$2.40. Support for this year's crop, now eligible for loan and purchase agreement, is a national average of \$2.21 a bushel.

To be eligible for wheat price support in 1954, a producer must (1) be in compliance with the 1954 wheat acreage allotment and all other 1954 allotments which have been or will be established for basic commodities, (2) obtain wheat marketing cards for all farms in the county on which he has an interest in the wheat crop.

If the wheat parity price as of July 1, 1954, is higher, the support level will be increased to reflect 90 per cent of the wheat parity price at that time. In no event will the support be lower than the \$2.20 national average announced this week.

There are no restrictions as to what this land is to be planted to, but undoubtedly most of it will be planted to barley, oats, alfalfa and potatoes.

With marketing quotas to be voted on by cotton growers in California undoubtedly another several hundred thousand acres will be planted to something else other than cotton.

It is generally believed that a part of this acreage will be planted to rice, but since rice is also a basic commodity supported at 90 per cent of parity an increase of acreage in that crop will lead immediately to marketing quotas and reduced acreage with little if any acreage allotment to new growers. This means that the majority of that acreage perhaps will also be planted to barley, alfalfa and potatoes.

Wholesale, Retail Price Investigated

Members of Congress and all segments of the livestock industry are showing interest in the reported widening of the spread between prices farmers receive for their cattle and the cost of beef at retail.

The Bureau of Labor Statistics reports that from July to August the retail price of beef and veal rose 6 per cent despite abundant supplies and generally low cattle prices.

The Bureau of Agricultural Economics and other agencies of the Department of Agriculture are examining the spread between the price the farmer receives and the price the housewife pays for beef.

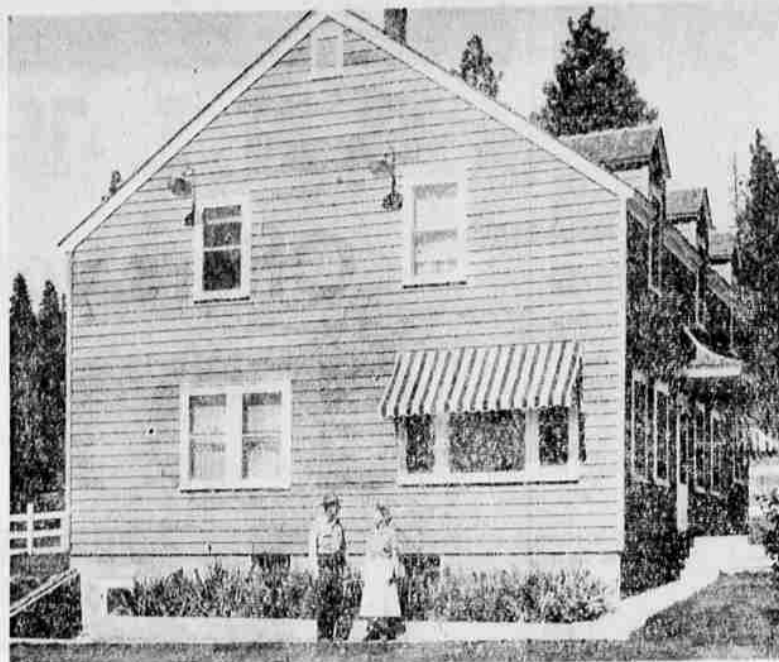
Henry Gerber Awarded Title Of "Stockman of the Year"

By OTTO ELLIS
The Klamath County Cattlemen's Assn., made wise choice when they made their selection for "Cattleman of the Year" for Klamath County.

The man winning this award is Henry C. Gerber, who is not only another 950 head.

The grazing service land is all fenced and has been operated to maintain a maximum of forage cover. There are three stockmen running cattle on this area and it makes up Grazing District No. 1. This was the first grazing district

Act came to Klamath Falls to work with cattlemen in setting up a district and to outline the procedures to be followed in control of the public domain, Henry Gerber wrote most of the features included in the program that the cattlemen believed to be desirable in



HEADQUARTERS FOR THE HORSEFLY RANCH is this large house. Discussing ranch problems are Mr. and Mrs. Henry Gerber, owners. Gerber is Klamath County's "Cattleman of the Year".

a prosperous stock raiser and farmer but was a successful businessman in Klamath Falls before taking over the management of the ranch over 20 years ago.

Born in Sacramento, Calif., Oct. 5, 1904, Gerber came to Klamath County when still a small boy and grew to high school age on the ranch near Bly.

The ranch home at that time stood in what is now the Gerber Reservoir. The headquarters were moved to the Horsefly Ranch when the reservoir was built by the Bureau of Reclamation in 1923.

Following graduation from the Klamath High School he attended the University of Oregon for one year and then went to work for the American National Bank, now the United States National Bank.



HENRY GERBER "CATTLEMAN OF THE YEAR"

After several years in the banking business he accepted a position as an appraiser for the Federal Land Bank and when the Klamath Production Credit Association was formed in 1934, Gerber was selected as an inspector and is still acting in that capacity.

The Gerbers have three daughters, Margaret, a student at Mills College, Oakland, Calif.; Marilyn attends the University of Arizona and Sylvia is a student at Klamath Union High School.

proper handling of this range land.

An outstanding irrigation development and land reclaiming program has been underway on the ranch since Gerber took over its operation. Much of the irrigated pasture and hay land was originally swampy ground which failed to produce a maximum of forage because of poor drainage during the early part of the season.

In 1938 it was decided that the productivity of the land could be increased by breaking up the native meadow, providing drainage, leveling the ground and providing a good irrigation layout.

The first attempt at this improvement work proved so successful that the program has been continued until a total of 500 acres has been reclaimed and is producing excellent hay, pasture and oats.

Another 200 acres was leveled in Langell Valley and is used for growing potatoes, alsike clover and barley.

To further increase forage production, sulphur fertilizer has been applied to alfalfa and Anhydrous Ammonia to the green pasture. On land from which one crop of hay was taken before being pastured, around three tons of hay has been cut. When two crops of hay are cut before pasturing a yield of five tons per acre was obtained.

The buildings, corrals and other improvements assembled on the ranch make its management a pleasure and its operation efficient.

Adequate records are and on an early phase of the operation both

FOOT FINALLY FEELS EARTH
RIO DE JANEIRO, Brazil (AP) — Michael Patrick O'Brien, the man without a country who has been shuttling between Oriental ports and on a trans-Atlantic liner for more than two years in search of a haven, set his foot on solid ground here Tuesday. He was admitted to come ashore today by plane for the Dominican Republic, which has agreed to receive him.

Farm Loans

LONG TERM
LOW RATE

NO STOCK COMMISSIONS

BARNHISEL AGENCY

112 So. 8th Ph. 4195
Klamath, Lake, Siskiyou and Madoc Counties
Authorized Mortgage Loan Solicitor for

THE PRUDENTIAL INSURANCE COMPANY OF AMERICA

VODKA COLLIER

So smooth it leaves you breathless

Smirnoff
the greatest name in VODKA

80 proof Made from 100% grain neutral spirits. Pierre Smirnoff, Inc., Hartford, Conn.

Don't Miss Sieglers DEMONSTRATION

THURS.-FRI.-SAT.
OCT. 22-23-24

JIM HERZIG, Sieglers Heater expert, will be at Hafter Furniture Thursday, Friday and Saturday, October 22, 23, and 24, to give you a personal demonstration on the famous new improved Sieglers Heater.

ALL DAY THURS. FRI. & SAT. AT HAFTER'S STORE
EVENINGS AT SPUD FESTIVAL AUDITORIUM



Is your heater FOOLIN' and FREEZIN' you?!

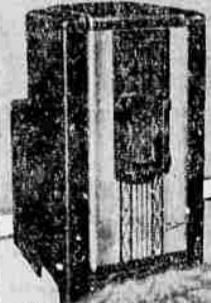


DID YOU EXPECT A WARM HOME WHEN YOU BOUGHT YOUR HEATER?

- Are you confined to one room?
- Are your floors icy cold?
- Are your ceilings overheated?
- Are your fuel bills too high?

SWITCH TO Sieglers OUTHEATS 'EM ALL!

- A compact cast iron furnace in a porcelain cabinet—no costly pipes or registers to install
- ★ LETS YOU LIVE IN EVERY ROOM
- ★ GIVES YOU WARM COZY FLOORS
- ★ ENDS OVERHEATED CEILINGS
- ★ SAVES YOU UP TO 50% IN FUEL
- ★ MONEY BACK GUARANTEE



More and better heat over the floor than any stove.

Tropical Floor Heat
everybody wants it—only Sieglers has it!

Sieglers PATENTED AUTOMATIC OIL or GAS HEATERS WITH THE EXCLUSIVE TWO-IN-ONE HEATMAKER

Furnace volume heating for a fraction of the cost!

Don't fail to see this famous stove in action—for you and your children's comfort and health . . . investigate this HEATING SYSTEM.

Harry HAFTER

one block of furniture

Phone 4878

833 Klamath Ave

FERTILIZERS

SULPHATE of AMMONIA
SUPER PHOSPHATE
AMMONIUM NITRATE

16 - 20 - 0
SOIL SULPHUR
GYPSUM



If It's Fertilizers You Want
Simplot Soilbuilders Has It
Price and Quality Is Right

SIMPLOT SOILBUILDERS

2052 Washburn Way

Phone 2-1438

PEST REPORTER
News from the
SPRAY CENTER

SOIL SULPHUR

We can supply you with soil sulphur from the car, or from stock. Earn a discount by unloading your needs from the car. We will have cars coming in all through the Winter.

QUACK GRASS

Don't overlook this ideal time to apply TCA to your field Quack Grass problems. Application should be followed with a light disking.

DUPONT 90% SODIUM TCA
or
DUPONT CMU
for your Quack Grass problems.



CATTLE SPRAYING



DuPont Livestock Spray and Dip No. 30 is the dual-purpose beef cattle spray. DuPont Decanote, or Lexone, for individual usage . . . Rotenone is also in stock. We can fix your hoses, or fit you out with a complete rig, spray guns or hose kits.

FOR THE MRS.

Ed says . . . despite the bad weather, I spent Sunday planning a lily garden from Jan de Graff lilies, the size of the bulbs, and their quality, were a pleasure to handle. Over fifty of them will be a beautiful display. I used bone meal and peat moss for root substance and covered the bulbs with vermiculite to give



it drainage, also to identify that area in case I dug into it next spring. This is a good trick for all bulbs planted. There is still time to plant lilies, daffodils, and tulips, for spring and summer bloom next year.

SPECIAL—Planting stock daffodils 2.25 per 100 bulbs. A good selection of large bulbs, shrubs, trees are available for your inspection and selection, technical help available.



FOR SERVICE, telephone: Walt—3528 Klamath Falls; George—2100
Newell; Ed—769 Malin; Spray Center—7-2391 Tulelake

The Spray Center

Telnet-one Tulelake 7-2391
East-West Road and Main—Tulelake, Calif.