

Tulelake Alfalfa Okay If Proper Care Taken In Processing And Shipping

TULELAKE—Some of the best alfalfa grown out of doors is grown in the Tulelake Basin. It is higher in protein and mineral content and lower in fibre content than alfalfa grown in many competing areas, according to information received here from the University of California, as a result of many analyses run at the University on alfalfa grown in the Tulelake area.

Therefore, top quality alfalfa hay can be produced here, if properly cured and handled to preserve leaves and green color throughout the drying operation, and steps are taken early in the dormant season to eliminate weeds and foreign matter.

These facts were presented to a group of alfalfa growers by Ken Baghott, Tulelake farm advisor, at a meeting in Tulelake, arranged by the Tulelake Growers Association Miscellaneous Crops Committee.

Bill Powell, Chairman of this committee, in opening the meeting, stated that his committee had become interested in hay improvement and marketing project after a survey of the coast area indicated that there was a ready market for top quality alfalfa hay, but that there was some objection on the part of stockmen to hay grown in the Tulelake Basin, because they had received some shipments of poor quality hay in this area.

Ross Aubrey, Federal State Inspector, told the alfalfa growers that his department would provide for voluntary hay inspection at a reasonable cost to these alfalfa growers, who want to take advantage of this method of providing a common understanding between grower and buyer as to hay quality.

It was brought out by Baghott and veteran alfalfa hay growers, that alfalfa hay quality is either preserved or lost, depending on the type of drying operation used during curing, raking, baling, and handling. Baghott stated that through his agronomy department at the University of California, he would be glad to arrange some haying demonstrations to assist growers in putting up hay of top quality.

It was also brought out, that in the past, some hay shipped to coastal counties of Oregon in tight boxcars, had reached their destination in poor condition. George Morgan, of the Southern Pacific Railroad, suggested using stock cars for shipping hay during the summer months in order that the hay would have plenty of ventilation, thus eliminate tight boxcar sweating. He also stated that his

railroad would co-operate in furnishing stock cars for this purpose if the growers wish to request them.

In discussing freight rates, it was found that rates from the Tulelake area to coastal points were considerably below freight rates from competing areas, who have in the past furnished considerable hay to the coastal markets; therefore growers in this area do have considerable advantage from the freight standpoint.

The alfalfa hay growers present at this meeting indicated a desire to participate in this program and Baghott was asked to arrange for some alfalfa haying demonstrations. Aubrey was asked to provide voluntary hay grading in this area; to provide mutual understanding as to hay quality between grower and buyer. They asked the railroad to be in a position to provide stock cars for hay shipments during the summer months and the GA Grower's committee to publicize this program in the coastal areas and indicated that there would be at least 1,000 acres of alfalfa hay grown for shipment under the above program this year.

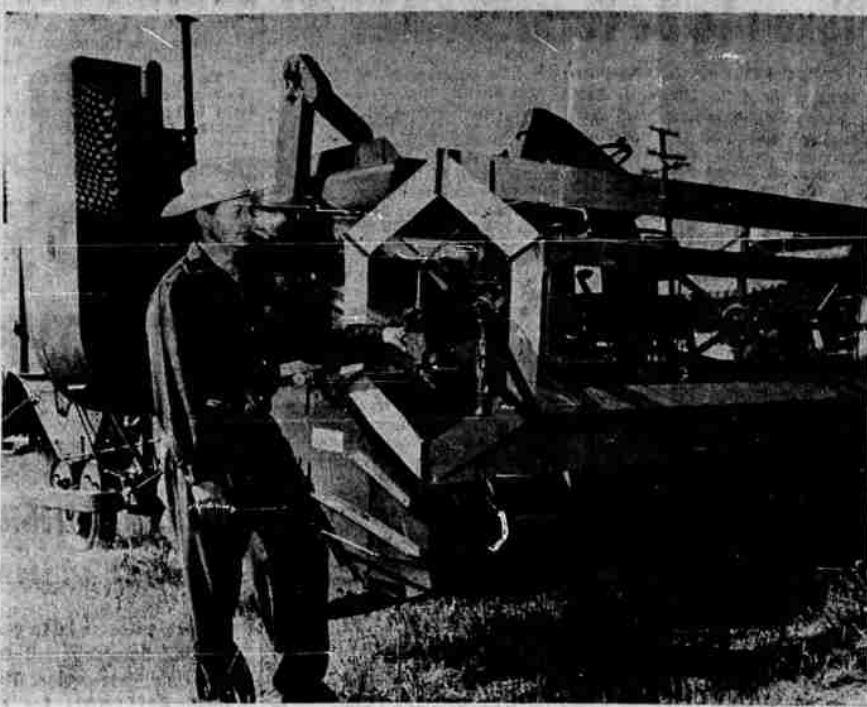
Alfalfa growers, who are interested in co-operating with such a program, are asked to contact either Baghott's office or the Tulelake Grower's office.

It was also agreed to ask that the hay market report list Tulelake hay separately from other areas this year and that this information be disseminated in California and Oregon market reports, as a means of advertising Tulelake hay and to help establish a market price for Tulelake hay.

Beet Pulp In Silage Helps

Dried molasses beet pulp, which increases palatability of silage, has another strong point as a grass silage preservative, according to tests at Oregon State college.

Dr. I. R. Jones, OSC dairy husbandman, says the beet pulp absorbs valuable plant juices that often drain from the silo. The juices are high in protein, fermentable carbohydrates, and minerals. Dr. Jones and J. H. Beyers, research assistant, are conducting further studies to see if savings in plant juices, estimated at \$2 for each ton of silage, will offset increased costs of the preservative.



DON KENYON has added a new line of farm machinery at his South Sixth and Plum headquarters, the Massey-Harris. He's shown here standing beside a Model 90 harvester that will take a 12-foot cut as it goes.

Herald and News

FARM NEWS

Beef To Continue As Good Buy For Housewives For Next Two Or Three Years

CHICAGO: Beef will continue to be a good buy for housewives for the next two or three years according to National Live Stock Producer, America's leading live stock magazine, which discusses the five major habits of beef cattle prices in the July issue.

In brief, here are the five major beef cattle price habits as determined by an analysis of records since 1870:

Habit No. 1:—Beef cattle prices reach a high point every 14 to 16 years, and low points at similar intervals—about midway between the high points. This swing from high to low and back again is known as the cattle price cycle.

Habit No. 2:—Cattle prices tend to decline about half from their high to low points. Average dollar value of cattle at the four peaks 1885, 1889, and 1915 and 1929 was \$80.17 per head. Average at the four low points in 1891, 1905, 1923 and 1934 was \$16.04 or 47 per cent less. Average purchasing power declined from 135 to 68 or 50 per cent during these periods.

Habit No. 3:—Cattle prices are lower than hog prices most of the time. Since 1909, cattle prices have been higher than hog prices in 10 years and lower in 33 years. During this period prices received by farmers have averaged \$9.61 per cwt. for cattle and \$10.76 for hogs or 12 per cent higher.

Habit No. 4:—When beef supplies exceed pork supplies beef prices become sharply lower. Since 1903, there have been four years: 1910, 1917, 1918 and 1947 when beef supplies were higher than pork supplies. In those years, per capita supplies were 62 pounds of pork and 68 pounds of beef. Prices of cattle averaged 10.45 or 33 per cent less than the average \$15.55 price of hogs.

Habit No. 5:—Consumers spend

a fixed portion of their income for meat. This has ranged from 5 1/2 to 6 1/2 per cent regardless of the size of income or the supplies of meat.

Habit vs. the Present:—Cattle prices began a downward cycle in 1952. If the cycle follows previous patterns cattle numbers will increase from the present 94 million to about 100 million head by 1956 at which time the supply of beef marketed will be 20 per cent greater than at present. Beef supplies for 1953 are estimated at 11 per cent above pork supplies.

WTC Signs Up Entomologist

Dr. Julius A. Rudinsky has been added to Weyerhaeuser Timber company's forestry research staff as assistant forest entomologist. He will participate in a special research project designed to combat the Douglas fir bark beetle epidemic in southwestern Oregon.

Rudinsky, working with Vaughan McCowan, Weyerhaeuser forest entomologist, has been at the company's Coos Bay branch since June 22. An ecology and life-cycle study is being conducted by Weyerhaeuser in an effort to discover methods for minimizing damage to forest resources by the beetle.

A native of Czechoslovakia, Rudinsky was graduated from the University of Bratislava with a degree in forestry in 1944. He departed from his homeland on Christmas day, 1941, just ahead of the Communists. He studied at the University of Goettingen in Germany for five years while waiting for an opportunity to come to the U. S.

Rudinsky studied entomology at Ohio State university from 1949 until 1953, receiving his doctorate in the latter year.

Seed Spud Certification Applications Now Taken By Klamath County Agent

Applications for certification of seed potatoes are being taken now at the Klamath County Agent's office.

Application can be accepted up to start of field inspections which may begin about July 20.

The Agent's office points out that adequate production of local certified and foundation seed is the strongest single factor in high production of good quality commercial russets.

Agents say dependence on imported seed is impossible because a sufficient supply of good quality seed from outside sources cannot be assured even though growers might be willing to pay extra costs of transportation and commissions.

Experience has demonstrated that good quality of locally produced seed perform as well or better than imported seed stock.

Certification of seed potatoes involves 2 field inspections during the growing season. Purpose of these inspections is largely to determine percentage of virus diseases present. Symptoms of virus diseases are expressed in the growing plants. Certain bacterial diseases also show plant symptoms.

Certification also involves inspection at digging time and later. This inspection attempts to check for presence of nematode or bacterial ring rot. Seed producers understand that a seed lot is ineligible for designation as certified or foundation seed if any ring rot or nematode is present.

A final check on seed is pro-

duced by test planting in greenhouses at Corvallis. Purpose of test planting is principally to determine whether there has been any spread of virus diseases.

No seed lot is eligible for rating as foundation seed until test planting counts are available.

Fees for these certification services are \$2.00 per acre.

Ore. Cannery Feed Forces

Oregon growers and canners will put their collective shoulders to the wheel of the nation's defense program again this year by supplying an estimated 12,504,000 cans of fruits and vegetables for use by the armed forces.

At the request of the department of Defense, every canner will "set aside" part of his pack of 8 of the state's major food commodities. The quota for each canner is determined by a U. S. Department of Agriculture formula, ranging from 3.8 to 22.8 per cent of the various Oregon packs for previous base years, according to Dr. Glenn Cunningham, research economist for American Can Company.

"The important relationship of the state's farmers, canners and can-makers to our national defense is dramatically illustrated by this program," the can-making firm's representative said. "Oregon foods packed in Oregon-made cans contribute materially to making the U. S. forces the best-fed military units in the world."

String beans head the list of the state's vegetables to be channeled to the armed forces with approximately 5,208,000 cans slated for defense use. The largest quotas among Beaver State fruits will be Bartlett pears, with 2,136,000 cans. Other Oregon set-aside requirements estimated by Dr. Cunningham include green peas, 1,992,000 cans; sweet corn, 884,000 cans; blackberries, 792,000 cans; carrots, 768,000 cans; cherries, 552,000 cans; and peaches, 72,000 cans.

For handsome sidewalls and trim use

Dutch Boy HOUSE PAINT 627 in 5's

BASIN BUILDING MATERIALS
Klamath Falls Yard
4784 So. 6th
Phone 2-2563
MALIN YARD
Phone 107

BULL SERVICE OR RENT PHONE 3924 CECIL DREW

vided by test planting in greenhouses at Corvallis. Purpose of test planting is principally to determine whether there has been any spread of virus diseases.

NEW!

WADE RAIN POWER-ROLL

PUTS IRRIGATION WATER ON WHEELS

You Save Time & Labor to Produce Crops Cheaper!

Entire Sprinkler Line moves in new Irrigation position under its own power... no wheels! One untrained man or boy can do the job... in minutes... simply as Walking Across the Field. POWER-ROLL saves expensive manpower, cuts production costs... protects your profits!

WADE RAIN SPRINKLER IRRIGATION

Features that cut crop-growing costs... save manpower, time, water!

- Self-Draining "LOKS-IT" Gasket Moves Sprinkler Lines under and fast... or between Lines in Ground... no wheels! One untrained man or boy can do the job... in minutes... simply as Walking Across the Field.
- Famous Self-Locking Coupler Just push it on into coupler from one side... no tools... it is locked, ready for water pressure.
- WADE RAIN Coupler now made stronger by Tensar-Field Casting Process for regular longer life!
- PLAN NOW... Without Obligation, our trained Field Technicians will call to help you select a system... installed in your farm!

WADE RAIN The Leader in Features... Call Today!

Klamath Feed Co. Please send me complete information and free illustrated literature on POWER-ROLL WADE RAIN Sprinkler Irrigation

NAME _____
ST. & BOX _____
CITY _____ STATE _____

Pest Reporter

News and Scuttle on Weeds and Bugs

TREE SPRAYING

Quite a few people have been whistling for Birtwistle on account of so many bugs, aphids and beetles getting into their trees and shrubs. We are in a position to handle your tree and shrub spraying for you; however, the cost of sending up the equipment for one job is prohibitive. Please give us a break and let us know a day or two ahead. We also have tree spray materials if you wish to do your own. It is a good time for that DuPont Water Soluble Plant Food.

DUST SERVICE

We try to give you better service with your Dust than you are able to get other places. Prices being competitive with other Dust, and tops in quality. You can have your fields checked prior and after dusting to be sure of your results. We have a flying service operating out of Klamath Falls for Klamath, and one out of Tule for Tule.

"Don't Let the Flies Get On Your Cows"

SEE 'EM RUN SEE 'EM GO

Try the Spray Center for all types of cattle spray, dairy or beef, or we do cow spraying too. A card will bring you sketch and instructions for building and operating the Back-Rubber that works so good on ranges near the salt blocks and watering holes. I was up to Dry Lake yesterday and there are a lot of flies on the cattle on the range. One can of Marlate 2-MR makes 5 gal. of solution treats the Back-Rubber for 5 months, will take care of 100 head of animals per Back-Rubber. Drop in at The Spray Center for further information.

SPECIALISTS

We've all heard the corny jokes about specialists, pulled by 50% of the technical men you hear in speeches. The general theory being that a specialist is away from home. We try to specialize in chemicals alone in our home area where you know us. Our line is chemicals only. They are not a side line with us. They are our bread 'n butter. You don't have to buy anything else to get chemicals from us.

CLOVER DUST

Particle size-amount of sulfur. Seems as though I went against some sales policy on the discussion last week. Simple arithmetic will show you the amount of leaf surface to be covered by 20 lbs. of Dust with 50% Sulfur, the impossibility of mildew control to any extent. DuPont's technical man called me on the particle size, and says that Deenate not only is small, but is screened so the particle size is consistent.

If just don't pay sometimes to try to be an expert around where people know you.

DROP IN AT THE SPRAY CENTER, YOUR FRIENDLY HOUSE OF CHEMICAL SERVICE. EVERYTHING FOR THE HOME, YARD AND GARDEN AND FARM CROPS: IN THE LINE OF INSECT, DISEASE AND WEED CONTROL.

The Spray Center

Telephone Tulelake 7-2391
East-West Road and Main—Tulelake, Calif.

RANCH LOANS

Long Term Low Rate

NO FEES STOCK COMMISSIONS

BARNHISEL AGENCY

112 So. 8th Phone 4195
Klamath, Lake, Siskiyou and Modoc Counties

Authorized Mortgage Loan Solicitor for
The Prudential Insurance Co. of America
Home Office, Newark, N. J.

FARMERS METAL

Irrigation Turnouts

3 ft. long x 6 in. diameter. At the price of **\$240** each

these, if one isn't enough use two.

Remember, it's
Crater Lake at Tulelake

Crater Lake Machinery Company

TULELAKE, CALIF.
Telephone 7-1361

HAYING SEASON "RED HOT" Specials!

- No. 122 Used International tractor mower, trailer mower. HERE IS A BUY! **\$95.00**
- No. 163 Used John Deere side delivery rake. Ready to rake hay **\$150.00**
- No. 308 Used Case two wire baler with auger cross conveyor. Why spend money having your baling done when you can buy a baler for only **\$350.00**
- No. 171 Used Ferguson Tractor - good for raking or pulling those hay wagons. Runs good **\$650.00**
- No. 152 Used SC Case Tractor equipped with power mower. Used very little **\$1045.00**
- No. 128 Used Model "R" Minnie Moline Tractor including rubber tired trail mower. Looks good, runs good, is good. **\$995.00**
- No. 254 Used John Deere Pick Up Hay Chopper. Don't fail to see at **\$1250.00**

★

LOTS OF OTHER used mowers, rakes, balers and tractors.

Above prices good until July 15th Only

★

Crater Lake Machinery Co.

1410 So. 6th Klamath Falls Phone 2-2544