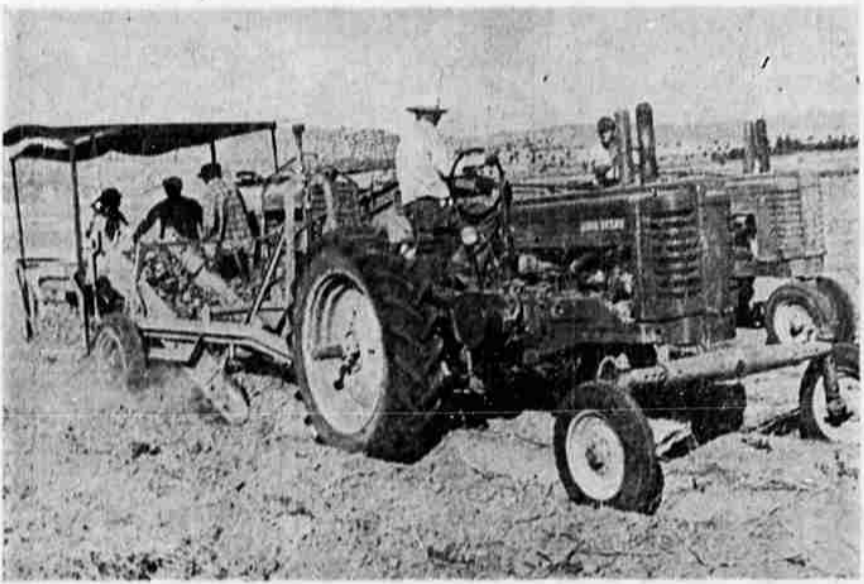


ONE OF THE FIRST digger-bulker type machines ever developed in this country, and probably one of the early ones developed anywhere, was this one designed and built by Frank Bell of the Bell Company many years ago. This one is in operation on the Wilson Brothers place in the Malin area. Bell pioneered digger-bulker machinery in the Klamath country.



DIGGING AND BUCKING on Tulelake's sandy loam soil is this Bell machine. Tractor at right is towing bulk hauler. Picture was taken on Lewis Kandra place.

# Herald and News FARM NEWS

MALCOLM EPLEY, Jr.  
Farm Editor



## Garden Tool Storage Tips

To save money and time on next year's garden and lawn, put tools and supplies away in good condition this fall.

That's the advice of Hal Schudel of the farm crops department at OBC. He says many home owners don't realize that even with small gardens and grounds, a considerable investment is built up in equipment and supplies.

An inventory of these items would show that it pays to save tools from winter rusting and corrosion by putting them away clean and dry. It's worthwhile to have all leftover garden chemicals by keeping them in covered containers so they are kept dry and not allowed to get cold enough to freeze.

High shelves or ceiling racks in dry garages or basements are good places to park tools and supplies for the winter, Schudel says. There they will be dry and out of reach of children and pets.

Clean sprayers thoroughly, Schudel advises, because liquid sprays left inside may clog and corrode

the metal parts to the point they will have to be replaced in the spring. To clean sprayers, first empty the leftover spray, then take the sprayer apart and rinse thoroughly several times with hot water, let dry, put together loosely and store in a dry place.

If you use weed killers, have one sprayer for this purpose and label it accordingly, Schudel says. This will avoid such a disastrous mix-up as combining a weed killer with an insecticide or fungicide. Dust-ers should be emptied also and blown out before storing away.

Such garden necessities as stakes, poles and cords that are so often left outdoors to rot over the winter, should be cleaned and put away in a dry place.

Schudel's final tip is to make a list of tools and supplies as you store them away. From this list you can tell what you need to order next spring.

## Packer Sales Top Markets

Direct sale to packers is the chief single method of marketing livestock used by West Coast producers, indicates a recent report compiled by agricultural experiment stations of the western states and the U.S. Department of Agriculture and received by Farm Advisor Ken Baggett, Tulelake.

Thirty-five per cent of all cattle, sheep, and hogs moved in this manner in 1949. Another 22 per cent of all livestock was sold through terminal markets. Auctions, with 18 per cent of total; local dealers and truck buyers, with 15 per cent; and direct sales to other farmers of 10 per cent, represented other methods used by these producers.

During the year studied, approximately a third of all cattle sold on the Pacific Coast went direct to packers, about 21 per cent moved through terminal public markets, and 24 per cent were sold to dealers. Only limited use of auctions occurs with sheep.

For hogs, sales were about equal-

ly divided among terminal public markets, auctions and packers, with direct sales to packers somewhat larger than the other two methods.

**St. Joseph ASPIRIN**  
WORLD'S LARGEST SELLER AT 10¢

# Weevils can cost you 50¢ to 80¢ a bushel!

## Control stored grain pests with

# DOWFUME® EB-5

Now is the ideal time for treating grain in farm and elevator bins—to stop insect damage before it starts! Treatment during early storage season usually gives good protection until spring.

Dowfume EB-5 (containing ethylene dibromide) is remarkably efficient in controlling stored grain insects, particularly those infesting the surface layer. Excellent penetration and high insecticidal toxicity make it ideal for fumigation of stored grain at all levels of the bin.

When properly applied, Dowfume EB-5 has no harmful effects on grain. It leaves no off-odor or taste, nor is it inflammable or explosive. The chemical is applied by spraying evenly over the grain surface through a length of 1/2 inch pipe without a nozzle. Either a hand or a power sprayer can be used. Dowfume EB-5 is safe to handle when reasonable precautions are taken to prevent inhalation of vapors and contact with the skin.

Ask your dealer—he knows his business



THE DOW CHEMICAL COMPANY  
San Francisco  
Seattle Los Angeles

## Cow Palace Readies For Stock, Horses and Rodeo

San Francisco's Cow Palace was the scene of feverish activity this week as thousands of head of fine horses and purebred livestock converged in the huge pavilion for the opening Friday evening (Oct. 31) of one of the nation's greatest combination animal classics.

In the newly surfaced tank area, rehearsals were in progress for the world-renowned Musical Rodeo of the famed Royal Canadian Mounted Police whose superb horsemanship and daring will headline this year's entertainment spectacle.

The scarlet tunics of the Mounties mingled with the shirts of top cowboys from the mountains, plains and sagebrush states and the classic riding habits of the horse show entrants.

Luxurious straw bedding has been placed in the hundreds of box stalls to receive the pick of the nation's hunters, jumpers, fine saddle and harness horses, show ponies, Western stock, Palomino, parade and trail horses which will compete in the horse show.

Similar preparations were being made in the spacious livestock barns for 3,229 head of the finest beef and dairy cattle, sheep and swine attracted by livestock premiums which this year have reached an all-time record high of \$96,366.

The Grand National, mighty combination of livestock exposition, horse show, rodeo, cutting horse championships and spectacular Western arena specialties, will dedicate its opening performance, Friday to the Armed Forces.

It will continue through Nov. 9, with matinees intervening Saturdays and Sundays.

Tickets for the fourteen arena show performances are on sale at the Cow Palace, downtown box offices in San Francisco and Oakland and outside the metropolitan area at all Pacific Grehound ticket agencies.

### BULL SERVICE

Your Place or Mine.

Phone CECIL DREW 3924

### FENCES NEED FIXING FOR WINTER? check with

## HEATON'S

### FOR GREATER VALUES IN

- ★ BARBED WIRE ★ TEE and ANGLE STEEL FENCE POSTS
- ★ WOVEN WIRE ★ STAPLES
- ★ ALPRODCO LIFETIME ALUMINUM GATES

## HEATON MACHINE AND SUPPLY

428 Spring St., Klamath Falls Phone 2-3427



## New PARTS FOR OLD!

SAVE YOUR WORN "CAT" PARTS THEY CAN BE REBUILT!

To help keep your present "Cat" equipment at work, we have added new parts services. Now we can rebuild many critical worn-out parts to "like-new" condition. These parts are built-up, precision finished and fit like the originals... and they give a long work life. Cost is low. Our stock of factory-made parts is tops in the industry.

These parts services assure a longer life for your vital "Cat" equipment... insure a drop in down-time. Come in and see our parts rebuilding facilities in action... see what they mean to you and to your equipment. Do it today!



YOUR CATERPILLAR DEALER

## Crater Lake Machinery Co.

1410 S. 6th Phone 2-2544

## BUTLER Steel Buildings

A Product of Butler Manufacturing Company



### Industry

Ready to occupy in days instead of weeks, for plant expansion or new construction. Fire-safe. Weathertight. Full usable space at lower cost per square foot. Longer life with less maintenance.



SOLD AND RECOMMENDED BY

## HEATON MACHINE

### AND SUPPLY

428 SPRING Ph. 2-3427

# J.W. KERNS

OREG., LTD.

734 South 6th Phone 4197  
Klamath Falls, Oregon

Klamath Basin Distributors For  
Dow Chemicals... Sodium TCA in  
Stock at all times !!!

## Soil SULPHUR and SULPHATE OF AMMONIA

### NOW IN STOCK!

Plow or disc in with stubble and straw for best results.

ALSO...

### FALL APPLICATION OF SODIUM TCA or POLYBOR CHLORATE TO CONTROL QUACK GRASS!!

Polybor Chlorate around buildings, fence rows, lumber piles for fire protection... eradicates dangerous dry grasses.

Non Poisonous... Non Inflammable

See us now for more requirements of these materials

# J.W. KERNS

OREG., LTD.  
734 S. 6th Phone 4197  
Klamath Falls, Oregon

# Your Halloween Treat

DELIGHTFUL! DELICIOUS!

## PUMPKIN CENTER BRICK ICE CREAM

TEAMED WITH HOT, CRATER LAKE CHOCOLATE DRINK (CHOCOLATE MILK HEATED) M-M-M-M!! YOUR PARTY OR DINNER WILL WIND UP WITH A SPARKLING, TASTE-TANTALIZIN' BANG!

FROM YOUR GROCER OR CRATER LAKE ROUTE MAN

# KLAMATH FALLS CREAMERY

HOME OF Crater Lake Dairy Products