

Proper Handling of Alsike Straw Provides Beef Feed

Each year thousands of acres of alsike clover straw is burned or destroyed in the Klamath Basin. Farmers do not realize that alsike clover straw has considerable food value if properly handled. Tests run in the Tulelake area have shown that alsike clover straw can be used as a winter roughage for beef cattle.

Alsike clover straw taken from a Tulelake field showed 5.3 per cent protein and 41.7 per cent crude fiber. (The fiber content of a feed is of much importance in livestock feeding, for the higher the fiber

content the less digestible and therefore the less nutrients a feed contains.) Although this indicates that alsike clover straw is not as good roughage as alfalfa, if it is properly balanced with a protein it does an excellent job of overwintering feeders and brood sows.

One Tulelake farmer has overwintered 50 head of registered Hereford cows on a mixture of clover straw and alfalfa hay. The cows calved out in the spring and were put on summer range where they gained satisfactorily.

One precaution the stockman should make in feeding clover straw is to try to feed straw that has not been defoliated with high rates of oils. No injurious results have been reported by feeding the clover straw where it has been defoliated with 10 gallons of oil and 1 quart of dinitro. It is advisable to feed clover straw that has not been treated with oil but many stockmen have reported satisfactory results feeding defoliated straw.

A suggested ration for beef cattle would be clover straw, barley and beet pulp. Some good quality alfalfa hay should be fed with the straw to insure a source of vitamin A and to increase the protein supply slightly.

Farmers are urged to bail the clean fields of alsike clover and to use the hay as a supplemental feed. Further information can be obtained at the Tulelake Farm Advisor's Office.

Cheaper Feed Set For Turkeys

Cheaper feed for Oregon turkey growers in 1953 was predicted by W. A. Berge, Portland, feed manager of the Oregon Egg Producers, at the annual September meeting of the Oregon Turkey Improvement association at Oregon State college.

Berge said 3 per cent more feed per animal unit is in the Oregon picture for 1953 with a decrease in feed prices of \$3 to \$7 a ton from 1952 levels.

Broad Breasted Bronze turkeys should be Oregon growers' best bet on the export market, according to a marketing panel conducted by Noel Bennion, Oregon State college extension poultry specialist. The panel said Broad Breasted Bronze toms are in high demand but it warned against production of Beltsville Whites in excess of state needs. Production of Beltsville Whites and roasters has increased faster than local consumption, it was noted.

More than 200 turkey growers attended the one-day session to elect officers and to adopt resolutions. Association members voted to increase the minimum width of Broad Breasted Bronze breeding flocks from 3 1/2 to 4 inches under the Oregon Turkey Improvement program.

Loren Johnson, Scappoose turkey breeder, was elected president of the association for the coming year. He succeeds Harold Davis of Minnville.

COPCO Stock Goes On Sale

A nationwide syndicate jointly headed by Blyth & Co., Inc. and the First Boston Corporation is offering publicly today 250,000 shares of common stock of the California Oregon Power Company at a price of \$26.50 per share.

Proceeds from the sale of the common stock, together with the proceeds from the proposed sale of \$7,000,000 of first mortgage bonds, 1982 Series, which the company expects to offer at competitive bidding later this month, will be used to refund \$12,000,000 of bank loans which the company obtained to finance its current construction program. Such additional net funds the company may receive will be used to reimburse the treasury for income expended for plant additions.

The California Oregon Power Company is an operating public utility incorporated under the laws of the State of California. Its principal offices are in Medford, Oregon. The company is engaged in the production, transmission, distribution and sale of electricity in the southern part of Oregon and the northern part of California.

Due to a continuing increase in the business activities a population in the area served by the company, there has been an increase in sales to residential and industrial customers and a reduction in sales of electric energy at wholesale. This necessitated a large construction program, which includes the expansion and development of the hydroelectric potential of the upper Umpqua River and its tributaries in Douglas County, Oregon. The plan covers the construction of eight hydro plants in the north Umpqua project area, five of which are on that river and three on tributaries in the immediate vicinity.

Bark Wastes' Value Seen

Importing of about 70 per cent of this country's tannin requirements and the major portion of its natural wax needs may be unnecessary if the supplies which occur in bark wastes of several Oregon trees are tapped.

According to Dr. E. F. Kurth, chief of chemical research at the Oregon Forest Products laboratory these useful products have been found in commercial abundance in ponderosa pine and Douglas-fir bark.

Tannin from these sources compares favorably with quebracho tannin, substantially an Argentine monopoly, for major industrial uses such as leather manufacture and control of viscosity of oil-well drilling muds, Dr. Kurth said.

Utilization of the large volume of bark residues from lumbering and pulp wood operations would call for installation of modern bark handling equipment. This would represent a long step towards the establishment of industrial wood utilization centers, using bark, slabs, chips, sawdust and other mill wastes, laboratory officials point out.

Waxes obtained from tree-bark sources, especially Douglas-fir, can be modified for a variety of household and industrial uses. The wax is, by nature, harder than bees wax but not as hard as carnauba wax. By chemical treatment, however, certain of its properties can be made superior to those of carnauba.

Dr. Kurth first began investigating Douglas-fir bark in 1947. Since then he has also concentrated efforts on other barks, including ponderosa pine, sugar pine, lodge pole pine, Jeffrey pine, white fir, grand fir and red alder.

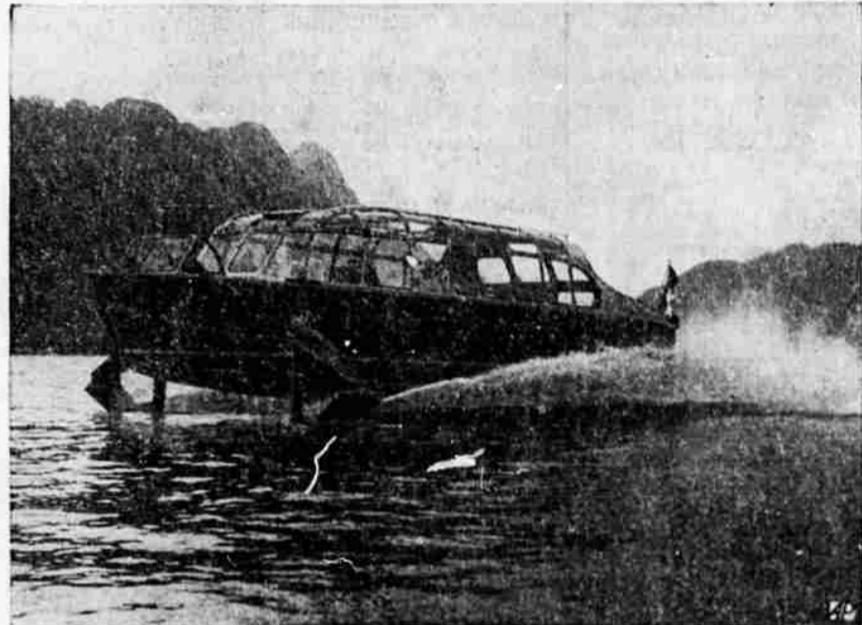
While fir and ponderosa pine bark yield products similar to those from Douglas-fir bark, Cedar bark, according to preliminary laboratory research, contain oleoresins such as are obtained from pine trees.

Chemical research at the forest laboratory, which is located on the Oregon State college campus, has unfolded new sources of valuable products for better living with each series of waste bark products.

SELFISH enough to want your business. GENEROUS enough to appreciate it!
Carter's Collection Agency
Ph. 6121 411 Main



START OF A COOKS' TOUR — Spectators line Berlin's Kurfurstendamm near Kaiser Wilhelm Memorial Church for start of junior cooks' race, a section of the annual waiters' derby. Cooks run the course with saucers full of liquid.



GETTING ABOUT IN A HURRY — Passenger craft, with hydraulically-operated "wings" which lift hull from water, churns up Lake Lucerne, Switzerland, at 50 miles an hour.

Retedale Records Set

PETERBOROUGH, N. H. — L. L. Lombard and Ray Hobson, Retedale Guernsey Farm, are the owners of three registered Guerneys that have recently completed Herd Improvement Registry production records according to a report from The American Guernsey Cattle Club.

Having been milked 730 times, Donnell Majestic's Amy, a junior 3 year-old, produced 8,170 pounds of milk and 428 pounds of butterfat.

Capella of Aldarra, a 5-year-old,

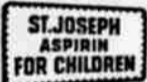
produced 10,484 pounds of milk and 539 pounds of butterfat, having been milked 730 times.

Having been milked 730 times, Land o'Dreams King's Annie, a junior 2 year-old, produced 9,434 pounds of milk and 475 pounds of butterfat.

Donnell Majestic's Amy was sired by Conquistador Melba's Majestic, that has 34 sons and daughters in the Performance Register.

CHILDREN LIKE IT!

Pure orange flavor makes this specialized aspirin so easy to take. Tablets are 1/4 adult dose. 20c



Have you tried the Free OLIVER WORK-TEST?



OLIVER WORK-TEST?

Don't miss it! See Oliver machines at work—work them yourself!

Before you buy any new machine accept our invitation to try an Oliver in your own fields first, under your working conditions. There's no obligation, of course.

Climb into the comfortable rubber spring seat of an Oliver tractor. You'll like the way it handles, the way it pulls, the convenience of its Direct Drive Power Take-Off.

Plow a few furrows with an Oliver tractor gang—make a round or two with an Oliver baler, combine, plow, or whatever tool is seasonal. It won't take you long to see for yourself how it SAVES!

That's the only way to appreciate the work-capacity, the downright efficiency of Oliver equipment, the advantages of its exclusive features.

Stop in at your earliest convenience. Name the machine you'd like to work-test—and we'll get it to you.



GARRISON EQUIPMENT COMPANY

"OLIVER" The Finest in Farm Machinery
Merrill-Lakeview Jct. Phone 7312

Forest Soils Course Slated

OREGON STATE COLLEGE—A forest soils short course, designed to acquaint foresters with the problems and current activities in the field of forest soils, will be offered for the first time at Oregon State College this fall.

Scheduled for Nov. 6 to 8, the short course will be open to all forest industry workers. It will be directed by Dr. C. T. Youngberg, scientist. Sponsors of the course are the OSC schools of forestry and agriculture and the Douglas Fir Forest soils committee, composed of representatives from federal, state, and private forestry agencies.

The short course will include work in general problems of soil and land classification; chemical, physical and biological aspects of forest soils; water shed management; and a discussion of forest soils and problems.

NEW TRAILER HOMES

Agency for SPARTAN-PONTIAC & CLIPPER NOW ON DISPLAY Balsiger Motor Co. Main at Esplanade Klamath Falls

get rid of QUACK GRASS now with DOW Sodium TCA 90%

Fall is the time to go after quack grass along roadsides, ditch banks, fence rows and in fields with Dow's proved grass killer—Dow Sodium TCA 90%. Wherever possible, its application should be combined with tillage. This gives better control of established stands of quack grass with lower dosages and at lower cost.

Spot treatment to control grass in both crop and non-crop areas can be done wherever infestation is localized and also as a follow-up after over-all application.

Ask your dealer for information and dosage recommendations.

THE DOW CHEMICAL COMPANY
SAN FRANCISCO Seattle Los Angeles



J.W. KERNS

OREG., LTD. 734 South 6th Klamath Falls, Oregon Phone 4127

Klamath Basin Distributors For Dow Chemicals... Sodium TCA In Stock at all times!!!

Red Clover Promise Seen

Although red clover seed production is relatively new for California farmers, growers who have the proper set-up have a good chance of producing a profitable crop, points out Farm Advisor, Ken Baggett, of the University of California, Tulelake office. Much of the seed produced in the state is grown under certifica-

tion and is exported to the red clover areas of adaptation in other parts of the country, where the seed is used largely for the production of forage. The nation-wide emphasis on grassland agriculture has helped increase the demand for this legume seed.

HUNTERS

Coleman Equipment Serviced by factory trained repairman SWAN LAKE MOULDING

Let 'Butch'

cut and wrap your beef and pork for your locker And we still cure your hams and bacon SMOKE HOUSE

A. G. "Butch" Zweigart Klamath Falls Phone 7060 427 Market

Phosphorus deficiencies can cause the loss of as much as 1/3 of milk production

Bigger Dairy Profits with Simplot Red Diamond



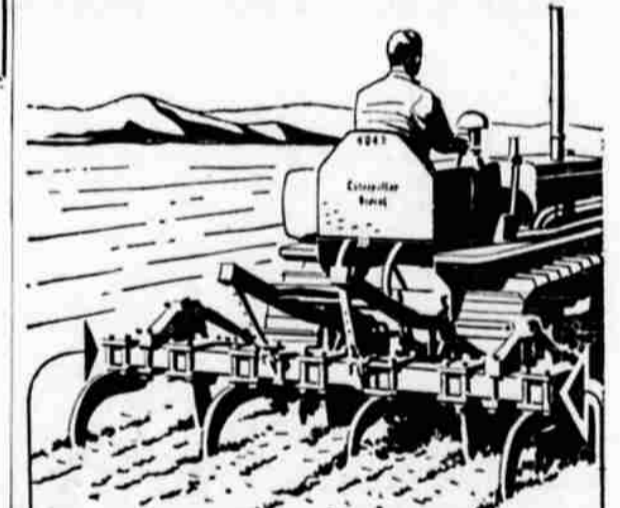
Tests prove phosphated hay and pasture produce more nourishing, palatable feed—increases milk production, make healthier animals. And superphosphate can double hay and pasture yields. Use Simplot Red Diamond Superphosphate now on pasture and alfalfa. Ask for FREE Fertilizing Folder.

YOUR SIMPLOT DEALERS

J. W. KERNS Klamath Falls SHARP GRAIN CO. Merrill STANDARD FEED STORE Klamath Falls TROY V. COOK CO. Klamath Falls

SIMPLOT SOILBUILDERS INCORPORATED

2052 Washburn Way Phone 2-1438



D4's NEW Tool Bar

Efficiency Booster!

The new "Caterpillar" Tool Bar close-couples your D4 for new efficiency and maneuver-ease; saves acres, hours, effort. The 4-position hydraulic control provides for lifting or lowering tools fast, standing still or going.

Strongest tool bar built, it's far stronger than towed-type implement frames. This direct-connect bar's use eliminates needless frames, axles, wheels and lifts; gains extra life, ease of control, and freedom from breakage.

Some of your present tools may work with the "Caterpillar" Tool Bar. And several heavy-duty tillage implement attachments are available for this carrier.

Inspect this new efficiency booster, built as only "Caterpillar" builds!

YOUR CATERPILLAR DEALER

Crater Lake Machinery Co. 1410 S. 6th Phone 2-2544

Your "CATERPILLAR" Headquarters

Your FARMALL M will be "rarin' to go!"



with our IH 5-STAR PISTON and SLEEVE SPECIAL

Give your tractor more power... save fuel and oil... add extra years of top performance. Let us install IH factory-matched pistons and sleeves. Made of a close-grained, extremely hard alloy, they will work long hours on heavy loads. They are ground to a precision fit and mirror-like finish for better compression and greater economy. They are a good investment NOW.

ASK FOR an Estimate



CALL US TODAY!

J.W. KERNS

OREG., LTD. 734 South 6th Klamath Falls, Oregon Phone 4197