

U.S. CALLS OFF LEASE PROBE

In The NEWS

By FRANK JENKINS

I suppose it's impossible to run Presidential campaigns without "swings around the country." But they have their dangers.

Spokane is a present example. Governor Stevenson is swinging around the Pacific Northwest. He didn't (undoubtedly because he couldn't make it fit into his time schedule) include Spokane among his stops.

The political dispatches this morning include this sentence: "Spokane Democrats say they're not going to take lying down Democratic Nominee Stevenson's refusal to visit Spokane."

They don't mean, of course, that they're going to campaign against him or even vote against him. They're just letting it be known that their feelings are hurt. I presume they've also lost a little respect for Governor Stevenson's perspicacity. If he were as smart as he should be, how could he refuse to make one of his more important speeches in a city of Spokane's unquestioned importance?

Both Ike and Adlai will have to turn down eager requests from a lot of cities and towns. Those of us who will be among the rejects won't grab knife and tomahawk and go after the nominees' scalps, but like Spokane we'll feel let down.

Kasson, Minnesota, is the whistle stop that hit the jackpot. A national plowing contest is being held there this week, and a month or such a matter ago it occurred to somebody that it would be a smart idea to invite Ike and Adlai to speak there.

Why not? The farmer vote is admittedly important in national elections these days, and where get at the grassroots farm vote than at a national plowing contest. Besides, it would be good chamber of commerce stuff—a sure-fire way to put Kasson on the map.

So it was done. The invitations were issued.

And—
Wonder of wonders—
Both Adlai and Ike accepted!

You've heard, of course, of these individuals who win the big radio give-away jackpots. There is for them a moment of vast, illimitable glory when over a national hook-up they hear that Dame Fortune has turned her cornucopia upside down over them and they are buried in opulence.

The moment of delicious joy that follows is fleeting. Trouble follows on horseback. First there is the old gentleman in the high hat, the shiny pants and the chin whiskers. He thrusts his hand deeply into the wealth that has come showering down, and when he removes it the pile is far, far smaller than it was.

Then come the people with things to sell. They come in such numbers that they trample down all the grass in the front yard and even the flowers in the borders along the fence.

And so on.

Well, it was that-way in Kasson.

They worried themselves into a tizzy when they heard both Ike and Adlai were coming, and finally in desperation, they wired Adlai he'd better not come. He didn't like it, and the whole Democratic party didn't like it. Confronted by the sharp horns of the dilemma, the Kasson folks reconsidered and told Adlai to come on.

Now they're worse worried than ever. What if Ike and Adlai should meet FACE TO FACE on the streets of Kasson! Wouldn't that be TURBULENCE! At the moment this is written they're still stewing over it. The dispatches hint strongly that as the good people of Kasson discuss that potential calamity their voices are heavy with foreboding.

Personally, I think they're making mountains out of molehills. What if Ike and Adlai SHOULD meet head-on? They're both cultured cosmopolitans. They've been around. I rather imagine they'd grin and shake hands and make a wisecrack or so and that would be the end of it.

But when I had to shut this off to make my deadline the good citizens of Kasson, the town that hit the jackpot, the village that is the envy of all other villages, were still silvering with apprehension.

Aren't people funny?

Ike Backs Farm Price Supports

By DON WHITEHEAD

KASSON (AP) DODGE CENTER, Minn., Sept. 6 (AP)— Dwight D. Eisenhower made his bid for the important farm vote today with a plan which he said would guarantee present price supports for another two years and then would lead to farm crop support including higher prices for the farmer.

Eisenhower said the farmers' return must be boosted from the present 90 per cent of parity to a full 100 per cent—but in ways that would "minimize government control and protect farmers' independence."

He called for a wider range of "greater protection" for producers of perishable products such as meat, milk, eggs, fruits and vegetables.

The GOP presidential nominee outlined what he called a "sound, farmer-run plan" while charging that the Democratic administration had tried to make the American farmer a "political captive."

"I firmly believe that agriculture is entitled to a fair, full share of the national income," Eisenhower said, "and a fair share is not merely 90 per cent of parity—but full parity."

(Parity represents a fair return for the farmer in what he receives for his crop in relation to the things he must buy.)

Eisenhower unveiled his new farm plan in a speech prepared for delivery at the national plowing contest here—only a short time before Democratic presidential nominee Adlai Stevenson was due to discuss his farm program.

Eisenhower's speech was first on the program and it was an open challenge to the Democrats for a farm vote which in 1948 was credited by some with giving President Truman his surprise victory.

The basic farm commodities now under price supports are wheat, corn, rice, cotton, tobacco and peanuts. Eisenhower said supports should be extended to such crops as oats, barley, rye and soy beans.

PROTECTION
He said some way must be found to give greater protection to the producers of perishable products such as meat, milk, eggs, fruits and vegetables—which are not now under price supports.

Then he called for expanded farm co-operatives; up-to-date farm roads; and "developing rural electrification and telephone service."

Eisenhower spread his farm proposals to public view for the first time after making these moves in Chicago yesterday.

1. He indicated strongly he might possibly name a Negro to the Cabinet or "to any place" if he found one with "the qualifications needed to serve the United States well."

2. He held out an olive branch to Sen. Robert A. Taft—whom he defeated for the GOP nomination—by saying: "I'll try to draw him onto my team not only as a consultant but as a man to lead a very important section of the fight."

These statements came during a pep rally of Republican leaders in which Eisenhower told them: "If we can get common honesty in government, I believe we can come close to balancing the budget without ever once reducing necessary expenses for the armed forces."

POSITIVE PROGRAM
The general continued his campaign in this farm state by promising the Republican party "is going forward with positive, aggressive, farmer-run farm programs."

And he added: "There's going to be a spring house cleaning of the unscrupulous leadership that would use farm programs for political purposes. There will be more of this business of using federal power to extort the farmers' vote."

Eisenhower went on to tell farmers: "Our goal will be sound, farmer-run programs that safeguard agriculture—but do not regiment you do not put the federal government in charge of your farms. . . ."

FIRE DESTROYS PLANT
MONMOUTH, Ill. (AP)— Fire, Saturday destroyed the four-acre regional offices and warehouse of Gable-Stegman, Inc. Company officers said the loss would run to \$1,500,000.

Herald News

Price Five Cents—16 Pages KLAMATH TRIBUNE REGON, SATURDAY, SEPTEMBER 6, 1952 Telephone 8111 No. 2914

3 Die In Auto-Truck Crash

11 County Fatalities In 18 Days

An automobile wreck just south of the Klamath River Bridge on US 97 early this morning killed three men and injured another, bringing Klamath County's bloody highway record to 11 persons dead in the last 18 days.

For the year the county total is 18.

Victims of this morning's tragedy were Lowell Eugene Wilson, 43, of Dorris; Charles Herbert (Bill) Sims, 51, of Project City, Calif., and Albert H. Jones, 46, of Cottonwood, Calif.

The injured man, in Klamath Valley Hospital, is Keith E. Peck, 33, of Irvington, Calif. He is not seriously hurt, having head lacerations.

The men were northbound on Dorris in Peck's 1952 Plymouth when the car rammed into the back end of a flatbed truck owned by the Morrison-Knudsen Construction Company and driven by William Chester Farrell 47 of Fairfield, Calif.

The accident occurred about 1:30 a.m.

ANOTHER WRECK
Another automobile mishap had occurred at the same spot a few minutes before. A 1942 Buick coach driven by Carl Clinton Van Fleet, 620 N. 12th failed to stop coming out Sutton Road and had plunged on across the highway into a ditch on the west side. Van Fleet said his brakes didn't hold. He wasn't hurt.

State Police and a wrecker arrived at the scene and set out flares to warn other traffic while Van Fleet's car was being hauled out.

The driver of the truck Farrell coming north saw the flares and braked, but the car was going just six or seven miles an hour.

But the other car apparently didn't slow down until it was well into the zone outlined by the flares then skidded and crashed into the back of the truck. The impact was so great that the car and the truck bed tore through.

RIGHT SIDE
Wilson was sitting on the right side in front and Sims on the right side in back. Wilson was killed outright; Sims was dead on arrival at Klamath Valley Hospital before 2 a.m.

Kaler's ambulance brought Jones Peck and Sims to the hospital then took Sims' body to Ward's Funeral Home. Wilson's body also was taken to Ward's.

Jones was conscious and talkative when brought to the hospital, but died several hours later. His right arm was badly fractured and he is believed to have had a skull fracture.

Wilson was a long time resident of the Klamath area and worked as a bartender at the Star Inn, Dorris. A brother, Woody Wilson, operates the 40 Club at Dorris. He is survived by the widow, Peggy; his mother, Mrs. Pearl Burke, Klamath Falls, and a sister in Los Angeles.

Peck is a superintendent of the Moore Dry Kila Company, Portland, and is installing a dry kiln at the Associated Lumber and Box Company of Dorris. Sims and Jones were working for him. Sims was a pipefitter and before coming to the Dorris job had worked at Project City and Reno.



ANOTHER EARLY MORNING auto accident, this one just a few miles south of Klamath Falls, took the lives of three men today. This car, shown being towed away by Jim and Art's wrecker, smashed into the rear end of a flat bed truck. The right side of the car was sheared away.

350 Killed In India Storm

NEW DELHI (AP)— News-

papers reported Saturday at least 350 pilgrims perished and many others are missing in a fierce storm that caught them on a trek toward the sacred seat of the Hindu gods on the high, glacial slopes of the Himalayas.

A spokesman for the Indian government said he doubted if an accurate count of the dead was possible, because the pilgrims were scattered over many miles of mountain trails when the post-monsoon snows overtook them.

They were struggling toward the headwater region of the holy Ganges river for the annual Muni festival, which draws thousands of pilgrims.

The storm whipped across the highest passes—18,000 feet above sea level—at Shinarajot, 65 miles from Chamba in Himachal Pradesh state.

Survivors were quoted by New Delhi's papers as saying many sought refuge in caves. Their fate was unknown. Others died of exhaustion on the return journey to the plains.

Indian officials seeking confirmation of the reported death toll were handicapped by the fact that the surviving pilgrims were scattered in many small bands.

The only sources for news were the survivors or rescuers workers. Since the remote highlands are beyond the reaches of motor highways and telegraph service.

Stubble Fire Causes Alert

Plumes of smoke blossomed out over the Tule Lake area this morning and had lookouts peering anxiously at the source, but Tulelake Dist. Ranger George Fischer reported the smoke was from burning stubblefields.

Barley harvest is well along, and stubblefields are becoming more numerous as it progresses. Meanwhile, RIFPA crews flagged down a fire in the Foster Butte area, apparently started by a sheep herder. Fire guards reported a band of sheep had moved through the area about a day before they located the blaze yesterday afternoon.

Another fire, this one a lightning strike, necessitated a "guide in" via radio from a lookout before it could be located. It was but 15 feet in diameter, and put up very little smoke.

An early morning lightning storm today set several small blazes in the Warner Mountain area east of here, but nothing serious was reported.

Pel Ticket Sales Zoom

Season tickets for five Pelican home football games were selling fast today at the Chamber of Commerce and conservative guesses put the first-day sale down at 400.

Some 300 were gone an hour after the C of C offices opened this morning. In the neighborhood of 100 fans were in line when the doors opened.

Reserved tickets to the five home games cost \$7.50, not \$8 as previously reported in a Herald and News Ad.

Advance sale of reserved seats close at noon the day of the Pel's first game, against Grant here Sept. 13. Individual reserved seat tickets can be purchased the night of the game.

Prices Show Slight Drop

WASHINGTON (AP)—Lower prices for meat, eggs, fresh and dried vegetables, cows, hogs and live poultry caused a two-tenths of 1 per cent drop in wholesale prices during the week ended Sept. 2.

The Bureau of Labor Statistics, announcing the decline yesterday, said increases were reported in cheese, coffee, flour, cotton, grains, steers and fresh fruits, but they were not enough to offset the declines.

The bureau said its index of Sept. 2 was 111.8 per cent of the 1947-49 average.

Death Claims Stage Star

NEW YORK (AP)—Gertrude Lawrence, whose ability to do almost anything on the stage made her the toast of two continents, died in New York hospital Saturday at the age of 51.

Miss Lawrence, a top star for more than a quarter of a century, left her Broadway role in "The King and I" on Aug. 16 for treatment of yellow jaundice.

However, a family associate said the jaundice was not the cause of her death.

He said an autopsy would be performed in an effort to determine the cause.

She went to the hospital only at the insistence of her husband, Richard Aldrich, after going through her performances painfully for four days.

"She wouldn't give in," said Aldrich, a producer. He and two close friends—Fanny and David Holtzman—were at her bedside when she died.

The English-born actress' last appearance in the Rodgers-Hammerstein musical, based on the book "Anna and the King of Siam," was at the matinee of Aug. 16.

Saturday's newspaper advertisements still billed her as star of "The King and I" although her role is being taken by Constance Carpenter.

11 Missing From Tanker

CHARLESTON, S. C. (AP)—A Honduran tanker with 30 men aboard broke up Saturday in the storm-tossed Atlantic 130 miles southeast of here.

Eleven men were missing, while two others refused to leave the vessel's floating wreckage.

The Coast Guard said the captain of the 5,000-ton ship—the Foundation Star—and 10 men were in a missing lifeboat.

Planes and surface craft of the Coast Guard and Navy sped to the scene and combed the turbulent sea, churned up by the season's second big hurricane passing a few hundred miles to the east.

The 17 rescued men were picked up by a Norwegian ship, the Mt. which was near the Foundation Star when she cracked in two.

School Entries Show Decline

There are 26 fewer students in Klamath school systems this year than there were last, according to figures released by the city and county school offices here.

Total enrollment in all schools in the county this year—including city schools—is 7841 students as compared with 7867 last year.

Despite the decrease, school officials seemed confident that student enrollments would increase as school went on. Especially in the county system there appeared to be quite a number of students who were not yet registered yesterday because of farming.

Broken down figures showed county schools have 32 fewer students this year, with 4339 as compared to 4371 in 1951; city elementary schools have 10 fewer students, with 2289 in 1952 as compared with 2299 last.

Klamath Union High School has 1213 students enrolled this year, 16 more than the 1197 registered at the same time last year.

Shasta School recorded the greatest increase among county schools with the opening of a pair of new classrooms. Its enrollment is 45 higher than last year's 287.

Gilchrist upped its totals from 228 to 270. Meanwhile Bly's enrollment fell off 30 to 180. Sprague River fell from 39 students to 35 and Altamont Junior High fell from 500 to 457 students.

County figures include both high and grade school totals in each community where they are together.

Raymond's Camp, which last year schooled 17 youngsters, didn't open school sessions this year.

Youth Held In Shooting

ROSEBURG (AP)—A second youth was arrested here Friday in the attempted holdup of a soldier that ended in a gun battle on the Pacific Highway south of Eugene.

Held under \$1500 bail on a charge of assault with intent to rob was Leo K. Fuchs, 18, Plevina, Mont.

Fuchs was arrested after he reported his car had been stolen.

Under police guard in a Cottage Grove Hospital was James Faust, 17, Baker, Mont. who was wounded in the neck in the gun fight with the soldier, Cpl. Harold Fitch, Camp Stoneman, Calif.

Fitch and his wife were sleeping in their car beside the highway early Friday when a youth awakened them. The soldier told police.

The youth, holding a gun, demanded money. But ducked behind the Fitch car when another auto passed, the corporal said that gave him time to unlimber his own gun and in an exchange of shots, Faust was wounded.

Another youth in a car bearing Montana license plates sped away. Fitch later identified him as Fuchs, Sheriff's Deputy W. J. Worral became suspicious when Fuchs appeared in Roseburg Friday and reported his car stolen by two companions who, he said went off and left him in Eugene.

Bridges, native Australian, was convicted of swearing falsely at his naturalization hearing in 1943 that he wasn't a Communist.

Extension Gives Farmers Harvest Time for Spuds

The case of the "hot potatoes" was settled late yesterday by a Reclamation Bureau decision to give farmers until Nov. 1 to harvest potatoes on land on which the bureau has cancelled leases.

On Sept. 2, when the bureau notified 30 war veterans their leases were being cancelled, the ouster time was set for midnight, Sept. 12.

That would have meant the operators of the leases would not have time for ripening and harvesting of hundreds of thousand dollars worth of potatoes. But the farmers said they thought they could have the harvest complete by about mid-October and moving the lease cancellation date up to Nov. 1 appears to assure the farmers plenty of time.

Spuds Saved, Vet Whoops

By WALLACE MYERS

News that the Tule lease cancellation date had been moved up to Nov. 1 brought whoops of joy from J. R. (Bob) Dalton last night.

Earlier in the day, Dalton, a young Merrill farmer and war veteran, had told this reporter how he innocently got caught up in the web of cancellations and was threatened with being completely wiped out by loss of the potatoes on his lease.

Dalton is married and the father of five children ranging in age from two to seven years. He has been working on the Bob Adams ranch at Merrill. In December of last year Dalton was awarded one of the 95 leases executed by the Reclamation Bureau.

Dalton's lease was on a plot of 76 acres.

"I just didn't have enough money to farm the land myself," said Dalton, "so I made a deal with Bob Adams, my boss. I honestly thought it was all right to make the kind of deal I did. I've never done a dishonest thing in my life and I sure didn't think I was being crooked in dealing with Adams."

Dalton explained that under the agreement with Adams, they were to use Adams' farm equipment and Adams was to stand a major portion of the expense of farming the plot. Profits were to be split with Adams taking 75 per cent and Dalton 25.

"I'm trying to get ahead and make a good home for my wife and the children," said Dalton. "I figured my share of the 18 acres of potatoes we planted on my ground would bring me enough so that I could afford to farm the plot all by myself next year. I put everything my wife and I could scrape together in that ground . . . mortgaged my car and 17 calves I've managed to get. I've worked hard on the land myself. I did a lot of ditching, helped with the planting and have been doing a lot of the irrigation work on those spuds. If I lose the potatoes, I'm wiped out and it will take years and years for me to get out of debt for the money I've put in that land."

At the time, Dalton told his story the cancellation extension had not been announced and Dalton was seeking advice on how he might save his potatoes.

"I'll take my wife and youngsters and go down there and camp on the ground if it will do any good," he said.

Dalton says his lease was undoubtedly cancelled because of his

The 30 cancelled leases were included in 95 leases for plots of about 80 acres each. The leases were signed in December of last year for a one-year period, with options for renewal for four years.

When he announced the 30 cancellations, Boke said the rest of the 95 leases would be investigated. Twenty-six of the remaining lessees were notified to appear at a hearing here to begin Monday. But yesterday, in announcing the Nov. 1 extension, Boke said Monday probe had been called off.

Boke also said that the 30 men whose leases had been cancelled would have until Oct. 8 to file appeals.

Until the Nov. 1 cancellation extension was announced yesterday it appeared operators of the leases might lose potatoes valued conservatively at more than a million and a half dollars.

Boke says revelations of the lease probe will mean a tightening of the bureau's lease policy. Apparently, future lease applicants will be a great deal more closely screened.

The leases cover 7,232 acres of land which the bureau says is not suitable for homesteading since it is subject to being flooded in unusually wet years.

There is still a possibility the bureau will institute criminal action against persons involved in the lease violation charges. Boke said yesterday evidence was being studied with such action in mind.

New Butte Valley Well

Another giant well has been brought in down the semi-arid Butte Valley, this one the Paul Robinson place south of Macdoel.

A reported testing of 4000-gallons per minute took place yesterday, and further testing was underway this morning.

The well is close to the Criss Brothers well which tested out at well over the 4000-gallon rate two years ago. Hitchcock-Reed company equipment was used in the testing.

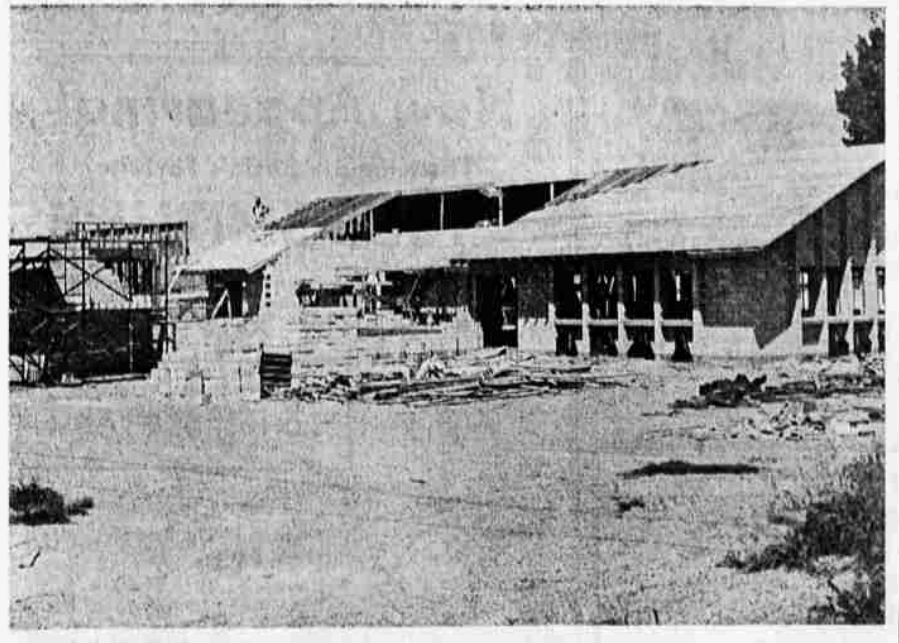
Weather

FORECAST—Klamath Falls and vicinity and Northern California: Mostly sunny Sunday, with a few wide-scattered showers over the mountains. Low Saturday night 42, High Sunday 78.

High temp yesterday 75
Low last night 49
Precip yesterday 0
Since Oct. 1 17.39
Same period last year 14.84



FROM HENLEY This morning came Mr. and Mrs. Isaac Thomas and their son, Isaac Jr.



WORK IS PROGRESSING rapidly on the new Mt. Laki Community church on the Merrill highway and the Midland road. The hollow tile and frame building is expected to be completed early late fall. Howard Burkhardt is the contractor.