

County PMA Elections Come Up in September

Community PMA elections will be held in each of Klamath County's four farm communities, Sept. 2 to Sept. 12. Chairman Wm. J. Burnett, of the county PMA committee announced today.

At these elections, farmers in each community will vote for three farmers to serve on the community committee, for a delegate to the county convention to elect the county PMA committee for 1953, and for alternates. Voting will be by mail. In general, any farmer is eligible to vote if he is owner, operator, tenant, or sharecropper, is

participating or is carrying out practices in accord with programs administered by the county PMA committee.

Chairman Burnett emphasized that the effectiveness of Agricultural Conservation Program operations and of price support and marketing programs will depend a great deal on the community committees who are voted in at these elections.

The concentration of agricultural conservation program operations in 1953 on the problems of individual farms adds to the need for able committees. Committees will be expected to help each farmer in determining the conservation needs on his farm and in making the most effective use of vices in carrying out most needed ACP assistance and available ser-pices.

Since this program has to do with the protection and improvement of the soil and conservation of water on the farms of Klamath county, community committees are in a key position in the fight for continued production.

The chairman urges farmers in each community in Klamath county to look over the field carefully and make sure that farmers are elected who are best qualified and who will have the time to devote to the job.

ALY IN PARIS

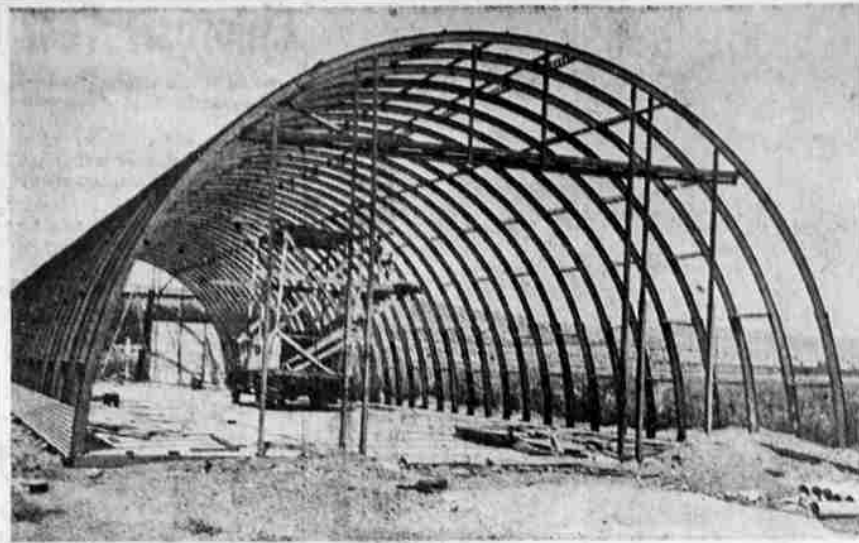
PARIS (AP) — Prince Aly Khan arrived by plane from New York Tuesday and indicated he would leave shortly for Deauville.

MacFadden To Parachute

NEW YORK (AP) — Bernarr MacFadden, publisher and physical culturist, is flying to Paris to make a parachute jump into the Seine River to celebrate his 44th birthday.

MacFadden, who was 84 Aug. 16, left here by plane yesterday. For the jump he took along red underwear, a life preserver and shoes with two-inch sponge soles.

He told newsmen at Idlewild Airport that he would make the jump — his third in three years — to prove that "getting old is a bad habit."



SPUD CELLAR—Going up on the L. Lewis Kandra place near Malin is this quonset-type building which is to be a potato cellar. The building is to have built-in insulation and other features when completed. Warren Noggle is building the structure.

Nestucca Wins Judging Test

CANBY (AP) — A Future Farmers of American team from Nestucca won the FFA livestock judging contest at the Clackamas County fair which opened here Tuesday.

A team from Scappoose was second followed by Forest Grove.

Banks, Dayton, North Marion, Oregon City, Canby and Albany.

Livestock judging was the main event on Wednesday's program.

The smartest sportswear in town at DREWS!

Lamb Brooder Plans Drawn Up And Available

A practical lamb brooder and ewe feeder has been designed at the Oregon State college agricultural experiment station.

The new innovation in lambing equipment is expected to save time and labor for the farmer as well as provide better care for the ewe and her lamb, according to Dr. A.C. Warrick of the OSG animal husbandry department.

The brooder and ewe feeder can be constructed in sections. Each unit will water and feed four ewes and provide heating for their lambs. It is constructed of one-inch lumber and employs light bulbs as the source of heat.

One particular advantage of the design is that it helps in better management and sanitation by eliminating the need for buckets and hay scattered around the lambing pen. Feeding is done from an alley running between halves of the four-pen unit. Watering is done

by means of a pan located so all four ewes can reach it.

The brooder part is desirable because it helps in early lambing where weather is a factor in determining when farmers have their ewes lamb. Early lambing, of course, means being able to put spring lambs on the market in time to get higher prices for them.

The OSG pens, now in use at the college sheep barn, are easily transported and easy to construct.

Plans have been drawn up by OSG agricultural engineers and are available from the OSG plan service for 60 cents.

HOTELS
OSBURN * HOLLAND
EUGENE, ORE MEDFORD
Thoroughly Modern
Mr. and Mrs. J. E. Earley
and Joe Earley
Proprietors

VERTI-BLIND . . .
NEW FOUR-WAY WINDOW DECORATION
• Blind • shade • curtain • drapey

- Takes the place of all other window coverings by DuPont
- Wide selection of beautiful decorator colors
- Protects furnishings • Washable, fade-free from direct sunlight, shade dust

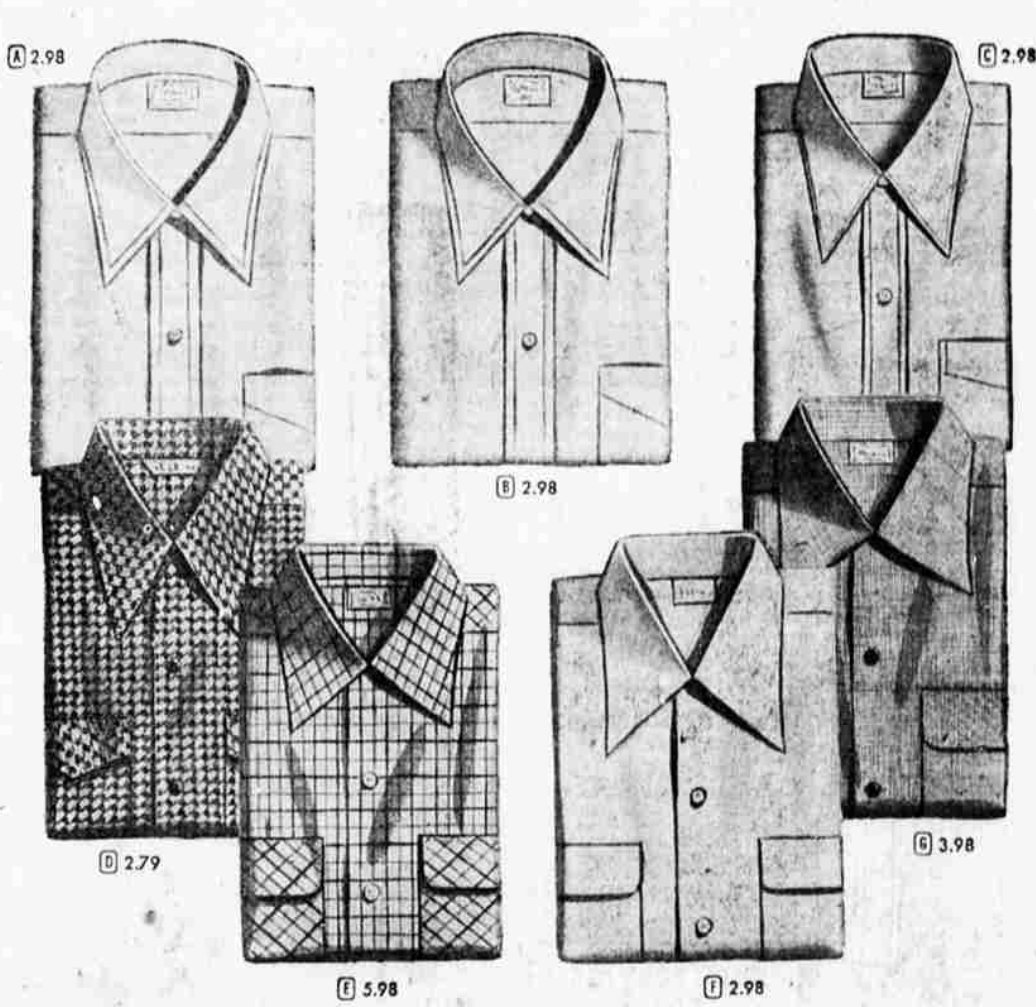
THE ONLY VERTICAL BLIND THAT ROLLS UP AND DOWN

CALHOUN'S FLOOR COVERINGS
357 E. Main

The KIRBY Co.
Call 2-0131
No. 3 Lytton

Ari-Metal Office Equipment Costs No More—Own The Best. Voight's Pioneer Office Supply, 629 Main.

9th and Pine *Montgomery Ward* Phone 3188

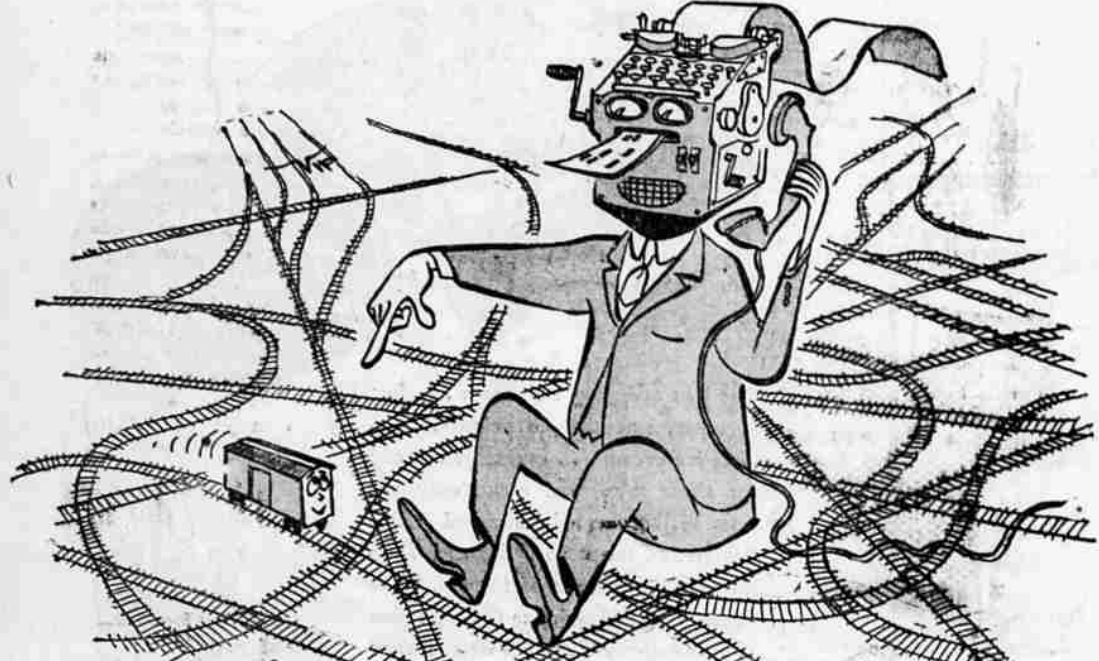


MEN'S FALL SHIRTS AND PAJAMAS

Stock up Today on Top-value Men's Needs

- DOUBLE-WEAR COLLAR**
A Perma-Fit collar will not wilt. High-count white broadcloth. Sanforized. Sizes 14-17. **2.98**
- SAVE—FORMERLY 3.98**
C Quick-drying Dress Shirt of 12% nylon, lustrous rayon. Color choice. Sizes 14 to 17. **2.98**
- PINWALE CORDUROY**
E Gay plaids, popular checks. Rayon-satin yoke. Hand-washable. Smart colors. All sizes. **5.98**
- SMART SPORT SHIRTS**
C Cut for casual comfort in plaids, checks, bold colors. Easily washable. Long sleeves. **3.98**
- SANFORIZED PAJAMAS**
J Handsome solid colors and fancies. Comfortable non-binding elastic waistband. All sizes. **2.98**
- WOVEN BROADCLOTH**
B With Perma-Fit collar for day-long neatness. Blue, tan, gray. Sanforized. Sizes 14-17. **2.98**
- SANFORIZED FLANNEL**
D Colorful fall patterns in warm, durable cotton flannel. Long sleeves. Sizes 14 to 17. **2.98**
- SMOOTH RAYON POPLIN**
F Comfortable, smartly styled. Crease-resistant, hand-washable. Color choice. All sizes. **2.98**
- WASHABLE PLISSE**
H Easy-to-wash Pajamas need no ironing. Roomy coat, middy styles. Many colors, all sizes. **3.49**
- SMOOTH BROADCLOTH**
K Full-cut for comfort in colorful checks, plaids and solids. Sanforized. Sizes A, B, C and D. **2.98**

ASK ABOUT WARDS CONVENIENT MONTHLY PAYMENT PLAN



Our freight cars can't escape!

Shippers and receivers of freight frequently need to know where their cars of freight are while en route. They may wish to divert cars to another market. They may have deals on for the cars' contents involving close delivery dates. The faster we can give them this information the better they like it.

For years Southern Pacific has served its shippers with a car-reporting system that could tell just about where each freight car is located among the 80,000 or so freight cars moving over our 13,500 miles of lines every day.

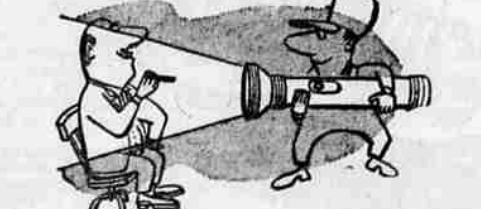
That system, while reasonably fast, did take a little time. So, since time is at a premium, Southern Pacific has developed something new to give you a still faster information service.

This new super-fast freight car-reporting system is a business machine-tape-teletype setup. It is now operating at terminal and division point "nerve centers," and is being rapidly extended to other points over the country.

the nation) that car's record flashes instantly. The setup also gives a "passing report," showing the progress of each car as it moves over the railroad.

By means of this new "electronic car reporter" system, our S. P. freight men all over the U.S. know each morning (and can advise shippers and receivers) the location of vital carloads going to production and defense; to you, the consumer; to that manufacturer whose assembly-line depends on our efficient service; to that military unit with which your son or brother may be serving in Korea.

Fast transportation is important to our shippers, and we provide it. But equally important in today's high-speed business is quick information. We provide this, too. Through expenditure of large sums of money and by taking advantage of the latest developments in communication equipment and methods, as well as the latest business machines and accounting methods, Southern Pacific steps ahead once more, providing a superior information service for its customers, matching the improvements being made in the actual transportation service in which we are engaged.



With the speed of light—186,000 miles per second—this setup flashes a record of moving cars to points all over our lines and to Eastern cities, thus tracing and reporting each carload as it goes along.

At these centers, a card is punched for each freight car in every freight train. This card feeds into a machine that "thinks" (it can cut, shuffle, sort and classify thousands of carloads, numerically, by destinations, and in many other ways, in mere seconds). The punch-holes actuate a tape, the tape sets batteries of teletypes clicking—and to cities on its route (and nightly by our own nation-wide telegraph network to our S. P. freight offices all over



SOUTHERN PACIFIC COMPANY, D. J. RUSSELL, President