

MARKETS and FINANCE

NEW YORK (AP) — Selling pressure on the railroads Monday tripped the stock market into a sharp fall.

Losses were quite wide—going to between 4 and 5 points at the outside—with the bulk of the decline extending from fractions to one and a half points.

A considerable portion of the fall represented mark-downs unaccompanied by sizable selling. Volume came only to an estimated million shares.

Motors and steels also were lower and showed activity second only to the railroads.

By The Associated Press

Table listing various stocks and their prices, including Allied Chemical, Allis Chalmers, American Airlines, etc.

LIVESTOCK

PORTLAND (USDA) — Cattle salable 1800; market rather uneven; steers grading good and above strong; others weaker; few loads feeder type steers unsold.

On The Record

ZUPAN—Born to Mr. and Mrs. Jack Zupan, Klamath Falls, Aug. 17, 1952, a girl. Weight: 6 pounds 6 1/2 ounces.

Weatherman Sees No Oregon Rains

PORTLAND (AP) — The Weather Bureau forecast little in the way of rain for Oregon. A few widely scattered showers in the eastern part of the state and a few thunder-showers in the mountains of the west, replaced an earlier forecast of rain.

People DO TOO read small space ads — you are!

CHICAGO (AP) — Grains drifted lower throughout the session on the board of trade Monday, winding up with losses which extended to a couple of cents in soybeans.

Wheat and corn sank from the start. Soybeans and oats held firm early, only to join the other cereals later.

Bumper crop prospects, particularly for wheat in Canada, stimulated the mild selling pressure.

Wheat closed 1/2 cent lower, September \$2.33 1/2, corn 1/2 cent lower, September \$1.78 1/2, oats 1/2 cent lower, September \$1.34 1/2.

GRAINS

Open High Low Close
Sep 2.33 2.33 2.33 2.33 1/2
Dec 2.40 2.40 2.39 2.39 1/2
Mar 2.45 2.45 2.44 2.45
May 2.45 2.45 2.45 2.45
Jul 2.41 2.41 2.39 2.40 1/2

PORTLAND (AP) — Coarse grains, 15-day shipments, bulk, coast delivery:

Oats No. 2, 38-lb white, 68.00; Barley, No. 2, 45-lb B. W., 69.00.

Wheat (BID) to arrive market, basis No. 1 bulk, delivered Coast:

Soft White, 2.38; Soft White (excluding Rice), 2.38; White hub 2.38.

Hard Red Winter: Ordinary, 2.41; 10 per cent, 2.41; 11 per cent, 2.41; 12 per cent, 2.41.

Hard White: Baart: Ordinary, 2.42; 10 per cent, 2.42; 11 per cent, 2.42; 12 per cent, 2.46.

Car receipts: wheat, 139; barley, 26; flour, 11; corn, 8; oats, 2; mill feed, 11.

LIVESTOCK

SOUTH SAN FRANCISCO (USDA) — Cattle 800; receipts included about dozen or so loads of steers; load of heifers, balance mainly cows; early trade slow, weak to 50c lower on feeder steers, steady on cows; 5 loads good 800-1050 lb feeder steers 27.50-29.00; small steers 27.50; culler and cutter cows 14.00-17.00; odd head utility 17.50-20.00.

Calves 75; market slow, mostly stock calves; no early sales.

Hogs 200; butchers steady; choice No. 1 and No. 2 190-240 lb butchers 54.75; small lot 170 lbs 23.75; no early sales; feeder pigs steady, few good-choice 25.00-28.00.

Sheep 3,000; market not established.

POTATOES

CHICAGO (AP) — Potatoes: Arrivals 216, on track 223; 40 all U.S. shipments Friday 536, Saturday 333, and Sunday 7; supplies light, demand fair; market slightly weaker.

Idaho-Oregon Long White \$8.50; Russets \$6.25-40; Iowa Cobblers \$5.00; North Dakota Warbas \$5.25; Washington Long Whites \$6.70; Russets \$6.35-50; Wisconsin Pontiacs \$5.00-60.

MUNICIPAL COURT

Leslie Stanley, drunk, fine, \$15 or 7 1/2 days.
Felipe Mora, drunk, fine, \$15 or 7 1/2 days.
Armando Lopez, drunk, fine, \$20 or 10 days.
Alva Billings, no vehicle license, forfeit \$5 bail.

DISTRICT COURT

Robert Pemberton McSwain, overload, fine, \$20.
Monte Clifton Knout, overload, fine, \$20.
Daniel A. Gilbert, overload, fine, \$20.
Leo Tommy Jackson, drunk in private place, sentence, 15 days and \$50.

Obituary

Baby Grain, the infant son of Mr. and Mrs. Delford Grain, El Cerrito, Calif., died in Albany, Calif., Aug. 14, 1952.

Pontiac Sedan Reported Stolen

A 1952 Pontiac sedan was reported stolen from the 1000 block on East Main sometime early last night.

WEIGHT LIFTER

BLOOMINGTON, Ind. (AP) — The American Olympic team might have fared even better in the weight lifting classes last summer if Bloomington police had caught a certain thief.

Fiery, Smarting Itch of Common Skin Rash

Don't stand such torment another hour! Just smear Reinalin Ointment on your irritated skin at once. See how quickly its medically proven ingredients in lanolin bring blissful, long-lasting relief.

HOTEL GEARHART

RELAX, enjoy yourself at Oregon's finest coast resort hotel. Swimming, sunbake, golf, ride or just loaf by day. Sleep soundly to the song of the surf at night.

WRITE, WIRE OR PHONE FOR RESERVATIONS

Elder Files For Judge

Robert M. Elder, 802 Mitchell, who resigned last week as an investigator for the Oregon Liquor Control Commission, filed this morning as a candidate for Klamath Falls police judge, becoming the fourth man out for that job.

Just a short time before Elder paid his filing fee at City Hall, Frank Blackmer, who is now serving as a police judge by appointment, completed his filing by petition.

The two men who became candidates for the office earlier are Wilbur (Red) Whitcomb and Ouis Metsker.

Elder served several months as police judge up until last spring when he resigned to again take up work he had formerly done for the Liquor Commission. He was serving then by appointment, replacing the late Judge Leigh Ackerman.

Blackmer was appointed to replace Elder and now they, plus the other two men, are going to compete for the job.

The position pays at present \$225 a month, but a measure is on the Nov. 4 ballot to raise that salary to \$275 a month. The job is one of the most important at City Hall, and is belied by its name.

Actually, the police judge duties of presiding over Municipal court are minor. The judge also is in effect city clerk, responsible for front-office bookwork as well as money-handling.

As of noon today there were no candidates for mayor, but there probably will be at least a couple before the 5 p. m. Wednesday filing deadline. Maybe more.

Paul Landry, insurance man, and Al Conroy, railroader, both former members of the City Council, are expected to get into the race.

Weather

By The Associated Press
24 hours to 4:30 a. m. Monday:
Mar. Min. Precip.
Baker 7 41 --
Eugene 70 51 --
La Grande 86 57 --
Lakeview 82 47 --
Medford 30 46 --
Ontario 65 51 --
Portland (airpt.) 74 59 --
Roseburg 73 52 --
Salem 77 37 --

Club Schedules Flower Show

The annual fall flower show sponsored by the Klamath Falls Garden Club is scheduled for Aug. 25 at the city library auditorium. Hours will be 2 p. m. to 5 p. m.

On The Record

SCHRIEBER—Born to Mr. and Mrs. A. Schriber, 2015 Gettle, at Klamath Valley Hospital Aug. 16, 1952, a girl. Weight: 11 ounces.

Obituary

Baby Grain, the infant son of Mr. and Mrs. Delford Grain, El Cerrito, Calif., died in Albany, Calif., Aug. 14, 1952.

Pontiac Sedan Reported Stolen

A 1952 Pontiac sedan was reported stolen from the 1000 block on East Main sometime early last night.

WEIGHT LIFTER

BLOOMINGTON, Ind. (AP) — The American Olympic team might have fared even better in the weight lifting classes last summer if Bloomington police had caught a certain thief.

Fiery, Smarting Itch of Common Skin Rash

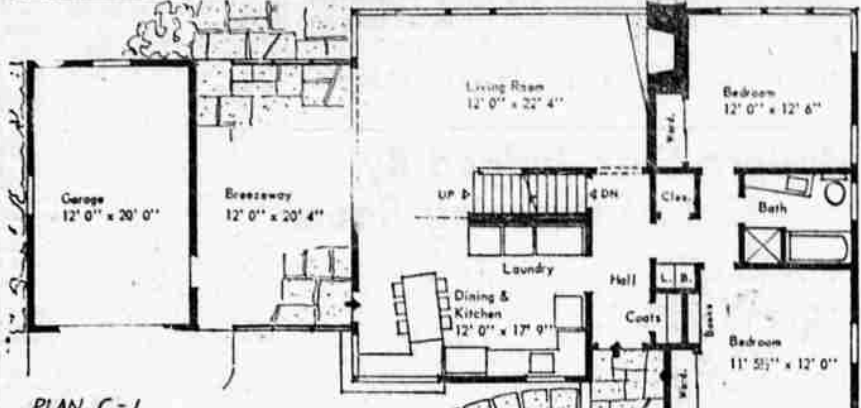
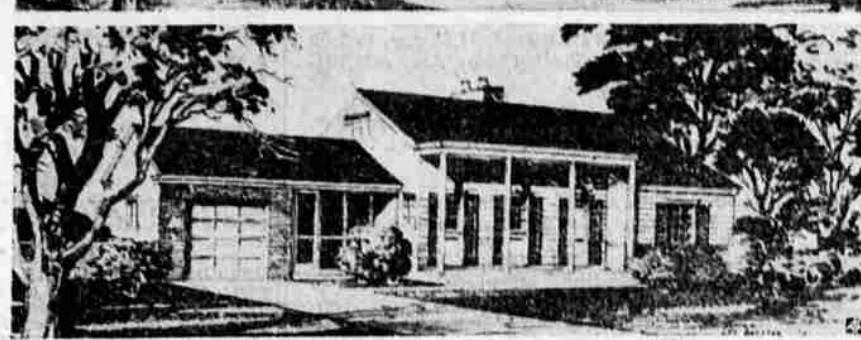
Don't stand such torment another hour! Just smear Reinalin Ointment on your irritated skin at once. See how quickly its medically proven ingredients in lanolin bring blissful, long-lasting relief.

HOTEL GEARHART

RELAX, enjoy yourself at Oregon's finest coast resort hotel. Swimming, sunbake, golf, ride or just loaf by day. Sleep soundly to the song of the surf at night.

WRITE, WIRE OR PHONE FOR RESERVATIONS

HOMES FOR AMERICANS



TWO EXTERIOR choices for one floor plan distinguish this "Young America House," design C-1 by Victor Civkin, 12 Ermine St., Fairfield, Con. N. The only difference between the two facades involves slight changes in the windows. Two bedrooms and an extra bath are provided on the second floor.

ON THE HOUSE

By DAVID G. BAREUTHER, AP Real Estate Editor

You shouldn't be shocked so often by a fuse, or possibly set your house on fire, when hardware stores are carrying new and virtually foolproof electric plugs, wire splicers, outlets and other gadgets.

These plastic inventions are so slick you can unroll away your screw driver and pliers as far as any household electrical extension is concerned.

You merely push the end of an ordinary No. 18 plastic covered parallel electric cord into a slot in these fittings, press a trigger down and the connection is made so securely you won't pull the cord out.

It's no longer necessary to strip insulation from the ends of the wires, struggle with fine strands, try to tie an underwriter knot and tighten terminal screws in such a way that wayward strands don't short the circuit. Insulation is left right on the cord. You poke it into the plug or outlet and when you press the trigger down to clamp it in position, sharp teeth cut through the insulation to make a contact.

Of course, you have to use the modern flat style parallel wire cord. The fittings won't work with round or old style twisted cords. But most lamps, fans and other small accessories nowadays are equipped with this type of cord.

The main reason you can only consider these gadgets "virtually foolproof is that they are so handy they could encourage somebody to overload a circuit. If you string an extension from an outlet in your wall and attach a triple outlet to it and then string other extensions from those three outlets, with triple outlets on each one, you can very quickly draw a power load for which your wiring was not intended.

The hazard that arises in such an arrangement is that when a fuse melts and someone foolishly replaces it with a heavier fuse the heat in the wires is bound to char the insulation eventually to a danger point.

But for a few extra lights or small fans it is probably unlikely that an average household circuit would be overloaded. An easy way to notice if any circuit is being overloaded is to watch the lights in another part of the house. If the dim under the strain, or if motors slow down, an overload is obvious. Use nothing heavier than 15-watt fuses on ordinary household lighting circuits and you have a common safeguard.

However, these new plastic extension accessories were developed by the Monowatt department of the General Electric Co., at Providence, R. I., and they carry the approval label of the Underwriters Laboratories for safety in themselves. The main feature of their handiness lies in getting light where you need it, or a fan where you can enjoy it, rather than staging an electrical equipment show in your living room.

QUALITY Photo Finishing AT YOUR CRYSTAL-KOTE DEALERS... In or Out of State! UNDERWOOD'S Photo Service 211 Underwood Bldg. Phone 4819

SEWING MACHINE SERVICE AND EXCHANGE 422 Main St. Phone 6771

NEVER ACCEPT LESS than this guaranteed quality... St. Joseph ASPIRIN

Advertisement for Blitz Weinhard featuring a portrait of a man and the text 'BLITZ WEINHARD FOR ME!' and 'MILD!'.

Los Angeles Jewish Group Defends Sen. Richard Nixon

DENVER (AP) — A Los Angeles Jewish organization denounced Monday as utterly unfounded what it termed vicious "insinuations of anti-Semitism" directed against Sen. Richard M. Nixon of California, the GOP vice presidential nominee.

Seeking to counteract such attacks, Nixon made public a statement sent to him by the Community Relations Committee of the Los Angeles Jewish Community Council.

The California Senator is basing his operations at present at the campaign headquarters of Gen. Dwight D. Eisenhower, the Republican presidential candidate.

Eisenhower himself spoke out to days ago against appeals to bigotry and prejudice in political campaigns.

He did so after a Minnesota GOP leader told him that state had been flooded with anti-Jewish literature attacking both the general and President Truman.

In a statement of his own, Nixon said those who would "stir up race hatred and bigotry are violating every concept of Americanism."

The Los Angeles statement was signed by Judge Isaac Paetz, chairman of the Jewish Community Relations Committee.

Speaking out "with candor and frankness," Paetz said: "Against Senator Nixon the insinuations of anti-Semitism have been particularly vicious. There are many of us who support the Senator for the vice presidency. There are many of us who oppose him."

"Whatever our political differences, however, upon this one fact we have no difference. We resent and deplore this accusation."

West Guesses At Red Move

LONDON (AP) — Western diplomats expressed the view Monday Russia and Red China may be planning to apply more pressure against the Allies in Korea, Indochina and Japan.

Moscow Radio quoted Chinese Prime Minister Chou En-lai as saying he will call for more credit goods and arms to supplement the \$300 million dollar five-year loan granted by Russia two years ago.

Additionally, Russian help may be enlisted to rebuild the industrial and armament-producing potential of Manchuria in view of the heavy drain imposed on the Chinese by the Korean war.

Fulfillment of two other 1950 agreements between Russia and Red China are expected to follow the Moscow talks.

The first would require Russia to quit the Port Arthur naval base in Manchuria by the end of this year.

The second bound Russia to hand over the Changchun railroads to China, also by the end of the year.

High leaders—including Prime Minister Churchill—have been predicting privately for some time that a general switch of Red pressures is taking place from Europe to the Far East and particularly to Japan.

They were reinforced in their belief when Prime Minister Stalin last month reportedly told Premier Nenni, the Italian Socialist leader, he thought Japan now must be considered as one of the main focal points of East-West struggle. The other was said to be Germany.

Harry Lauds Typo Union

CINCINNATI (AP) — President Truman, in a message read to the International Typographical Union convention here Monday, promised to keep up his battle "in office and out" against the Taft-Hartley act.

The President declared: "The progress which labor has made, and its contributions to the national welfare, have been threatened by the injustices contained in the Taft-Hartley act, which has been particularly unfair in its application to the International Typographical Union."

"You cannot solve labor-management problems by vindictive legislation of this character."

Mr. Truman praised the ITU as "a leader in the development of better living standards for working men and women."

Drowning Takes Lakeview Youth

LAKEVIEW (AP) — Eight-year-old Dennis True of Lakeview died in a hospital here Sunday after a fishing accident in Dog Lake.

Coroner Everett Osterman said the boy was fishing with his father, Carl True, when their boat upset Saturday. The father rescued the boy and brought him here, but he never recovered consciousness.

Largest piano stock in this part of the West

\* Knabe \* Kimball \* Wurlitzer Other Leading Make Pianos—Low Prices, Low Terms—Rent a Piano—Rent and Apply Plan—Louis R. Mann Piano Co. 120 N. 7th Hammond Organ 629 MAIN Ph. 7412

TREAT YOUR CAR NOW!

LUBRICATION SPECIAL... AUGUST ONLY \* Change Motor Oil... \$2.00 (5 Quart Capacity Cars Only) \* LUBRICATE CHASSIS... \$1.25 \* SERVICE AIR CLEANER... \$5.00 \* Repack Front Wheel Bearings... 2.00 REGULAR PRICE \$5.75 AUGUST PACKAGE PRICE ONLY \$4.75 ASHLEY CHEVROLET Phone 4113 410 So. 6th

Advertisement for Hotel Gearhart, Oregon, featuring a picture of the hotel and text: 'HOTEL GEARHART GEARHART, OREGON'.

Advertisement for Don's Better Boyswear, featuring a picture of a boy and text: 'DON'S BETTER BOYSWEAR'.