

Go to Church Sunday CHURCH DIRECTORY

Klamath Revival Center
Pastors, Mr. and Mrs. J. R. Griffith
2807 Etna Phone 2-9720
10:00 A.M.—Sunday School
11:00 A.M.—Morning Worship
7:30 A.M.—Evangelistic Service
7:30 A.M.—Wednesday — Prayer
7:45 P.M.—Wednesday — Prayer
Meeting
7:30 A.M.—Friday—Bible Study
7:45 P.M.—Saturday — Young
People's Meeting

Church of Christ
1774 Arthur Phone 2-1140
10:00 A.M.—Bible Classes
11:00 A.M.—Morning Worship
7:30 P.M.—Mutual edification
8:00 P.M.—Wednesday—
Bible Study

Missionary Baptist Church
4134 Douglas
Elder C. V. Blanchard, pastor
9:45 A.M.—Sunday School
11:00 A.M.—Morning Worship
7:00 P.M.—Training Union
8:00 P.M.—Evening Service
7:00 P.M.—Thursday—Bible Study

Church of the Nazarene
Garden and Martin
Rev. Deal Van De Grift
9:45 A.M.—Sunday School
11:00 A.M.—Morning Worship
6:45 P.M.—Young People
7:30 P.M.—Evangelistic Service
7:30 P.M.—Wednesday Prayer
Service
8:30 P.M.—Wednesday Choir
Practice

First Baptist
N. 8th and Washington
Dr. E. M. Causey, pastor
9:45 A.M.—Sunday School
11:00 A.M.—Morning Worship
6:15 P.M.—Training Union
7:30 P.M.—Evening Service
7:00 P.M.—Wednesday, Young
People's Meeting
8:00 P.M.—Wednesday, mid-week
Prayer Service
7:30 P.M.—Thursday, Choir
Rehearsal

Christian Science Church
Tenth and Washington
11:00 A.M.—Sunday School
11:00 A.M.—Sunday Service
8:00 P.M.—Wednesday Evening
Service
5:30 P.M.—Saturday Radio
Program—KFJI

Klamath Temple
1007 Pine Phone 6325
Rev. D. B. Anderson, minister
Rev. Warner Book, Asst. Pastor
9:45 A.M.—Sunday School
11:00 A.M.—Morning Worship
6:30 P.M.—Overcomer Services
7:45 P.M.—Evangelistic Service
7:45 P.M.—Wednesday, Bible
Study and Prayer
Meeting
7:45 P.M.—Friday, Young People's
Service
7:30 P.M.—Saturday, Radio
Broadcast—KFJI

**Community Church
of the Brethren**
4723 Bristol
Rev. Edward Lander
9:45 A.M.—Church School
11:00 A.M.—Morning Worship
7:00 to 9:00 P.M.—Wednesday —
Hobby & Craft Club

First Presbyterian Church
601 Pine
Rev. David Barnett Jr., Pastor
9:30 A.M.—Church School for all
ages
9:30 A.M.—Morning Worship
6:00 P.M.—Junior High Westmin-
ster Fellowship
6:30 P.M.—Senior High Westmin-
ster Fellowship

Hope Evangelical Lutheran
Shasta School
Rev. M. R. Anderson, Pastor
Parsonage, 1143 Kane
9:45 A.M.—Sunday School
11:00 A.M.—Worship Service

**Stewart-Lenox
Baptist**
9:45 A.M.—Sunday School
11:00 A.M.—Worship Service
6:30 P.M.—Training Union
7:30 P.M.—Worship Service
7:00 P.M.—Wednesday Prayer and
Choir Practice

First Presbyterian
Merrill
Rev. George A. Milne
10:00 A.M.—Sunday School
11:00 A.M.—Divine Service
7:00 P.M.—Fireside Service
Nursery Open
11:00 A.M.—Morning Worship
9:45 A.M.—Sunday School
10:00 A.M.—Bible Class
10:30 A.M.—Lutheran Hour, KFJI

First Covenant
823 Walnut — Phone 5317
Carl G. Strom, Pastor
9:45 A.M.—Sunday School
11:00 A.M.—Morning Worship
7:45 P.M.—Fellowship Hour
8:00 P.M.—Wednesday—Bible
Study and Prayer

Congregational
Garden near Martin Sts.
Rev. Donald M. Casaday
9:45 A.M.—Church School
7:00 P.M.—High School Pilgrim
Fellowship

**Reorganized Church of
Jesus Christ of Latter
Day Saints**
Ninth and Plum St.
Sunday
9:45 A.M.—Sunday School
11:00 A.M.—Church Service
7:30 P.M.—Evening Worship
8:00 P.M.—Wednesday Fellowship
For further information call 2-0175

Merrill Baptist Mission
Recreation Building
9:45 A.M.—Sunday School
11:00 A.M.—Worship Service

Keno Gospel Center
Phone 2-3043
Rev. Gladys Milford, Pastor
10:00 A.M.—Sunday School
11:00 A.M.—Morning Worship

**Church of Jesus Christ
Of Latter Day Saints**
Home and Martin
9:00 A.M.—Priesthood Meeting
10:30 A.M.—Sunday School
7:00 P.M.—Sacrament
2:00 P.M.—Sat. Primary Meeting
2:00 P.M.—Tuesday Relief Society
7:30 P.M.—Tuesday—M. I. A.

Bible Baptist Church
2244 Wiard
Keith P. Fields, Pastor
9:30 A.M.—Sunday School
11:00 A.M.—Morning Worship
6:30 P.M.—Baptist League
7:30 P.M.—Evening Service
7:30 P.M.—Wednesday, All Family
Church Night

St. Paul's Episcopal
801 Jefferson — Phone 3585
Galen H. Onstad, Rector
8:00 A.M.—Holy Communion
9:30 A.M.—Church School
11:00 A.M.—Morning Prayer
7:30 P.M.—Young People's
Fellowship

Peace Memorial Presbyterian
4431 S. Sixth — Phone 5057
Rev. Dwayne L. Proett
9:30 A.M.—Church School
11:00 A.M.—Morning Worship

Pelican City
Rev. Fred Tedrick, Pastor
Baptist Mission
3715 Lakewood Blvd.
9:30 A.M.—Sunday School
10:45 A.M.—Morning Worship
7:00 P.M.—Evening Worship
7:00 P.M.—Thursday, Young
People's Meeting

First Methodist
10th and High
Rev. Lloyd Holloway
9:45 A.M.—Sunday School
11:00 A.M.—Morning Worship

Seventh-Day Adventist
1735 Main
Rev. P. C. Alderson
SATURDAY
9:30 A.M.—Sabbath School
11:00 A.M.—Church Service
SUNDAY
7:30 P.M.—Evangelistic Service
MIDWEEK
7:30 P.M.—Wednesday and Friday
Evangelistic Service

Klamath Lutheran
Cross and Crescent
Rev. Irvin Tweet
8:00 A.M.—Worship
9:45 A.M.—Sunday School
11:00 A.M.—Divine Worship
7:00 P.M.—Senior League

Union Gospel Mission
251 Commercial
Pastor C. M. Timms
7:30 P.M.—Evening Services
10:00 A.M.—Bible School
11:00 A.M.—Worship Service

Calvary Baptist
E. Main at Garden
Burgess P. Baggett, Pastor
9:45 A.M.—Sunday School

First Christian
Ninth and Pine Sts.
George Alder, Minister
9:45 A.M.—Bible School
11:00 A.M.—Morning Worship
8:30 P.M.—Christian Endeavor
7:30 P.M.—Evening Worship
7:30 P.M.—Prayer Meeting
Wednesday

Gospel Tabernacle
Altamont and Maryland
Rev. W. D. Bigby, Pastor
10:00 A.M.—Sunday School
11:00 A.M.—Morning Service
7:30 P.M.—Evening Service
Also services at 7:30 p.m.
Saturday and Wednesday

Klamath Latter Rain Church
1627 Washburn Way
Rev. Art Simpson
10:00 A.M.—Sunday School, all ages
8:00 P.M.—Evening Service

Pilgrim Holiness
2301 Wantland Phone 5584
Rev. O. D. Weaver
9:45 A.M.—Sunday School
11:00 A.M.—Morning Service
6:45 P.M.—Y. P. Fellowship
7:30 P.M.—Evangelistic Meeting
7:30 P.M.—Wednesday — Prayer

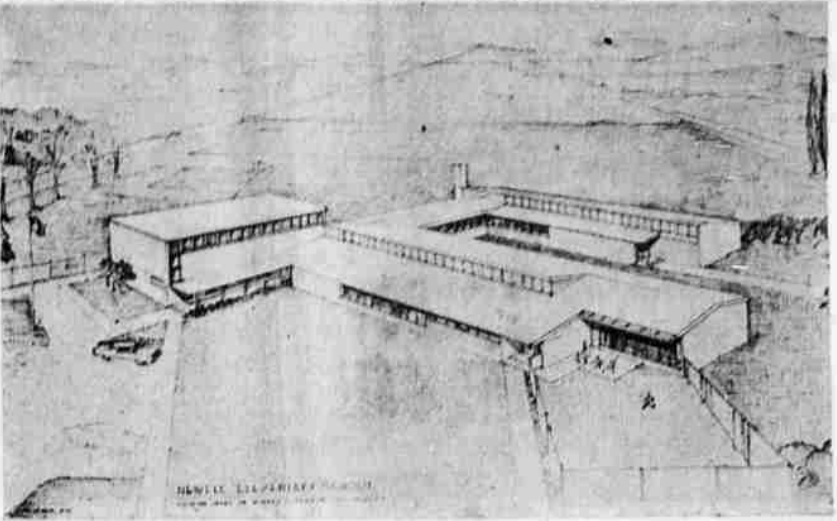
OTI Sunday School
10:00 A.M.—Sunday School every
Sunday
7:45 P.M.—Friday Bible Study
3:30 P.M.—Fri. Children's church
7:45 P.M.—Sunday Eve. Services
7:45 P.M.—Tuesday, Prayer
Meeting

Assembly of God
746 Oak
Rev. Daniel Bayliss, Minister
Rev. Donald Arings, Asst. Pastor
SUNDAY SERVICES
9:45 A.M.—Sunday School
11:00 A.M.—Morning Services
6:45 P.M.—Youth Services
7:30 P.M.—Evangelistic Rally
MID-WEEK SERVICES
7:30 P.M.—Tuesday, Bible Study
and Prayer Service
10:00 A.M.—Thursday,
Prayer Service
7:30 P.M.—Thursday,
Preaching Service
8:00 P.M.—Saturday,
Street Service

Free Methodist
1918 Oregon Ave.
Rev. Fred C. Neumann, Pastor
SUNDAY SERVICES
8:30 A.M.—Broadcast, KPLW
9:45 A.M.—Sunday School
11:00 A.M.—Worship Service
6:45 P.M.—Young People
7:45 P.M.—Evening Evangelistic
Service
MID-WEEK SERVICES
7:30 P.M.—Wednesday, Midweek
Prayer

Kingdom Hall
Jehovah's Witnesses
833 N. 9th
7:45 P.M.—Sunday Watchtower
Study
7:45 P.M.—Wednesday Bible Study
7:45 P.M.—Friday Service Meeting
8:45 P.M.—Friday—Theocratic
School

First Church of Christ, Scientist
A Branch of The Mother Church, The First Church of Christ, Scientist,
in Boston, Mass.
10th and Washington
Services Sunday Service, 11:00 a.m.
Sunday School, 11:00 a. m.
Wednesday evening Meetings, 8:00 o'clock.
Lesson-Sermon Subject August 10
"SPIRIT"
Christian Science Reading Room
1021 Main St.
Radio Broadcast -- Sat. 5:30 p.m. -- KFJI
"THE IMPORTANCE OF SPIRITUAL VALUES"



AS IT APPEARS in an architect's drawing, this is the proposed new elementary school building to be built at Newell, Calif. The Duncan Construction Company of Klamath Falls was low bidder on the job, at \$213,000, and completion is expected around March 1, 1953. The plans were drawn by the Howard Perrin architectural firm.

Solvation Army
400 Klamath
Maj. and Mrs. Jack Little
10:00 A.M.—Sunday School
11:00 A.M.—Hollins Meeting
11:00 A.M.—Junior Church
6:30 P.M.—Young People's
Meeting
8:00 P.M.—Salvation Meeting

Immanuel Baptist
11th and High
Rev. W. F. Templin
9:45 A.M.—Bible School
11:00 A.M.—Morning Worship
6:30 P.M.—Young People
7:30 P.M.—Evening Worship
7:30 P.M.—Wednesday Evening
Prayer Service
6:15 P.M.—Training Union
7:30 P.M.—Evening Worship

MID-WEEK SERVICES
7:15 P.M.—Wednesday, Teachers
Meeting
8:00 P.M.—Wednesday, Prayer
Service
2:00 P.M.—Thursday, WMU

First Church of God
2802 Altamont
Rev. C. H. Beahm
9:45 A.M.—Sunday School
11:00 A.M.—Morning Worship
6:45 P.M.—Young People
7:30 P.M.—Evangelistic
7:30 P.M.—Bible Study

Church of Christ
2205 Wantland — Phone 3668
Arthur C. Blackwell
10:00 A.M.—Bible Classes
11:00 A.M.—Worship Services
8:00 P.M.—Evening Service
8:00 P.M.—Wednesday Service

Zion Lutheran Church
11th and High
Rev. R. E. Graef, Pastor
11:00 A.M.—Morning Worship
9:45 A.M.—Sunday School
10:00 A.M.—Bible Class
10:30 A.M.—Lutheran Hour, KFJI

Buckhorn Springs
MINERAL
SANITARIUM
HOT MINERAL AND MUD BATHS
ARE EXCELLENT FOR RHEUMATISM,
ARTHRITIS, SCIATICA AND NEURITIS
CARRON DIODESE VAPOR BATHS
GOOD FOR A T.N.M.A.
ECZEMA, SINUS, HIGH
AND LOW BLOOD PRES-
SURE.
FOR RESERVATIONS OR
DETAILED INFORMATION
ADDRESS AT: J.
ASHLAND, ORE. OR
PHONE LOW COSTANCE
DR. HERMAN WELLES, DIRECTOR
CRIOGRAPHIC PHYSICIAN

Mt. Laki Community
Arthur L. Rise, Minister
9:45 A.M.—Sunday School
11:00 A.M.—Worship Service
7:30 P.M.—Christian Endeavor

Malin Community Church
(Presbyterian)
Rev. George A. Shuman, Pastor
9:45 A.M.—Sunday School, all ages
11:00 A.M.—Morning Worship
7:00 P.M.—Senior and Junior
High Young People's
Societies

**Astoria Children
Get Fishing Trip**

ASTORIA — Officially and
with a straight face the Astoria
school board has put off opening
of school for a week so the chil-
dren can go fishing.
The scheduled resumption of
school for the fall term ran head
on into the annual Astoria Salmon
derby. Just about everybody here
who can climb into a boat and
hold a pole takes part in the derby
which ends Sept. 6. School now will
start Sept. 8.

**Steelmen Meet
With Union**

PITTSBURGH — Three steel
firms met with the CIO United
Steelworkers in formal contract
talks Thursday but bell wether
U. S. Steel Corp. recessed nego-
tiations until a later date.
Both U. S. Steel and the union
said they expect an early resump-
tion but set no date.
The talks recessed, a company
spokesman said, to permit both
sides to study the terms.
U. S. Steel Corp. is operating
under an interim agreement with
the USW.

For a Useful Gift—Shop Volght's
Pioneer Office Supply, 629 Main
GOSPEL MEETINGS
Nightly 7:30 o'clock
AUGUST 3-15
Evangelist Herel Ottwell
of Hartford, Ill.
CHURCH OF CHRIST
1774 Arthur Phone 2-1140

Pastor Ends 8 Years Here

The Rev. Keith P. Fields will con-
clude his eighth year Sunday as
pastor of the Bible Baptist Church.
Fields was called by the Bible
Baptist Church from a pastorate
in Wasco in July 1944. Prior to
that he pastored two churches al-
ternately in Southern Oregon,
the Community Church of Eagle
Point and the Presbyterian Church
of Butte Falls.
Fields is a native Oregonian. He
is a graduate of the Bible Insti-
tute of Los Angeles and has stud-
ied in Westmont College of Santa
Barbara, Calif., and in the Western
Baptist Theological Seminary of
Portland.
His text for the morning worship
service is from the book of He-
brews and the message will be,
"The Superiority of Jesus Christ."

SENSITIVE TESTING DEVICE
NEW YORK — The Bell tele-
phone laboratories have added to
their testing equipment a micro-
balance so sensitive that it can
determine the weight of a frag-
ment of lint caught floating in the
air. It is an intricate device, and
can show changes as minute as
250 millionths of a gram.

The Memorial Chapel
KIETH O'HAIR, Funeral Director
Fine at Six Phone 3456

**Friendly
Helpfulness**
To Every
Creed and Purse
**Ward's Klamath
Funeral Home**
Marguerite M. Ward
and Sons
925 High Phone 3334

Altamont Mission

Sponsored by the
Klamath Baptist Assoc.
Operating with the Southern
Baptist Convention
Meeting Temporarily
at the
**Klamath County
Fair Building**
SUNDAY SCHOOL — 9:45
WORSHIP — 11:00
W. P. Weeks in Charge
WELCOME!

Masonic PICNIC

Sunday, Aug. 10th
Malin Community Park
11 A.M. Till Dark

- Free swimming for kids!
Pool open at 1 p.m.
- Games for young and old!
Baseball, horseshoes—
Games start at 2:30 p.m.
- Bring your lunch and utensils!
We furnish coffee, pop, ice cream

Picnic for all Masons, Star, Amaranth,
White Shrine and other Masonic Bodies
All entered Apprentice, Fellow Craft
Masons and families invited
**PICNIC SPONSORED BY ALL
MASONIC BODIES IN THE
KLAMATH BASIN**

CAN NOW!
Red Bluff
PEACHES
"Picked for Flavor"
HALES and ELBERTAS
Your favorite Grocer has a good supply of
this beautiful, tree-ripened fruit. Buy now
while quality and price is right! They are
now at their peak.

A DELICIOUS "FLAVOR for AUGUST"

**Crater Lake
Fresh Peach
ICE CREAM**

The out-of-this-world flavor of SUMMER-FRESH peaches
skillfully blended to taste-tantalizing perfection with Crater
Lake's forever favorite rich vanilla ice cream!

KLAMATH FALLS CREAMERY *Crater Lake Dairy Products* FROM YOUR DEALER OR CRATER LAKE ROUTE 100