

Service Information OF RELIABLE FIRMS

Copyright by F. M. Conley, 1934

AIR CONDITIONING Ph. 5683
RING'S SHEET METAL — 2104 1/2 So. 6th

Heating—Ventilating
Sheet Metal Work of All Kinds

Auto Repairing 24 hour tow Service Ph. 9904
KUZMIC & ZEIGLER — 27 MAIN

• Complete Motor Overhaul • Brake - Battery Service
• Front End Aligning • Reboring and Crankshaft Grinding in the Car
• OPEN 8 to 9 EVERY DAY

AWNINGS-UPHOLSTERY Ph. 4362
HOWIE BROS. — 2357 So. 6th

PRE-CUT ORNAMENTAL IRON
Custom Made Drapes - Auto Upholstering - Auto Seat Covers

BAKERY GOODS Ph. 8344
KLAMATH PASTRY SHOP — 920 Main

Birthday and Wedding Cakes Made to Order!
Breads, Cakes, Pies, Pastries Baked Fresh Daily

"Boysen" Colorizer Paints Ph. 3197
J. W. COPELAND LUMBER CO. — 66 Main

CHOICE OF 1322 COLORS
Everything in Paints and Building Materials

CAMERAS PHOTO FINISHING Ph. 3586
BUD'S PHOTO SERVICE — 1031 Main

Films in at 10 out at 4
Complete Line of Camera and Photo Supplies

Commercial Refrigeration Ph. 6617
OREGON EQUIPMENT CO. — 203 So. Riverside

SALES and SERVICE — Restaurant and Store Equipment
CARRIER - REFRIGERAIRE - YORK

DRY CLEANING The Better Kind Ph. 4622
SANITONE

RELIABLE CLEANERS — 1116 Main

ELECTRIC CONTRACTING Ph. 2-2528
LEACH SERVICE CO. — 123 So. 6th St.

Commercial - Residential - Industrial
Electrical Engineering - Motors - Supplies
"If It Is Electrical Work We Do It!"

ELECTRIC HEATING Ph. 2-3221
ELECTRIC HEATER SALES CO. — 623 Pine

Equipe Theatre Building
WESIX RESIDENTIAL AND COMMERCIAL HEATING EQUIPMENT
AND INSTALLATION
Headquarters for your every electrical heating need.

ELECTRIC MOTORS Ph. 3268
HAHN ELECTRIC CO. — 735 Commercial St.

Motor Rewinding - Repair - Bearings - Motors and Equipment
Remond and Delco Motors

ELECTRIC-RADIO SERVICE Ph. 7810
LUNDSTEN'S RADIO & ELECTRIC — 4526 So. 6th

Auto & Home Radio Repair — All Makes — Guaranteed Service
Arvin Radios — G.E., Hamilton Beach Toastmaster — Kitchen Appliances

EXPERT WATCH REPAIR 4524 S. 6th
HYDE'S JEWELERS — 4524 So. 6th

"Expert Watch Repair at an Honest Price"
Electronic Timing — Jewelry Manufacturing and Repair
Diamonds For Less

FLOOR COVERINGS Ph. 8495
CALHOUN'S — 357 E. Main

LINOLEUM—TILE—FINE CARPET
Armstrong Linoleum — Bigelow, Mohawk, Gulistan Carpets

FURS - COLD STORAGE Ph. 3573
GREGORY FUR SHOP — 815 E. Main

Fur Restyling — Cleaning — Glazing Our Specialty
"For Your New Fur Coat — See Gregory's First"

GLASS, DOORS, WINDOWS Ph. 7477
THE GLASS HOUSE — 215 No. 11th

Plate, Crystal and Window Glass — Storm Sash
and Screens to Order — Estimates Gladly Given

GUNSMITHING Ph. 4273
RALPH'S GUN SHOP — 4820 So. 6th

NOT A TINKER SHOP
I Consider Tools, Machinery and Know-how Essential
To Qualify as a Gunsmith

INSULATION ROOFING SIDING Ph. 6161
HENRIS ROOFING CO. — 410 Adams

F.H.A. Terms — Free Estimates — All Workmanship and Materials
Guaranteed — Materials For Sale!

INSURANCE Ph. 5529
CHILCOTE INSURANCE AGENCY — 111 N. 9th St.

Specialists In
• AUTO • FIRE • CASUALTY • MARINE • BONDS
"The Pioneer Insurance Agency - Established 1909"

PRESCRIPTIONS We Give Ph. 3445
S&H Green Stamps

SUBURBAN DRUG CO. — 3950 So. 6th
Complete Human and Animal Health Supplies
Free Parking Lot — Open 9 to 9 Every Day (7 Days)

SAW FILING Ph. 4672
BODENHAMER SAW FILING — 351 E. Main

Thoroughly Modern
LAWNMOWER SHARPENING AND REPAIRING
B.S.A. Motorcycles — Reo Lawnmowers — Briggs Stratton and
Clinton Motors



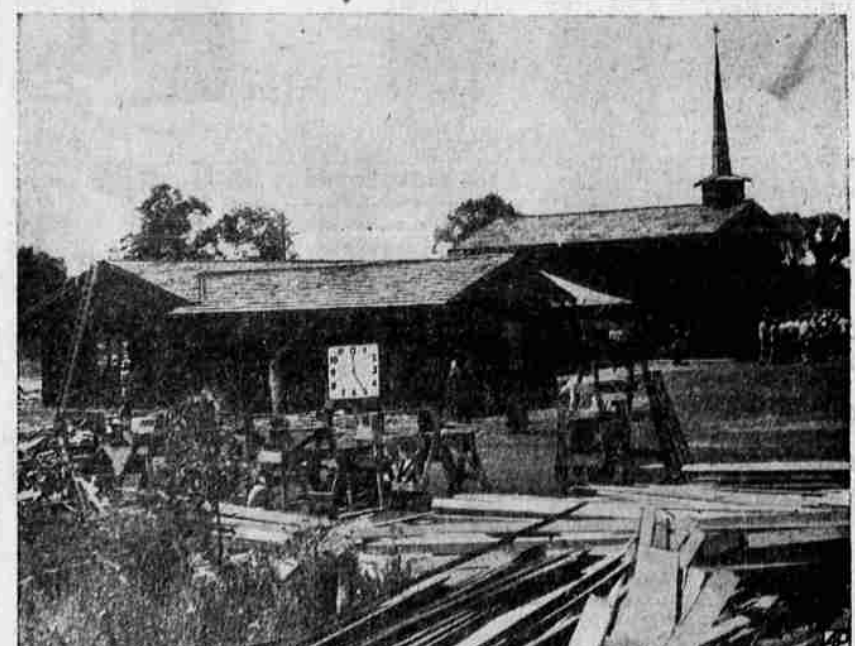
STRETCHING THE MESH across the mouth of the English Channel to entrap the young gollings driven in on an early morning drive. In the foreground is the airboat. The dog in the picture is Ramon, belonging to Bill Anderson of the California fish and game department. A veteran of such things as this goose-chasing, Ramon was more interested in the cameraman than the birds.



U. S. OLYMPIC FENCERS—Janice-Lee York, Mrs. Maxine Mitchell, national fencing champion, and Polly Crause, left to right, all of Los Angeles, display the trophies they won in the New York competition to represent the United States in the 1932 Olympics.



TWO FAWNS AND A DEER—Sharon Hoover plays in Sanford, Fla., with two fawns which town's zoo keeper says are doubly rare since mother gave birth to similar set, year ago.



CHURCH IN A DAY—Clock shows completion time, just over five hours after 180 workers, donating their labor, began to build this church in a suburb of Santa Rosa, Calif.



FESTIVAL DANCERS—Ferry Berde and members of Trinidad's Little Carib group rehearse an East Indian legend dance for Caribbean Festival to be held in Puerto Rico, Aug. 1-10.

Legal Notice

NOTICE OF FILING APPLICATION FOR CHANGE IN POINT OF DIVERSION OF WATER
Notice is hereby given that Roy T. and Margaret Anne Whitlatch have filed an application in the office of the State Engineer, Klamath Falls, Oregon, for the approval of a change in point of diversion of water from the Klamath River and its tributaries a water right was adjudicated in the name of Francis B. Buerge, et al. in NW 1/4 Sec. 11, NW 1/4 Sec. 20, NW 1/4 Sec. 21, NW 1/4 Sec. 22, NW 1/4 Sec. 23, NW 1/4 Sec. 24, NW 1/4 Sec. 25, NW 1/4 Sec. 26, NW 1/4 Sec. 27, NW 1/4 Sec. 28, NW 1/4 Sec. 29, NW 1/4 Sec. 30, NW 1/4 Sec. 31, NW 1/4 Sec. 32, NW 1/4 Sec. 33, NW 1/4 Sec. 34, NW 1/4 Sec. 35, NW 1/4 Sec. 36, NW 1/4 Sec. 37, NW 1/4 Sec. 38, NW 1/4 Sec. 39, NW 1/4 Sec. 40, NW 1/4 Sec. 41, NW 1/4 Sec. 42, NW 1/4 Sec. 43, NW 1/4 Sec. 44, NW 1/4 Sec. 45, NW 1/4 Sec. 46, NW 1/4 Sec. 47, NW 1/4 Sec. 48, NW 1/4 Sec. 49, NW 1/4 Sec. 50, NW 1/4 Sec. 51, NW 1/4 Sec. 52, NW 1/4 Sec. 53, NW 1/4 Sec. 54, NW 1/4 Sec. 55, NW 1/4 Sec. 56, NW 1/4 Sec. 57, NW 1/4 Sec. 58, NW 1/4 Sec. 59, NW 1/4 Sec. 60, NW 1/4 Sec. 61, NW 1/4 Sec. 62, NW 1/4 Sec. 63, NW 1/4 Sec. 64, NW 1/4 Sec. 65, NW 1/4 Sec. 66, NW 1/4 Sec. 67, NW 1/4 Sec. 68, NW 1/4 Sec. 69, NW 1/4 Sec. 70, NW 1/4 Sec. 71, NW 1/4 Sec. 72, NW 1/4 Sec. 73, NW 1/4 Sec. 74, NW 1/4 Sec. 75, NW 1/4 Sec. 76, NW 1/4 Sec. 77, NW 1/4 Sec. 78, NW 1/4 Sec. 79, NW 1/4 Sec. 80, NW 1/4 Sec. 81, NW 1/4 Sec. 82, NW 1/4 Sec. 83, NW 1/4 Sec. 84, NW 1/4 Sec. 85, NW 1/4 Sec. 86, NW 1/4 Sec. 87, NW 1/4 Sec. 88, NW 1/4 Sec. 89, NW 1/4 Sec. 90, NW 1/4 Sec. 91, NW 1/4 Sec. 92, NW 1/4 Sec. 93, NW 1/4 Sec. 94, NW 1/4 Sec. 95, NW 1/4 Sec. 96, NW 1/4 Sec. 97, NW 1/4 Sec. 98, NW 1/4 Sec. 99, NW 1/4 Sec. 100, NW 1/4 Sec. 101, NW 1/4 Sec. 102, NW 1/4 Sec. 103, NW 1/4 Sec. 104, NW 1/4 Sec. 105, NW 1/4 Sec. 106, NW 1/4 Sec. 107, NW 1/4 Sec. 108, NW 1/4 Sec. 109, NW 1/4 Sec. 110, NW 1/4 Sec. 111, NW 1/4 Sec. 112, NW 1/4 Sec. 113, NW 1/4 Sec. 114, NW 1/4 Sec. 115, NW 1/4 Sec. 116, NW 1/4 Sec. 117, NW 1/4 Sec. 118, NW 1/4 Sec. 119, NW 1/4 Sec. 120, NW 1/4 Sec. 121, NW 1/4 Sec. 122, NW 1/4 Sec. 123, NW 1/4 Sec. 124, NW 1/4 Sec. 125, NW 1/4 Sec. 126, NW 1/4 Sec. 127, NW 1/4 Sec. 128, NW 1/4 Sec. 129, NW 1/4 Sec. 130, NW 1/4 Sec. 131, NW 1/4 Sec. 132, NW 1/4 Sec. 133, NW 1/4 Sec. 134, NW 1/4 Sec. 135, NW 1/4 Sec. 136, NW 1/4 Sec. 137, NW 1/4 Sec. 138, NW 1/4 Sec. 139, NW 1/4 Sec. 140, NW 1/4 Sec. 141, NW 1/4 Sec. 142, NW 1/4 Sec. 143, NW 1/4 Sec. 144, NW 1/4 Sec. 145, NW 1/4 Sec. 146, NW 1/4 Sec. 147, NW 1/4 Sec. 148, NW 1/4 Sec. 149, NW 1/4 Sec. 150, NW 1/4 Sec. 151, NW 1/4 Sec. 152, NW 1/4 Sec. 153, NW 1/4 Sec. 154, NW 1/4 Sec. 155, NW 1/4 Sec. 156, NW 1/4 Sec. 157, NW 1/4 Sec. 158, NW 1/4 Sec. 159, NW 1/4 Sec. 160, NW 1/4 Sec. 161, NW 1/4 Sec. 162, NW 1/4 Sec. 163, NW 1/4 Sec. 164, NW 1/4 Sec. 165, NW 1/4 Sec. 166, NW 1/4 Sec. 167, NW 1/4 Sec. 168, NW 1/4 Sec. 169, NW 1/4 Sec. 170, NW 1/4 Sec. 171, NW 1/4 Sec. 172, NW 1/4 Sec. 173, NW 1/4 Sec. 174, NW 1/4 Sec. 175, NW 1/4 Sec. 176, NW 1/4 Sec. 177, NW 1/4 Sec. 178, NW 1/4 Sec. 179, NW 1/4 Sec. 180, NW 1/4 Sec. 181, NW 1/4 Sec. 182, NW 1/4 Sec. 183, NW 1/4 Sec. 184, NW 1/4 Sec. 185, NW 1/4 Sec. 186, NW 1/4 Sec. 187, NW 1/4 Sec. 188, NW 1/4 Sec. 189, NW 1/4 Sec. 190, NW 1/4 Sec. 191, NW 1/4 Sec. 192, NW 1/4 Sec. 193, NW 1/4 Sec. 194, NW 1/4 Sec. 195, NW 1/4 Sec. 196, NW 1/4 Sec. 197, NW 1/4 Sec. 198, NW 1/4 Sec. 199, NW 1/4 Sec. 200, NW 1/4 Sec. 201, NW 1/4 Sec. 202, NW 1/4 Sec. 203, NW 1/4 Sec. 204, NW 1/4 Sec. 205, NW 1/4 Sec. 206, NW 1/4 Sec. 207, NW 1/4 Sec. 208, NW 1/4 Sec. 209, NW 1/4 Sec. 210, NW 1/4 Sec. 211, NW 1/4 Sec. 212, NW 1/4 Sec. 213, NW 1/4 Sec. 214, NW 1/4 Sec. 215, NW 1/4 Sec. 216, NW 1/4 Sec. 217, NW 1/4 Sec. 218, NW 1/4 Sec. 219, NW 1/4 Sec. 220, NW 1/4 Sec. 221, NW 1/4 Sec. 222, NW 1/4 Sec. 223, NW 1/4 Sec. 224, NW 1/4 Sec. 225, NW 1/4 Sec. 226, NW 1/4 Sec. 227, NW 1/4 Sec. 228, NW 1/4 Sec. 229, NW 1/4 Sec. 230, NW 1/4 Sec. 231, NW 1/4 Sec. 232, NW 1/4 Sec. 233, NW 1/4 Sec. 234, NW 1/4 Sec. 235, NW 1/4 Sec. 236, NW 1/4 Sec. 237, NW 1/4 Sec. 238, NW 1/4 Sec. 239, NW 1/4 Sec. 240, NW 1/4 Sec. 241, NW 1/4 Sec. 242, NW 1/4 Sec. 243, NW 1/4 Sec. 244, NW 1/4 Sec. 245, NW 1/4 Sec. 246, NW 1/4 Sec. 247, NW 1/4 Sec. 248, NW 1/4 Sec. 249, NW 1/4 Sec. 250, NW 1/4 Sec. 251, NW 1/4 Sec. 252, NW 1/4 Sec. 253, NW 1/4 Sec. 254, NW 1/4 Sec. 255, NW 1/4 Sec. 256, NW 1/4 Sec. 257, NW 1/4 Sec. 258, NW 1/4 Sec. 259, NW 1/4 Sec. 260, NW 1/4 Sec. 261, NW 1/4 Sec. 262, NW 1/4 Sec. 263, NW 1/4 Sec. 264, NW 1/4 Sec. 265, NW 1/4 Sec. 266, NW 1/4 Sec. 267, NW 1/4 Sec. 268, NW 1/4 Sec. 269, NW 1/4 Sec. 270, NW 1/4 Sec. 271, NW 1/4 Sec. 272, NW 1/4 Sec. 273, NW 1/4 Sec. 274, NW 1/4 Sec. 275, NW 1/4 Sec. 276, NW 1/4 Sec. 277, NW 1/4 Sec. 278, NW 1/4 Sec. 279, NW 1/4 Sec. 280, NW 1/4 Sec. 281, NW 1/4 Sec. 282, NW 1/4 Sec. 283, NW 1/4 Sec. 284, NW 1/4 Sec. 285, NW 1/4 Sec. 286, NW 1/4 Sec. 287, NW 1/4 Sec. 288, NW 1/4 Sec. 289, NW 1/4 Sec. 290, NW 1/4 Sec. 291, NW 1/4 Sec. 292, NW 1/4 Sec. 293, NW 1/4 Sec. 294, NW 1/4 Sec. 295, NW 1/4 Sec. 296, NW 1/4 Sec. 297, NW 1/4 Sec. 298, NW 1/4 Sec. 299, NW 1/4 Sec. 300, NW 1/4 Sec. 301, NW 1/4 Sec. 302, NW 1/4 Sec. 303, NW 1/4 Sec. 304, NW 1/4 Sec. 305, NW 1/4 Sec. 306, NW 1/4 Sec. 307, NW 1/4 Sec. 308, NW 1/4 Sec. 309, NW 1/4 Sec. 310, NW 1/4 Sec. 311, NW 1/4 Sec. 312, NW 1/4 Sec. 313, NW 1/4 Sec. 314, NW 1/4 Sec. 315, NW 1/4 Sec. 316, NW 1/4 Sec. 317, NW 1/4 Sec. 318, NW 1/4 Sec. 319, NW 1/4 Sec. 320, NW 1/4 Sec. 321, NW 1/4 Sec. 322, NW 1/4 Sec. 323, NW 1/4 Sec. 324, NW 1/4 Sec. 325, NW 1/4 Sec. 326, NW 1/4 Sec. 327, NW 1/4 Sec. 328, NW 1/4 Sec. 329, NW 1/4 Sec. 330, NW 1/4 Sec. 331, NW 1/4 Sec. 332, NW 1/4 Sec. 333, NW 1/4 Sec. 334, NW 1/4 Sec. 335, NW 1/4 Sec. 336, NW 1/4 Sec. 337, NW 1/4 Sec. 338, NW 1/4 Sec. 339, NW 1/4 Sec. 340, NW 1/4 Sec. 341, NW 1/4 Sec. 342, NW 1/4 Sec. 343, NW 1/4 Sec. 344, NW 1/4 Sec. 345, NW 1/4 Sec. 346, NW 1/4 Sec. 347, NW 1/4 Sec. 348, NW 1/4 Sec. 349, NW 1/4 Sec. 350, NW 1/4 Sec. 351, NW 1/4 Sec. 352, NW 1/4 Sec. 353, NW 1/4 Sec. 354, NW 1/4 Sec. 355, NW 1/4 Sec. 356, NW 1/4 Sec. 357, NW 1/4 Sec. 358, NW 1/4 Sec. 359, NW 1/4 Sec. 360, NW 1/4 Sec. 361, NW 1/4 Sec. 362, NW 1/4 Sec. 363, NW 1/4 Sec. 364, NW 1/4 Sec. 365, NW 1/4 Sec. 366, NW 1/4 Sec. 367, NW 1/4 Sec. 368, NW 1/4 Sec. 369, NW 1/4 Sec. 370, NW 1/4 Sec. 371, NW 1/4 Sec. 372, NW 1/4 Sec. 373, NW 1/4 Sec. 374, NW 1/4 Sec. 375, NW 1/4 Sec. 376, NW 1/4 Sec. 377, NW 1/4 Sec. 378, NW 1/4 Sec. 379, NW 1/4 Sec. 380, NW 1/4 Sec. 381, NW 1/4 Sec. 382, NW 1/4 Sec. 383, NW 1/4 Sec. 384, NW 1/4 Sec. 385, NW 1/4 Sec. 386, NW 1/4 Sec. 387, NW 1/4 Sec. 388, NW 1/4 Sec. 389, NW 1/4 Sec. 390, NW 1/4 Sec. 391, NW 1/4 Sec. 392, NW 1/4 Sec. 393, NW 1/4 Sec. 394, NW 1/4 Sec. 395, NW 1/4 Sec. 396, NW 1/4 Sec. 397, NW 1/4 Sec. 398, NW 1/4 Sec. 399, NW 1/4 Sec. 400, NW 1/4 Sec. 401, NW 1/4 Sec. 402, NW 1/4 Sec. 403, NW 1/4 Sec. 404, NW 1/4 Sec. 405, NW 1/4 Sec. 406, NW 1/4 Sec. 407, NW 1/4 Sec. 408, NW 1/4 Sec. 409, NW 1/4 Sec. 410, NW 1/4 Sec. 411, NW 1/4 Sec. 412, NW 1/4 Sec. 413, NW 1/4 Sec. 414, NW 1/4 Sec. 415, NW 1/4 Sec. 416, NW 1/4 Sec. 417, NW 1/4 Sec. 418, NW 1/4 Sec. 419, NW 1/4 Sec. 420, NW 1/4 Sec. 421, NW 1/4 Sec. 422, NW 1/4 Sec. 423, NW 1/4 Sec. 424, NW 1/4 Sec. 425, NW 1/4 Sec. 426, NW 1/4 Sec. 427, NW 1/4 Sec. 428, NW 1/4 Sec. 429, NW 1/4 Sec. 430, NW 1/4 Sec. 431, NW 1/4 Sec. 432, NW 1/4 Sec. 433, NW 1/4 Sec. 434, NW 1/4 Sec. 435, NW 1/4 Sec. 436, NW 1/4 Sec. 437, NW 1/4 Sec. 438, NW 1/4 Sec. 439, NW 1/4 Sec. 440, NW 1/4 Sec. 441, NW 1/4 Sec. 442, NW 1/4 Sec. 443, NW 1/4 Sec. 444, NW 1/4 Sec. 445, NW 1/4 Sec. 446, NW 1/4 Sec. 447, NW 1/4 Sec. 448, NW 1/4 Sec. 449, NW 1/4 Sec. 450, NW 1/4 Sec. 451, NW 1/4 Sec. 452, NW 1/4 Sec. 453, NW 1/4 Sec. 454, NW 1/4 Sec. 455, NW 1/4 Sec. 456, NW 1/4 Sec. 457, NW 1/4 Sec. 458, NW 1/4 Sec. 459, NW 1/4 Sec. 460, NW 1/4 Sec. 461, NW 1/4 Sec. 462, NW 1/4 Sec. 463, NW 1/4 Sec. 464, NW 1/4 Sec. 465, NW 1/4 Sec. 466, NW 1/4 Sec. 467, NW 1/4 Sec. 468, NW 1/4 Sec. 469, NW 1/4 Sec. 470, NW 1/4 Sec. 471, NW 1/4 Sec. 472, NW 1/4 Sec. 473, NW 1/4 Sec. 474, NW 1/4 Sec. 475, NW 1/4 Sec. 476, NW 1/4 Sec. 477, NW 1/4 Sec. 478, NW 1/4 Sec. 479, NW 1/4 Sec. 480, NW 1/4 Sec. 481, NW 1/4 Sec. 482, NW 1/4 Sec. 483, NW 1/4 Sec. 484, NW 1/4 Sec. 485, NW 1/4 Sec. 486, NW 1/4 Sec. 487, NW 1/4 Sec. 488, NW 1/4 Sec. 489, NW 1/4 Sec. 490, NW 1/4 Sec. 491, NW 1/4 Sec. 492, NW 1/4 Sec. 493, NW 1/4 Sec. 494, NW 1/4 Sec. 495, NW 1/4 Sec. 496, NW 1/4 Sec. 497, NW 1/4 Sec. 498, NW 1/4 Sec. 499, NW 1/4 Sec. 500, NW 1/4 Sec. 501, NW 1/4 Sec. 502, NW 1/4 Sec. 503, NW 1/4 Sec. 504, NW 1/4 Sec. 505, NW 1/4 Sec. 506, NW 1/4 Sec. 507, NW 1/4 Sec. 508, NW 1/4 Sec. 509, NW 1/4 Sec. 510, NW 1/4 Sec. 511, NW 1/4 Sec. 512, NW 1/4 Sec. 513, NW 1/4 Sec. 514, NW 1/4 Sec. 515, NW 1/4 Sec. 516, NW 1/4 Sec. 517, NW 1/4 Sec. 518, NW 1/4 Sec. 519, NW 1/4 Sec. 520, NW 1/4 Sec. 521, NW 1/4 Sec. 522, NW 1/4 Sec. 523, NW 1/4 Sec. 524, NW 1/4 Sec. 525, NW 1/4 Sec. 526, NW 1/4 Sec. 527, NW 1/4 Sec. 528, NW 1/4 Sec. 529, NW 1/4 Sec. 530, NW 1/4 Sec. 531, NW 1/4 Sec. 532, NW 1/4 Sec. 533, NW 1/4 Sec. 534, NW 1/4 Sec. 535, NW 1/4 Sec. 536, NW 1/4 Sec. 537, NW 1/4 Sec. 538, NW 1/4 Sec. 539, NW 1/4 Sec. 540, NW 1/4 Sec. 541, NW 1/4 Sec. 542, NW 1/4 Sec. 543, NW 1/4 Sec. 544, NW 1/4 Sec. 545, NW 1/4 Sec. 546, NW 1/4 Sec. 547, NW 1/4 Sec. 548, NW 1/4 Sec. 549, NW 1/4 Sec. 550, NW 1/4 Sec. 551, NW 1/4 Sec. 552, NW 1/4 Sec. 553, NW 1/4 Sec. 554, NW 1/4 Sec. 555, NW 1/4 Sec. 556, NW 1/4 Sec. 557, NW 1/4 Sec. 558, NW 1/4 Sec. 559, NW 1/4 Sec. 560, NW 1/4 Sec. 561, NW 1/4 Sec. 562, NW 1/4 Sec. 563, NW 1/4 Sec. 564, NW 1/4 Sec. 565, NW 1/4 Sec. 566, NW 1/4 Sec. 567, NW 1/4 Sec. 568, NW 1/4 Sec. 569, NW 1/4 Sec. 570, NW 1/4 Sec. 571, NW 1/4 Sec. 572, NW 1/4 Sec. 573, NW 1/4 Sec. 574, NW 1/4 Sec. 575, NW 1/4 Sec. 576, NW 1/4 Sec. 577, NW 1/4 Sec. 578, NW 1/4 Sec. 579, NW 1/4 Sec. 580, NW 1/4 Sec. 581, NW 1/4 Sec. 582, NW 1/4 Sec. 583, NW 1/4 Sec. 584, NW 1/4 Sec. 585, NW 1/4 Sec. 586, NW 1/4 Sec. 587, NW 1/4 Sec. 588, NW 1/4 Sec. 589, NW 1/4 Sec. 590, NW 1/4 Sec. 591, NW 1/4 Sec. 592, NW 1/4 Sec. 593, NW 1/4 Sec. 594, NW 1/4 Sec. 595, NW 1/4 Sec. 596, NW 1/4 Sec. 597, NW 1/4 Sec. 598, NW 1/4 Sec. 599, NW 1/4 Sec. 600, NW 1/4 Sec. 601, NW 1/4 Sec. 602, NW 1/4 Sec. 603, NW 1/4 Sec. 604, NW 1/4 Sec. 605, NW 1/4 Sec. 606, NW 1/4 Sec. 607, NW 1/4 Sec. 608, NW 1/4 Sec. 609, NW 1/4 Sec. 610, NW 1/4 Sec. 611, NW 1/4 Sec. 612, NW 1/4 Sec. 613, NW 1/4 Sec. 614, NW 1/4 Sec. 615, NW 1/4 Sec. 616, NW 1/4 Sec. 617, NW 1/4 Sec. 618, NW 1/4 Sec. 619, NW 1/4 Sec. 620, NW 1/4 Sec. 621, NW 1/4 Sec. 622, NW 1/4 Sec. 623, NW 1/4 Sec. 624, NW 1/4 Sec. 625, NW 1/4 Sec. 626, NW 1/4 Sec. 627, NW 1/4 Sec. 628, NW 1/4 Sec. 629, NW 1/4 Sec. 630, NW 1/4 Sec. 631, NW 1/4 Sec. 632, NW 1/4 Sec. 633, NW 1/4 Sec. 634, NW 1/4 Sec. 635, NW 1/4 Sec. 636, NW 1/4 Sec. 637, NW 1/4 Sec. 638, NW 1/4 Sec. 639, NW 1/4 Sec. 640, NW 1/4 Sec. 641, NW 1/4 Sec. 642, NW 1/4 Sec. 643, NW 1/4 Sec. 644, NW 1/4 Sec. 645, NW 1/4 Sec. 646, NW 1/4 Sec. 647, NW 1/4 Sec. 648, NW 1/4 Sec. 649, NW 1/4 Sec. 650, NW 1/4 Sec. 651, NW 1/4 Sec. 652, NW 1/4 Sec. 653, NW 1/4 Sec. 654, NW 1/4 Sec. 655, NW 1/4 Sec. 656, NW 1/4 Sec. 657, NW 1/4 Sec. 658, NW 1/4 Sec. 659, NW 1/4 Sec. 660, NW 1/4 Sec. 661, NW 1/4 Sec. 662, NW 1/4 Sec. 663, NW 1/4 Sec. 664, NW 1/4 Sec. 665, NW 1/4 Sec. 666, NW 1/4 Sec. 667, NW 1/4 Sec. 668, NW 1/4 Sec. 669, NW 1/4 Sec. 670, NW 1/4 Sec. 671, NW 1/4 Sec. 672, NW 1/4 Sec. 673, NW 1/4 Sec. 674, NW 1/4 Sec. 675, NW 1/4 Sec. 676, NW 1/4 Sec. 677, NW 1/4 Sec. 678, NW 1/4 Sec. 679, NW 1/4 Sec. 680, NW 1/4 Sec. 681, NW 1/4 Sec. 682, NW 1/4 Sec. 683, NW 1/4 Sec. 684, NW 1/4 Sec. 685, NW 1/4 Sec. 686, NW 1/4 Sec. 687, NW 1/4 Sec. 688, NW 1/4 Sec. 689, NW 1/4 Sec. 690, NW 1/4 Sec. 691, NW 1/4 Sec. 692, NW 1/4 Sec. 693, NW 1/4 Sec. 694, NW 1/4 Sec. 695, NW 1/4 Sec. 696, NW 1/4 Sec. 697, NW 1/4 Sec. 698, NW 1/4 Sec. 699, NW 1/4 Sec. 700, NW 1/4 Sec. 701, NW 1/4 Sec. 702, NW 1/4 Sec. 703, NW 1/4 Sec. 704, NW 1/4 Sec. 705, NW 1/4 Sec. 706, NW 1/4 Sec. 707, NW 1/4 Sec. 708, NW 1/4 Sec. 709, NW 1/4 Sec. 710, NW 1/4 Sec. 711, NW 1/4 Sec. 712, NW 1/4 Sec. 713, NW 1/4 Sec. 714, NW 1/4 Sec. 715, NW 1/4 Sec. 716, NW 1/4 Sec. 717, NW 1/4 Sec. 718, NW 1/4 Sec. 719, NW 1/4 Sec. 720, NW 1/4 Sec. 721, NW 1/4 Sec. 722, NW 1/4 Sec. 723, NW 1/4 Sec. 724, NW 1/4 Sec. 725, NW 1/4 Sec. 726, NW 1/4 Sec. 727, NW 1/4 Sec. 728, NW 1/4 Sec. 729, NW 1/4 Sec. 730, NW 1/4 Sec. 731, NW 1/4 Sec. 732, NW 1/4 Sec. 733, NW 1/4 Sec.