

Go to Church Sunday CHURCH DIRECTORY

Klamath Revival Center
Pastor, Rev. Dorothy McClain
1623 Mitchell Phone 4320
10:00 A.M.—Sunday School
11:00 A.M.—Morning Worship
7:45 A.M.—Evangelistic Service
7:00 P.M.—Tuesday—AYA Group
7:45 P.M.—Wednesday—Prayer Meeting
7:45 P.M.—Friday—Bible Study
7:45 P.M.—Saturday—Young People's Meeting

Church of Christ
1174 Arthur Phone 2-1140
10:00 A.M.—Bible Classes
11:00 A.M.—Morning Worship
7:30 P.M.—Mutual edification
8:00 P.M.—Wednesday—Bible Study

Missionary Baptist Church
4124 Douglas
Elder C. V. Blanchard, pastor
9:45 A.M.—Sunday School
11:00 A.M.—Morning Worship
7:00 P.M.—Training Union
8:30 P.M.—Evening Service
7:00 P.M.—Thursday—Bible Study

Church of the Nazarene
Gardea and Martin
Rev. Deal Van De Grift
9:45 A.M.—Sunday School
11:00 A.M.—Morning Worship
6:45 P.M.—Young People
7:30 P.M.—Evangelistic Service
7:30 P.M.—Wednesday Prayer Service
8:30 P.M.—Wednesday Choir Practice

First Baptist
N. 8th and Washington
Dr. E. M. Causey, pastor
9:45 A.M.—Sunday School
11:00 A.M.—Morning Worship
6:15 P.M.—Training Union
7:30 P.M.—Evening Service
7:00 P.M.—Wednesday, Young People's Meeting
8:00 P.M.—Wednesday, mid-week Prayer Service
7:30 P.M.—Thursday, Choir Rehearsal

Christian Science Church
Tenth and Washington
1:00 A.M.—Sunday School
1:00 A.M.—Sunday Service
8:00 P.M.—Wednesday Evening Service
8:30 P.M.—Saturday Radio Program—KFJI

Klamath Temple
1007 Pine Phone 6325
Rev. D. B. Anderson, minister
Rev. Warner Bock, Asst. Pastor
9:45 A.M.—Sunday School
11:00 A.M.—Morning Worship
8:30 P.M.—Overcoming Services
7:45 P.M.—Evangelistic Service
7:45 P.M.—Wednesday, Bible Study and Prayer Meeting
7:45 P.M.—Friday, Young People's Service
7:30 P.M.—Saturday, Radio Broadcast—KFJI

Community Church of the Brethren
4732 Bristol
Rev. Edward Lander
9:45 A.M.—Church School
11:00 A.M.—Morning Worship
7:00 to 9:00 P.M.—Wednesday—Hobby & Craft Club

First Presbyterian Church
601 Pine
Rev. David Barnett Jr., Pastor
9:30 A.M.—Church School for all Ages
9:30 A.M.—Morning Worship
6:00 P.M.—Junior High Westminster Fellowship
6:30 P.M.—Senior High Westminster Fellowship

Hope Evangelical Lutheran
Shasta School
Rev. M. R. Anderson, Pastor
Parsonage, 1143 Kane
9:45 A.M.—Sunday School
11:00 A.M.—Worship Service

Stewart-Lenox Baptist
W. E. Weeks, Pastor
9:45 A.M.—Sunday School
11:00 A.M.—Worship Service
6:30 P.M.—Training Union
7:30 P.M.—Worship Service
7:00 P.M.—Wednesday Prayer and Choir Practice

First Presbyterian
Merrill
Rev. George A. Milne
10:00 A.M.—Sunday School
11:00 A.M.—Divine Service
7:00 P.M.—Fireside Service
Nursery, Open
11:00 A.M.—Morning Worship
9:45 A.M.—Sunday School
10:00 A.M.—Bible Class
10:30 A.M.—Lutheran Hour, KPJI

Union Gospel Mission
251 Commercial
Pastor C. M. Timms
7:30 P.M.—Evening Services
10:00 A.M.—Bible School
11:00 A.M.—Worship Service

Congregational
Garden near Martin St.
Rev. Donald M. Cassiday
9:45 A.M.—Church School
11:00 A.M.—Worship Service
7:00 P.M.—High School Pilgrim Fellowship

Reorganized Church of Jesus Christ of Latter Day Saints
Ninth and Plum St.
Sunday
9:45 A.M.—Sunday School
11:00 A.M.—Church Service
7:30 P.M.—Evening Worship
8:00 P.M.—Wednesday Fellowship
For further information call 2-0175

Friendly Helpfulness
To Every Creed and Pulse
Ward's Klamath Funeral Home
Marguerite M. Ward and Sons
925 High Phone 3334

Merrill Baptist Mission
Recreation Building
9:45 A.M.—Sunday School
11:00 A.M.—Worship Service

Keno Gospel Center
Phone 2-3042
Rev. Gladys Milford, Pastor
10:00 A.M.—Sunday School
11:00 A.M.—Morning Worship

Church of Jesus Christ of Latter Day Saints
Home and Martin
9:00 A.M.—Priesthood Meeting
10:30 A.M.—Sunday School
7:00 P.M.—Sacrament
2:00 P.M.—Sat. Primary Meeting
2:00 P.M.—Tuesday Relief Society
7:30 P.M.—Tuesday—M. I. A.

Bible Baptist Church
2244 Ward
Keith P. Fields, Pastor
9:30 A.M.—Sunday School
11:00 A.M.—Morning Worship
8:30 P.M.—Baptist League
7:30 P.M.—Evening Service
7:30 P.M.—Wednesday, All Family Church Night

St. Paul's Episcopal
801 Jefferson — Phone 3385
Galen H. Onstad, Rector
8:00 A.M.—Holy Communion
9:30 A.M.—Church School
11:00 A.M.—Morning Prayer
7:30 P.M.—Young People's Fellowship

Peace Memorial Presbyterian
4431 S. Sixth — Phone 5057
Rev. Dwayne L. Proett
9:30 A.M.—Church School
11:00 A.M.—Morning Worship

Pelican City
Rev. Fred Tedrick, Pastor
Rapid Mission
3738 Lakewood Blvd.
9:30 A.M.—Sunday School
10:45 A.M.—Morning Worship
7:00 P.M.—Evening Worship
7:00 P.M.—Thursday, Young People's Meeting

First Methodist
10th and High
Rev. Lloyd Holloway
9:45 A.M.—Morning Worship
11:00 A.M.—Sunday School

Seventh-Day Adventist
1735 Main
Rev. P. C. Alderson
SATURDAY
9:30 A.M.—Sabbath School
11:00 A.M.—Church Service
SUNDAY
7:30 P.M.—Evangelistic Service
MIDWEEK
7:30 P.M.—Wednesday and Friday Evangelistic Service

Klamath Lutheran
Cross and Crescent
Rev. Irvin Tweet
8:00 A.M.—Worship
9:45 A.M.—Sunday School
11:00 A.M.—Divine Worship
7:00 P.M.—Senior League

First Covenant
823 Walnut — Phone 8517
Carl G. Strom, Pastor
9:45 A.M.—Sunday School
11:00 A.M.—Morning Worship
7:45 P.M.—Fellowship Hour
8:00 P.M.—Wednesday—Bible Study and Prayer

Calvary Baptist
E. Main at Garden
Burgess P. Baggett, Pastor
9:45 A.M.—Sunday School

First Christian
Ninth and Pine Sts.
George Eder, Minister
9:45 A.M.—Bible School
11:00 A.M.—Morning Worship
6:30 P.M.—Christian Endeavor
7:30 P.M.—Evening Worship
7:30 P.M.—Prayer Meeting
Wednesday

Gospel Tabernacle
Altamont and Maryland
Rev. W. D. Bigby, Pastor
10:00 A.M.—Sunday School
11:00 A.M.—Morning Service
7:30 P.M.—Evenings Worship
Also services at 7:30 p.m. Saturday and Wednesday

Klamath Latter Rain Church
1627 Washburn Way
Rev. Art Simpson
10:00 A.M.—Sunday School, all ages
8:00 P.M.—Evening Service

Pilgrim Holiness
2301 Wantland Phone 5384
Rev. O. D. Weaver
9:45 A.M.—Sunday School
11:00 A.M.—Morning Service
8:45 P.M.—Y.P.S.
7:30 P.M.—Evangelistic Meeting
7:30 P.M.—Wednesday — Prayer

OTI Sunday School
Great House
10:00 A.M.—Sunday School every Sunday
7:45 P.M.—Friday Bible Study
3:30 P.M.—Fri. Children's church
7:45 P.M.—Sunday Eye Service
7:45 P.M.—Tuesday, Prayer Meeting

GOING TO CHURCH
PH. 2-1234

First Church of Christ, Scientist
A Branch of The Mother Church, The First Church of Christ, Scientist, in Boston, Mass.
10th and Washington
Services Sunday Service, 11:00 a.m.
Sunday School, 11:00 a.m.
Wednesday evening Meeting, 8:00 o'clock.
Lesson-Sermon Subject July 20 "LIFE"
Christian Science Reading Room
1021 Main St.
Radio Broadcast -- Sat. 5:30 p.m. -- KFJI
"NO NEED FOR FEAR"

Assembly of God
246 Oak
Rev. Daniel Bayless, Minister
Rev. Donald Annas, Asst. Pastor
SUNDAY SERVICES
9:45 A.M.—Sunday School
11:00 A.M.—Morning Services
6:45 P.M.—Youth Services
7:30 P.M.—Evangelistic Rally
MID-WEEK SERVICES
7:30 P.M.—Tuesday, Bible Study and Prayer Service
10:00 A.M.—Thursday, Prayer Service
7:30 P.M.—Thursday, Preaching Service
8:00 P.M.—Saturday, Street Service

Mt. Laki Community
Arthur L. Rice, Minister
9:45 A.M.—Sunday School
11:00 A.M.—Worship Service
7:30 P.M.—Christian Endeavor

Free Methodist
E.S. S. 9th
Rev. Fred C. Neumann, Pastor
SUNDAY SERVICES
8:30 A.M.—Broadcast, KFLW
9:45 A.M.—Morning Worship
11:00 A.M.—Worship Service
6:45 P.M.—Young People
7:45 P.M.—Evening Evangelistic Service
MID-WEEK SERVICES
7:30 P.M.—Wednesday, Midweek Prayer

Main Community Church (Presbyterian)
Rev. George A. Shuman, Pastor
9:45 A.M.—Sunday School, all ages
11:00 A.M.—Morning Worship
7:00 P.M.—Senior and Junior High Young People's Societies

Kingdom Hall Jehovah's Witnesses
833 N. 9th
7:45 P.M.—Sunday Watchtower Study
7:45 P.M.—Wednesday Bible Study
7:45 P.M.—Friday Service Meeting
8:45 P.M.—Friday—Theocratic School

Salvation Army
400 Klamath
Maj. and Mrs. Jack Little
10:00 A.M.—Sunday School
11:00 A.M.—Holiness Meeting
11:30 A.M.—Junior and Senior High Young People's Meeting
8:00 P.M.—Salvation Meeting

Immanuel Baptist
11th and High
Rev. W. F. Templin
9:45 A.M.—Bible School
11:00 A.M.—Morning Worship
6:30 P.M.—Young People
7:30 P.M.—Evening Worship
7:30 P.M.—Wednesday Evening Prayer Service
11:00 A.M.—Morning Worship
6:15 P.M.—Training Union
7:30 P.M.—Evening Worship
MID-WEEK SERVICES
7:15 P.M.—Wednesday, Teachers Meeting
8:00 P.M.—Wednesday, Prayer Service
2:00 P.M.—Thursday, WMU

First Church of God
2802 Altamont
Rev. C. H. Bestam
9:45 A.M.—Sunday School
11:00 A.M.—Morning Worship
6:45 P.M.—Young People
7:30 P.M.—Evangelistic
7:30 P.M.—Bible Study

Church of Christ
2205 Wantland — Phone 8668
Arthur C. Blackwell
10:00 A.M.—Bible Classes
11:00 A.M.—Worship Service
8:00 P.M.—Evening Service
8:00 P.M.—Wednesday Service

Zion Lutheran Church
11th and High
Rev. R. E. Graef, Pastor
11:00 A.M.—Morning Worship
9:45 A.M.—Sunday School
10:00 A.M.—Bible Class
10:30 A.M.—Lutheran Hour, KPJI

Women Form Church Club
Hope Lutheran Church women have organized as "Women of the Church."
Heading the new group is Agnes Runkh, president. Other officers are: vice president, Helen Hill; secretary, Betty Parsons; treasurer, Mildred Bussey; statistician, Elsie Cook; and Altar Guild chairman, Fern Broyles.
According to the constitution, all women who join Hope Lutheran automatically become members of the women's organization.

DOG CHEWS MONEY
VANCOUVER, Canada (AP) — A dog here that will chew anything found a large envelope and started chewing, scattering \$180 in bills. Police were called and the money was returned to Dr. M. L. Edgar, who lost the envelope on the street a few days previously.



WATCHING OVER HIS PEOPLE—Brother Dennis of the Catholic Foreign Mission Society uses binoculars as he serves as air-craft spotter from 100-foot bell tower of the Maryknoll Seminary, Ossining, N. Y. The tower is used in 'round-the-clock' vigil by the Brothers who join volunteers across the nation in setting up lookout posts for hostile aircraft.

HST Signs Mine Bill

WASHINGTON (AP) — President Truman has signed a bill that permits the government to close coal mines it considers unsafe.

But he says the measure isn't really strong enough to prevent disaster.

The President, in signing the measure Wednesday, said it was a significant step toward ending "the appalling toll of death and injury to miners."

But he said Congress eventually will have to enact more adequate legislation.

Truman listed what he called five defects in the measure:

1. Coal mines which regularly employ less than 15 persons are exempt "regardless of whether a major disaster might be imminent."
2. The bill is aimed solely at preventing major disasters from explosion, fire, inundation, man-trip or man-fall accidents—which accounted for only about 7 per cent of coal mine fatalities during the past 20 years.
3. There are several exemptions to safety provisions, particularly regarding replacement of dangerous electrical equipment and faulty ventilation systems—which have been the causes of most recent major disasters.
4. The measure is difficult to enforce because of complex procedural provisions on inspections and appeals.
5. The measure gives the director of the Bureau of Mines the enforcement power rather than the Secretary of Interior, which the President requested.

Before now, the federal government could only recommend safety measures to mine owners and had no power to enforce the recommendations.

Hans Norland Fire Insurance, Phone 2-2515.

Shop Oregon Woolen's JULY CLEARANCE
for big savings
on men's wear!



REV. VIC ERNEST

Evangelistic Services Set

A 2-weeks spiritual crusade is to start Sunday at the Bible Baptist Church, 2244 Ward Street, with the Rev. Vic Ernest in the pulpit, assisted by Bible Baptist Pastor Keith Fields.

The Reverend Ernest has been a minister for 17 years and has held pastorates in North Dakota, Minnesota and Oregon. For the past two years, he has been doing evangelistic work.

The special services here are open to the public.

Buckhorn Springs
MINERAL SPRINGS
SANITARIUM
HOT MINERAL AND MUD BATHS
ARE EXCELLENT FOR RHEUMATISM, ASTHMA, SCIATICA AND NEURITIS
CARBON DIOXIDE VAPOR BATHS
GOOD FOR A S.T.M.A.
SCISSOR, BRUSH, SHAM
AND LOW FLOOR PRESSURE
FOR RESERVATIONS OR
DETAILED INFORMATION
ADDRESS: ST. J.
ASHLAND, OREG. OR
PHONE LONG DISTANCE
DR. HERMAN WEXLER, DIRECTOR
CHIEF OF CLINIC—PHYSICIAN

Church Plan Week's School

A training school for Sunday School workers will be conducted by the Klamath Baptist Association next week.

Classes will meet each night, Monday through Friday, at the First Baptist Church, 7:30 p.m.

The school will be directed by Perley Webster, Sunday School superintendent for the association.

The courses to be offered and the teachers are as follows: teaching adults in Sunday School, The Rev. E. R. Jacks; teaching adults

Proett Has Two Services

The Rev. D. L. Proett, Peace Memorial Presbyterian Church, is to deliver the sermon at First Presbyterian Church services Sunday, 9:30 a.m. He will also conduct regular services at his own church at 11 a.m.

Proett will be substituting for Phil Hitchcock, who was to have been in the pulpit in the absence of vacationing David Barnett Jr.

Hitchcock had to cancel his pulpit appearance because of a throat ailment.

FOX GOOD PROVIDER
FERGUS FALLS, Minn. (AP)—A sly mother fox was a good provider for her five young. Here's what diggers found in her den: the remains of five mallard ducks, one small pig, three jack rabbits, one weasel, one muskrat, one woodchuck and several pheasants.

ALWAYS WORTH A CHEER!

AT YOUR FAVORITE FOUNTAIN

WURLITZER
A magnificent piano. Many lovely styles and finishes to choose from.
LOUIS R. MANN
PIANO CO.
120 No. 7th

The Memorial Chapel
KIETH O'HAIR, Funeral Director
Pine at Sixth Phone 3456

Have Fun in the Sun...

BUT FIRST give your eyes the glare protection they need. Wear **CALOBAR SUN GLASSES**. Summertime is the hardest season of the year on your eyes... your vision is priceless, guard it well. **CALOBAR SUN GLASSES** are available in your prescription, with or without bifocals.

Choose from a wide selection of fashion frames. Including attractive rattan trimmed, candy striped and many others. Stop in soon—no appointment necessary.

Hours: 9:00 a.m. to 5:30 p.m.
Open all Day Saturday
Friendly credit terms, always.

COLUMBIAN OPTICAL CO.
831 W. Alder, Portland
SEARS, ROEBUCK and CO.
324 N.E. Grand Ave., Portland
COLUMBIAN OPTICAL CO.
729 Main St., Klamath Falls

Doctors Sid G. Niles, Omar J. Niles, Alexander, Brower, Leitner and Wesseler

Montgomery Ward
9th and Pine Phone 3188

WHY PAY MORE PER GALLON?
FOR TOP QUALITY RUBBER-BASE PAINT,
Wards Excelon 4.29 Gallon

One of the finest rubber-base flat wall paints on the market—yet Wards Excelon costs you less per gallon than most other nationally advertised finishes. Excelon costs less in the long run too because it lasts for years—gives walls and woodwork a lovely soft finish that stands up under repeated scrubbing. Excelon goes on easily, dries quickly. Choice of 8 soft pastel-deep tones available for slightly more per gallon. Visit Wards today—see our line of fine quality paints and supplies.

PRACTICAL Long-lasting beauty—can be washed repeatedly. Excellent for walls, woodwork, ceilings.
READY-MIXED Comes to you ready to apply—no need to thin or mix. Just stir, then brush or roll it on.
QUICK DRYING No offensive paint odor. Freshly painted room will be ready to use in less than 1 hour.

SEE WARDS FOR WALLPAPER—OVER 400 PATTERNS!

WURLITZER
A magnificent piano. Many lovely styles and finishes to choose from.
LOUIS R. MANN
PIANO CO.
120 No. 7th



Have Fun in the Sun...

BUT FIRST give your eyes the glare protection they need. Wear **CALOBAR SUN GLASSES**. Summertime is the hardest season of the year on your eyes... your vision is priceless, guard it well. **CALOBAR SUN GLASSES** are available in your prescription, with or without bifocals.

Choose from a wide selection of fashion frames. Including attractive rattan trimmed, candy striped and many others. Stop in soon—no appointment necessary.

Dr. Noles
optometrists

Doctors Sid G. Niles, Omar J. Niles, Alexander, Brower, Leitner and Wesseler

Montgomery Ward
9th and Pine Phone 3188

WARDS Certified EXCELON RUBBER BASE FLAT PAINT 75-4475 BUDDING GREEN SUPREME QUALITY

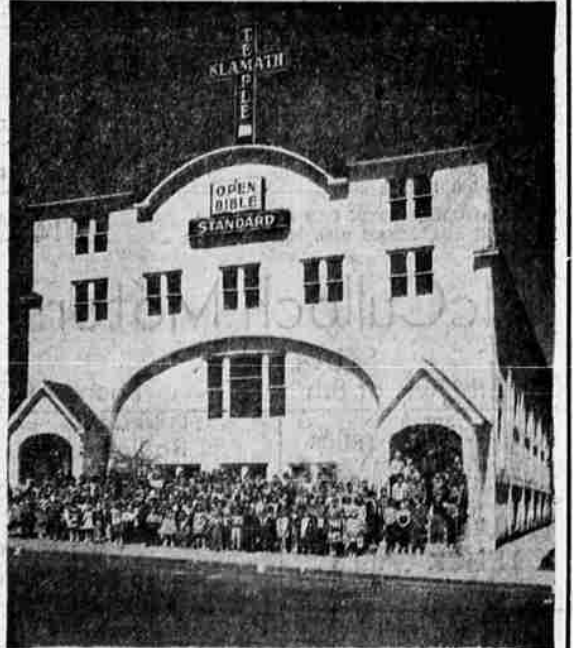
WHY PAY MORE PER GALLON?
FOR TOP QUALITY RUBBER-BASE PAINT,
Wards Excelon 4.29 Gallon

One of the finest rubber-base flat wall paints on the market—yet Wards Excelon costs you less per gallon than most other nationally advertised finishes. Excelon costs less in the long run too because it lasts for years—gives walls and woodwork a lovely soft finish that stands up under repeated scrubbing. Excelon goes on easily, dries quickly. Choice of 8 soft pastel-deep tones available for slightly more per gallon. Visit Wards today—see our line of fine quality paints and supplies.

PRACTICAL Long-lasting beauty—can be washed repeatedly. Excellent for walls, woodwork, ceilings.
READY-MIXED Comes to you ready to apply—no need to thin or mix. Just stir, then brush or roll it on.
QUICK DRYING No offensive paint odor. Freshly painted room will be ready to use in less than 1 hour.

SEE WARDS FOR WALLPAPER—OVER 400 PATTERNS!

ATTENTION! BOYS AND GIRLS



PICTURE OF PREVIOUS VACATION BIBLE SCHOOL
DAILY VACATION BIBLE SCHOOL AT KLAMATH TEMPLE
1007 PINE ST.
BEGINNING MONDAY JULY 21 THROUGH AUGUST 1
CLASSES FROM 9:00 A.M. TO 12 DAILY
COME... BRING A FRIEND
For Transportation Phone 6325 or 6359