



ARTURO LUCERO

## Willard Hotel's New Chef Tells Of High Aspirations

By WALLACE MYERS  
A husky, handsome young man began working and dreaming in the Willard Hotel kitchen yesterday; he's Arturo Lucero, 38-year-old American of Italian blood.

His work is as the Willard's new chef. His dream is of becoming the world's greatest food artist. On that latter count, Arturo is extremely modest. He speaks of world-renowned chefs with sincere reverence but he can't hide his bubbling ambition to become as famous as any of them.

At 38, Arturo has had 22 years experience, 10 of those years as the protégé and later assistant to Chef Maurice Pierre Caudert, for-

merly of the Santa Barbara Billmore and now chef at Southern California's famed Del Monte Hotel.

When Caudert was satisfied that his young assistant was accomplished enough to stand on his own two feet, he gave Arturo his blessing and the young chef took over as head man at Santa Barbara's picturesque Talk of the Town restaurant. From there he advanced to Santa Barbara's Marmonte Hotel as head chef and two years ago he moved to the Rogue Valley Country Club at Medford.

That's where Lee Scarlet, Willard manager found him and after several months of dickering managed to coax Arturo to Klamath Falls.

Arturo is an avowed disciple of the continental style and would like to do his menus entirely in French but will content himself for the time being with slipping in a touch of French here and there.

As soon as he can make arrangements, Arturo will bring his wife and three children here from Medford.

Come to think of it, this stupid reporter forgot to ask Arturo who rules the kitchen in his own home!

## Judge Refuses Strike Action

PORTLAND (AP)—Federal Judge Gus Solomon Wednesday refused to ask "federal officials to act as strikebreakers" in a dispute between the Columbia River Packers Association and the Pacific Far East Lines.

The line's ship, Contest, loaded with 1,264 tons of tuna from Japan, recently docked at Astoria. The Sailors Union of the Pacific picketed the ship. The packers' suit, which was dismissed Wednesday, asked the court to order the unloading of the ship.

Judge Solomon pointed out that the packers' dispute was with longshoremen who refused to cross the picket line, not with the shipping firm.

He advised the packers to name the union a party to the dispute if it wanted to bring the matter to court again. He said that the present suit, was "in effect asking federal officials to act as strikebreakers."

**PARSONS WELDING and REPAIR**  
Merrill Highway  
**CLOSED INDEFINITELY**  
due to the untimely death of Mr. Parsons.

**STOCK SALE**  
WASHINGTON (AP)—The Federal Power Commission Wednesday was asked by the Mountain States Power Co. of Albany, Ore., for permission to sell 200,000 shares of stock.

# Truman Approves New GI Bill For Veterans Of Korean War

WASHINGTON (AP)—President Truman has signed a bill to help GI's released since the start of the Korean War to re-establish themselves in civilian life.

The benefits are much the same as those granted to veterans after World War II, but there are some important differences.

The act provides the new veterans with money for education and training, mustering out pay, unemployment payments of \$26 a week up to a total of 26 weeks, and financial support for home and business loans.

The bill was one of 37 Truman signed Wednesday while in Walter Reed Hospital for a checkup.

The program is expected to cost about one billion dollars a year. The number of eligible veterans on May 31 was 870,000 and the Veterans Administration said the total is growing daily.

To be eligible a veteran must have served 90 days or more. The discharge must be other than dishonorable.

The biggest change from the World War II GI Bill is in the method of handling payments and in the type of schools veterans may attend. Congress wrote these in as a means of avoiding abuses under the earlier program.

Instead of making payments to the schools for the veteran, the government will provide the veteran with funds to pay his own tuition fee, buy books and handle his living expenses.

The ex-GI can go part time or full time to any school on a list approved by the VA or state agencies.

For each day of military service, a veteran is entitled to 1 1/2 days of education up to a maximum of 36 months. However, a veteran who qualified for training under the World War II measure and served after the Korean War started, may have a maximum of 48 months training.

Payments range for full time students from \$110 a month if a veteran has no dependents, to \$135 if he has one dependent and to \$160 if he has more than one dependent.

A veteran who chooses on-the-job training will receive \$70 a month if he has no dependents, \$85 if one dependent and \$105 if more than one dependent.

House or business loans are under the same regulations as for World War II veterans.

The act provides mustering out pay for all services below the rank of major or lieutenant command-

have served 90 days or more. The discharge must be other than dishonorable.

The biggest change from the World War II GI Bill is in the method of handling payments and in the type of schools veterans may attend. Congress wrote these in as a means of avoiding abuses under the earlier program.

Instead of making payments to the schools for the veteran, the government will provide the veteran with funds to pay his own tuition fee, buy books and handle his living expenses.

The ex-GI can go part time or full time to any school on a list approved by the VA or state agencies.

For each day of military service, a veteran is entitled to 1 1/2 days of education up to a maxi-

um of 36 months. However, a veteran who qualified for training under the World War II measure and served after the Korean War started, may have a maximum of 48 months training.

Payments range for full time students from \$110 a month if a veteran has no dependents, to \$135 if he has one dependent and to \$160 if he has more than one dependent.

A veteran who chooses on-the-job training will receive \$70 a month if he has no dependents, \$85 if one dependent and \$105 if more than one dependent.

House or business loans are under the same regulations as for World War II veterans.

The act provides mustering out pay for all services below the rank of major or lieutenant command-

er on the following scale: For 60 days active duty and ser-

vice outside the U. S. or in Alaska, the U. S., \$200; less than 60 days active duty within \$100.

er on the following scale: For 60 days active duty and ser-

vice outside the U. S. or in Alaska, the U. S., \$200; less than 60 days active duty within \$100.

er on the following scale: For 60 days active duty and ser-

vice outside the U. S. or in Alaska, the U. S., \$200; less than 60 days active duty within \$100.

er on the following scale: For 60 days active duty and ser-

vice outside the U. S. or in Alaska, the U. S., \$200; less than 60 days active duty within \$100.

er on the following scale: For 60 days active duty and ser-

vice outside the U. S. or in Alaska, the U. S., \$200; less than 60 days active duty within \$100.

er on the following scale: For 60 days active duty and ser-

vice outside the U. S. or in Alaska, the U. S., \$200; less than 60 days active duty within \$100.

er on the following scale: For 60 days active duty and ser-

vice outside the U. S. or in Alaska, the U. S., \$200; less than 60 days active duty within \$100.

er on the following scale: For 60 days active duty and ser-

vice outside the U. S. or in Alaska, the U. S., \$200; less than 60 days active duty within \$100.

er on the following scale: For 60 days active duty and ser-

vice outside the U. S. or in Alaska, the U. S., \$200; less than 60 days active duty within \$100.

er on the following scale: For 60 days active duty and ser-

vice outside the U. S. or in Alaska, the U. S., \$200; less than 60 days active duty within \$100.

er on the following scale: For 60 days active duty and ser-

vice outside the U. S. or in Alaska, the U. S., \$200; less than 60 days active duty within \$100.

er on the following scale: For 60 days active duty and ser-

vice outside the U. S. or in Alaska, the U. S., \$200; less than 60 days active duty within \$100.

er on the following scale: For 60 days active duty and ser-

vice outside the U. S. or in Alaska, the U. S., \$200; less than 60 days active duty within \$100.

er on the following scale: For 60 days active duty and ser-

vice outside the U. S. or in Alaska, the U. S., \$200; less than 60 days active duty within \$100.

er on the following scale: For 60 days active duty and ser-

vice outside the U. S. or in Alaska, the U. S., \$200; less than 60 days active duty within \$100.

er on the following scale: For 60 days active duty and ser-

vice outside the U. S. or in Alaska, the U. S., \$200; less than 60 days active duty within \$100.

er on the following scale: For 60 days active duty and ser-

vice outside the U. S. or in Alaska, the U. S., \$200; less than 60 days active duty within \$100.

er on the following scale: For 60 days active duty and ser-

vice outside the U. S. or in Alaska, the U. S., \$200; less than 60 days active duty within \$100.

er on the following scale: For 60 days active duty and ser-

vice outside the U. S. or in Alaska, the U. S., \$200; less than 60 days active duty within \$100.

er on the following scale: For 60 days active duty and ser-

vice outside the U. S. or in Alaska, the U. S., \$200; less than 60 days active duty within \$100.

er on the following scale: For 60 days active duty and ser-

vice outside the U. S. or in Alaska, the U. S., \$200; less than 60 days active duty within \$100.

er on the following scale: For 60 days active duty and ser-

vice outside the U. S. or in Alaska, the U. S., \$200; less than 60 days active duty within \$100.

er on the following scale: For 60 days active duty and ser-

vice outside the U. S. or in Alaska, the U. S., \$200; less than 60 days active duty within \$100.

er on the following scale: For 60 days active duty and ser-

vice outside the U. S. or in Alaska, the U. S., \$200; less than 60 days active duty within \$100.

er on the following scale: For 60 days active duty and ser-

vice outside the U. S. or in Alaska, the U. S., \$200; less than 60 days active duty within \$100.

er on the following scale: For 60 days active duty and ser-

vice outside the U. S. or in Alaska, the U. S., \$200; less than 60 days active duty within \$100.

er on the following scale: For 60 days active duty and ser-

vice outside the U. S. or in Alaska, the U. S., \$200; less than 60 days active duty within \$100.

er on the following scale: For 60 days active duty and ser-

vice outside the U. S. or in Alaska, the U. S., \$200; less than 60 days active duty within \$100.

er on the following scale: For 60 days active duty and ser-

vice outside the U. S. or in Alaska, the U. S., \$200; less than 60 days active duty within \$100.

er on the following scale: For 60 days active duty and ser-

vice outside the U. S. or in Alaska, the U. S., \$200; less than 60 days active duty within \$100.

er on the following scale: For 60 days active duty and ser-

vice outside the U. S. or in Alaska, the U. S., \$200; less than 60 days active duty within \$100.

er on the following scale: For 60 days active duty and ser-

vice outside the U. S. or in Alaska, the U. S., \$200; less than 60 days active duty within \$100.

er on the following scale: For 60 days active duty and ser-

vice outside the U. S. or in Alaska, the U. S., \$200; less than 60 days active duty within \$100.

er on the following scale: For 60 days active duty and ser-

vice outside the U. S. or in Alaska, the U. S., \$200; less than 60 days active duty within \$100.

er on the following scale: For 60 days active duty and ser-

vice outside the U. S. or in Alaska, the U. S., \$200; less than 60 days active duty within \$100.

er on the following scale: For 60 days active duty and ser-

vice outside the U. S. or in Alaska, the U. S., \$200; less than 60 days active duty within \$100.

er on the following scale: For 60 days active duty and ser-

vice outside the U. S. or in Alaska, the U. S., \$200; less than 60 days active duty within \$100.

er on the following scale: For 60 days active duty and ser-

vice outside the U. S. or in Alaska, the U. S., \$200; less than 60 days active duty within \$100.

er on the following scale: For 60 days active duty and ser-

vice outside the U. S. or in Alaska, the U. S., \$200; less than 60 days active duty within \$100.

**AIR FOAM RUBBER**  
A complete stock now on hand. All widths and thickness cut to your demands.  
Klamath Falls ARMY STORE  
320 So. 6th

**WURLITZER**  
A magnificent piano. Many lovely styles and finishes to choose from.  
LOUIS R. MANN  
PIANO CO.  
120 No. 7th

**PUBLISHER FREED**  
KENNEWICK (AP)—A charge that Publisher Glenn C. Lee violated a state law by soliciting signatures in the Tri-City Herald, for a school board recall petition was dismissed Wednesday. Justice of the Peace John Dellere of Benton City found the evidence insufficient.

9th and Pine

Montgomery Ward

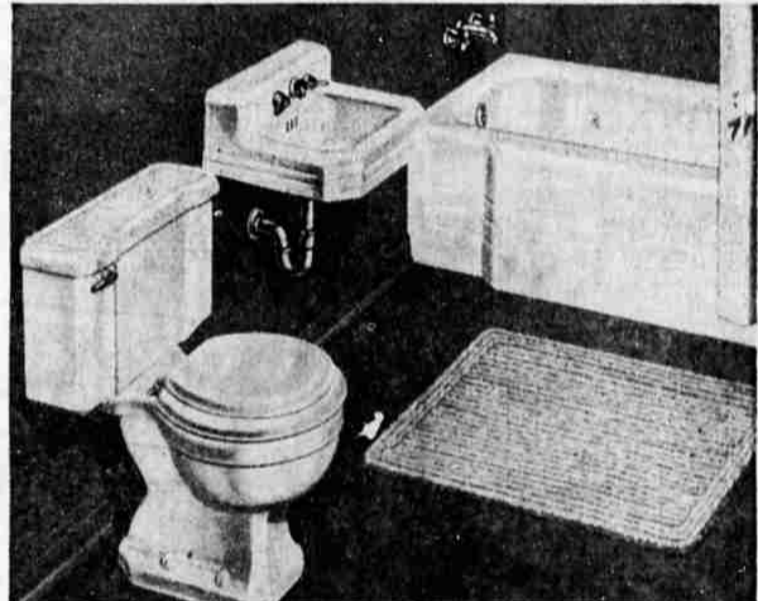
Phone 3188

## EXPERT INSTALLATION

No Money Down

Use Wards installation service. Experienced union tradesmen will handle the whole job for you correctly and at low cost. No money down, up to 3 years to pay on FHA terms.

9:00 to 5:30 DAYLIGHT TIME



REG. 61.95  
**CAST-IRON BATH UNIT**  
179.15

Porcelain-enameled cast iron lavatory and 5-ft. tub, china closet. All resist stains, clean easily. Closet is fastest, quietest type made—uses least water. All faucets, plugs, fittings and seat included.

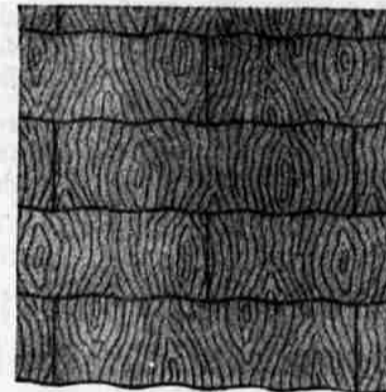
TUB ..... 84.50  
CLOSET ..... 43.95  
LAVATORY 27.95



**FIREPROOF ASBESTOS SIDING**

Installed 14.95 100 sq. ft.

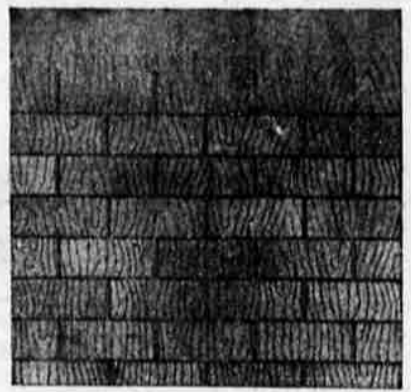
A modern, straight-edge shingle in a selection of rich colors or white. Never need painting. Easy to apply because they are self-aligning and self-spacing. Nail holes are pre-drilled at factory.



**WAVY EDGE ASPHALT SIDING**

Low as \$5 Monthly\*

Hard ceramic granules imbedded in weather-defying asphalt. Self-aligning, self-spacing. Gray-white. \*Wards will arrange expert installation at low cost. FHA terms, no money down, up to 3 years to pay.



**WARDS THICK-TAB SHINGLES**

Low as \$5 Mo., installed\*

Asphalt roofing shingles with extra layer of asphalt on exposed surface. Ceramic granules retain color. Available in 8 colors. \*Wards will arrange expert labor at low cost. FHA terms, no money down, 3 years to pay.

# Roseburg

We offer the best possible downtown heavy foot traffic, walk-in location, completely equipped with an ICE CREAM and SANDWICH man's dream. The premises are exceptionally well-suited by shape and size, and very well-lighted to induce a heavy customer-flow to the cool, well-decorated interior with a minimum of work steps and help. Six years remain on the lease, with renewal privileges on the 1500 sq. ft. floor space.

All equipment is modern and of the latest type, and it is all included with no exceptions—right down to the mop. We will gladly show you the inventory list, which includes one 5-rod mixer, 18 holes of cabinet storage, 60-gal. hardener and dispenser, complete fountain and heavy duty grill, Coca-Cola dispensers, etc. A p r o x i m a t e l y \$400.00 stock will be extra.

This owner is enjoying a good business and making money. We can assure you there are no hidden reasons for selling, and we invite a thorough investigation.

This clean, year-around well-established opening in Oregon's busiest city, and the county seat, will give you complete independence and financial security.

The owner must have made money or he could not afford to sacrifice all this for the amazingly low price of \$9500.00. This thriving business is worth twice this amount, so the owner is rightfully asking \$7500.00 down payment. (No trades or trade-ins).



IT'S A SCORCHER!

100 DEGREES HOT!  
What Better Business Than ICE CREAM?

**VALLEY REAL ESTATE**

115 WEST CASS ST. DIAL 3-4055  
ROSEBURG, OREGON



**BLOWN-IN ROCK WOOL**

Installed \$5 Mo.

Economical, fireproof insulation installed by experts. Will not deteriorate.

COME IN OR MAIL COUPON TODAY  
MONTGOMERY WARD

9th and Pine Klamath Falls, Oregon

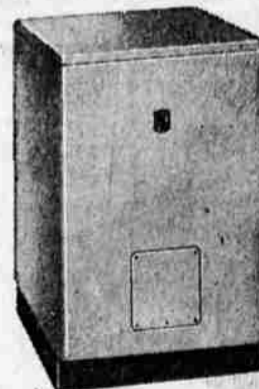
I would like, without obligation, a free estimate on installing the following items in my home:

( ) Bath outfit ( ) Kitchen cabinets ( ) Roofing  
( ) Water heater ( ) Wall tile ( ) Siding  
( ) Water system ( ) Millwork ( ) Insulation  
( ) Heating unit ( ) Fan or cooler ( ) Gutters

NAME.....

ADDRESS.....

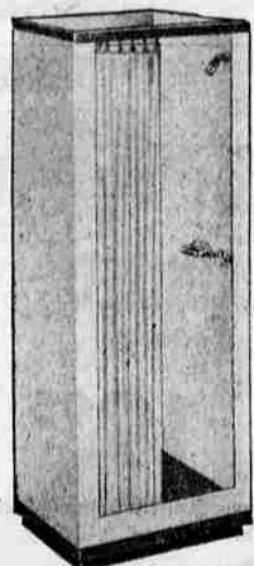
TOWN.....PHONE.....



**TABLE TOP WATER HEATER**

30-gal. 124.95 Electric

Standard height of sinks and kitchen cabinets—36 inches. Porcelain enamel top provides extra work space. All connections are accessible from the front. Sold under 10-yr. Protection Plan.



**SHOWER CABINET**

58.95

Low-cost, well-built unit makes ideal extra bath for garage, basement. Gray porcelain-enameled floor resists stains, acids—cleans easily. Husky steel walls have baked-on white enamel finish, resist rust. Absolutely water tight. With plastic curtain, rings, chrome plated fittings.