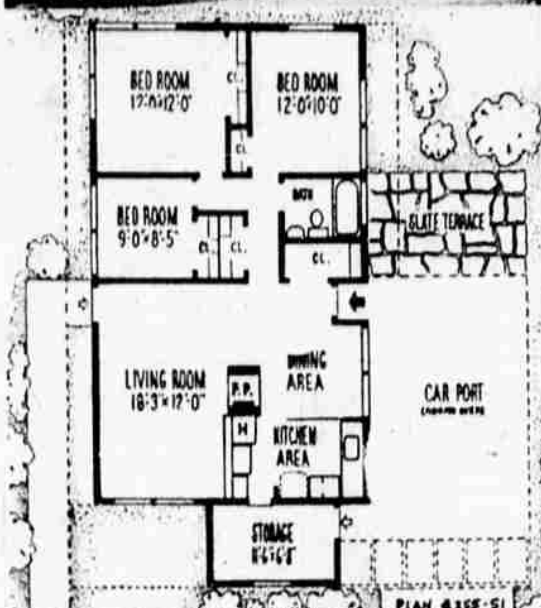


HOMES FOR AMERICANS



A LOW-COST, three-bedroom house with a two-way fireplace and attached car-port in modern style. This plan 255-51 by A. H. Salkowits, architect, 37-60 82nd St., Jackson Heights, N. Y., covers an area of 1,080 square feet with storage room, which replaces basement. This house is being built and sold by Irving Warfield at Syosset, L. I., for \$9,990 on lots 70 x 100. Exterior is covered with vertically striated colored asbestos. Kitchens are finished in knotty pine. Roofs are asphalt shingles. Bathrooms are tiled and picture windows are of double-pane insulating glass.

[Further information and plans available from architect]

Grass Contest Judging Due

LAKEVIEW — Judging to determine which Lake County rancher or farmer shall be the winner of the 1951 edition of the five-year county-wide range improvement program, and which will represent Lake County in the Portland Chamber of Commerce "Grass Is Gold" contest will soon get under way as a result of a meeting held Thursday, July 3, by the Lake County Chamber of Commerce's agriculture committee, of which Elgin Cornett is chairman.

For winners of the state divisions. The county contest awards lag one year behind the range improvement work because the committee wishes to give improvements one year in order to study results. The 1948 contest was won by C.W. Ogle and Son, who won a grain-grass drill. The 1950 contest was won by Dan Schumacher, who received \$200 worth of grass seed. In 1951 when Schumacher was named winner of the 1950 county contest, he was also entered as Lake County's representative in the 1951 Grass Is Gold contest and he won second place in the state division.

FIVE KILLED
LA ROCHELLE, France (AP) — Five American soldiers were killed and four others seriously injured Friday night when their cars crashed into a tree alongside a highway southeast of here.

INVESTMENT PROPERTY FOR SALE
Return on Your Investment Very Good — Priced at \$25,000 for quick sale.
120 North 10th

Surprise For Pat Nixon

By RUTH COWAN
CHICAGO (AP) — Mrs. Richard Nixon struggled through the crowds at a huge reception last Sunday to meet the Eisenhowers. Now, just five days later, she and her husband are sharing the political spotlight with them.

The slim, attractive wife of the junior senator from California said she truly is "tremendously surprised." She never dreamed the Republican convention would pick her husband as the vice-presidential nominee on the ticket headed by Gen. Eisenhower.

"I heard a report last Wednesday that he might be considered," she told reporters, "but I didn't take it seriously—and neither did Dick."

During the interlude that followed the voting which nominated Eisenhower on the first ballot, Mrs. Nixon and two friends left the convention hall to get a sandwich.

She got the sandwich and then some: "We were watching a Grade D movie on television. Suddenly a commentator cut in with a news flash that my husband was being nominated. I had just taken one bite of my sandwich. I dropped it and rushed back to the hall."

The former Patricia Ryan, Mrs. Nixon was born in Ely, Nev., but grew up in Whittier, Calif.

A strawberry blonde, she is 5-foot-5 inches tall and weighs about 115 pounds.

The Nixons have two children, Patricia, 6, and Julie, 4.

Civil Defense Stresses Medical Division Work

(This is another in a series of articles on civil defense operations as organized in Klamath County released through the publicity division of the local program.)

By MALCOLM EFLEY JR.
Probably one of the most necessary groups in an emergency or disaster is the medical division, and the Klamath County civil defense program has prepared itself well in that respect.

Under the direction of Dr. Gerald Cosgrove, the division has two immediate objectives:

1. It is to take care of any local disaster in organized, orderly and efficient fashion with a minimum loss of life and disability to the injured victims.

2. It is to have trained personnel in medical units available to move to other disaster areas in the state.

For local disasters, Cosgrove explains the way his division is to function.

Plans are underway to have eight or 10 scattered emergency first aid posts in the city and suburban areas. Two emergency hospitals—separate from existing hospitals—and several large shelters for mass care of minor injuries. The latter would be run by welfare personnel.

In general, first aid posts are churches, schools, lodge halls or spacious buildings with water, lavatory and kitchen facilities. Emergency hospitals and mass care centers are larger buildings with similar facilities.

Dr. Cosgrove notes the buildings as mentioned are distributed about town so one single catastrophe is not likely to damage the bulk of them.

On a regional basis, Klamath County has an important role, too. Dr. Cosgrove reports the state civil defense officials have requested Klamath County organize seven mobile first aid teams and two emergency hospital units. Each of these would consist of doctors, dentists, nurses, pharmacists, clergy, nurses' aids, trained first aid personnel and clerical and other assistants such as litter bearers and ambulance drivers.

Says the doctor: "Supplies for such teams will have to come from existing medical supplies available in the county, although eventually federal, state and perhaps county funds may be made available for stockpiling necessary supplies."

"Such stockpiling," he continues, "will be set up first near the cities designated as prime target areas, and only later at lesser target targets."

Health plans are closely interwoven in the county's other civil defense groups—welfare, communications, personnel procurement, public information—and Dr. Cosgrove gives as an example the provision by the transportation section of vehicles necessary for use as emergency ambulances and for moving medical supplies and personnel.

Laundry trucks, he said, would probably function well as emergency ambulances. The personnel section would register volunteer civil defense workers and assign them as assistants to aid teams and hospital units.

Dr. Cosgrove has under his leadership a committee covering all aspects of the medical division. That includes dental, nursing, pharmaceutical, mortuary, laboratory and ambulance personnel.

An important and not to be forgotten phase of the medical division's job is that of controlling communicable disease, as well as training in resistance to chemical, bacteriological and radiological warfare.

4-H Camp Set For July 27

LAKEVIEW — The annual 4-H Club summer camp at Cottonwood Meadows will be open July 27, and run for one week. Registration is to be completed by July 1 in order that planning can be made according to the number expected in camp.

Sponsored by the 4-H Leaders Association, the camp will provide a full schedule of activities. The fee will be \$10 per child for the seven day period.

Parents and friends of 4-H are asked to go the camp early July 27 to help set it up. The program will begin with supper that evening. Lee Hanson, club agent, has sent letters to all parents of 4-H members, urging early registration and help in setting up the camp. August 1 will be visitors night and a special campfire program will be arranged.

The level of the Caspian Sea has risen and fallen sharply several times within historic times.

Printer Strike Strikes Ireland

DUBLIN, Ireland (AP) — Dublin went without daily Irish newspapers for the fourth day Monday with no sign of a settlement of a printers' strike.

Three morning newspapers and two evening editions suspended publication Friday when 4,000 printers struck for a 30 shilling (\$4.20) a week pay increase.

The printers have been offered a 12 shilling six pence (\$1.75) week increase, but the proposal was rejected.

On a regional basis, Klamath County has an important role, too. Dr. Cosgrove reports the state civil defense officials have requested Klamath County organize seven mobile first aid teams and two emergency hospital units. Each of these would consist of doctors, dentists, nurses, pharmacists, clergy, nurses' aids, trained first aid personnel and clerical and other assistants such as litter bearers and ambulance drivers.

Says the doctor: "Supplies for such teams will have to come from existing medical supplies available in the county, although eventually federal, state and perhaps county funds may be made available for stockpiling necessary supplies."

"Such stockpiling," he continues, "will be set up first near the cities designated as prime target areas, and only later at lesser target targets."

Health plans are closely interwoven in the county's other civil defense groups—welfare, communications, personnel procurement, public information—and Dr. Cosgrove gives as an example the provision by the transportation section of vehicles necessary for use as emergency ambulances and for moving medical supplies and personnel.

Laundry trucks, he said, would probably function well as emergency ambulances. The personnel section would register volunteer civil defense workers and assign them as assistants to aid teams and hospital units.

Dr. Cosgrove has under his leadership a committee covering all aspects of the medical division. That includes dental, nursing, pharmaceutical, mortuary, laboratory and ambulance personnel.

An important and not to be forgotten phase of the medical division's job is that of controlling communicable disease, as well as training in resistance to chemical, bacteriological and radiological warfare.

Saddle Club Organized

MACDOEL — About 50 women turned out for an organizational meeting held here last week for a saddle club and emphasized horsemanship and sportsmanship.

Miss Doris Porterfield, JP Ranch, Dorris, was elected president; Mrs. Marie Tharp, vice president; Miss Barbara Anderson, secretary; Mrs. Junilia Stevenson, treasurer; Mrs. Margaret Stevenson was appointed publicity chairman.

A committee was appointed to draft by-laws to be read at a meeting set for tomorrow at 1 p.m. at the hotel. Members need not own their own mounts, but should be able to acquire them when the occasion demands.

President Porterfield has extended an invitation to all interested women to join, and to be at the next meeting. All signing up at that time automatically become charter members.

Arnold, Klamath Falls Saddle Club was organized according to the saddle club and emphasized horsemanship and sportsmanship.

Miss Doris Porterfield, JP Ranch, Dorris, was elected president; Mrs. Marie Tharp, vice president; Miss Barbara Anderson, secretary; Mrs. Junilia Stevenson, treasurer; Mrs. Margaret Stevenson was appointed publicity chairman.

A committee was appointed to draft by-laws to be read at a meeting set for tomorrow at 1 p.m. at the hotel. Members need not own their own mounts, but should be able to acquire them when the occasion demands.

President Porterfield has extended an invitation to all interested women to join, and to be at the next meeting. All signing up at that time automatically become charter members.

Printer Strike Strikes Ireland

DUBLIN, Ireland (AP) — Dublin went without daily Irish newspapers for the fourth day Monday with no sign of a settlement of a printers' strike.

Three morning newspapers and two evening editions suspended publication Friday when 4,000 printers struck for a 30 shilling (\$4.20) a week pay increase.

The printers have been offered a 12 shilling six pence (\$1.75) week increase, but the proposal was rejected.

On a regional basis, Klamath County has an important role, too. Dr. Cosgrove reports the state civil defense officials have requested Klamath County organize seven mobile first aid teams and two emergency hospital units. Each of these would consist of doctors, dentists, nurses, pharmacists, clergy, nurses' aids, trained first aid personnel and clerical and other assistants such as litter bearers and ambulance drivers.

Says the doctor: "Supplies for such teams will have to come from existing medical supplies available in the county, although eventually federal, state and perhaps county funds may be made available for stockpiling necessary supplies."

"Such stockpiling," he continues, "will be set up first near the cities designated as prime target areas, and only later at lesser target targets."

Health plans are closely interwoven in the county's other civil defense groups—welfare, communications, personnel procurement, public information—and Dr. Cosgrove gives as an example the provision by the transportation section of vehicles necessary for use as emergency ambulances and for moving medical supplies and personnel.

Laundry trucks, he said, would probably function well as emergency ambulances. The personnel section would register volunteer civil defense workers and assign them as assistants to aid teams and hospital units.

Dr. Cosgrove has under his leadership a committee covering all aspects of the medical division. That includes dental, nursing, pharmaceutical, mortuary, laboratory and ambulance personnel.

Printer Strike Strikes Ireland

DUBLIN, Ireland (AP) — Dublin went without daily Irish newspapers for the fourth day Monday with no sign of a settlement of a printers' strike.

Three morning newspapers and two evening editions suspended publication Friday when 4,000 printers struck for a 30 shilling (\$4.20) a week pay increase.

The printers have been offered a 12 shilling six pence (\$1.75) week increase, but the proposal was rejected.

On a regional basis, Klamath County has an important role, too. Dr. Cosgrove reports the state civil defense officials have requested Klamath County organize seven mobile first aid teams and two emergency hospital units. Each of these would consist of doctors, dentists, nurses, pharmacists, clergy, nurses' aids, trained first aid personnel and clerical and other assistants such as litter bearers and ambulance drivers.

Says the doctor: "Supplies for such teams will have to come from existing medical supplies available in the county, although eventually federal, state and perhaps county funds may be made available for stockpiling necessary supplies."

"Such stockpiling," he continues, "will be set up first near the cities designated as prime target areas, and only later at lesser target targets."

Health plans are closely interwoven in the county's other civil defense groups—welfare, communications, personnel procurement, public information—and Dr. Cosgrove gives as an example the provision by the transportation section of vehicles necessary for use as emergency ambulances and for moving medical supplies and personnel.

Laundry trucks, he said, would probably function well as emergency ambulances. The personnel section would register volunteer civil defense workers and assign them as assistants to aid teams and hospital units.

Dr. Cosgrove has under his leadership a committee covering all aspects of the medical division. That includes dental, nursing, pharmaceutical, mortuary, laboratory and ambulance personnel.

Charlie Reed's SADDLERY will be CLOSED July 13 to August 1

Charlie Reed's SADDLERY will be CLOSED July 13 to August 1

Blitz Weinhard for me!
REFRESHING!

10, 20, 30, 50 YEAR OLD HOUSES LOOK "newly-built" overnight

No other method or material but PROTEXA-WALL can make an old house look new, NEW, N E W ! PROTEXA-WALL alone contains ACRYLIC... combines this wonderful discovery with special minerals and chemicals to form one of the finest siding materials ever developed.

Our 10-Year Guarantee Protects Your Investment
Every claim made for PROTEXA-WALL can be demonstrated... and PROVED! This wonderful material carries an insured guarantee for TEN years by Krylon, Inc., whose liability is insured by one of America's leading casualty insurance companies.

New Walls Overnight
One application and the unbelievable beauty, durability and protection of PROTEXA-WALL is yours for ten years and more. Ten times thicker, more weather-resistant than a 2-coat paint job... yet PROTEXA-WALL costs little more than the finest paint job money can buy!

no other method or material like the **Protexa-Wall PROCESS**

phone or mail coupon NOW

KC PAINTING CO.
527 Walnut St.
Please send more information about Protexa-Wall:

NAME _____
ADDRESS _____
CITY _____ STATE _____ ZONE _____
STATE _____ PHONE _____

KC Painting Co. 527 Walnut Phone 5878

without painting! permanent protection without rebuilding insulates walls made by Krylon without repainting without carpenter or blueprints without maintenance costs saves 4 to 6 paint jobs won't crack or peel reduces street noises without carpenter or blueprints guaranteed for 10 years contains ACRYLIC indestructible beauty 10 times the protection of paint covers any exterior surface for all types of homes costs less than painting 9 rich colors NO MONEY DOWN ON FHA TERMS! 36 Months to Pay!

Want a Big Kiss, Mother?
Serve Your Family
Fresh Strawberries with WHIPPED CREAM

"I've told you a thousand times to throw away that ancient number list and look up numbers before you call!"... Keep your personal number list up-to-date by checking it with the latest directory... Pacific Telephone.

GRADE "A" WHIPPING CREAM

DISTRIBUTED LOCALLY BY CRATER LAKE DAIRY AND MEDO-LAND DAIRY

In hot weather there is nothing that can "GIVE A LIFT" to the entire family like delicious Grade "A" dairy foods, and the products made from them. ICE-COLD MILK, ICE CREAMS, fresh fruits with WHIPPED CREAM, and the many delicious dessert treats made with dairy foods, give energy with refreshment, and at economy costs far below today's average index.

KLAMATH BASIN GRADE "A" PRODUCERS Association

NO MONEY DOWN ON FHA TERMS! 36 Months to Pay!