

# Milk Outruns Population

Changes in milk utilization in the Portland milkshed between 1940 and 1950 have been analyzed by an Oregon State college research assistant and the results published as an experimental station circular of information 512.

Gordon A. Rowe, former cooperative employee of the U. S. department of agriculture and the OSC agricultural economics department, reports in the publication that population has outdistanced milk production in the west. He also notes that the sale of a greater proportion of fluid milk and ice cream has resulted in a shift from production of butter, cheese and evaporated milk.

He concludes that manufacturing plants within the Portland area will have to obtain milk from outside sources to maintain a full operating schedule.

A detailed report may be obtained by writing direct to OSC or calling at county extension offices for copies.

# Wilson New Angus Head

Earl Wilson, Malin, was named president of the Southern Oregon Angus Breeder's Association during a session recently held in Grants Pass.

Dr. Frank Freeburger, a Medford breeder, was named vice president, and Melvin Fiegl, Poe Valley Black and White Ranch, was named secretary-treasurer. The board of directors includes, besides the officers, Ben Hilton, Grants Pass; Gerald Klose, Grants Pass; Gerald West, Poe Valley; Dale West, Merrill; Alvin Cheyne, Spring Lake; and Lou Rafferty, Grants Pass.



EARL WILSON

# Broilers Net 77c Profit

An up-to-date survey of broiler production costs on 17 Willamette valley farms has shown that farmers are getting only about 77 cents an hour for the labor they put into their broiler enterprises.

The report, prepared by M. H. Becker, assistant agricultural economist, shows that production costs on the 17 farms ranged from about 27 cents a pound to about 35 cents a pound. Out-of-pocket costs averaged about 26 1/2 cents a pound. This is the amount the producer must recover before he gets any return for his labor or the use of equipment and buildings.

Becker, in his survey, figured the cost of labor at \$1 an hour. On this basis, it cost the producers an average of nearly two cents an hour more to produce broilers than they received for them. Actually, the difference can be deducted from labor costs, leaving only 77 cents an hour as the average labor return.

Copies of the survey, which includes suggested formulas for determining broiler production costs, may be obtained by writing direct to OSC or asking at county extension offices for experiment station circular of information 512.

# SAVE TIME & MANPOWER with the Bale-Matic



BALES of uniform weight and size  
square corners  
tied with two wires  
that stay tied

# MINNIES ARE BETTER THAN EVER!

BYRON JOHNSON  
"Your Minneapolis-Moline Dealer"

Brilliant Sure-Stand Grass Seeders—Merrill Rakes  
Linton Cattle Chutes  
Tulare Bale Loaders—Cobay Manure Spreaders  
Iron Age Potato Planters and Diggers

Merrill-Lakeview Junction—Phone 9789  
Malin—Phone 309

# FARM NEWS

MALCOLM EPLEY, Jr.  
Farm Editor



# Klamath Guernseys Rate High in Club Registry

F. C. Adams, Adamsdale Guernsey Farm has made a Guernsey state champion record with his registered Guernsey cow, Santa Cruz Select's Damse. Her production of 14,436 pounds of milk and 822 pounds of butterfat is the highest Advanced Registry record in the state of Oregon made by a senior 4-year-old in the 365 days division.

The sire of this cow, Santa Cruz Holliston Select, owned by Wayne J. Peacock, Bakerfield, Calif., has 8 daughters and 1 son in the Performance Register of The American Guernsey Cattle Club.

Two registered Guernsey cows, also owned by Dr. F. C. Adams, Klamath Falls, have completed official Advanced Registry records that were supervised by the Oregon State College and reported to The American Guernsey Cattle Club for approval and publication.

In the 365 day division, Adamsdale Topay's Trudy, a 3-year-old, produced 11,330 pounds of milk and 654 pounds of butterfat. She is the daughter of the outstanding Guernsey sire, Chicoma Pernau, that has 1 son and 22 daughters in the Performance Register.

Adamsdale Graciful's Greta produced 10,402 pounds of milk and 529 pounds of butterfat milked two times daily for a ten-month period, as a senior 3-year-old. "Greta" is the daughter of the registered Guernsey sire, Bonnell Lindy, that has 8 daughters in the Performance Register of The American Guernsey Cattle Club.

A registered Guernsey cow, Daisy's Little Flower, owned by Mr. and Mrs. R. J. Hobson, Elsie, produced 13,300 pounds of milk and 628 pounds of butterfat in the 365 days division.

of butterfat into the country's breadbasket. This is according to the official Herd Improvement Registry record released by The American Guernsey Cattle Club. "Little Flower" was an 8-year-old and was milked for 365 days. Guernsey cows on official test have steadily increased production over the years. The average cow in the United States produces only about one half as much as the average purebred Guernsey on official test.

The sire of "Little Flower" is Repeater Don of Oak Park. Fifteen daughters of this bull are listed in the Performance Register of The American Guernsey Cattle Club.

This record was supervised by the Oregon State College. L. L. Lombard, Retsele Guernseys, Merrill, is the owner of two registered Guernseys that have recently completed Herd Improvement Registry production records according to a report from The American Guernsey Cattle Club.

Having been milked for 365 days, High Mowing Diamond Electra, a senior 3-year-old, produced 12,025 pounds of milk and 557 pounds of butterfat. Land o' Dreams Kings Linnetta, a junior 3-year-old, produced 8,529 pounds of milk and 523 pounds of butterfat, having been milked for 337 days.

"Diamond Electra" was sired by Foremost Diamond Jim, that has 23 sons and daughters in the Performance Register, while "Linnetta" was sired by McDonald Farms May King, that has 33 sons and daughters in the Performance Register of The American Guernsey Cattle Club.

# 4-H Summer Schools at OSC Attracts 1877 Youngsters

The 1877 boys and girls attending the 1952 4-H summer school at Oregon State college will wind up the 37th annual session in a high mood Thursday evening, June 26, with square dancing and party games in the Coliseum and ballroom dancing in the Memorial Union.

Co-presidents this year were Betty Stelmacher, 18, Albany, and Dave Estergard, 17, Harrisburg. By coincidence, both are sheep raisers, with Betty specializing in registered Southdowns and Romneys, and Dave raising registered Suffolk.

Dozens of other 4-H club members received leadership experience by serving as presidents of the 37 housing units, presiding over general assemblies, and taking part in other programs. Other youngsters displayed musical dancing, and dramatic talents in an amateur show and in the annual 4-H Radio Revue which was broadcast over KOAC.

Many Corvallis residents attending the 4-H Sunday morning services in the coliseum. Dr. James C. Miller, of the Good Citizenship Foundation, Portland, gave the sermon and a special 4-H choir provided music.

At one assembly, a colorful, hand woven, hand-embroidered tablecloth was presented to the 4-Hers, as representatives of 4-Hers throughout the nation, by the children of Yugoslavia. Mrs. Mira Kovacic, one of 21 foreign home economists who attended a special 8-week extension short course at OSC, made the presentation. She explained that Yugoslavian youth feel a strong friendship for American children, thanks to the Toys for Yugoslavia collection that was made in this country shortly after the war.

The tablecloth will be temporarily loaned to the National 4-H Foundation for display in Washington, D. C.

# Kaiser Gypsum May Be Sold

OAKLAND, Calif. (AP) — Permanent Cement Company's board of directors Tuesday voted to purchase the Kaiser Gypsum Division of Henry J. Kaiser Co., subject to stockholder approval. The purchase price was reported unofficially to be about \$5,412,000.

Properties involved in the proposed purchase include:

# Russ Swipe U.S. Track-Type Tractor Design

Contrary to current popular opinion, the Russians' keen knowledge of engineering and mechanics has been revealed probably for the first time in research on a track-type tractor which is a metric copy of a well-known U.S. manufacturer's machine.

Two well-built Red tractors — the Stalnetz 80—were given detailed examination by the research department at Caterpillar Tractor Co. and were found to be copies of Caterpillar's D7 model.

J. M. Davies, research director, said, "In our opinion, they are a well engineered, well manufactured copy, reflecting Russian practices. Russian machine tools and the raw materials available to the Russians are of much better quality than we had expected."

The two Red tractors were captured in a battered condition by troops in Korea. Because the pair were obvious copies of a standard Caterpillar D7, the Army's Corps of Engineers asked Caterpillar to make an examination. The information has been restricted until only recently.

Caterpillar engineers believe the illegitimate cousin of their D7, Caterpillar's second largest track-type tractor, was copied from machines obtained by Russia under lend lease about ten years ago.

Concerning the metric dimensioning, Davies observed, "Considering all the parts which had to be changed, and also considering the

Inspection revealed these sobering facts:

1. The Reds redesigned the machine to fit more convenient metric dimensions — no mean engineering feat.

2. Appearance was unimportant. The parts are tough on the outside, but careful attention was given where part finish and close tolerances are needed. Anti-friction bearings are very good.

3. Although raw materials available differ slightly, metallurgy on the Red copy is very good.

4. The tractors probably were purchased on an assembly line basis similar to Caterpillar's.

Davies said, "These machines were a great surprise to us. They

are of much better quality than we had expected."

The two Red tractors were captured in a battered condition by troops in Korea. Because the pair were obvious copies of a standard Caterpillar D7, the Army's Corps of Engineers asked Caterpillar to make an examination. The information has been restricted until only recently.

Caterpillar engineers believe the illegitimate cousin of their D7, Caterpillar's second largest track-type tractor, was copied from machines obtained by Russia under lend lease about ten years ago.

Concerning the metric dimensioning, Davies observed, "Considering all the parts which had to be changed, and also considering the

Inspection revealed these sobering facts:

1. The Reds redesigned the machine to fit more convenient metric dimensions — no mean engineering feat.

2. Appearance was unimportant. The parts are tough on the outside, but careful attention was given where part finish and close tolerances are needed. Anti-friction bearings are very good.

3. Although raw materials available differ slightly, metallurgy on the Red copy is very good.

4. The tractors probably were purchased on an assembly line basis similar to Caterpillar's.

Davies said, "These machines were a great surprise to us. They

tolerances and fits of each of these parts had to be changed to metric standards, this is an achievement reflecting a slight engineering skill."

He said proof that the Russians understand the principle of part interchangeability was shown by the fact that the actual Russian Diesel tractor engine operated by Caterpillar for tests was assembled from parts from two separate machines.

In the opinion of Caterpillar metallurgists, the final Red product is just about what American manufacturers would have done if the same materials were available.

"The Russians know when to make them tough," Davies continued. "Hardness and toughness of their parts are about the same as we use."

He said Russian shop practices are quite different, however. Many of the finishes appear rough. From a casual inspection, their parts are not of as high quality.

"However, where close tolerances and good finishes are essential for satisfactory operation, the Russian part finish or tolerance is good," he said.

In effect, the prated model incorporated all the vast knowledge of Caterpillar engineers concerning track-type Diesel tractors. All the basic experience and knowledge that Caterpillar has applied to design was freely taken and cate-

fully adapted by the Red engineers. Davies said Caterpillar did not operate the complete tractor, but the researchers suspect that it would be more noisy and have a slightly shorter life than the Caterpillar machine.

He said, "We would criticize their manufacturing techniques on some parts and feel sure that the life of their machine would not be up to our standards. However, on the whole, we feel that it is a machine which would give satisfactory operation."

The Russian tractors have no provisions for a bulldozer blade or hydraulic lift for the blade, at least on the captured models, which were undoubtedly used to pull military equipment and supplies in Korea.

we use."

He said Russian shop practices are quite different, however. Many of the finishes appear rough. From a casual inspection, their parts are not of as high quality.

"However, where close tolerances and good finishes are essential for satisfactory operation, the Russian part finish or tolerance is good," he said.

In effect, the prated model incorporated all the vast knowledge of Caterpillar engineers concerning track-type Diesel tractors. All the basic experience and knowledge that Caterpillar has applied to design was freely taken and cate-

fully adapted by the Red engineers. Davies said Caterpillar did not operate the complete tractor, but the researchers suspect that it would be more noisy and have a slightly shorter life than the Caterpillar machine.

He said, "We would criticize their manufacturing techniques on some parts and feel sure that the life of their machine would not be up to our standards. However, on the whole, we feel that it is a machine which would give satisfactory operation."

The Russian tractors have no provisions for a bulldozer blade or hydraulic lift for the blade, at least on the captured models, which were undoubtedly used to pull military equipment and supplies in Korea.

we use."

He said Russian shop practices are quite different, however. Many of the finishes appear rough. From a casual inspection, their parts are not of as high quality.

"However, where close tolerances and good finishes are essential for satisfactory operation, the Russian part finish or tolerance is good," he said.

In effect, the prated model incorporated all the vast knowledge of Caterpillar engineers concerning track-type Diesel tractors. All the basic experience and knowledge that Caterpillar has applied to design was freely taken and cate-

fully adapted by the Red engineers. Davies said Caterpillar did not operate the complete tractor, but the researchers suspect that it would be more noisy and have a slightly shorter life than the Caterpillar machine.

He said, "We would criticize their manufacturing techniques on some parts and feel sure that the life of their machine would not be up to our standards. However, on the whole, we feel that it is a machine which would give satisfactory operation."

The Russian tractors have no provisions for a bulldozer blade or hydraulic lift for the blade, at least on the captured models, which were undoubtedly used to pull military equipment and supplies in Korea.

we use."

He said Russian shop practices are quite different, however. Many of the finishes appear rough. From a casual inspection, their parts are not of as high quality.

"However, where close tolerances and good finishes are essential for satisfactory operation, the Russian part finish or tolerance is good," he said.

In effect, the prated model incorporated all the vast knowledge of Caterpillar engineers concerning track-type Diesel tractors. All the basic experience and knowledge that Caterpillar has applied to design was freely taken and cate-

fully adapted by the Red engineers. Davies said Caterpillar did not operate the complete tractor, but the researchers suspect that it would be more noisy and have a slightly shorter life than the Caterpillar machine.

He said, "We would criticize their manufacturing techniques on some parts and feel sure that the life of their machine would not be up to our standards. However, on the whole, we feel that it is a machine which would give satisfactory operation."

The Russian tractors have no provisions for a bulldozer blade or hydraulic lift for the blade, at least on the captured models, which were undoubtedly used to pull military equipment and supplies in Korea.

we use."

He said Russian shop practices are quite different, however. Many of the finishes appear rough. From a casual inspection, their parts are not of as high quality.

"However, where close tolerances and good finishes are essential for satisfactory operation, the Russian part finish or tolerance is good," he said.

In effect, the prated model incorporated all the vast knowledge of Caterpillar engineers concerning track-type Diesel tractors. All the basic experience and knowledge that Caterpillar has applied to design was freely taken and cate-

fully adapted by the Red engineers. Davies said Caterpillar did not operate the complete tractor, but the researchers suspect that it would be more noisy and have a slightly shorter life than the Caterpillar machine.

He said, "We would criticize their manufacturing techniques on some parts and feel sure that the life of their machine would not be up to our standards. However, on the whole, we feel that it is a machine which would give satisfactory operation."

The Russian tractors have no provisions for a bulldozer blade or hydraulic lift for the blade, at least on the captured models, which were undoubtedly used to pull military equipment and supplies in Korea.

we use."

He said Russian shop practices are quite different, however. Many of the finishes appear rough. From a casual inspection, their parts are not of as high quality.

"However, where close tolerances and good finishes are essential for satisfactory operation, the Russian part finish or tolerance is good," he said.

In effect, the prated model incorporated all the vast knowledge of Caterpillar engineers concerning track-type Diesel tractors. All the basic experience and knowledge that Caterpillar has applied to design was freely taken and cate-

fully adapted by the Red engineers. Davies said Caterpillar did not operate the complete tractor, but the researchers suspect that it would be more noisy and have a slightly shorter life than the Caterpillar machine.

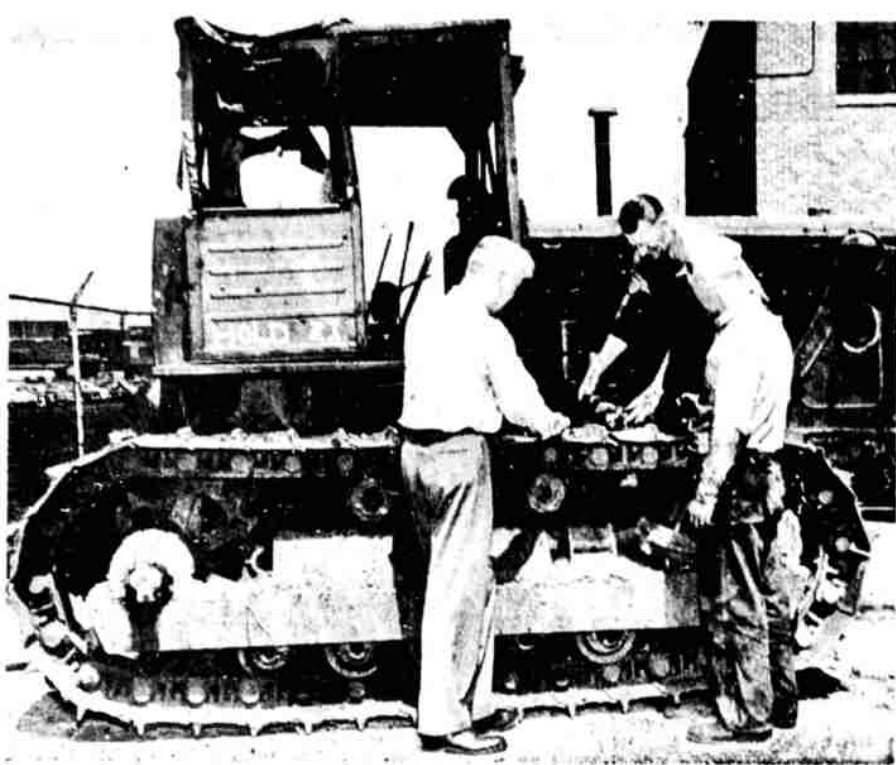
He said, "We would criticize their manufacturing techniques on some parts and feel sure that the life of their machine would not be up to our standards. However, on the whole, we feel that it is a machine which would give satisfactory operation."

The Russian tractors have no provisions for a bulldozer blade or hydraulic lift for the blade, at least on the captured models, which were undoubtedly used to pull military equipment and supplies in Korea.

we use."

He said Russian shop practices are quite different, however. Many of the finishes appear rough. From a casual inspection, their parts are not of as high quality.

"However, where close tolerances and good finishes are essential for satisfactory operation, the Russian part finish or tolerance is good," he said.



RUSSIAN ENTERPRISE—J. M. Davies, director of research for Caterpillar, examines a metric copy of a Caterpillar D-7 track-type tractor with Mechanics Harold Dahl and Frederick Kaiser in Peoria. The tractor is a Stalnetz 80—built on a metric scale by the Reds and was captured in Korea.

# FPC To Rule On Canada Gas

WASHINGTON (AP) — A Federal Power Commission examiner was to rule Wednesday on whether to call a recess in a hearing on the applications of six firms to import natural gas from Canada.

Examiner Glen Law said the recess might be called pending a decision on a motion to deny the applications.

The motion was made Tuesday.

Companies seeking permits to sell Canadian gas in the United States were the Westcoast Transmission Co., Inc., Trans-Northwest Gas Co., Inc., Northwest Natural Gas Co., Pacific Northwest Pipeline Corp., Glacier Gas Co., and Northern Natural Gas of Omaha, Neb.

The first five companies propose importing the gas to the Pacific Northwest, Northern Natural hopes to tap the Midwest market.

SMOKERS  
PORTLAND (AP) — Post office clerks want to be able to smoke at work and in first class offices they want air conditioning.

Resolutions asking that were adopted by the Oregon Federation of Postoffice Clerks which met here Sunday. They asked that the present ban on smoking be lifted in all postoffice, although the air condition request was limited to those of the first class.

RESOLUTIONS ASKING THAT WERE ADOPTED BY THE OREGON FEDERATION OF POSTOFFICE CLERKS WHICH MET HERE SUNDAY. THEY ASKED THAT THE PRESENT BAN ON SMOKING BE LIFTED IN ALL POSTOFFICE, ALTHOUGH THE AIR CONDITION REQUEST WAS LIMITED TO THOSE OF THE FIRST CLASS.

RESOLUTIONS ASKING THAT WERE ADOPTED BY THE OREGON FEDERATION OF POSTOFFICE CLERKS WHICH MET HERE SUNDAY. THEY ASKED THAT THE PRESENT BAN ON SMOKING BE LIFTED IN ALL POSTOFFICE, ALTHOUGH THE AIR CONDITION REQUEST WAS LIMITED TO THOSE OF THE FIRST CLASS.

RESOLUTIONS ASKING THAT WERE ADOPTED BY THE OREGON FEDERATION OF POSTOFFICE CLERKS WHICH MET HERE SUNDAY. THEY ASKED THAT THE PRESENT BAN ON SMOKING BE LIFTED IN ALL POSTOFFICE, ALTHOUGH THE AIR CONDITION REQUEST WAS LIMITED TO THOSE OF THE FIRST CLASS.

RESOLUTIONS ASKING THAT WERE ADOPTED BY THE OREGON FEDERATION OF POSTOFFICE CLERKS WHICH MET HERE SUNDAY. THEY ASKED THAT THE PRESENT BAN ON SMOKING BE LIFTED IN ALL POSTOFFICE, ALTHOUGH THE AIR CONDITION REQUEST WAS LIMITED TO THOSE OF THE FIRST CLASS.

RESOLUTIONS ASKING THAT WERE ADOPTED BY THE OREGON FEDERATION OF POSTOFFICE CLERKS WHICH MET HERE SUNDAY. THEY ASKED THAT THE PRESENT BAN ON SMOKING BE LIFTED IN ALL POSTOFFICE, ALTHOUGH THE AIR CONDITION REQUEST WAS LIMITED TO THOSE OF THE FIRST CLASS.

RESOLUTIONS ASKING THAT WERE ADOPTED BY THE OREGON FEDERATION OF POSTOFFICE CLERKS WHICH MET HERE SUNDAY. THEY ASKED THAT THE PRESENT BAN ON SMOKING BE LIFTED IN ALL POSTOFFICE, ALTHOUGH THE AIR CONDITION REQUEST WAS LIMITED TO THOSE OF THE FIRST CLASS.

RESOLUTIONS ASKING THAT WERE ADOPTED BY THE OREGON FEDERATION OF POSTOFFICE CLERKS WHICH MET HERE SUNDAY. THEY ASKED THAT THE PRESENT BAN ON SMOKING BE LIFTED IN ALL POSTOFFICE, ALTHOUGH THE AIR CONDITION REQUEST WAS LIMITED TO THOSE OF THE FIRST CLASS.

RESOLUTIONS ASKING THAT WERE ADOPTED BY THE OREGON FEDERATION OF POSTOFFICE CLERKS WHICH MET HERE SUNDAY. THEY ASKED THAT THE PRESENT BAN ON SMOKING BE LIFTED IN ALL POSTOFFICE, ALTHOUGH THE AIR CONDITION REQUEST WAS LIMITED TO THOSE OF THE FIRST CLASS.

RESOLUTIONS ASKING THAT WERE ADOPTED BY THE OREGON FEDERATION OF POSTOFFICE CLERKS WHICH MET HERE SUNDAY. THEY ASKED THAT THE PRESENT BAN ON SMOKING BE LIFTED IN ALL POSTOFFICE, ALTHOUGH THE AIR CONDITION REQUEST WAS LIMITED TO THOSE OF THE FIRST CLASS.

RESOLUTIONS ASKING THAT WERE ADOPTED BY THE OREGON FEDERATION OF POSTOFFICE CLERKS WHICH MET HERE SUNDAY. THEY ASKED THAT THE PRESENT BAN ON SMOKING BE LIFTED IN ALL POSTOFFICE, ALTHOUGH THE AIR CONDITION REQUEST WAS LIMITED TO THOSE OF THE FIRST CLASS.

RESOLUTIONS ASKING THAT WERE ADOPTED BY THE OREGON FEDERATION OF POSTOFFICE CLERKS WHICH MET HERE SUNDAY. THEY ASKED THAT THE PRESENT BAN ON SMOKING BE LIFTED IN ALL POSTOFFICE, ALTHOUGH THE AIR CONDITION REQUEST WAS LIMITED TO THOSE OF THE FIRST CLASS.

RESOLUTIONS ASKING THAT WERE ADOPTED BY THE OREGON FEDERATION OF POSTOFFICE CLERKS WHICH MET HERE SUNDAY. THEY ASKED THAT THE PRESENT BAN ON SMOKING BE LIFTED IN ALL POSTOFFICE, ALTHOUGH THE AIR CONDITION REQUEST WAS LIMITED TO THOSE OF THE FIRST CLASS.

RESOLUTIONS ASKING THAT WERE ADOPTED BY THE OREGON FEDERATION OF POSTOFFICE CLERKS WHICH MET HERE SUNDAY. THEY ASKED THAT THE PRESENT BAN ON SMOKING BE LIFTED IN ALL POSTOFFICE, ALTHOUGH THE AIR CONDITION REQUEST WAS LIMITED TO THOSE OF THE FIRST CLASS.

RESOLUTIONS ASKING THAT WERE ADOPTED BY THE OREGON FEDERATION OF POSTOFFICE CLERKS WHICH MET HERE SUNDAY. THEY ASKED THAT THE PRESENT BAN ON SMOKING BE LIFTED IN ALL POSTOFFICE, ALTHOUGH THE AIR CONDITION REQUEST WAS LIMITED TO THOSE OF THE FIRST CLASS.

RESOLUTIONS ASKING THAT WERE ADOPTED BY THE OREGON FEDERATION OF POSTOFFICE CLERKS WHICH MET HERE SUNDAY. THEY ASKED THAT THE PRESENT BAN ON SMOKING BE LIFTED IN ALL POSTOFFICE, ALTHOUGH THE AIR CONDITION REQUEST WAS LIMITED TO THOSE OF THE FIRST CLASS.

# Let 'Butch'

cut and wrap your beef and pork for your locker  
And we still cure your hams and bacon  
SMOKE HOUSE

A. G. "Butch" Zweigert  
Klamath Falls, Phone 7060

427 Market

cut and wrap your beef and pork for your locker  
And we still cure your hams and bacon  
SMOKE HOUSE

A. G. "Butch" Zweigert  
Klamath Falls, Phone 7060

427 Market

cut and wrap your beef and pork for your locker  
And we still cure your hams and bacon  
SMOKE HOUSE

A. G. "Butch" Zweigert  
Klamath Falls, Phone 7060

427 Market

cut and wrap your beef and pork for your locker  
And we still cure your hams and bacon  
SMOKE HOUSE

A. G. "Butch" Zweigert  
Klamath Falls, Phone 7060

427 Market

cut and wrap your beef and pork for your locker  
And we still cure your hams and bacon  
SMOKE HOUSE

A. G. "Butch" Zweigert  
Klamath Falls, Phone 7060

427 Market

cut and wrap your beef and pork for your locker  
And we still cure your hams and bacon  
SMOKE HOUSE

A. G. "Butch" Zweigert  
Klamath Falls, Phone 7060

427 Market

cut and wrap your beef and pork for your locker  
And we still cure your hams and bacon  
SMOKE HOUSE

A. G. "Butch" Zweigert  
Klamath Falls, Phone 7060

427 Market

cut and wrap your beef and pork for your locker  
And we still cure your hams and bacon  
SMOKE HOUSE

A. G. "Butch" Zweigert  
Klamath Falls, Phone 7060

# Nothing Like the GEHL



That's what thousands of Gehl owners say... and this better chopping ability is inherited from Gehl Hay-Cutter Silo Fillers, famous for more than 50 years. The Gehl saves men, toil and sweat. With Hay Pickup Attachment, it sweeps up dry hay, straw, or grass for silage from the windrow, chops and blows it into wagon at 1 1/2 to 3 acres per hour. Available with own motor or power take-off.

QUICK CHANGE-OVER FOR 3-WAY HARVESTING

In a few minutes you can attach the Hay Pickup, the new Mower Bar for low or tall-growing grass silage crops, sown broadcast, or the Row-Crop Attachment for Corn, Cane, etc.

GEHL TILT-UP BLOWER elevates to highest silo or mow... blows hay horizontally as much as 100 feet. You can own a Gehl Self-Unloading Wagon Box, build your own, using Gehl Parts Kit and Free Plans, or get Gehl Parts Kit and Free Plans for making your present box self-unloading.

THERE'S NOTHING BETTER THAN A GEHL  
Come in and talk it over... NOW

FREE DEMONSTRATION  
On Your Farm Without Obligation

Crater Lake Machinery Co.

1410 South 6th Phone 2-2544

# WESTERN AUTO SUPPLY CO

WIN A