

House Gives Final OK To Social Security Bill

WASHINGTON (AP) — The House Tuesday gave its final approval to legislation increasing social security benefits at least \$5 a month for the 4 1/2 million Americans now

receiving payments. It is expected to cost about 300 million dollars a year. A roll call confirmed Monday's tentative voice vote of approval and sent the measure on to the Senate. The roll call vote was 369 to 22.

Speaker Rayburn ordered the roll call at the request of Rep. Ford. The measure's passage got many House members off a bad political "hook" on which they were

Board Oks Buildings

PORTLAND (AP) — The State Board of Higher Education Building Committee Monday approved spending funds for building work at Oregon State College, the University of Oregon Medical School and Oregon College of Education. Included was \$94,330 for field construction, planting and other preliminary work on the Oregon State College stadium project. The stadium, when completed, would seat some 22,000.

The committee also authorized \$111,000 for converting a pavilion structure at the OSC men's gymnasium for use in a new filter system for men's and women's swimming pools.

Approved spending \$84,500 for remodeling laboratories at the medical school.

Approved spending \$29,000 for rehabilitating physical education and athletic facilities at Oregon College of Education at Monmouth.

An offer of the Fairmount Church of Christ, Eugene, to sell two buildings and two lots for \$45,000 was accepted. The property is within the boundaries of the University of Oregon campus.

Yakima Man Files Suit

PORTLAND (AP) — A Yakima man, Charles R. Howard, alleging he was beaten without provocation by three Hood River policemen, filed a federal court suit here Monday asking \$150,000 damages.

He named the City of Hood River, Police Chief E. L. Granse, Policemen Merle F. Campbell and William Wood, and Mayor F. Vernon Garrabrant and the six council members, as defendants.

Howard said in his complaint that on May 14 at 8 p. m. and again the next day at 1 a. m. he was "beaten, struck, kicked, pummeled and jostled."

He did not indicate what circumstances led to the event. He said the city was negligent in its training of policemen and moreover kept men on the force "known to have vicious propensities."

snagged last month when they voted against a similar measure. Since then, the bill had been modified to meet objections of some members that it bore the seeds of socialized medicine.

Sponsored by Rep. Doughton (D-N.C.), the measure would raise social security payments by an estimated 300 million dollars a year. The bill calls for:

1. A monthly increase of \$5 or 12 1/2 per cent, whichever is larger, in payments to retired persons already on the rolls;

2. A \$5 monthly boost above the present formula for persons who retire in the future;

3. Proportionate increases for wives, widows, children and other beneficiaries of the system;

4. An increase from \$50 to \$70 the amount of earnings a retired person may obtain monthly and still receive all social security benefits;

5. A freeze of the social security status of totally disabled persons — so their retirement benefits will not be diminished by a calculation of their non-productive years in figuring their benefit payments.

BLOUSES

Sleeveless and with Sleeves— in Plaids and Solid Colors
Sizes 3-14

1⁹⁹

GIRL'S JEANS

Western Style . . . Side Zipper
8-ounce Denim — Sizes 2-14

2⁵⁰ and 2⁹⁸

Leons tots-to-teens



DRESSES

2 LARGE RACKS

1/2 PRICE

JUNIORS • MISSES • HALF SIZES

Casuals, dressy dresses in this seasons smartest styles. Wonderful wearing gabardine, pure silks, rayon crepes, taffetas. It's definitely a must to shop these money-saving values. Choice selections.

FASHION SALON—SECOND FLOOR

COMPLETE NEW SHIPMENT

NYLON PANELS

Yes, another shipment of those lovely nylon marquisette panels. Easy to launder, requires no ironing.

1⁹⁹

RAYON PANELS 99c

DOWNSTAIRS STORE

NEEDLEPOINT

Especially created in new color tones to complement today's furniture and home decor . . . choice pieces . . . buccilla. Reg. 4.50 to 6.95.

2⁶⁹

PILLOW CASES

Beautifully stamped cases in finest quality tubing. Buccilla hemstitched for crochet. Reg. 1.89 to 2.29.

1⁴⁹

ART NEEDLEWORK—STREET FLOOR

LUGGAGE

1/2 PRICE

STREET FLOOR

100% NYLON

MEN'S SEERSUCKER

SPORT SHIRTS

- SHORT SLEEVE
- COMPLETELY WASHABLE
- REQUIRES NO IRONING

Smart looking pastel colors in a sport shirt you'll want for summer. Ideal for traveling and vacationing. Sizes S-M-L. Don't miss this outstanding buy!

3⁹⁵

MEN'S SHOP—STREET FLOOR

ARTEMIS

PROPORTIONED

SLIPS

Whether she's tall . . . tiny . . . or in-between, Artemis proportioned slips fit perfectly. Finest multifilament rayon crepe in white, lavish with matching val lace. 32 to 44.

2⁴⁹

A 3.98 VALUE

RAYON CREPE

BLOUSES

Exquisite rayon crepe in delicate styles. With or without collars, lace embroidery around yokes. A blouse lovely to wear yet washes so easily . . . in white only. 32 to 38.

2⁹⁸

LINGERIE—SECOND FLOOR

THIRSTY

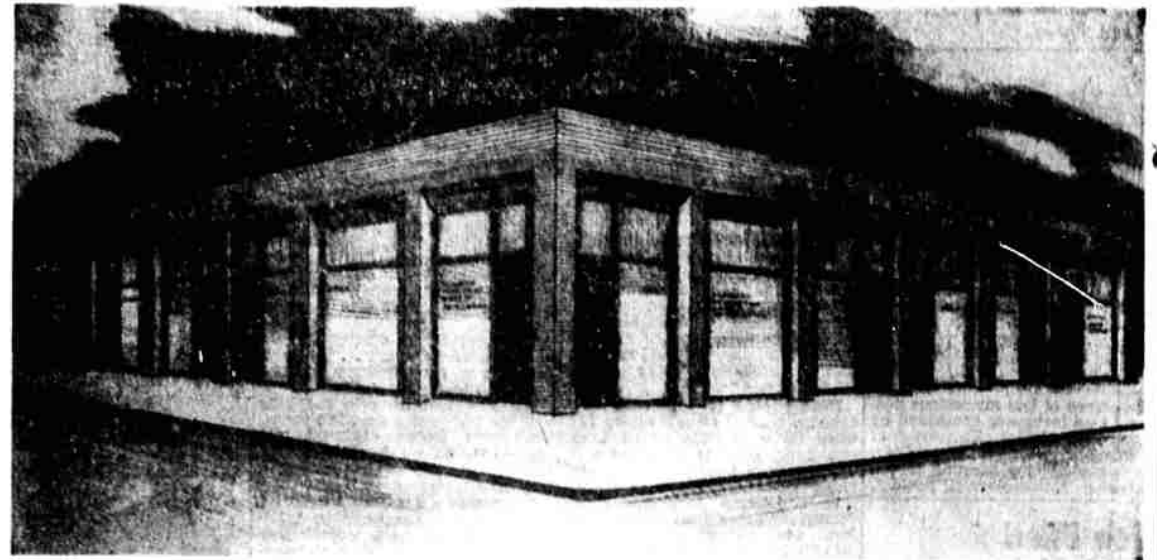
BATH TOWELS

Special purchase! Stock up now with these towels at tremendous savings. Delightful plaids in pleasing pastel colors. Famous Dundee quality in their large size bath towel. A 69c value.

39^c

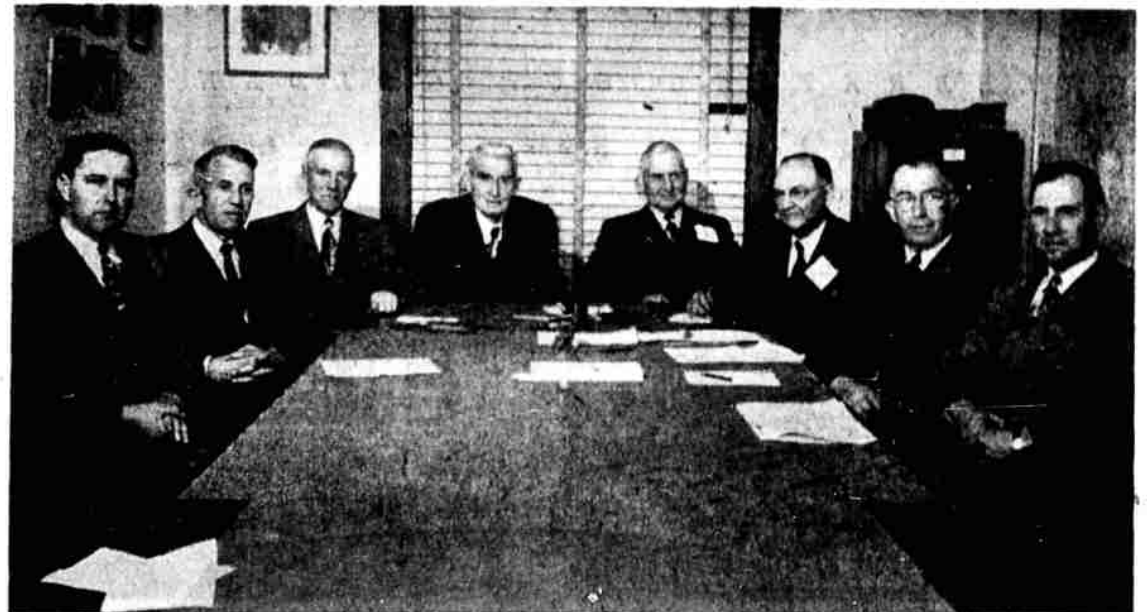
DOWNSTAIRS STORE

You're Invited to Our Formal Opening FRIDAY 1:00 to 5:00 Standard Time



New KPCA Building -- at 9th and Klamath

The farmer-owned Klamath Production Credit Association, in its 19th year serving the farming people of the Basin, has just moved into the remodeled offices of its new building. You are cordially invited to come to our Formal Opening.



DIRECTORS serving the KPCA are (left to right) Murel Long, Lee Holliday, A. R. (Orb) Campbell, E. M. (Gene) Hammond, president; Bill Kittredge, Lee McMullen, secretary-treasurer; E. A. (Ed) Geary and Paul Breithaupt. Kittredge, Hammond, Campbell, Geary and McMullen have served since the founding in 1934.

KPCA Serves Agriculture

Everyone — man, woman and child — connected with the great agriculture-livestock economy of the Basin, consisting of Klamath and Lake counties in Oregon, and Siskiyou and Northern Modoc counties in California, is especially invited to our opening.

Klamath Production Credit Association New Offices Corner 9th & Klam.