

'Build the Basin'



GEORGE CONNER



ROSS RAGLAND



REV. GORDON A. ...



VANCE F. HAWLEY



JOE LaCLAIR



MAJ. CLIFF SANDERS

Supreme Court Reverses Truman's Steel Seizure

Empire and News

Price Five Cents—20 Pages KLAMATH FALLS, OREGON, MONDAY, JUNE 2, 1952 Telephone 8111 No. 2835

Long-Missing Air Force Plane, 8 Bodies Found

Lassen Park Peak Scene Of Disaster

Mangled and charred bodies of eight servicemen were removed yesterday from the wreckage of an Air Force transport plane which had smashed head-on into a Lassen National Forest peak.

The story began Dec. 26. An Air Force C-47 took off that day on a flight from Spokane to its home base, Travis Field, in the San Francisco Bay area.

The flight was apparently uneventful from Spokane to Klamath Falls. At 4:07 p. m., that afternoon, the C-47 made a routine radio check with the Civil Aeronautics station at Municipal Airport here.

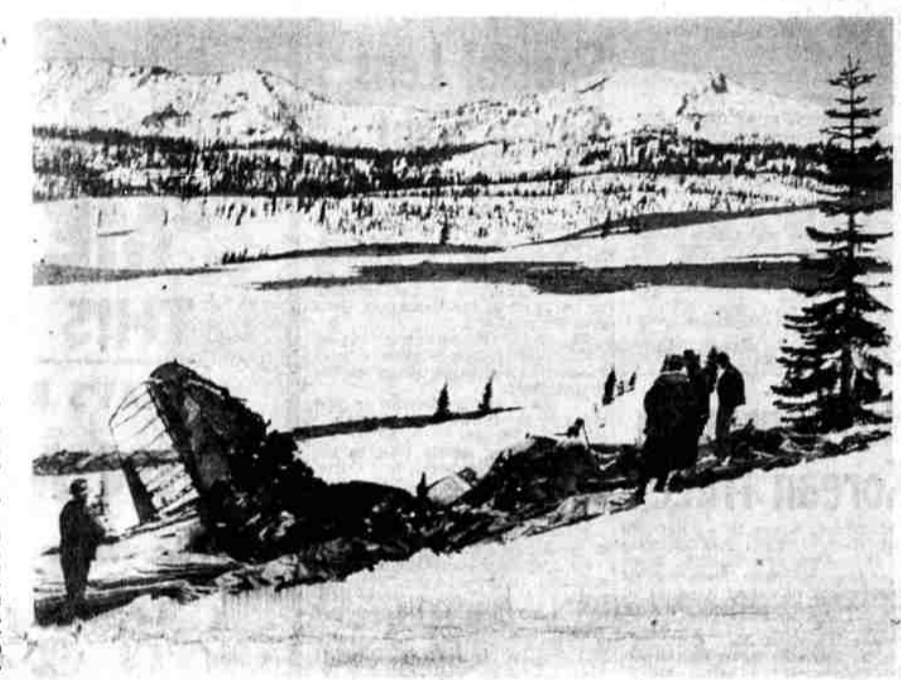
The hoppers have been hatching along the south edge of the fields for the past two weeks, but late last week began moving into the sprouting fields.

Grasshopper Control Specialist Sam Smith, in charge of the local control operation, said the situation is still in hand though extreme measures must be taken to hold the scourge of hoppers back.

Funeral services for Madge Sloan, pioneer Klamath Falls woman who fell down a flight of stairs to her death Saturday night, are to be conducted Wednesday, 2 p. m., from O'Hair's Memorial Chapel.

Three Oregon newspaper women won national prominence at the annual meeting of the National Federation of Press Women here Saturday.

Three Oregon newspaper women won national prominence at the annual meeting of the National Federation of Press Women here Saturday.



DISASTER SCENE—On the steep, snow-covered slope of a Lassen National Forest mountain rests the battered and blackened wreckage of an Air Force C-47 transport in which eight servicemen died.

Pests Overrun Barley Guards

Grasshoppers counted at thousands to the square yard broke over the first lines of defense thrown around some 25,000 acres of premium brew barley southwest of here, and grasshopper control experts plan to throw a hail of dozen mesh-spraying planes into the battle today.

The control project is being carried on under the joint cooperation of several governmental agencies involved and farmers whose lands are to be protected.

Smith reported a labor shortage developed last week at the mixing plant near Newell, and prisoners from the Federal Prison Camp at Newell were assigned to assist L. F. Fox, superintendent of the camp, which is being revamped for possible detention for subversives and possibly to house model prisoners from federal prisoners.

Smith reported a labor shortage developed last week at the mixing plant near Newell, and prisoners from the Federal Prison Camp at Newell were assigned to assist L. F. Fox, superintendent of the camp, which is being revamped for possible detention for subversives and possibly to house model prisoners from federal prisoners.

Smith reported a labor shortage developed last week at the mixing plant near Newell, and prisoners from the Federal Prison Camp at Newell were assigned to assist L. F. Fox, superintendent of the camp, which is being revamped for possible detention for subversives and possibly to house model prisoners from federal prisoners.

Six Injured In Collision

Only one serious highway accident marred the long Memorial Day weekend in the Klamath area. Six persons were injured in varying degrees Saturday afternoon in a head-on collision in Crater Lake Park a few miles above park headquarters.

Four of them were brought to Klamath Valley Hospital by Kaler's ambulance. Mrs. Grace Holmark, 63, Seattle, the most seriously hurt, fractured left knee, possible fractured left arm.

Her husband, Leon Holmark, 68, head injuries. Norris McAtee, 30, Oakridge, bruises and head injuries. Mrs. Margaret McAtee, 31, possible nose break.

Two of three McAtee children were shaken up and were given first aid treatment by park rangers. The two cars crashed on a curve. The cars were taken to park headquarters by rangers and put in the ambulance.

Smith reported a labor shortage developed last week at the mixing plant near Newell, and prisoners from the Federal Prison Camp at Newell were assigned to assist L. F. Fox, superintendent of the camp, which is being revamped for possible detention for subversives and possibly to house model prisoners from federal prisoners.

Mishap Takes Child's Eye

Darlene Brown, 6-year-old daughter of Mr. and Mrs. James W. Brown, 2437 Orchard, lost her right eye as the result of a gunshot accident at Gerber Dam last Sunday afternoon.

A bullet from a .22-cal. rifle, fired by another child, struck Darlene near the right eye and penetrated behind the eye, coming out at the bridge of her nose.

Her father said the gunshot was entirely accidental. He said the rifle was discharged by children playing in a car and that Darlene was standing six or eight feet away from the car on the ground.

The little girl was put in a car and brought down to the Swan Lake junction where she was transferred to Kaler's ambulance and brought to Klamath Valley Hospital.

At the hospital today she was reported out of danger, but the sight of her right eye is believed permanently lost.

Radio Forum On Defense Setup Here

The Klamath Basin could conceivably be subjected to a disastrous emergency at any time, either natural or man-made—fire, flood, earthquake or atomic bomb.

Tonight's "Build the Basin" forum will mull over how the Basin stands on its own feet in face of drastic emergencies. A panel of experts has been assembled to discuss the topic, and as usual the participation of the listening audience is urged.

The panel is Joe La Clair, director of the Klamath County Civilian Defense program; Rev. Gordon Ashbee, Bonanza active in the Red Cross, heading plans and operations in the civilian defense plan and a veteran of the Home Guard and Air Raid Precaution service (ambulance service) during the Nazi blitz of London in the early part of World War II.

Topic for the forum is "How can we best protect the Klamath Basin in event of an emergency?" Listeners may question the panel members merely by phoning 8111, the Herald and News, and placing their query with the switchboard.

Weather

FORECAST: Klamath Falls and vicinity and Northern California—Fair with variable high cloudiness through Tuesday, High Tuesday 75.

High yesterday 75. Low last night 45. Precip last 24 hrs. 0.6. Since Oct. 1 15.17. Normal for period 11.37. Same period last yr. 14.84.

High yesterday 75. Low last night 45. Precip last 24 hrs. 0.6. Since Oct. 1 15.17. Normal for period 11.37. Same period last yr. 14.84.

BULLETIN

LIKE RETIRING WASHINGTON (AP)—The Army said Monday Gen. Eisenhower will retire Tuesday at his own request—and will stop drawing his \$18,761 a year in military pay and allowances.

Accidents Kill 8 in Oregon

Oregon Monday counted eight deaths in the long Memorial Day week end. Three died in traffic accidents, four drowned and one was the victim of a heart attack while fishing.

Traffic victims were: James Marshall Hill, 36, Portland, killed Friday when his car hit an overpass abutment near Portland. Clifford C. Aldrich, 24, stationed at the Portland Air Base, killed Saturday when a car in which he was a passenger went out of control and crashed near Portland.

George E. Perrault, about 35, of Oakland, Ore., killed Sunday 12 miles north of Roseburg when his car ran off Highway 99. His wife, Naomi, suffered critical injuries. Drowning victims were: James McCullough, 24, Portland, drowned Friday while swimming in an irrigation ditch near Harper in Eastern Oregon. Roland Campbell, 17, Sweet Home, drowned in the South Santiam River 25 miles east of Lebanon Sunday, while fishing. Melvin A. Green, 23, Portland, drowned Sunday when a homemade boat overturned in the Columbia Slough.

Rescuers Get Marooned Dog

PORTLAND (AP)—An airdale dog, marooned for two days on a narrow ledge of a Multnomah Falls cliff, was rescued Sunday by Sheriff's Deputies and an Oregonian photographer.

The dog fell over the cliff Friday while chasing a squirrel. Her owner, Philip Fohl, Portland, saved the dog up for dead and returned home. But employees at the lodge below heard barks and whimpering Saturday and the dog was spotted on a ledge a quarter of the way down from the top of the cliff.

Rangers couldn't get down to the ledge, so Sunday morning sheriff's deputies and Kirk Brauh, Oregonian photographer, climbed 450 feet up the face of the cliff. The first 350 feet they climbed by rope. The last 100 feet they had to dig into the cliffside.

They lowered the dog by rope to her master who was waiting below. Mrs. Theresa H. Cox, second place for a news picture taken by a woman and published in a newspaper—the Prineville Central Oregonian.

Margaret Thompson Hill, publisher of the Parkrose Enterprise, and president of the Oregon group, attended the meeting.

Plunge Fatal To Mrs. Sloan

Funeral services for Madge Sloan, pioneer Klamath Falls woman who fell down a flight of stairs to her death Saturday night, are to be conducted Wednesday, 2 p. m., from O'Hair's Memorial Chapel.

Mrs. Sloan was 65 years old, a native of Jackson County. Saturday night she and a group of friends were playing bridge at the Elizabeth Ramsey home, 521 N. 5th, when Mrs. Sloan had to leave the room. She opened a door leading to the cellar stairs and in the dark pitched headlong down the stairs.

Her skull was fractured. She lived only a few minutes after the fall. Mrs. Sloan was the widow of Allen Sloan, who died several years ago, and resided at 17 Pine. She taught music and some of her pupils were to be presented in a recital Wednesday night.

She had lived in Klamath Falls for many years, attended the University of California and taught for some time at Marysville, Calif. Survivors include a daughter, Rosemary Ellingson Baker, a brother, Percy Clifton, Berkeley, Calif., and several nephews and nieces.

Oregon News Women Win

OMAHA (AP)—Three Oregon newspaper women won national prominence at the annual meeting of the National Federation of Press Women here Saturday.

The three, members of the Oregon Press Women's Association, are: Marion Lowry Fischer, of the Salem Capital-Journal, who received first place for a women's department in a daily newspaper. Elizabeth Salway Ryan, Oswego, second place for an editorial which appeared in a daily newspaper, the Oregonian.

Mrs. Theresa H. Cox, second place for a news picture taken by a woman and published in a newspaper—the Prineville Central Oregonian.

Margaret Thompson Hill, publisher of the Parkrose Enterprise, and president of the Oregon group, attended the meeting.

OREGON GROWTH PORTLAND (AP)—Oregon's population has gained about 3,100 every month since the 1950 census and now stands at 1,599,000, the State Board of Health estimates.



LYNN PROPST (above) 320 South Rogers Street, Klamath Falls postal clerk, is shown at his postoffice window this morning.

In The Day's News

As these words are written, the supreme court has just ruled, by a vote of six to three, that President Truman's seizure of the steel industry was unconstitutional. The majority opinion asserts that: "The President's power to issue the seizure order must stem either from an act of congress or from the constitution itself."

"The founders of this nation entrusted the law making power TO THE CONGRESS ALONE, in both good and bad times."

The opinion takes note of the argument that other Presidents without congressional authority have taken possession of private business enterprises in order to settle labor disputes and then adds that "even if this be true congress has not thereby lost its EXCLUSIVE constitutional authority to make laws necessary and proper to carry out the powers vested by the constitution in the government of the United States or any department or officer thereof."

"It would do no good to recall the historical events, the fears of power and the hopes of freedom that lay behind their choices. Such a review would but confirm our holding that this seizure order can not stand."

It is a historic decision. It settles, once and for all, the contention that the President has INHERENT powers not spelled out in the constitution. This doctrine of inherent powers, smacks of the ancient dogma that the king could do no wrong. If the king could do no wrong, it followed that he could not be restrained by the parliament or the people. That made the king the DESPOT.

It had been freely predicted that the court would dodge the issue of the constitutional powers of the President. It didn't. It met the issue squarely, holding that private property can not be seized without due process of law and that due process of law requires action by congress—and by congress ONLY.

It seems to me that is a challenge to congress to get busy as statesmen and patriots, rather than as politicians seeking re-election at any cost—including the cost of pussyfooting and doing nothing that will make anybody mad in an election year.

Congress can meet that challenge in two ways—by standing pat on the laws it has already passed or by passing other and presumably better laws.

I suppose the division in the court will surprise you. The decision written by JUSTICE BLACK and concurred in by JUSTICES FRANKFURTER, DOUGLAS, CLARK, JACKSON and BURTON. It was dissented to by Chief Justice Vinton, who was joined in his dissent by JUSTICE REED and JUSTICE MINTON. Justices Black, Frankfurter, Douglas and Clark have been generally tagged as New Dealers and therefore inclined to follow New Deal reasoning, which has leaned toward the theory of increased power for the chief executive. Yet, in the final pinch, when the time came to ACT finally and irrevocably, they held to the older and more conservative construction of the constitution.

Union Calls New Strike Immediately

WASHINGTON (AP)—The Supreme Court ruled 6-3 Monday that President Truman's seizure of the steel industry was unconstitutional. Within minutes CIO President Philip Murray called a nationwide strike of his 650,000 steelworkers.

In a historic decision striking down hard Truman's claim to vast inherent power under the Constitution, the high court upheld the ruling of U. S. District Judge David A. Pine that the President acted illegally in seizing the steel mills April 8 to head off a strike.

This meant the government must obey Pine's orders to turn the mills back to their owners. It also meant the Truman administration could not carry through its promise of wage increase to the steel workers while the mills were under government ownership.

Monday's high court decision was written by Justice Black. Chief Justice Vinson and Justices Reed and Minton dissented.

Black said for the court majority: "The President's power to issue the seizure order must stem either from an act of Congress or from the Constitution itself."

"There is no statute that expressly authorizes the President to take possession of property as he did here. Nor is there any act of Congress to which our attention has been directed from which such a power can fairly be implied."

"The President is left powerless at the very moment when the need for action may be most pressing and when no one, other than he, is immediately capable of action."

Repercussions of the high court decision were swift. Murray's strike call came less than 45 minutes after the black-robed judges read their opinions. And even before the CIO head acted, the steel workers were streaming out of the mills.

They began walking out of three Youngstown, Ohio, plants by 11:30 a. m. — half an hour after the court began Monday's momentous session. Picket lines formed at the Gary, Ind., and South Chicago works of the U. S. Steel Company at the same time. A National Production Authority spokesman said NPA probably will reimpose at once its embargo on steel shipments to consumer goods manufacturers.

Weather

FORECAST: Klamath Falls and vicinity and Northern California—Fair with variable high cloudiness through Tuesday, High Tuesday 75.

High yesterday 75. Low last night 45. Precip last 24 hrs. 0.6. Since Oct. 1 15.17. Normal for period 11.37. Same period last yr. 14.84.

High yesterday 75. Low last night 45. Precip last 24 hrs. 0.6. Since Oct. 1 15.17. Normal for period 11.37. Same period last yr. 14.84.

High yesterday 75. Low last night 45. Precip last 24 hrs. 0.6. Since Oct. 1 15.17. Normal for period 11.37. Same period last yr. 14.84.

High yesterday 75. Low last night 45. Precip last 24 hrs. 0.6. Since Oct. 1 15.17. Normal for period 11.37. Same period last yr. 14.84.

High yesterday 75. Low last night 45. Precip last 24 hrs. 0.6. Since Oct. 1 15.17. Normal for period 11.37. Same period last yr. 14.84.

High yesterday 75. Low last night 45. Precip last 24 hrs. 0.6. Since Oct. 1 15.17. Normal for period 11.37. Same period last yr. 14.84.

High yesterday 75. Low last night 45. Precip last 24 hrs. 0.6. Since Oct. 1 15.17. Normal for period 11.37. Same period last yr. 14.84.

High yesterday 75. Low last night 45. Precip last 24 hrs. 0.6. Since Oct. 1 15.17. Normal for period 11.37. Same period last yr. 14.84.

Plunge Fatal To Mrs. Sloan

Funeral services for Madge Sloan, pioneer Klamath Falls woman who fell down a flight of stairs to her death Saturday night, are to be conducted Wednesday, 2 p. m., from O'Hair's Memorial Chapel.

Mrs. Sloan was 65 years old, a native of Jackson County. Saturday night she and a group of friends were playing bridge at the Elizabeth Ramsey home, 521 N. 5th, when Mrs. Sloan had to leave the room. She opened a door leading to the cellar stairs and in the dark pitched headlong down the stairs.

Her skull was fractured. She lived only a few minutes after the fall. Mrs. Sloan was the widow of Allen Sloan, who died several years ago, and resided at 17 Pine. She taught music and some of her pupils were to be presented in a recital Wednesday night.

She had lived in Klamath Falls for many years, attended the University of California and taught for some time at Marysville, Calif. Survivors include a daughter, Rosemary Ellingson Baker, a brother, Percy Clifton, Berkeley, Calif., and several nephews and nieces.

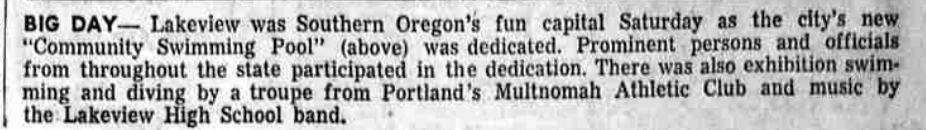
Funeral services for Madge Sloan, pioneer Klamath Falls woman who fell down a flight of stairs to her death Saturday night, are to be conducted Wednesday, 2 p. m., from O'Hair's Memorial Chapel.

Mrs. Sloan was 65 years old, a native of Jackson County. Saturday night she and a group of friends were playing bridge at the Elizabeth Ramsey home, 521 N. 5th, when Mrs. Sloan had to leave the room. She opened a door leading to the cellar stairs and in the dark pitched headlong down the stairs.

Her skull was fractured. She lived only a few minutes after the fall. Mrs. Sloan was the widow of Allen Sloan, who died several years ago, and resided at 17 Pine. She taught music and some of her pupils were to be presented in a recital Wednesday night.

She had lived in Klamath Falls for many years, attended the University of California and taught for some time at Marysville, Calif. Survivors include a daughter, Rosemary Ellingson Baker, a brother, Percy Clifton, Berkeley, Calif., and several nephews and nieces.

Funeral services for Madge Sloan, pioneer Klamath Falls woman who fell down a flight of stairs to her death Saturday night, are to be conducted Wednesday, 2 p. m., from O'Hair's Memorial Chapel.



BIG DAY—Lakeview was Southern Oregon's fun capital Saturday as the city's new "Community Swimming Pool" (above) was dedicated. Prominent persons and officials from throughout the state participated in the dedication. There was also exhibition swimming and diving by a troupe from Portland's Multnomah Athletic Club and music by the Lakeview High School band.