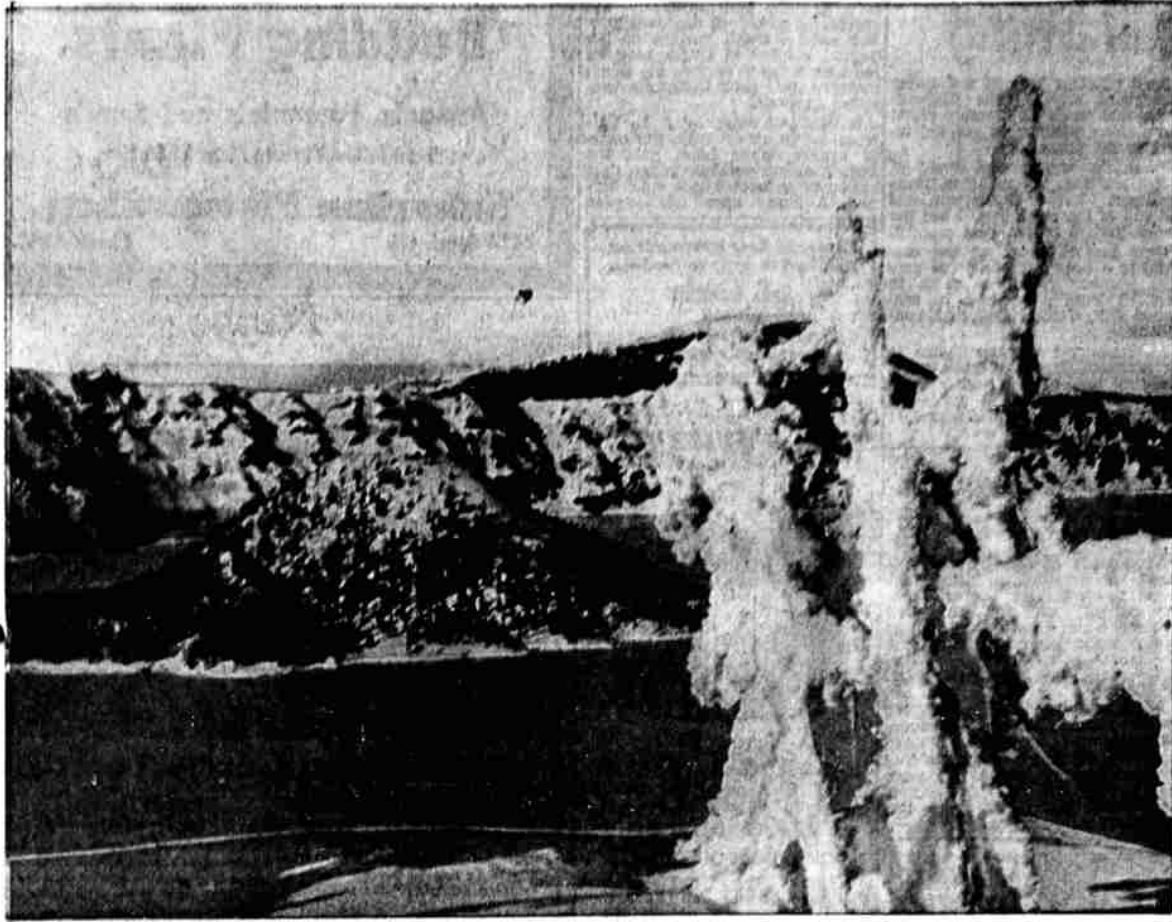


Crater Lake Observes 50th Anniversary



By MALCOLM EPLEY JR.

Klamath County alone can claim one of the Seven Wonders of the New World — magnificent Crater Lake.

Tomorrow it celebrates its 50th anniversary as the feature of Oregon's only national park. It was William Gladstone Steel, an Oregon writer, who thought enough of the lake's pure beauty to begin working to make it a national park. That was in 1885.

In 1902 the movement bore fruit, and on May 22 an Act of Congress established Crater Lake National Park.

First discovered by John Wesley Hillman on June 17, 1853, it celebrates the centennial of its discovery next year; the waters were first called Deep Blue Lake. Subsequent visitors called it Mysterious Lake, Majestic Lake and Lake of Mystery.

Cop Scorns Parking Plea

MEMPHIS, Tenn. (AP)—Carl Simmons parked his car, dropped a nickel in the parking meter and hung an envelope on his windshield reading:

"Patrolman attention: Enclosed are several nickels for the parking meter. The owner of this car is a salesman calling on a local store and does not want to interrupt his sale. Thank you for your courtesy."

The cop on the beat didn't interrupt Simmons' business call. He wrote him an overtime parking ticket.

But a party of visitors from Jacksonville gave it the name Crater Lake on Aug. 4, 1869. That name has stuck.

REVERENCE

But even before white man, the Modoc and Klamath Indians looked upon the lake with reverence as the throne of the great god Lloa. A peak in the god's honor has been named after him . . . one of the many in the lake's precipitous rim.

Joaquin Miller, one of the West's great poets, characterized Crater Lake as "The Sea of Silence" and "A sea of sapphire set around by a compact circle of the great Grizzly Rock of Yosemite."

The lake lies nestled in the huge caldera of once-mighty Mount Mazama, which one day may have been one of the highest mountains in the continental United States, rivaling even Mt. Whitney in elevation.

But in prehistoric times something happened to the mountain. Geologists still aren't in complete agreement as to what it was. Perhaps the great summit collapsed, or was blown off in a mighty explosion. Most say the former is probably what happened.

DEPTH

Today, where the mountain once was, is one of the world's deepest lakes. Its bottom has been sounded to depths of almost 2,000 feet. The water's surface is at an elevation of 6,177 feet above sea level, though it varies according to the year.

The lake has no inlets or outlets. It is filled entirely of melting snow and precipitation, and as far as is positively known loses its water only through evaporation.

Perched atop the "shoreline" — a perpendicular 1,000-foot straight above the water's edge — is Crater Lake Lodge. Other facilities have

been added to the park: a cafeteria, cabins, campgrounds and a winter-time warming hut (the park is open the year around, a trail to the lake, and rainbow trout planted in 1888).

There are 75 miles of paved highways in the park, which lies 60 miles from Klamath Falls.

Incidentally, Klamath Falls is by far the fastest and closest of the park's many entrance ways. Other routes come in from Medford, from Diamond Lake on the north, and over the beautiful East Entrance.

FULL TIME

Only the Klamath and Medford entrances are maintained the year around. The scenic Rim Drive, 20 miles round the lake, opens later end

in the season.

Through the north entrance operates only part time. National Park records show more than 40 per cent of the park's travel goes in and comes out there.

During 1950, the West entered through Medford carried 86,037 into the park and 95,322 out of the park. The Klamath route provided 86,637 people for the park, but only 82,943 came out this way.

The little-known East entrance, perhaps the most scenic of all four, attracted only three per cent of all the 1950 travel through the park. Crater Lake lies wholly within Klamath County; it's ours. Let's use it this Golden Anniversary week-end.

Alabama Chicks Cooperate When It's Breakfast Time

By EDWARD O. PILLEY
BIRMINGHAM, Ala. — (NEA) — Most chickens just lay the eggs and let somebody else deliver them.

But not H. H. Brady's bantams. They lay their eggs on the breakfast table.

Pay Increase Agreed by WU

WASHINGTON (AP) — The Western Union Telegraph Company Tuesday offered an average seven-cent an hour wage boost in an attempt to settle a strike of 31,000 telegraph workers.

A company official said, however, the offer was contingent on government approval of an increase in telegraph rates which would add \$7,700,000 a year to company revenues.

The strike was called April 3 by the AFL Commercial Telegraphers Union.

The average seven-cent boost would do these things:

1. Offset the loss in pay which would be suffered when employees now working 48-hours a week go on a 40 hour week.
2. Offset the loss which workers would suffer through company insistence on cutting out time and one half pay for work on Saturdays and double pay for work on Sunday.

The company offer also would be effective only if the union agreed to drop the overtime weekend pay provisions and some other provisions in the expired contract such as the union shop.

There was no immediate indication of union acceptance of the company proposal.

The Federal Conciliation Service, working hard to end the long strike called the parties together again Tuesday.

Every morning, around six, they scratch on the front door and demand to be let in. If nobody opens up right away, they go back and get a rooster and he really raises Cain until the door is opened.

These chickens are just doing what their mother taught them to do.

About three years ago, the mother hen took a liking to Brady when he went to her owner's house. She flew right up and perched on his shoulder. Brady liked her, too, so he bought her, for 25 cents, and took her home.

Brady says he doesn't know how the hen got the idea, but one

day she just came into the house and laid an egg. She's been doing it ever since. Now the mother and her five daughters all follow the same routine.

Sometimes, when the Bradys sleep late, the door stays shut. The eager little bantams just do the best they can, then, and leave their eggs on the front porch.

Wonderful Relief for ITCHING SKIN!

To promptly soothe intense itching of rashes, eczema, psoriasis, athlete's foot and similar surface skin and scalp irritations, apply Zemo. Highly medicated stainless antiseptic. Zemo stops scratching and so helps heal and clear the irritated skin. Buy Extra Strength Zemo for stubborn cases.

ZEMO

QUALITY Photo Finishing AT YOUR CRYSTAL-KOTE DEALERS

UNDERWOOD'S Photo Service 311 Underwood Bldg. Phone 4819

Luxury Tissue at a Budget Price!

MD TOILET TISSUE

Soft, white, strong

Tastes better MADE at home!

...made with **Kitchen Craft Flour**

GUARANTEES YOU BETTER BAKING OR YOUR MONEY BACK

At your **SAFEMART STORE**

NOTICE CEMETERY MONUMENTS

Our truck will be in Klamath Falls and other Klamath Co. points Tuesday, May 27th, with memorials for Decoration Day. Give your order to Clarence Ward, Klamath Monument Co., 925 High St., by Friday, May 23rd, to get it on this load.

THE OREGON GRANITE CO.
Fine MONUMENTS Since 1898
Home Office: Medford

Crater Lake Milk

GRADE A PASTEURIZED MILK
GRADE A HOMOGENIZED MILK
GRADE A WHIPPING CREAM
GRADE A COFFEE CREAM

If It's the Spot

Ice Cold CRATER LAKE MILK

FROM YOUR DEALER OR CRATER LAKE ROUTE MAN

LOOK WHAT HUDSON BRINGS YOU

FOR AS LITTLE AS **\$67.80** A MONTH

DEPENDING ON THE VALUE OF YOUR TRADE-IN HUDSON FACEMAKER SIX-PASSENGER TWO-DOOR SEDAN

Your present car will very likely more than cover the down payment

Price may vary slightly in nearby areas due to transportation charges. WE MAKE TOP TRADE-IN ALLOWANCES

Famous "step-down" design for the most room, best ride!

Only Hudson has "step-down" design to give you the most room in any car and America's lowest center of gravity for the world's best ride!

Most durable car your money can buy

In every detail, Hudson is built to outperform and outlast any other car! Visit us and try Hudson for yourself. Or phone and a Hudson will come to your door, without obligation to you.

Flash high-compression power!

With Hudson's powerful, high-output, L-head engines, you rule the road with smooth, eager power! See your dealer and test this amazing Hudson power yourself!

America's safest car.

Rugged Monobilt body-and-frame gives you the steel-girdler protection of an armored tank . . . "step-down" design provides you with road-hugging stability . . . Triple-Safe Brakes stop you safely in emergencies! *Trade mark and patents pending.

Finger-tip control

Hudson's geometrically perfect Center-Point Steering gives you great new ease of handling in traffic and in parking. New Dual-Range Hydra-Matic Drive is available at extra cost on all '52 Hudsons.

MILK FROM KLAMATH'S FINEST DAIRIES

IS PROCESSED THROUGH *Crater Lake* NEW, STAINLESS STEEL MILK UP-TO-THE-MINUTE, ALL STAINLESS PASTEURIZING EQUIPMENT — HANDLED ALL THE WAY FROM THE MILKING ROOM TO YOUR OWN TABLE BY *Kitchen Clean Methods*

We need used cars—we will give you more for your present car than you would believe possible!

JUCKELAND TRUCK SALES & SERVICE, INC.

11th and Klamath Sts. Klamath Falls, Ore.

MAKE SAFE DRIVING A HABIT...CHECK YOUR CAR...CHECK ACCIDENTS

KLAMATH FALLS CREAMERY

Crater Lake Dairy Products