

MARKETS and FINANCIAL

Weather

In The Day's News

(Continued from Page 1)

Western Oregon - Sunny and warmer Thursday and Friday. Mostly clear Thursday night. High Thursday 60 to 70. Low Thursday night 38 to 48. High Friday 53 to 63 on the coast and 70 to 80 interior. Northerly to northwesterly winds of 10 to 20 miles an hour off the coast, increasing to 25 miles an hour in afternoons and evenings.

Eastern Oregon - Partly cloudy with occasional showers mostly over mountains Thursday. Clearing Thursday night. Fair and warmer Friday. High Thursday 56 to 66. Cooler east portion Thursday night with lows of 30 to 40. Local frost and freezing. High Friday 62 to 75. Granta Pass and vicinity - Sunny and warmer Thursday and Friday. High Thursday 75, low Thursday night 38; high Friday 89, low 41.

By The Associated Press 24 hours ending at 4:30 a.m.

Table with columns: Grain, Open, High, Low, Close. Rows include Wheat, Corn, Soybeans, Barley, Oats, and various flour types.

Court Records

DISTRICT COURT: Harry L. Martin, failure stop at stop sign. Forfeit \$6 bail. James A. Keener, no stop light. Forfeit \$7.50 bail. Donald L. Klem, no stop light. Forfeit \$7.50 bail. John H. Dracoll, no stop light. Forfeit \$7.50 bail. M. T. Hall, no stop light. Forfeit \$7.50 bail. John M. Moore, no stop light. Forfeit \$6 bail. James A. Keener, overload. Forfeit \$70 bail. George N. Wood, overload. Forfeit \$40 bail. Charles R. Brown, drunk driver. Fine \$25 or 12 1/2 days. Lewis L. Kimball, violation basic rule. Fine \$10. Esther A. Clark, failure display license tabs. Fine \$5.

They had said OPENLY that they're for Taft and had solicited votes on that basis. Being for Taft is nothing to be ashamed of.

I'm not offering wholesale advice on voting, for Oregon people are capable of making up their own minds. But for Republican candidate for member of congress from this district I'll vote for Giles French.

Before we're through with the job of putting the Klamath Basin's water to its FULLEST use (so there can be no excuse to take any of it away from us) we'll need able help in congress. French's 17 years of experience with legislative processes in Oregon will give him a long head start in Washington. He's able and competent. Besides, he's a careful student. Before he speaks out on a problem, he KNOWS through study and investigation what he's talking about. That makes him effective.

Livestock

PORTLAND (U - USDA) - Cattle salable 200; market slow, few early sales steady; later sales cows weak to 50c lower; sorted load good around 975 lb fed steers 33.25; some unsold, few utility and commercial steers 25.00 - 31.00; utility heifers 22.00 - 26.00; canner and cutter cows mostly 18.00-22.00; few utility cows 22.00 - 24.50; utility and commercial bulls 26.00 - 29.00. Calves salable 35; market about steady; good and choice vealers 32.00 - 36.00; utility and commercial grades 20.00 - 30.00.

Hogs salable 250; not including 200 bought to arrive; market generally strong to 25c higher; choice No. 1 and 2 180-235 lb weights mostly 23.00 - 23.25; few choice 300-400 lb sows 16.50 - 17.50; lighter weights up to 18.25; good and choice feeder pigs quotable 20.00-21.00. Sheep salable 50; market steady; choice and prime spring lambs lacking, quotable 30.00 - 30.50; few good 104 lb woolled lambs 27.00; good and choice No. 2 pelt 201 lb lambs 26.50; odd good slaughter ewes 9.00.

VOTE STEELE FOR SHERIFF (Pd. F. Steele)

Stocks

NEW YORK (U) - Stocks wavered uncertainly on the downside in a quiet market Thursday. As a general rule the bulk of prices were lower by fractions to between 1 and 2 points. Scattered gains were largely fractional but a few went up to around a point. Volume was an estimated million shares.

QUOTATIONS

Table of stock quotations including Admiral Corporation, Allied Chemical, Allis-Chalmers, American Airlines, American Power & Light, American Tel. & Tel., American Tobacco, Anaconda Copper, Atchafalaya, Bethlehem Steel, Boeing Airplane Co., Borg-Warner, Burroughs Adding Machine, California Packing, Canadian Pacific, Caterpillar Tractor, Celanese Corporation, Chrysler Corporation, Cities Service, Consolidated Edison, Consolidated Vultee, Crown Zellerbach, Curtiss Wright, Douglas Aircraft, Dupont of Nemours, Eastman Kodak, Emerson Radio, General Electric, General Foods, General Motors, Georgia Pac Plywood, Goodyear Tire, International Harvester, International Paper, Johns-Manville, Kennecott Copper, Libby-McNeill, Lockheed Aircraft, Loew's Incorporated, Long Bell A, Montgomery Ward, Nash-Kelvinator, New York Central, Northern Pacific, Pacific American Fish, Pacific Gas & Electric, Packard Motor Car, Penney (J.C.) Co., Pennsylvania R. R., Pepsi Cola Co., Philco Radio, Radio Corporation, Rayonier Incorp, Republic Steel, Reynolds Metals, Richfield Oil, Safeway Stores Inc, Scott Paper Co, Sears Roebuck & Co, Seely-Vacuum Oil, Southern Pacific, Standard Oil Calif, Standard Oil N. J., Studebaker Corp., Sunshine Mining, Swift & Company, Transamerica Corp., Twentieth Century Fox, Union Oil Company, Union Pacific, United Airlines, United Aircraft, United Corporation, United States Plywood, United States Steel, Warner Pictures, Western Union Tel, Westinghouse Air Brake, Westinghouse Electric, Woolworth Company.

LIVESTOCK

CHICAGO (U) - Hog prices jumped as much as \$1.00 a hundred pounds in a very active market Thursday with one small lot bringing \$21.75 the highest selling price since October 1. Most weights and grades of cattle were slow and steady. The sheep market also was steady. Butcher hogs were 75 cents to \$1.00 higher and sows around 75 cents higher. Most choice butchers sold from \$21.25 to \$21.50. Sows 400 pounds and under topped at \$18.75 steady to 25 cents higher. Most good and choice steers sold from \$30.50 to \$35.00. Good and choice heifers topped at \$34.75, commercial and utility cows brought a \$25.50 top. Utility to low good old crop woolled lambs were fully steady at \$23.00 to \$27.00. Slaughter ewes were weak at \$12.00 on the outside. Choice light ewes topped at \$13.00.

SAM COON SAYS:

"The state and federal government have a tendency to deny local communities a right to run their own affairs, centralizing this power in Washington, D.C. and Salem. I feel the closer you get government to the people the better the government you'll have."



Republican for U.S. CONGRESS. Paid for by the Coon for Congress Committee; George Scott chairman; John Palmer treasurer.

GRAINS

CHICAGO (U) - Grains closed with a mixture of gains and losses on the board of trade Thursday after spending the session in small up and down movements. A late rally sent most wheat contracts ahead after they had approached their seasonal lows, July lotting its previous bottom. Austria bought a cargo of wheat. Oats was the weakest cereal. Wheat closed 1/4 lower to 3/4 higher. May \$2.44 3/4-2.45, corn 1/4-1/2 higher, May \$1.83 1/2-1.84, oats 1/4-1/2 lower, May 77 1/2-78, soybeans 1/4-1/2 lower to 2 cents higher, May \$3.00 1/2-3.01, and hard 30 cents to 50 cents a hundred pounds higher, May \$11.62.

Portland (U) - Wheat (bid) to arrive market, basis No. 1 bulk, delivered Coast; Soft White 2.43; Soft White (excluding Rex 2.43; White Club 2.43. Hard Red Winter: Ordinary 2.45; 10 per cent 2.45; 11 per cent 2.45; 12 per cent 2.45. Hard White Bar: Ordinary 2.45; 10 per cent 2.45; 11 per cent 2.45; 12 per cent 2.45. Receipts: wheat 53; barley 17; flour 2; corn 3; oats 1; mill feed 7.

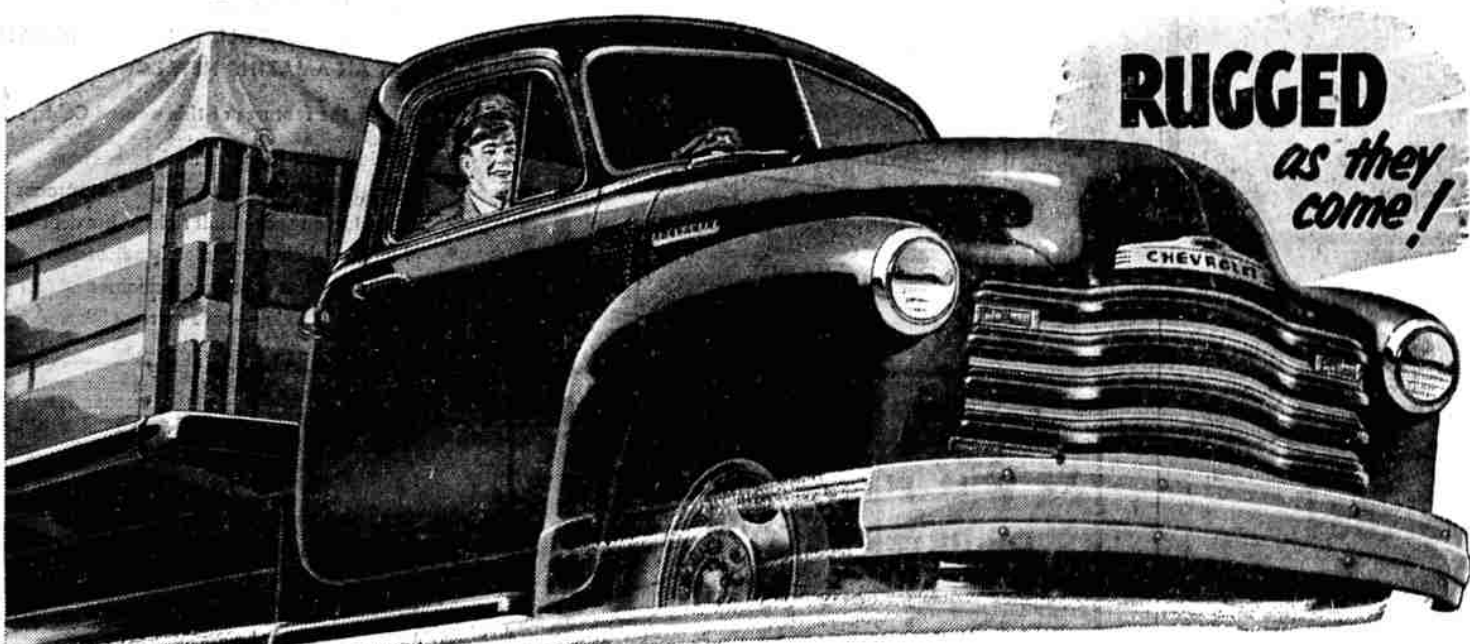
Livestock

SOUTH SAN FRANCISCO (U - USDA) - Cattle 25; supply too light to test market; earlier in week choice 1040 lb slaughter steers 33.00; good-choice 1000-1200 lbs 31.00 - 32.00; utility and commercial range cows 24.00 - 25.25; young cows 27.00; canner and cutter 17.00 - 20.00. Calves none. Hogs 200; butchers 50c higher; sows steady; 180-240 lb butchers 22.50; few 250 lb at 21.50; choice sows 15.00 - 15.50; Wednesday butchers 50c higher; sows steady; 180-240 lb butchers 22.00. Sheep 150; supply mostly small; lot spring lambs; no early sales; Wednesday salable 125; steady; two lots good-choice spring lambs 27.00.

Obituary

LA CASSE: Alfred Gideon La Casse, 81, a native of St. Charles, Quebec, Canada and a resident of Klamath Falls for 11 years, died here May 13, 1952. Survivors include the widow, Rose of this city; two sons, Joe of East Grand Forks, Min. and Walter of Dimuba, Calif.; two daughters, Mrs. Devina Schulte of Northome, Min. and Mrs. Laura Ryan of this city; a sister, Mrs. Amanda Bruchse of St. Magloire, Quebec, Canada; also 15 grandchildren. Funeral arrangements will be announced later by Ward's Klamath Funeral Home.

You're money ahead when you buy on these PLAIN HARD FACTS



(Continuation of standard equipment and trim illustrated is dependent on availability of material.)

Chevrolet advertisement featuring the slogan 'Stack up what you get for what you pay... and join the nation's largest group of truck users by choosing Chevrolet'. It lists four facts: 1) It's got to be low in cost, 2) Upkeep and operating costs must be low, 3) How well the truck does the job is all-important, 4) The truck must be rugged, long lasting. It also includes a 'Fact No. 1' section about saving money on purchase prices and a 'Fact No. 2' section about saving money on operating costs.

Timber Peace Group Ends Negotiations

(Continued from Page 1) health and welfare program. Kesterson turned down that proposal, and countered with his settlement offer. The offer made the union would grant workers a 7 1/2-cent pay raise effective as of April 1 or 60 days prior to approval of the wage increase by the Wage Stabilization Board; three additional paid holidays with certain qualifications for obtaining holiday pay; liberalized vacation provisions; and an additional 2-cent hourly increase in night shift differential pay. Klamath Basin Pine Mills employees approximately 225 persons. It is the only local mill down because of strike now. Car-Ad-Co, which was struck the same day as Klamath Basin Pine Mills, resumed operation last week.

Federal Convicts Now at Newell

NEWELL - Thirty-two short-term convicts from McNeil Island federal prison are now stationed at the Tulelake federal prison camp, Superintendent Lemuel Fox announced today. The prisoners are being used in work rehabilitating the buildings of the old Japanese Relocation Center military area for more extensive prison use. Fox said he expected another detachment of federal convicts in about two weeks.

Listen to... Earl T. NEWBRY

Advertisement for Earl T. Newbry, featuring a portrait and text: 'Old at 40, 50, 60? - Man, You're Crazy'. It promotes KFLW 7:00 p.m. and includes a testimonial from Mr. Newbry about his four-year stewardship of the office of Secretary of State for Oregon.

DRESS BETTER FOR LESS!

Craig's advertisement for a dress. It features a large image of a woman in a dress and text: 'Garden of Values', 'Crisp! Fresh! New!', 'Tissue Gingham Dress', '7.99', '8.40', 'Two "Special Purchases"', 'Regular 3.99 PEASANT BLOUSES \$2.99', 'Regular 5.99 CIRCLE SKIRTS \$3.99', 'Lovely Floral Boutonniere with a box of 3 PAIRS Dark Seam NYLONS FOR ONLY \$3.30', '4.57 VALUE! 15 Denier 51 Gauge Full Fashioned Sheers', 'OUR bouquet to you in this Garden of Values event! Beautiful first quality nylons and a boutonniere... \$4.57 value for only \$3.30.' The address is 617 Main.

Advertisement for 'Two "Special Purchases"' featuring 'PEASANT BLOUSES' for \$2.99 and 'CIRCLE SKIRTS' for \$3.99. It also promotes 'Lovely Floral Boutonniere with a box of 3 PAIRS Dark Seam NYLONS' for \$3.30, valued at \$4.57. The ad includes a testimonial about the quality and value of the items.