



Versatile Aprons Gad Gaily To Bridge Dinner

HOLLYWOOD, California—Edith Head, top designer for Paramount Pictures, makes practical and pretty use of sheer wool scarves both in her personal wardrobe and those she designs for Paramount stars. Says Miss Head, "In my personal wardrobe I have four or five skirts made of wool scarves sewn together and worn with wool jersey tops. Some of them have pockets set into the side seams, some are gathered full on to a wide grosgrain ribbon band, others are laid in unpressed pleats and still others shaped in with tucks.

"I also wear aprons made of wool scarves," Miss Head reports. "I think they make wonderful 'picker-uppers' over a slim black skirt and sweater or sweater and tapered slacks. The 36-inch size is gathered on to a piece of ribbon that ties in the back. One I have in a wool plaid—a square of wool plaid makes an attractive and colorful tartan apron and can be made with or without pockets."

USE COLOR
Some are in vivid colors, others more muted, but they usually are selected with some black accent in them because this designer says she wears three different black wool jersey tops with the slim skirts and the aprons. One is a turtleneck style, another a regular pullover, and the third an off-shoulder type.

Recently, Miss Head whipped up some pretty wool scarf accessories for Ann Robinson, Paramount's new star soon to be seen in "The War of the World." Miss Robinson quickly adds a festive air to her simple black skirt and wool jersey top when she ties on one of the bright aprons. She also feels in a gay mood when she wears one of the several skirts Miss Head did for her in imported sheer wool scarves printed in conversation-piece designs. One has a matching square to be folded and worn over the shoulders or tucked into the waistband at one side for an added flair.

NEW IDEA
Miss Head says it is easy to do—and she votes for it because it is attractive and at the same time different from what everyone else may be wearing for leisure hours. She adds another "easy trick for

PTA Notes

RIVERSIDE
Mrs. Axel Carlson has been elected president of the Riverside PTA. Other officers elected at a meeting March 11 include Mrs. Warren Ausland, First Vice President; Mrs. Harry Goeller, Second Vice President; Mrs. Alexander Luft, Secretary; Mrs. Sam Ritchey, Treasurer.

A unanimous ballot was cast in favor of all candidates. Joe LaClair audio-visual aid director, spoke on the teaching tools used in the schools today. Two films were shown and La Clair demonstrated with some equipment used. Films centered on the teaching of proper attitudes and one showed a subject that couldn't be visualized in any other way.

The Riverside orchestra, led by Freeman Yount played a Spring number.

A baked food sale will be sponsored by the Riverside PTA, April 5 at Carter's and the Pine Street Market.

Room prize was won by the first grade downstairs and the seventh grade upstairs. Refreshments were served by fourth grade mothers.

Bright Blue Lady's Choice For Jewels

Black may be the color of his true love's hair, as the old song goes, but chances are that if she is up on her fashion news, blue will be the color of her jewelry this season. The Jewelry Industry Council tells us that blue seems to be more important in jewelry collections this Spring than any single color has been in a long time. Ranging from the delicate shades seen in moonstones, through the water shades of blue crystal and into sapphire, there is a blue for everybody.

Second popular color for Spring and Summer fashion jewelry seems to be white. Beautifully white beads to put frosting on the neckline of a dress, pins that are made of white beads in varying sizes and sparked here and there with shining crystal; earrings that are large white ovals framed in gold like the family portrait... or large irregular beads in white or quartz colors caged into white or prominent gold prongs.

Mother-of-pearl is featured in the new jewelry collections, too. Sometimes it is in natural color, sometimes tinted to pastel shades or the natural smoke color.

NEW LOOK
In silhouette, jewelry has a new look, too. The trend in earrings is toward the ever larger button type rather than the drop which has been a fashion favorite for several seasons past, although there are lots of drop styles for the woman who still likes them best.

Fashion's favorite necklace is still the choker, but it seems to follow a little different line, too. It rests higher on the neckline, right

Cool Dessert Spring Pep-Up

With the first signs of spring our thoughts turn to cool desserts. Peanut Butter Mousse is one of the nicest we can think of. It, like all dishes prepared with peanut butter, is full of flavor and food values. For peanut butter is one of our richest sources of energy, protein, vitamins and minerals.

Peanut Butter Mousse is elegant enough to grace the most carefully laid luncheon party table, but that doesn't mean that you can't use it to give a lift to family dinners, too. It's a light fluffy concoction which would go especially well after a rather heavy meal.

PEANUT BUTTER MOUSSE
1/2 cup peanut butter
1/2 cup milk
1/8 teaspoon salt
3 tablespoons light corn syrup
1 egg white
1/4 cup sugar
1 cup heavy cream, whipped
Place peanut butter in bowl, add one half the milk, whip with beater until smooth; add remaining milk.

at the base of the throat, like the collar on a round-necked dress.

Pins, still among the most important pieces in jewelry fashions, are taking the opposite track from earrings and growing smaller. The newest looking ones are worn in pairs or triplets, either graduated from medium-sized to small, or all of a same size. Often they are conversation pieces, proud little poodles, coy miniature turtles, or humming birds poised in flight.

The bangle bracelet has so endeared itself to the heart of the American woman that there seems no replacing it. Instead, the tendency is to add another similar one to the collection you already have, so that you can jingle your Spring Song in an even more definite key this year.

whip until smooth. Add salt and corn syrup. Blend. Beat egg white until foamy, add sugar gradually, beating until stiff and sugar is well blended. Fold into whipped cream. Add peanut butter mixture; blend. Turn into tray. Freeze rapidly without stirring. When frozen set control at normal freezing temperature. Yield: 1 quart.

BOY! WHAT 'MEATY' FLAVOR! 'TABLE-QUALITY' FRISKIES HAS! ALBERT SURE USES HIGH-GRADE INGREDIENTS!

YESSIR! EVERY INGREDIENT IS U.S. GOVERNMENT INSPECTED! AND THE FRISKIES FORMULA FOR COMPLETE NOURISHMENT WILL HELP US STAY HEALTHY- AND LIVE LONG!

Keep your dog frisky with FRISKIES!

ALBERS MILLING COMPANY • A DIVISION OF CARNATION COMPANY

HERE'S A BOON OF AN IDEA for women who must make their clothing dollars stretch... the sheer wool apron that can be worn over a slip wool skirt, or any basic wool dress. It's as simple as buying a wool head scarf, turning it cornerwise and using the cut-off corner for belt. Designers are going slightly dippy over the idea. This one was designed for Ann Robinson, new Paramount star.

ART AWARDS SET

PRIZES (24)—Prizes totaling \$7,600 will be awarded by an international committee to artists participating in the 26th Biennial Art Exhibition opening in June.

Four prizes of about \$1,500 each will go to an Italian and foreign painter and to an Italian and foreign sculptor. Two prizes of about \$300 will be awarded to an Italian and foreign engraver.

DISPOSABLE CUPS

Handy paper cups with handles are making a big hit with television hostesses. These are said to have several advantages—they make no noise when the show is on, and Mom does not need to wash them after the guests leave. All she does is toss them in the waste paper basket.

CLEAN PUFF

A clean white cotton ball can be tucked in the compact each day for extra skin cleanliness. When an ordinary powder puff gets dirty, it is likely to deposit grime on the skin each time it is used.

Serve it tonight! The **MISSION** winner dinner with Tuna and Blue Lake Beans

As Advertised in LIFE!

Make it in 19 minutes! Only 19c a serving!

A ONE-DISH MISSION MEAL that's PERFECT for Lent!

Make it in 19 minutes! Only 19c a serving!

A ONE-DISH MISSION MEAL that's PERFECT for Lent!

Try this Winner Dinner now being featured in LIFE Magazine. It's a hot and hearty one-dish dinner, and you can prepare it in 19 minutes for only 19c a serving! Make it with Mission—the top-quality, top-tasting macaroni that always cooks firm and tender.

Winner Dinner Hot'n Hearty One-dish Dinner

A Swell Recipe

- 1 lb. elbow macaroni, cooked
- 1 can Blue Lake green beans
- 1/2 cup butter or margarine
- 1/2 cup milk
- 1/2 cup catsup
- 1/2 cup grated cheese
- 1/2 cup dry mustard
- 1/2 cup each chopped parsley and onion
- 1/2 cup minced onion, optional
- 1/2 cup grated cheese

During time macaroni is cooking (in boiling salted water), drain beans, boil liquid rapidly until reduced to 1/2 cup. Add enough milk to make 1 1/2 cups. Stir in flour, paprika and dry mustard. Add beans, hot liquid rapidly until reduced to 1/2 cup. Add catsup, milk and cook, stirring constantly, until mixture thickens and comes to a boil. Add drained beans and tuna; heat to serving temperature. Toss hot cooked macaroni with remaining ingredients. Arrange macaroni around platter; tuna bean mixture with toast cut with fish cookie cutter.

MISSION MACARONI • SPAGHETTI • EGG NOODLES



WEYERHAEUSER ANNUAL REPORT

HERE ARE THE HIGHLIGHTS of the Company's 1951 report. They point out how the Company's long-range plan for diversified and integrated operation creates jobs, stabilizes employment and contributes to the prosperity of the Pacific Northwest. Over the past ten years, the Company has invested \$147 million in plants, equipment and roads. Plans call for capitalizing expenditures of approximately \$38 million during 1952, together with steady investment in research, engineering and development.

WEYERHAEUSER TIMBER COMPANY
Working in the Pacific Northwest to Build a Permanent Forest Industry



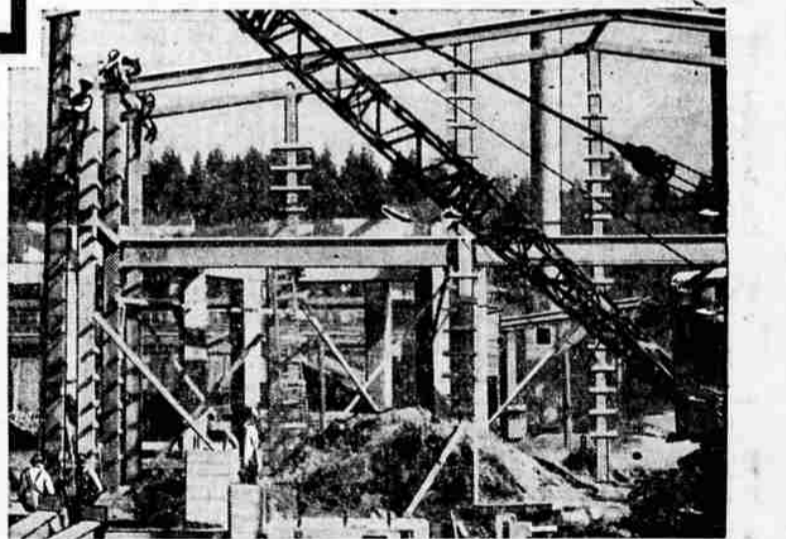
SALES INCREASED Sales last year totaled \$213,175,036, representing a gain of 21 per cent over 1950. This increase resulted principally from the added production capacity of the Company's new plants. As reported, the new Coos Bay branch plant went into production last year. Pulp and containerboard production was also substantially increased. Plywood sales were up, and there was some improvement in the sale of Silvaco bark products and the new Silvalex fibers.



TAXES WERE UP The Company paid \$38,914,216 in taxes during 1951. Of this amount, \$31,600,000 went to the Federal government. The tax increase over 1950 exceeded the \$13-million mark. It is interesting to note that the taxes paid per employee were \$2,815. This means that for each \$1.00 paid in wages and salaries to our employees, approximately 63 cents was paid in taxes.



EMPLOYMENT UP Wages and salaries paid last year totaled \$61,974,585. The average annual wages of hourly employees was \$4,100. In addition, the Company paid \$5,217,160 for pensions, employee insurance and social security taxes (averaging \$377 per employee). There were 13,823 people on the payroll at the end of 1951—an increase of 214 over 1950. The Company's assets per employee (book value of tools, timber and plants) totaled \$19,470.



PLANTS EXPANDED Last year the Company invested \$31,704,553 in new plants, equipment and roads. Principal improvements included completion of the new sawmill at Coos Bay, construction of a plywood plant and expansion of pulping and power facilities at Springfield, installation of barkers and chippers at various locations, construction of a new power plant at White River and increase of sulphate pulping facilities at Longview.



EARNINGS IMPROVE Earnings last year were \$6.39 per share. Of this amount, \$2.50 was paid in dividends to shareholders, and the balance retained in the business for plant expansion and working capital. In this manner a big share of the proceeds from the gradual liquidation of virgin timber is being invested in the growing of new timber crops, research and diversification of manufacture.