

Greece, Turkey are Anchors Of Ring Around Communism

By The Associated Press
Greece and Turkey, the new partners in the North Atlantic Pact, are southern anchors of the massive defensive ring being forged in Europe against the threat of Soviet aggression.

Their strategic importance has long been recognized by Russia and the western democratic world.

Turkey, astride the Dardanelles, bottles up Russia inside the Black Sea, just short of the Mediterranean. For years Moscow has sought warm water ports. One of the Kremlin's main objectives has been an agreement with Ankara giving Russia use of the straits and nearby bases. This, the Turkish government always refused.

Greece blocks off the satellites from access to the Mediterranean. The Greek border is between Bulgaria and the Aegean Sea. And with Tito's defection in Yugoslavia, the Red sphere was cut off from the Adriatic Sea which empties into the Mediterranean. Tito's break with Moscow also isolated Albania, weakest of the little buffer states.

Immediately after World War II, Greece was torn by Red-inspired revolts. Many guerrilla attacks were mounted from Romania, Albania and the then subservient Yugoslavia.

American aid began to pour into both Greece and Turkey in 1947 under the Truman Doctrine. It has continued without interruption. Greece has had something under

\$2,000,000,000 in aid and Turkey around \$400,000,000.

Both Greece and Turkey are small and comparatively poor countries but they are not military pygmies. They can muster 2,600,000 troops and they fight well. Greece is about the size of Alabama; Turkey is a little larger than Texas. Greece has 7,600,000 people; Turkey 20,934,000.

Neither nation is self-sufficient. Both must import goods to live. So both must sell.

Greece has been having a particularly hard time because Communist Guerrillas dragged out the agony of World War II destruction. Bridges, roads and ports were in ruins. Thousands of villages were burned over twice. Livestock was killed, and farm tools were destroyed or stolen. At one point 750,000 refugees from the farming sections were living in tin shacks around Athens to escape the Communists. Finally the Guerrillas were defeated in September, 1949. Farmers moved back to their wrecked fields.

The farmers' return was basic to the economy. Only a fourth of Greece's land can be filled for crops, yet 75 percent of the workers are farmers.

Greece is still far from paying her own way in world markets, but production is creeping upward. In the year ending June, 1951, Greece imported goods worth \$434,000,000 and sold goods worth \$95,

000,000.

Food from abroad is one of the big Greek expenses. Before World War II, she produced only 70 percent of the food she ate. That slumped badly during and just after the war. But now it is up to 77 per cent. For the first time Greece is producing all the rice and cotton she needs.

The U. S. helped on that. U. S. aid furnished fertilizers, farm implements, mules, horses, cows and technical advisers. Some land is being drained, to add to the productive area.

Greece's top exports are tobacco and fruits. This past year she exported some cement for the first time since the war.

She has some low grade coal deposits which are opened up with the U. S. aid, and some small factories are being built close by. In two years technicians say the coal deposits will be going well enough to produce all the fuel Greece needs—which means one more basic item they won't have to spend foreign exchange on.

Turkey stayed out of World War II. So she escaped the destruction Greece suffered. But she keeps a large army which is a drain on the rest of the economy.

However, for the calendar year she came very near to footing her own bills in world markets. She bought goods worth \$393,800,000 and sold goods worth \$312,200,000. Her largest exports were tobacco, cot-

Merrill Hi News

By YVONNE CONNER and EDNA MAE REEVES
Eighth Grade Home Economics girls gave a luncheon last Thursday for the teachers and Mrs. Rader. Food was served and prepared by the girls. Theme for the decorations was "St. Patrick's Day."

County band practice was held Tuesday evening at Allamont Jr. High School. County bands got together and played to their hearts content.

ton and dried fruits. She also sold some coal, iron ore, pig iron, steel and chrome.

The import figures of Greece and Turkey don't reflect the imports of military equipment, granted in U.S. foreign aid.

Both nations immediately sent military units to Korea, to fight alongside the American G.I. And Greece was the first nation to agree with the U.S. on branding Red China an aggressor before the United Nations Assembly.

For the past ten years Turkey has spent 33 to 40 per cent of her budget on national defense. The Turks have been so eager for American advice and training that last July there were 1,200,000 officers, technicians, and civilian instructors working with the Turkish army.

Turkey has a new military university which has already graduated 25,000 students, of whom 5,000 were officers.

Explorer Post In Top Hoop Spot

Explorer Post 104 has won the Post League championship. It has been announced. The team was named tops in the league after defeating Post 109 20-1.

It was undefeated in its six games, which included Posts 110, 116 and 142. The Championship team was sponsored by the American Legion.

Jim Craig of Post 104 was high scorer with 54 points.

Tule Man Makes High Lease Bid

Walter L. Meshke, Tulelake, made a high bid of \$1200.24 for 36 acres of public land up for lease just south of the Tulelake city limits.

Project Mgr. E. L. Stephens, Bureau of Reclamation, reported three persons entered bids on the lease.

LOW BID

COULEE DAM #2 — The apparent low bid for a large painting on the interior of Coulee Dam's right powerhouse was submitted here Tuesday by the F. O. Reptine Company of Salem, Ore.

The bid of \$108,660 topped the engineers' estimate by more than 24,000.

SINUS INFECTIONS

DR. E. M. MARSHA
• Successfully Treated
• Exclusive Method
220 N. 5th Phone 7881
Chiropractic Physician

CHOKED with GAS?

THANK HEAVEN! Most attacks are not fatal. Indigestion. When it strikes, take Bell's antacid tablets. They contain the fastest-acting medicines known to doctors for the relief of heartburn, gas and similar distress. Be.

NOTICE!

Francis "Smithy" Smith
Expert Tree Surgeon

Experienced in Landscaping, Spraying, Shado and Fruit Tree Pruning. "Smithy" will be available through

SUBURBAN FLOWER SHOP and NURSERY --- Ph. 8188

LET US WORK with you NOW on your landscape needs!

Stock Assoc. Ships Cattle

A large consignment of cattle were shipped to North Portland this week by the Klamath County Livestock Marketing Association, Mr. C. M. Warren announced.

The shipment was consigned to Benson, Bodine and Clark, and Basil Brown, Klamath cattlemen, carried out the shipping operation.

Consignees were John Kerns, Ken, with 15 head of fat steers; R. H. Omer, Tulelake, with 17 head heifers, steers; and Cecil Drew, Old Midland Road, with five head of cows and heifers.



So MARTHA Shops AND Shops

Haven't Slept A Wink!

been trembling in our boots . . . holding our breath with fingers crossed . . . been looking over our left shoulder at the new moon . . . HOPING that WE'D get to tell you FIRST about the flirty, flippity, fanciful YOUNG GIRL FROCKS at TOTS-TO-TEENS . . . the MOST devastating little DRESSES for young misses who flush prettily when the boy next door comes by . . . SEMI-TEEN charmers with flounces and frills . . . lace trimmed lovelies and sweet young plaids, Scotch as a Bagpiper's kiltie . . . stripes as straight as a new yard-stick . . . prints that romp all OVER a frock . . . liting colors that fairly SING of Spring . . . little hug-me-tight boleros . . . peplums that flirt with TEEN-AGER waists . . . two-tone young beauties and eyelet embroidery . . . ribbons and buttons and round girlish necklines . . .

Colors just tumble from one to the other . . . gay as a red-bird . . . bright as a blue jay . . . DRESSES for play time and dresses for Sunday . . . permanent piccolays and "smoothie" soft ginghams . . . eyelet embroidery and soft little silk ones . . . chambrays and shantungs with ruffly, shy petticoats . . . sizes to fit lassies from 7 to 14 . . .

NOW the same story will answer for wee, winsome "women" . . . TOTS-TO-TEENS has TINY TOWN TOGS for the just-out-of-rompers crowd . . . bib fronts and frills and short little skirts, bows and boleros . . . sizes 1 to 6x . . .

You'll find ROBIN HOOD SANDALS for toddlers and for big girls and Mary Jane slippers for partying and Sunday school . . . TODDLERS to 8 and young misses from 8 to 3 . . . color's the word in feminine footwear and prices will suit you . . . \$2.50 to \$3.50 at 519 Main.



TOTS TO TEENS

☆ ★ ☆

Let's Get Going...

Spring is HERE . . . make a bee-line to HARWIN'S for a 1952 BANNER BUY ELGIN . . . you can't AFFORD to face a NEW season when fish are leaping . . . mountain roads are unwinding from the snow and the whole outdoors is calling for a TIMEPIECE that will get you THERE and BACK on TIME . . .

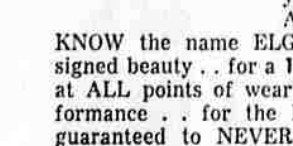
Be ELGIN conscious . . . be VALUE conscious . . . be HARWIN'S conscious . . . you WANT a DEPENDABLE timepiece . . . you KNOW the name ELGIN stands for custom-designed beauty . . . for a 17-jewel movement jeweled at ALL points of wear . . . for CONTINUOUS performance . . . for the Durapower MAINSPRING, guaranteed to NEVER break, rust or lose it's power . . .

You're LOOKING for a WATCH . . . you may have seen an ELGIN ad but you're STILL not sure . . . there's only ONE way to settle the question . . . go to HARWIN'S and SEE the big selection of these ELGIN BANNER BUYS . . . brought back this year because of the TREMENDOUS demand in 1951 . . . so MANY were disappointed last year that HARWIN'S had to help you get your heart's desire.

BANNER BUY styling is ELGIN coordination styling in which all component parts, dial, case, hands, figures, bracelets—HARMONIZE and are blended into single pieces of HANDSOME JEWELRY . . .

Thanks to ELGIN'S watchmaking ADVANCEMENTS . . . HARWIN'S can offer you a STUNNING men's or women's TIMEPIECE for as little as \$33.75 INCLUDING the federal tax . . .

Don't let the grass grow under your feet . . . start that bunny-hop now to "Your Friendly Jeweler" where you get S & H Green Stamps with every purchase . . . where credit is easy to establish . . . where you're greeted with a smile . . . 701 Main,



KNOW the name ELGIN stands for custom-designed beauty . . . for a 17-jewel movement jeweled at ALL points of wear . . . for CONTINUOUS performance . . . for the Durapower MAINSPRING, guaranteed to NEVER break, rust or lose it's power . . .

You're LOOKING for a WATCH . . . you may have seen an ELGIN ad but you're STILL not sure . . . there's only ONE way to settle the question . . . go to HARWIN'S and SEE the big selection of these ELGIN BANNER BUYS . . . brought back this year because of the TREMENDOUS demand in 1951 . . . so MANY were disappointed last year that HARWIN'S had to help you get your heart's desire.

BANNER BUY styling is ELGIN coordination styling in which all component parts, dial, case, hands, figures, bracelets—HARMONIZE and are blended into single pieces of HANDSOME JEWELRY . . .

Thanks to ELGIN'S watchmaking ADVANCEMENTS . . . HARWIN'S can offer you a STUNNING men's or women's TIMEPIECE for as little as \$33.75 INCLUDING the federal tax . . .

Don't let the grass grow under your feet . . . start that bunny-hop now to "Your Friendly Jeweler" where you get S & H Green Stamps with every purchase . . . where credit is easy to establish . . . where you're greeted with a smile . . . 701 Main,

HARWIN'S

We're Excited! W-H-E-E!

YOU'LL be excited TOO . . . not about the FIRST robin . . . no siree . . . not about Grandfather's toupe . . . not about a new baby brother but about the PREVIEW of perfectly precious EASTER NOVELTIES at the PELICAN CANDY JAR.

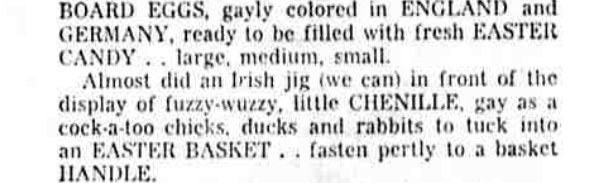
Here is the first REAL hint that the EASTER BUNNY is busy rolling CANDY EASTER EGGS toward the PELICAN CANDY JAR to go along with the "take-you-back-to-childhood" CARDBOARD EGGS, gayly colored in ENGLAND and GERMANY, ready to be filled with fresh EASTER CANDY . . . large, medium, small.

Almost did an Irish jig (we can) in front of the display of fuzzy-wuzzy, little CHIENILLE, gay as a cock-a-too chicks, ducks and rabbits to tuck into an EASTER BASKET . . . fasten pertly to a basket HANDLE.

You'll want to cuddle to your heart the snow white lambs, natural as the ones that jump stiff-legged across yon pasture . . . to take RIGHT home the stately mother DUCK and two bright eyed ducklings tucked beneath her wings . . . she'll QUACK her way into your fond affections . . .

The PELICAN CANDY JAR has SCADS of EASTER BASKETS . . . fill them BRIMMING full with SWEETS of your OWN choosing . . . you'll be seeing Mr. and Mrs. BUNNY BOXES, to be filled with candy kisses and HOOPER'S fine chocolates and assorted EASTER EGGS . . . CARTONED eggs, the ones that took the folks by storm in 1951 . . . foil WRAPPED eggs . . . CHOCOLATE candy, big and little RABBITS . . . CHICKS of ch' cest chocolates and BASKETS filled with chocolate BONBONS . . .

Easter is a THRILLING time for small fry . . . really as EXCITING as a CHRISTMAS day . . . and we SUSPICION that it's true that grown-ups get a thrill from hiding eggs away . . . so make this happy time a bit more thrilling . . . the CANDY JAR most certainly is willing . . . to help you with the FINEST CANDIES, the cleverest NOVELTIES at wee prices. 5c up at 722 Main, the



PELICAN CANDY JAR

☆ ★ ☆

Don't Be Influenced

by snow and hail and windy weather . . . forsythia WILL bloom . . . the clouds WILL blow by . . . Spring WILL come and you WILL want to meet it with a home that SHINES . . . SO even if snowflakes tumble earthward and wild winds frolic . . . be PREPARED . . . order your CLEANING needs from CARTERS' . . .

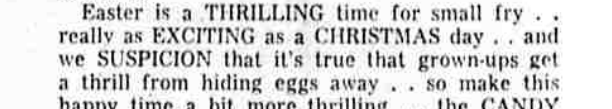
Chase those stubborn stains on COPPER with a special copper cleaner . . . brighten your rugs and overstuffed furniture with MIRACLE FOAM, whipped light as a swan feather . . . sun and air and BIF-SPRAY will kill the moths and chase all odors far away . . .

Send scot skyward with soot REMOVER poured upon wood coals or mixed to order in fuel oil for your furnace . . . scrub rust and stains with ZUD . . . be generous with sweet smelling ammonia mixtures . . .

Whip WOOL FOAM into a lather and suds those woolen blankets . . . leaves them soft as a baby's skin and never harms the color . . . try PARFUME . . . the scented DRY CLEANING fluid for fabrics that can't be laundered . . . shine windows . . . brush corners . . . scrub floors . . . wipe walls, clean bed-springs, and bottles with specially made BRUSHES and BROOMS . . . try CELLULOSE SPONGES . . . they'll do everything but mind the baby . . .

CARTERS' has washable SHELF PAPER and DUSTING PAPER that picks up dust and holds it fast . . . SILVER SHEETS to keep your arm from breaking while you rub and scrub your STERLING . . .

You'll WANT to hustle home, roll up your sleeves, get out the knee pads and dig right in after you've seen ALL the CLEANING gadgets WE saw at "Your Most Thoughtful Grocer's", 1420 Esplanade,



CARTERS'

the Sensational New

NORGE

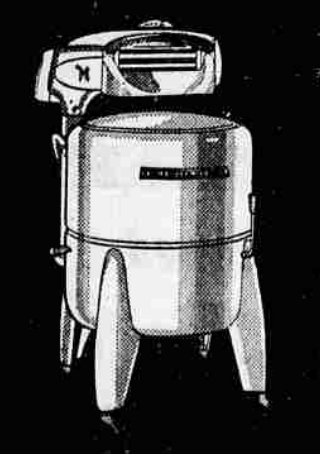
See Our Display AUTOMATIC WASHER

with the Amazing New **time-line** Work Saver



Only **\$342** Weekly After Minimum Down Payment **FREE HOME TRIAL** No Obligation

Special Offer This Month Only
With America's --- Whitest - Washing - Washer



The new **NORGE Triple-Action WASHER**
You Get All This **FREE**

- Full size clothes drying rack
- 2 Doz. Gay Colored Clothes Pins
- Deluxe Clothes Cart on Wheels
- 6 Months Supply of Rad Soap

Plus all these exciting new features!

- Norge Exclusive Wave Action Agitator
- 4 Different Rinse Actions: Overflow, Agitated Overflow, Agitated Deep Wave and 2 Spray Rinses
- Non-bolt-down Construction
- Flush-to-wall Design
- Trouble-free Borg-Warner Transmission

let time-line do your work!



Out of this World for you!

Use Your Old Washer As Down Payment
If value equals minimum down payment
Pay As Little As 6.85 Per Month

Suburban Kitchen Center

Southern Oregon's Largest Appliance Center

11th and Walnut See The Barber Shop Parade April 12th Phone 7709
Tune In Suburban's Serenade Time, 6:30 KFLW, Monday Through Friday