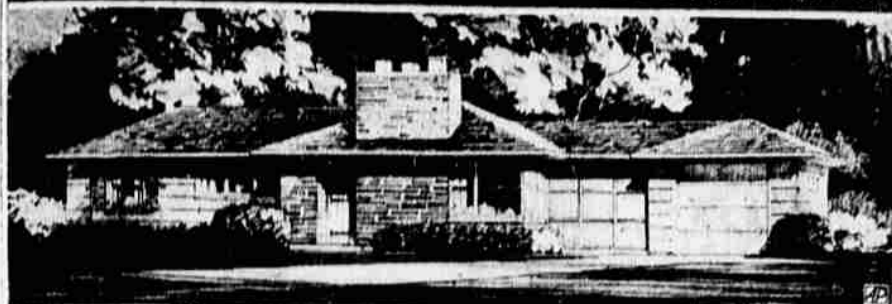


HOMES FOR AMERICANS



Wise Gal Arms in Advance

NEW YORK — (NEA)—It's a wise woman who knows that she's providing for spring and summer to come when she buys resort fashions in winter. However, to buy well and get the most for her money, she should arm herself in advance with a knowledge of fashion significances.

With such knowledge, she can choose fashions that will take hold, that will not die in infancy. This season, she should watch for dresses with little tops.

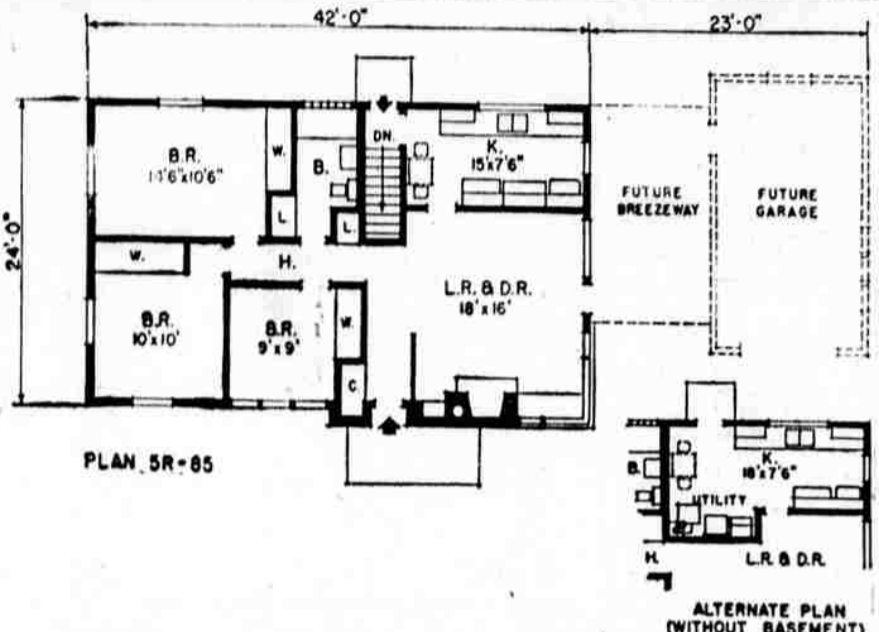
These little tops are jackets or capelets used in contrast to spreading skirts. The jacket may be Empire or it may be slightly longer. Both the princess silhouette and the coat dress are important in resort collections. The coat dress is years younger than it was in seasons past and often very dressy.

Sleeves are shapely, frequently terminating just below the elbow in an easy puff. Full sleeves sometimes blossom wide at a three-quarter length and are shown just as often with a slim skirt as with a full one.

From the resort-into-spring collection of designer Paul Parren, comes the coat dress done in several versions. One is a slim pale pink linen fastened with rhinestone buttons. It has crisp white touches in collar and cuffs.

A second coat dress, in silk shantung, is clear white touched with coral at the V-neckline and side pockets. Rhinestone buttons also glitter here.

The little jacket appears in white plique over a sheath dress in sheer black crepe. A pleated skirt, slim in repose, full in motion. Black velvet is used as collar trim against the white of the jacket.



A MASSIVE CHIMNEY and stone framed entrance give this house of wood construction with wood siding just enough masonry to make its facade distinctive. Economy is a key-note of the plan. Simple rectangular in shape and with kitchen and bath close together, the house keeps building costs within range. This is plan 5R-85 by Elmer Gylleck, 120 S. Grove Ave., Elgin, Ill. Without garage and breezeway, the house covers 1,050 square feet, a size that is practicable under current materials restrictions. With a complete basement the house contains 19,850 cubic feet. Basementless construction with alternate kitchen plan shown in the inset deducts 5,230 cubic feet.

ON THE HOUSE

By DAVID G. BAREUTHER, AP Real Estate Editor

If you want something that will floor you, try rubber tile, asphalt tile, cork, linoleum, vinyl or the rest of the composition and plastic materials that come in ready-cut squares. They're all easy to install with the proper know-how and instructions are available from your local dealer in flooring covers or from department stores.

This material, now available in at least 15 colors with a variety of gay picture designs for accents, provides a luxury floor covering for kitchens, bathrooms and other areas where easy-to-clean, long-wearing features are needed.

A different procedure is called for in laying these various materials. For example, with asphalt tile, you stretch a chalk line down the center of the room and start from the middle, because you can walk on this flooring immediately. Rubber tile and cork tile, on the other hand, will slip underfoot, so such paving is started at one side. Until a third or more of the floor is laid it is walked on.

Detailed instructions, including special kits of tools required for the job, and special cements for each type of tile, can be obtained from dealers.

this figure, your dealer can tell how many tiles you will need. Lay a row of loose tiles across the room. This will show you how much space must be divided to allow for borders of equal width on each side.

Then stretch and snap a chalk line along the longest wall at its exact width of the border. Fit the border tiles to conform. From this stage, the laying of border and mantles proceeds according to the manufacturers' directions, expanding or contracting borders to conform with an even number of tiles in the center.

Borders are cemented down and then the field tiles are cemented. For spreading adhesive, use a notched trowel or spreader with notches 3-32 inch deep, 3-32 inch wide and 1-8 inch apart. Spread six or eight feet of adhesive at a time, and set the tile immediately. A gallon of adhesive is supposed to cover 90 to 100 square feet—this means a kitchen 9 by 10 to 10 by 10 feet.

In cementing down the field tiles after three borders are laid, start in one corner and carry three or four rows across the room.

professional do the work. However, so many people tackle the work themselves that special kits, including all tools, chalk cords, etc., are on the market and have sold in hundreds of thousands to date. The Kettle people contend that they have made instructions so complete that the average handyman can follow them with complete success.

Old razor blades have been used for a long time for cleaning paint from windows and other odd-job scrapings. The new fall-winter issue of the Family Handyman, now on the news stands, reports that when broken up, these blades make fine glaziers' points. A pair of pliers will produce at least a dozen glaziers' points out of one double-edged blade.

Still Has To Shave
Newest toiletries for men are designed to help make a fellow feel handsome, well groomed and look it, too. For the man who prefers showers to baths, there's a man-sized bath mitt that's soap and wash cloth in one. After his morning shower, he can reach for a special skin cream (if he has a sensitive skin), that helps prepare his face for daily whisker removing. Then, if he desires a facial while shaving, he can use a new shaving cream containing ozone, that acts as a skin bracer, too.

If a sudden after office hours appointment arises, and there's hardly time or place for a shave, he can apply a new product that looks like his wife's pancake make-up and is applied the same way. For the traveling man, toiletry items such as cologne, hair tonic and talc come conveniently packaged in squeezable plastic bottles.

Hat for Every Hairdo

There'll be a hat for every hairdo this spring. This prediction comes from the American Hair Design Institute, and just in the nick of time, too. Ladies who've gone all out for those curly crew-type top-knots—poodle, young furs, poodle, pony-tail—will have no fears about finding a hat to balance on those short locks.

The trend to upswept locks determines the hat shape for spring. Hairdressers and milliners have dovetailed their creative efforts, and the result is a smart wardrobe of chapeaux, including sailors, rockers, bonnets, berets and flat-tops, flattering frames for pert coiffures.

There's more than one way to pin a hat, too. One smart gray-brimmed pillbox with yellow straw center can nestle prettily on top of a poodle cut or can be worn with a gay forward tilt over the forehead. This is typical of the versatility of this season's saucy hats.

The modified poodle coiffures with waves, swirls, fluffs and puffs has gone to the head of the older woman, also, says the hair design institute. Even she can find a hat to please her.

Appliances Promising
The latest electrical appliances make cooking and cleaning easier, quicker and more efficient than ever, and promise a most pleasurable Spring for homemakers. The new push button control stove that makes cooking possible with a flick of the switch assures easy cooking. Also an important kitchen help is the waste disposal unit. This device can be installed in the sink and the dinner refuse simply scraped down the drain.

Hartfields

Spring Opening

Come in and see our wonderful array of new Spring fashions . . . suits, coats, blouses, sportswear, lingerie, and hosiery . . . from New York and California to you.

COATS and TOPPERS
Specially purchased for this event. 100% all wool rayon gabardines, plaids, solids, checks, novelties.
7⁹⁹ to 24⁹⁰

HUNDREDS OF BEAUTIFUL
NEW SUITS
14⁹⁹ TO 29⁹⁹
Substantial savings in . . . rayon shark-skins, checks, strayers, sheen gabardines in pastels and dark spring shades.

DRESSES
5⁹⁹ TO 19⁹⁹
New spring and Easter dresses in every material and for every occasion.

DELIGHTFUL TO OWN . . . HARTFIELDS WONDERFUL COLLECTION OF SMART NEW **BLOUSES**
Delightful to own . . . to wear! Hartfield's wonderful collection of smart new—in white and a rainbow of radiant colors and materials.
Moderately priced from **1⁹⁹ To 5⁹⁹**

SKIRTS
Sheen gabardines, checks, novelties, satins, picolays, cottons in solids, prints and quilts.
2⁹⁹ To 6⁹⁹

Hartfield's Famous "Luxury" **Nylon Hosiery**
ULTRA SHEEN
51 GAUGE 15 DENIER **79c pr**
BOX OF 3 PAIR **2.25**

Easter Lingerie
Slips: Lace trimmed and tailored, nylon crepes and cottons. **1⁹⁹ up**
Bras: Every size, style and material. **1⁰⁰ up**
Panties: Non-run Bemberg and nylons. **39c up**

AVAILABLE IN BOTH SINGLE AND TWO-MANUAL MODELS

ORGANS
● connsonata
● baldwin
"Anyone can play these organs"

BAND INSTRUMENTS
kyle morgan ● SELMER
pianos ● BUESCHER
● HOLTON

"yours for a happier future through music"

Hartfields
737 MAIN ST.