

Official Nod Given All Home Gardeners

By CYNTHIA LOWRY
AP Newsfeatures Writer

The Department of Agriculture, once again, has given its official endorsement to the encouragement of the home gardener interested in food preservation.

It is a highly debatable point whether the home gardener actually ever needs encouragement, but one may presume that a nod from official sources has the effect of directing his attention more to the direction of fruit- and vegetable-raising and directing his attention somewhat from flowers.

Seedsman and horticulturists also do their share in stimulating the interests of the home gardener by constantly producing new types of fruits and vegetables which most hobby gardeners are tempted to try.

This year, for instance, the All-American selections include two gold medal awards. One is a new bush snapbean named "Wade" which judges in most parts of the country found to be highly productive, with attractive, round and stringless pods. The second is "Salad Bowl" lettuce, heat-resistant, loose-leaved, tender and sweet. It is especially recommended for home garden use. Both were developed by the Department of Agriculture.

Silver medals were received for a heat-resistant, heavy-bearing snapbean called "America," and for a solid-fleshed pumpkin, "Almick." Honorable mention went to a French horticultural bush bean, "Stringless Hort."

No gold medals were passed out in the flower classes this year, but "Fiesta" cosmos picked up a silver medal. It blooms early, is a bushy type and grows over two feet high. But the big news about "Fiesta" is that it brings a real scarlet hue to the range of cosmos colors. It self-sows, too.

Honorable mentions were received by three new strains of dwarf, fringed petunia of a rich salmon color. "Petition Carpet" zinnias bring rich oriental colors to an excellent edging plant.

The All-American selections, of course, are being on the garden and hold a place of distinction in the front of the year's crop of seed catalogues. There are lots of other new and improved seeds and many of the old standbys have a level headed set.

They are doing great things in the way of developing small-size vegetables and fruits now, for the small garden and the small family. Some of them are fascinating.

Midwest corn, for instance, is a tried and true garden standby, with ears from four to six inches in length and as tender and heady as any of the larger varieties. There are also watermelons and muskmelons, too, as well as the small varieties of tomatoes.

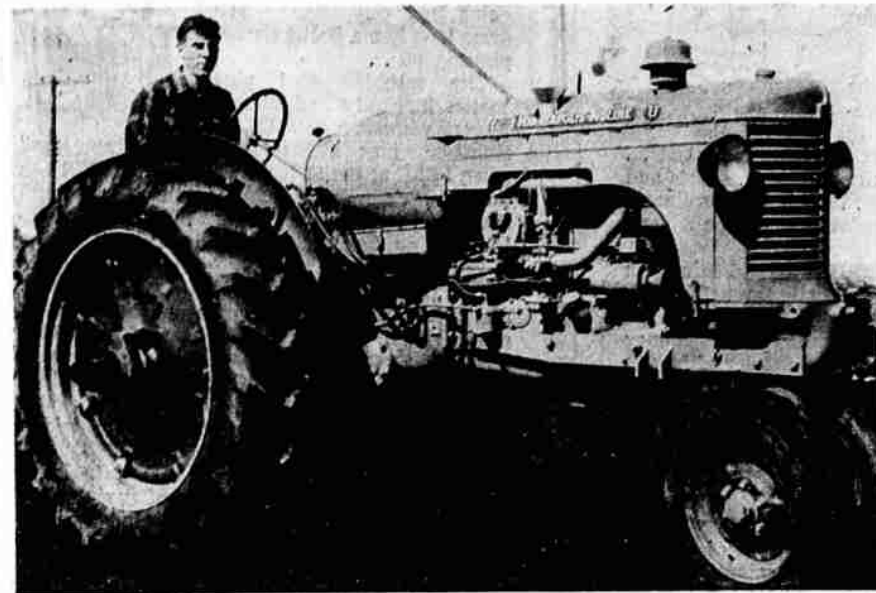
SAFE PROCEDURE

For the beginner gardener, however, it's best to stick to recognized and established varieties. Pick a reputable seedsman and take his recommendation for the best varieties of your local climate and soil. You'll have to decide your own such important items as whether you like a short stub-nosed carrot better than a long, tapering one, or little round red buttons of radishes better than a white root which looks like an apple.

In any event, study the seed catalogues carefully, read the descriptions and decide early what you would like to grow. Send in your seed order also early—after you have made your garden plan and discovered how much you'll have room for.



BOMBARDIER TRACTOR TRACK, a Canadian made track to provide traction when going S. heavy, is shown here by Mac's Farm Equipment on S. 6th. Here it's mounted on a TO-30 Ferguson tractor. Behind is a side-delivery hay rake.



MINNEAPOLIS-MOLINE'S UTU liquid-petroleum powered factory equipped Minnie, with Phil Holt, Malin, up. The tractor shows 46 horsepower on the drawbar, and is a three or four plow tractor. This one's on display at Byron Johnson's near the Big Y.

FASHION PUTS SPECIAL EMPHASIS ON THE EYES

By BETTY CLARKE
AP Newsfeatures Beauty Editor

Fashion has put special emphasis on the eyes. It doesn't seem possible that we ever got along without eyebrow pencil, mascara and that touch of eye shadow.

We have learned how to use these beauty props so that eye makeup does not look theatrical. We enhance our eyes so that eyebrows and lashes are colored merely to complement or contrast with the natural color of the eyes. And we use it with discretion.

The brown-eyed girl chooses either brown or green eyeshadow, blue eyes take blue, blue-gray, violet, or turquoise. Gray eyes are flattered by gray, blue, blue-gray or turquoise eyeshadows, depending upon the exact shade of eyes. Few women wear eyeshadow for daytime appearance, but it is fun to use for evening wear.

The eye-liner is indispensable to the girl who wants her eyes to appear larger. This is applied in a very fine line along the inner corner of the eye about a quarter of an inch. The fine corner line can be brushed lightly in toward the eye with the finger, if a more subtle effect is to be achieved.

Two eyebrow pencils are used usually by makeup men. These are applied in alternate feathery strokes to get a natural effect. Each stroke is about the size of a brown lash. The velvet-black pencil is combined with either the dark brown, light brown or auburn for brunettes. Blondes will prefer a light brown pencil, and redheads either a light brown or auburn pencil. The pencil is never drawn in a motion eye makeup can be removed quickly and easily. The pulling also helps stimulate the circulation, perhaps increasing the growth of the lashes.

dered, with some powder clinging to the lashes, mascara is applied with a damp brush, beginning at the base of the lashes and swooping upward and outward to their tips. The brush should never be too wet. Experts suggest that after the lashes have had time to dry, you should go over them with a clean dry brush to separate the hairs and remove any surplus mascara that may be clinging to them as well as to separate lashes if they have stuck together after makeup has dried.

When making up lashes for evening, a second application of mascara will give you a more dramatic look to the eyes. Some girls claim that eyes look larger if mascara is applied only to the tips of the lashes, and this is worth an experiment. Pretty eyes are tired eyes, of course. When eyes are tired they put years to a woman's face, so don't expect eye makeup to do miracles—no makeup will make a woman look younger if she is tired and drawn. Here is a good exercise, particularly if it is done during the winter time when cold, biting winds are likely to make the eyes look tired.

Stare at something about forehead level, then without removing your eyes from the object swing your head to the extreme right and then left. Do this ten or twenty times. At night fill an eye cup with a good eye solution or your own boiled acid and warm water, and wash the eyes.

Never go to bed leaving mascara on the lashes. It can be removed in a jiffy by folding a damp washcloth in half, catching the lashes in the fold. With a gentle pulling motion eye makeup can be removed quickly and easily. The pulling also helps stimulate the circulation, perhaps increasing the growth of the lashes.

NO-PARTY VOTERS ARE FOOLING ONLY SELVES

By CYNTHIA LOWRY
AP Newsfeatures Writer

Around this time every year—and particularly at this time every four years—we hear a lot about a large, nebulous, unorganized group of enfranchised American citizens called "independent voters."

In each local state and national—particularly national—election, these politically unattached adults are the courted darlings of the two major parties. The courtship steps up in intensity from August—after party candidates have been picked—to election day.

During this period, the independent voter gets to feeling his power. After all, it's obvious that he is the guy who is the determining factor at the polls. Democrats and Republicans alike exhort the workers to get out and attract these voters to their side.

And the independent voter, his (or her) importance made so obvious by adoring swains in the shape of donkey and elephant accept the wooing.

Personally, I think the identification of this large group is irritatingly incorrect. My own choice of words would be "half voters." In the first place the proud independent voter—unless he writes in the name of some personal choice—is less independent than the average party member. In a final analysis, he is confronted with a choice (in a presidential year) between two major party candidates, each one picked as a result of a democratic process in which he takes no part and from which he has completely excluded himself.

The prideful boast of the voter without political affiliations invariably is that "I vote for the best man." Usually, this is a pretty simple choice between two men. He has stood by voiceless and with his opinion unknown through the preliminary maneuverings which involve vitally important things like primary votes and conventions. Secondly, to call a voter without party affiliations an "independent voter" is an indirect slur and implied insult to millions of thinking, independent-minded men and women actively participating in a functioning two-party system of government and who are willing to stand up and be counted.

not necessarily have to have unpleasant connotations—know that the independent isn't the most reliable voter in the world. He's apt to come out in presidential years. He's apt to slay away from the polls the other three, unless there's some big, wonderful, exciting issue to catch his attention.

Almost all of the evils commonly laid on the doorstep of organized politics, from the capture of a community by a corrupt machine to the patronage appointments of incompetents, trace directly back to lack of political activity on the part of men and women who fail to use the vote properly. The so-called independent voter, whose political activity involves merely going to the polls on election day, certainly must shoulder a big hunk of any blame which is to be passed around.

At the moment, the presidential lists are wide open. The names of a double handful of men are being mentioned in connection with presidential candidacies. The independent voters, not enrolled in either party, are powerless to indicate, except conversationally, the way they feel about any of them. They can't vote in the primaries to send delegates representing their choice of "the best man" to political conventions. All they can do is wait and see—and criticize, too—what is given them to make a choice between.

Within the ranks of enrolled voters, the party faithful are one group, the ones who can be depended upon to support the ticket and buckle down to the time-consuming and frequently tedious task leading to getting out the vote. There is another group within the walls of party membership, too, the truly independent voter who participates in his government by the intelligent use of the ballot at what frequently is the most important level: the primary, intra-party vote.

EASY TEND APRONS
New aprons, with the look and feel of satin or other fabric, are made of plastic that can be wiped clean with a damp cloth. Especially designed for kitchen wear while entertaining at home, the new apron styles range from permanently-pleated half aprons to invisibly lined bib aprons.

Turn of Century Influence Noted

Dresses will go everywhere, do everything this Spring. For whether designed as a single unit, jacket ensemble or two-piece frock, new lines and details ready the dress to stand alone and hold greater importance in wardrobes than in seasons past.

Simulated effects of boleros, redingotes and gilets appear as cleverly manipulated trim on dresses. Other dresses bloom forth, from beneath their jacket companions, with new decorative touches and fluttering décolleté necklines. Even two-piece ensembles have single unit outlooks with tiny, gently molded jackets, like spencers that end just below the bustline, and

skirts, that are lined to emphasize their femininity, used generously.

And over all, helping to stress the importance of the dress, appears the return of turn-of-the-century fashions with frocks, for every hour of the day, strongly influenced by the lady-like designs of that fabulous era.

Also in evidence, and just as femininely pleasing for Spring, is the princess line, the elongated torso line and the Empire feeling. Typical of dresses inspired by turn-of-the-century fashions, are those that hang straight and slim at front, and full at back, with

great emphasis placed on sleeves just as during that period.

In some instances, sheath-slim dresses are created with full-blown organza sleeves which can button in or out to meet the demands of the occasion. The importance of sleeves is also seen in ruffled capelet types and oversize puffed designs.

Newest of the princess line dresses are those that team with princess line redingotes, both slim from shoulders to hemline, then flared out at the skirt. Lending elegance to the slenderness of princess silhouettes are collarless necklines and newly popular sleeve

Two famous fashion editors

help you select the correct shoes for your new spring wardrobe!



Jackie Dempsey, fashion editor Photoplay



Ruth Drake, fashion editor Redbook

see their selections featured in our store and windows now!

Trim Tred



\$895 to \$1295

asked these two famous fashion editors to help you make your new Spring outfit a success by selecting their favorites from our new Spring line. We have these fashion-right TRIM TRED shoes on display in our store and windows... come in and see them today. These are the same shoes now being featured in Redbook and Photoplay magazines along with the comments by these famous style authorities. These smart, beautiful shoes are sensibly priced, too.

Your Friendly Family Footwear Store

VAN ORMAN'S

527 Main



Time to be thinking of your farm equipment needs

SEE OUR BIG EQUIPMENT DISPLAY

Downtown - Friday
March 14
12:00 to 6:00 p.m.

YOUR CATERPILLAR and JOHN DEERE DEALER

Crater Lake Machinery Co.

1410 S. 6th

Phone 2-2544

... time to remember that we're in business to serve you... that Crater Lake Machinery Co. backs the earning power of all "Caterpillar" and "John Deere" equipment in the Basin! Look to us for superior parts... for superior service facilities.

Spring is here!







TIME FOR US TO GIVE YOUR TIRES OUR EXPERT SERVICE!



HAS WINTER DRIVING DAMAGED YOUR TIRES?

Don't take unnecessary chances this Spring with tires that have been abused during the winter months. A Goodyear tire check up will give you trouble-free Spring driving. Use our 6-point plan to extend the life of your tires. Drive in for this expert service... NOW!

Here's how our complete expert service EXTENDS TIRE LIFE!

 <p>Complete INSPECTION We remove casings and tubes from rims to check for body bruises and breaks, tread cuts and tube injuries. Inspect monthly for puncturing objects.</p>	 <p>Repair CUTS AND BRUISES Cuts and bruises can result in punctures and blowouts. Our repairs are made to last as long as the tire—factory methods and materials are used.</p>
 <p>Correct AIR PRESSURE Too much, or too little air results in lost mileage. We check pressure weekly with an accurate gauge... make sure valves and caps don't leak.</p>	 <p>Periodical TIRE ROTATION Tread wear is different on each wheel. We rotate tires periodically to distribute wear evenly on all tires... increase mileage up to 25%.</p>
 <p>WHEEL BALANCING We check wheel balance when inspecting tires. Correct wheel balance saves tire and wheel parts... helps end rough riding.</p>	 <p>TIRE TREADING A sound tire, worn smooth, will give many extra miles service with new Goodyear tread. We use factory methods, plus the best treading stock.</p>



GOOD YEAR SERVICE STORE

8th and Klamath

Phone 8141