

MARKETS and FINANCIAL

All Grains Suffer Losses Today

CHICAGO (AP) — All grains sank on the board of trade Monday. Losses ran to around a cent or a little more, but the market held above the lows established last week.

Selling was most pronounced in wheat and corn. Moisture in the dry areas of the southwestern winter wheat belt caused liquidation of the bread cereal. Corn continued to meet hedging pressure as another large run of high moisture grain showed up here and at other terminals.

Oats, rye and soybeans followed the other cereal down. Lard showed occasional signs of strength.

Wheat closed 1 1/2 to 2 cents lower, March \$2.51 1/2-2.52, corn 1/2-1 1/2 lower, March \$1.75 1/2-1.76, oats 1/2-1 1/2 lower, March 81 1/2-82, rye 1 1/2 to 3 cents lower, May \$1.94 3/4, soybeans 1 1/2-2 1/2 lower, March \$2.95 1/2-2.95, and lard 3 to 13 cents a hundred pounds lower, March \$11.65.

Wheat	
Mar	2.53 1/2
May	2.50 3/4
July	2.44 1/2
Sept	2.45 3/4
Dec	2.48 3/4

Quotations

New York Stocks	
By The Associated Press	
Admiral Corporation	27 3/4
Allied Chemical	26 1/2
Allis Chalmers	48 1/2
American Airlines	14 1/2
American Power & Light	24 3/4
American Tel. & Tel.	155 1/2
American Tobacco	60
Anaconda Copper	49 1/2
Atchafalpa Railroad	75
Bethlehem Steel	48 1/2
Boeing Airplane Co.	48 3/4
Borg Warner	17 1/2
Burrhus Adding Machine	16 1/2
Canadian Pacific	34 1/2
Caterpillar Tractor	50 1/2
Celanese Corporation	45
Chrysler Corporation	68 1/2
Citrus Service	105 1/2
Consolidated Edison	33 3/4
Consolidated Vultee	17 1/2
Crown Zellerbach	56 1/2
Curtiss Wright	8 3/4
Douglas Aircraft	85 1/2
duPont de Nemours	44 1/2
Eastman Kodak	14
Emerson Radio	55 1/2
General Electric	42 1/2
General Motors	50 1/2
Georgia Pac Plywood	20 1/2
Goodyear Tire	43 1/2
Homestake Mining Co.	38 1/2
International Harvester	33 1/2
International Paper	47 1/2
Johns Manville	65 1/2
Kennecott Copper	79 1/2
Libby, McNeill	8 3/4
Lockheed Aircraft	20 1/2
Loew's Incorporated	18 1/2
Long Bell A	39 1/2
Nash-Kelvinator	19 1/2
New York Central	19 1/2
Northern Pacific	70 1/2
Pacific American Fish	34 1/2
Pacific Gas & Electric	34 1/2
Pacific Telephone	111 1/2
Packard Motor Car	4 3/4
Penney (J.C.) Co.	68 1/2
Pennsylvania R.R.	18 1/2
Pepsi Cola Co.	8 3/4
Philco Radio	24 1/2
Radio Corporation	24 1/2
Rayonier Incorp	62 1/2
Rayonier Incorp Pfd	41 1/2
Republic Steel	60 1/2
Reynolds Metals	55 1/2
Richfield	30 1/2
Safeway Stores Inc.	30 1/2
Scott Paper Co.	51 1/2
Sears Roebuck & Co.	52 1/2
Socoony-Vacuum Oil	36 1/2
Southern Pacific	63 1/2
Standard Oil Calif	68 1/2
Standard Oil N.J.	75 1/2
Studebaker Corp.	33 1/2
Sunshine Mining	10 1/2
Swift & Company	31 1/2
Transamerica Corp.	23 1/2
Twentieth Century Fox	18 1/2
Union Oil Company	38 1/2
Union Pacific	111 1/2
United Airlines	28 1/2
United Aircraft	30 1/2
United Corporation	5 1/2
United States Plywood	32 1/2
United States Steel	38 1/2
Warner Pictures	40 1/2
Western Union Tel	25 1/2
Westinghouse Air Brake	35 1/2
Westinghouse Electric	42 1/2
Woolworth Company	42 1/2

Stock Market Gains Little Ground

NEW YORK (AP) — The stock market gained a little ground Monday at one of the slowest sessions in nearly eight months.

Prices turned upward late in the session after wavering between slight gains and small losses.

The volume ran at around 1,000,000 shares for the session, the same as last Friday and the smallest since last July 11.

Portland Grain

PORTLAND (AP) — No coarse grains quotations.

Wheat (bid), to arrive market, basis No. 1 bulk, delivered coast: Soft White 2.54; Soft White (excluding Rex) 2.54; White Club 2.54; Western Red 2.54.

Hard Red Winter: Ordinary 2.54; 10 per cent 2.54; 11 per cent 2.54; 12 per cent 2.54.

Hard White Baart: Ordinary 2.54; 10 per cent 2.54; 11 per cent 2.54; 12 per cent 2.54.

Car receipts: Wheat 70; barley 27; flour 11; corn 13; mill feed 11.

Portland Poultry

EGGS — To wholesalers: Cans: Canada; eggs containing no loss, cases included, I. O. Portland: A large 43 1/2c; A medium, 42 1/2c; B grade large, 38-39c.

Eggs—To retailers: Grade AA large 40c; A large 45c; AA medium 45c; A medium 45c; cations 2c additional.

Live chickens—No. 1 quality, I. O. plants: Fryers, 2 1/2-3 lbs, 30c; 3-4 lbs, 30c; roasters 4 lbs and over, 30c; light hens, all weights, 18c; heavy hens, all weights, 21c; old roosters, all weights, 13-15c.

Portland Livestock

PORTLAND (AP) — Cattle: Saleable 1,600; holdover 100; market slow on increased supply; predominant supply fed steers selling around 50 cents lower; some bids off more; early sales cows about steady; but most bids on utility-commercial beef cows 25-30 cents lower; load choice 1,102 lb fed steers 35.00; load 1,238 lbs 34.25; other good-choice 950-1,158 lb fed steers 32.00-34.00; few commercial steers 29.50-31.50; utility 23.00-28.00; few good fed heifers 32.00-25; commercial grades 28.50-31.00; cows largely 17.00-20.00; few 20.50-21.00; utility cows mostly 21.00-25.00; part load 1,178 lbs commercial cows; 27.50; commercial bulls 28.50-29.50; utility grades 25.00-28.00.

Calves: Saleable 125; market active, steady; choice-odd prime vealers 35.00-38.00; commercial-good calves, vealers 27.00-30.00; few utility grades 23.00-26.00.

Hogs: Saleable 700; market about steady with early last week; choice 180-235 lbs mostly 20.00-25; few lots 20.35; choice 260-310 lbs 28.00-50; choice 300-350 lb sows 17.00-30; 400-475 lbs 15.00-16.50; few heavier weights 15.00; heavy slaughter hogs down to 7.50; choice 68-87 lb feeder pigs 18.00-50.

Sheep: Saleable 350; market about steady; good-choice 81-109 lb fed wooled lambs 26.50-27.00, including one lot choice 118 lbs 26.75; choice 130-146 lbs 24.00; odd utility-grade ewes 13.00-13.00.

District Court

Lewis A. Linn, drunk on highway. Sentence 30 days.

Clark Prestfield, drunk in public place. Sentence 3 days.

Heleen F. Seutter, violation basic rule. Fine \$10.

Israel Gladus, no operator's license. Fine \$5.

Neil M. Arant, no PUC permit. Fine \$15.

Gordon B. Crosley, overload. Forfeit \$50 ball.

George H. Reagan, inadequate brakes. Fine \$10.

Gordon McKay, putting rubbish on highway. Fine \$25.

Walter A. Harris, driving in suspended period. Fine \$100.

John W. Waldrip, violation basic rule. Fine \$12.50.

Richard J. Barlow, no PUC permit. Fine \$15.

Dale Himelewright, passing on hill crest. Plead not guilty. Recognized.

Municipal Court

Rudolph Cheraldo, drunk. Fine \$13 or 7 1/2 days.

Wayne Byrd, vagrancy. Sentence, 5 days.

Johnny Hawkins, Jesse Trullio, vagrancy. Sentence, 10 days.

James Hart, vagrancy. Fine \$100 and 30 days, suspended.

H. W. Weston, vagrancy. Fine \$100 and 50 days, suspended.

Carl Crane, drunk. Fine \$25 or 12 1/2 days.

Ansel Clecker, drunk. Fine \$15 or 7 1/2 days.

Raymond Pompey, drunk. Fine \$20 or 10 days.

Buffy Shorty, drunk. Forfeit \$15 ball.

Charles Ellis, drunk. Sentence 30 days.

James Ellis, violation parole. Held for federal authorities.

Joel V. Stewart, drunk. Fine \$15 or 7 1/2 days.

Duffy, drunk. Fine \$20 or 10 days.

Rudolph Cheraldo, drunk. Forfeit \$13 ball.

Melecio Rodriguez, drunk. Forfeit \$15 ball.

Charles Daly, drunk. Forfeit \$15 ball.

Huid Torres, drunk. Forfeit \$13 ball.

Martin Martinez, drunk. Fine \$15 or 7 1/2 days.

On the Record

BIRTHS

NELSON—Born at Klamath Valley Hospital, Mar. 2, 1932, to Mr. and Mrs. Swan Nelson, 2743 Dayton St., a girl. Weight: 6 pounds 13 1/2 ounces.

LOZANO—Born at Klamath Valley Hospital, Mar. 2, 1932, to Mr. and Mrs. Carmen Lozano, Chiloquin, Ore., a boy. Weight: 6 pounds 1 1/2 ounces.

UTLEY—Born at Klamath Valley Hospital, Mar. 2, 1932, to Mr. and Mrs. George Utley, 422 Autumn Ave., a boy. Weight: 8 pounds 3 ounces.

VALENTINE—Born at Klamath Valley Hospital, Mar. 2, 1932, to Mr. and Mrs. William Valentine, Oretch, Ore., a girl. Weight: 8 pounds.

GRIFFIN—Born at Klamath Valley Hospital, Mar. 1, 1932, to Mr. and Mrs. Lawrence Griffin, Sily, Ore., a girl. Weight: 7 pounds 8 1/2 ounces.

PARKS—Born at Klamath Valley Hospital, Mar. 1, 1932, to Mr. and Mrs. Dean Parks, Sprague River, Ore., a girl. Weight: 8 pounds 13 ounces.

CRESPEN—Born at Klamath Valley Hospital, Mar. 2, 1932, to Mr. and Mrs. Damien Crespen, Sprague River, Ore., a boy. Weight: 8 pounds 13 ounces.

CAVANAUGH—Born at Klamath Valley Hospital, Mar. 1, 1932, to Mr. and Mrs. Bernard Cavanaugh, 2127 Cabie St., a boy. Weight: 8 pounds 2 1/2 ounces.

MALLORY—Born at Klamath Valley Hospital, Mar. 2, 1932, to Mr. and Mrs. Harold Mallory, route 2, box 80, Klamath Falls, a boy. Weight: 6 pounds 13 1/2 ounces.

ROBER—Born at Klamath Valley Hospital, Mar. 2, 1932, to Mr. and Mrs. Robert Roper, 4223 Clinton St., a girl. Weight: 7 pounds 8 1/2 ounces.

BRITTON—Born at Klamath Valley Hospital, Mar. 3, 1932, to Mr. and Mrs. Murray Britton, 402 Victory Dr., a boy. Weight: 10 pounds 1 ounce.

PORTERFIELD—Born at Klamath Valley Hospital, Mar. 2, 1932, to Mr. and Mrs. Don Porterfield, Tulelake, Calif., a boy. Weight: 7 pounds 13 1/2 ounces.

Weather

Western Oregon — Rain Monday morning, becoming showery and clearing partially Monday afternoon or Monday evening. Partly cloudy and cooler Monday night. Tuesday cloudy with rain by Tuesday afternoon and evening. High both Monday and Tuesday 40 to 50. Lows Monday night 32 to 42. Westerly to northwesterly winds of 20 to 30 miles an hour off coast Monday.

Eastern Oregon — Rain or snow Monday or Monday night. Partly cloudy with snow flurries; mostly over mountains, late Monday night and Tuesday. Highs both Monday and Tuesday 32 to 42. Lows Monday night 15 to 30.

Grants Pass and vicinity — Showers mixed with snow Monday, decreasing Monday night. Cloudy Tuesday with occasional showers. High Monday 40. Low Monday night 29. High Tuesday 38.

24 hours to 4:30 a.m. Monday			
	Max.	Min.	Precip.
Baker	36	15	
Bend	41	22	T
Eugene	51	41	.01
La Grande	35	25	T
Lakewood	32	14	
Medford	47	20	
North Bend	50	45	.17
Ontario	38	20	
Pendleton	2	32	
Portland	49	41	.07
Roseburg	52	47	
Salem	51	2	.05
Boise	37	32	
Chicago	31	21	.1
Denver	23	13	.16
Eureka	50	44	T
Los Angeles	60	33	
New York	38	34	
Red Bluff	57	37	T
San Francisco	55	47	T
Seattle	45	39	T
Spokane	38	28	



FLORAL TOUCH—Camellias are appropriate background for Betty McDonald, 19, of Daytona Beach, Fla., after selection as Queen of Camellia Festival in Cypress Gardens, Fla.



YOUNG LEADER—French Prime Minister Edgar Faure, 43-year-old Radical Socialist (Conservative) lawyer, is one of the youngest men ever to guide Republic's government.

SHE BUYS IT—Women, who buy 85 per cent of all neckties sold, base their selection on color, men on pattern, according to the Men's Tie Foundation. Women's successful buying psychology is attributed to a highly developed sense of color. While men, on the other hand, have an incidence of color blindness.



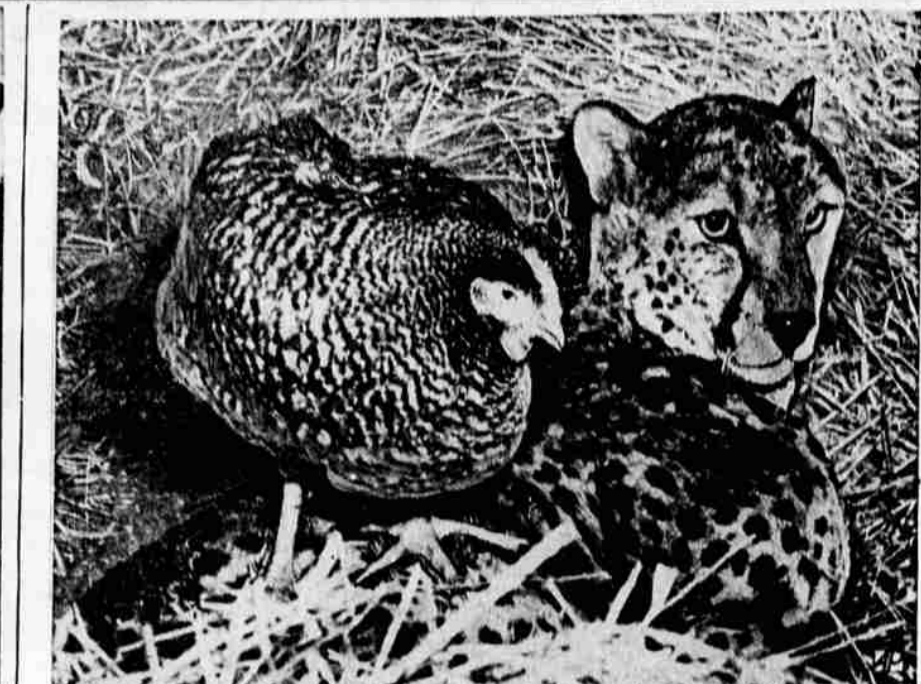
SIDELINE CONVERSATION—Katy Redolph (center), Hayden, Colo., member of 1932 U. S. Women's Olympic ski team, chats with two Austrian girls on sidelines during ski events in International Sports Week at Bad Gastein, Austria.



HARNESSING ANDES WATERPOWER—Water from Andes is fed by penstocks into generating station of Saual hydro-electric plant to furnish power for Santiago, Chile.



SUPPORTING JET POWER—King-sized tires checked at Goodrich Akron, Ohio plant were developed for use on Air Force's B-47 jet bomber and can support 24 1/2-ton load.



A TEMPORARY SITUATION—"Friendly" proximity of chicken to cheetah in Chicago's Coliseum probably did not last since feline had no appetite for preferred fowl at photo time.



THE BIG LIFT—Vera Stanley demonstrates ease with which King Midget, a new two-seater weighing 500 pounds, can be lifted and "walked" into a tight parking spot in Akron, Ohio.

Obituary
KNOWLES
Robert Edward Knowles, 67, a native of Texas and a resident of Klamath County since 1923, died in this city March 2, 1932. Survivors include a daughter Mrs. Willis Nagler of Coquille, Calif.; two brothers, P. K. Knowles of Keno, Wash., and Charles K. Knowles of Portland. Funeral services will be held from O'Hair's Memorial Chapel Tuesday, March 4 at 2 p.m. The Rev. Daniel B. Anderson of the Klamath temple officiating. Interment will be made in Klamath Memorial Cemetery.

SPRAY AWAY
Prevent moths in upholstered furniture by occasional spraying with moth preventatives. Regular and thorough vacuum cleaning and brushing, however, usually avoids moth damage.

FOR YOUR CHOICE
There are two basic style categories in men's neckwear, bows and four-in-hands. But within these two categories there are as many as fifty different styles. Average length of a tie is from forty-seven to fifty-four inches.

FROM "OVER THERE"
There's a continental influence to be seen in new Spring fashions. Italy offers spirit and color. Spain offers exotic trims and shapes. France offers a chic over all effect that can be found in fashions of every season and every year.

Funeral
FULLER
Funeral services for Dale Edward Fuller, 46, who died here Feb. 29 will take place from the chapel of Ward's Klamath Funeral Home, Wednesday, March 3, 1932 at 10 a.m. Officers of the Klamath Falls Lodge no. 1247, B.P.O. Elks, officiating. Commitment service and interment in Klamath Memorial Cemetery.

LET IT GLEAM
Wash costume jewelry in any liquid shampoo and see how fresh and gleaming it immediately becomes.

MIRRORS
for any Room in the Home!
Calhoun's
Main

Doing without advertising is like winking at a pretty girl in the dark...

... you may know what you're doing but nobody else does!

WANT-AD WONDERS Trade Mark

Famed Battlefield Of World War I Sold via Want Ad

HILL 60 — This historical site, being the only intact portion of the Ypres sector, with pill boxes, dugouts, etc., is for disposal. For full particulars, apply owner's sole agent, L. C. Poyard, A. A. 21 The Broadway, Bromley Kent.

Following World War I the English agent of the owner of a battlefield area in the Ypres section of France used a Classified ad in the London Times to find a buyer.

Want Ads Can Sell Anything

15 to Best reader of each true newspaper Classified Advertising result story we accept. Howard Park, Box 128, NW Dr. Miami 47, Fla. 3-2

A Complete COMMERCIAL ENGRAVING Service
Metropolitan QUALITY Local SERVICE Phone 8111
Herald and News KLAMATH FALLS, OREGON

Here In Klamath Want Ads Work Wonders
HERALD & NEWS
In the Ph. 8111

Herald and News
Ph. 8111 for Illustrations, Copy Writing, Layout