

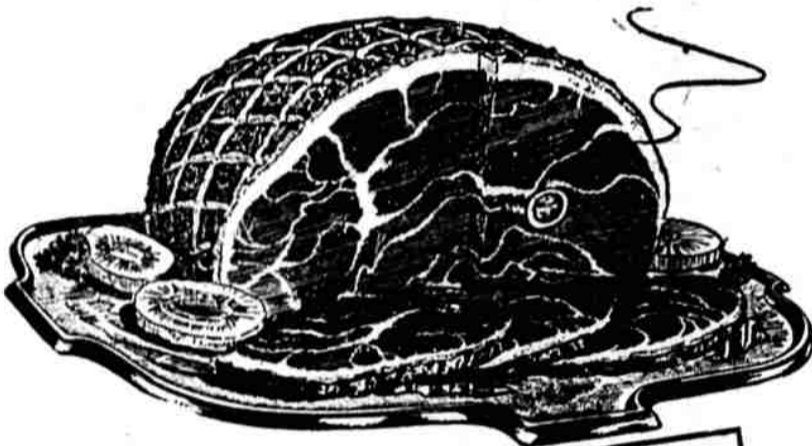
OUTSTANDING VALUES in SAFEWAY MEAT SECTIONS

- Pork Loin Roast Loin or Rib-end cut lb. **45^c**
- Pork Chops Lean caper cuts lb. **68^c**
- Pork Steaks Meaty blade cuts lb. **49^c**
- Pork Shoulder Roast lb. **39^c**
- Veal Roasts Leg or rump cut lb. **94^c**
- Veal Steaks Shoulder cuts lb. **89^c**
- Veal Chops Lean rib cuts lb. **98^c**
- Leg o' Lamb Roast lb. **99^c**
- Lamb Shoulder Roast lb. **79^c**
- Beef Chuck Roast Blade cut lb. **75^c**
- Beef Swiss Steaks Top quality lb. **98^c**



Look at these Values!

HAMS Half or Whole lb. **59^c**



Here's wonderful eating at a very special price this week end. What could be more appropriate to have around the house when the gang drops in for a snack. These are top quality, flavorful smoked hams—you can not buy a better one.

- Fancy Tuna Mid Sea brand, fancy solid pack Tuna Fish. Wonderful for salads and sandwiches. No. 1/2 can **23^c**
- Tomato Catsup Dennison brand fancy quality catsup. Color and pep for your meat dishes, etc. 14-oz. bot. **19^c**
- Sandwich Spread Lunch Box Brand Pint 29^c QT. **57^c**
- Boneless Beef Anglo Brand, tender young beef deliciously packed in its own flavorful juice. 12-oz. can **49^c**
- Tomato Juice Sunny Dawn brand. Nice to have around the house 'comes the sunny dawn. 46-oz. can **25^c**
- Golden Peaches Penthouse Brand - luscious halves or slices at this unheard of low price. No. 2 1/2 can **25^c**

A Good buy for your New Year's Dinner

TURKEYS

Plenty of dark meat on plump drumsticks and mammoth breasts loaded with tender, juicy, white meat. Ready to cook.

3 to 8 lb.	8 to 16 lb.	over 16 lb.
lb. 75^c	lb. 73^c	lb. 65^c

- FRESH FRYERS** Ready for the pan lb. **69^c**
- DUCKLINGS** Long Island lb. **69^c**
- OYSTERS** Fresh and tasty pt. **69^c**
- SHRIMP** Blue Plate, Breaded 10-oz. **63^c**
- SLICED BACON** Standard lb. **45^c**
- SLICED BACON** Fancy lb. **55^c**
- WIENERS** Tender, meaty lb. **65^c**
- LUNCH MEATS** Large variety lb. **59^c**
- Minced Ham—Veal Loaf—Spiced Lunch Loaf—Pickled Pimento—Macaroni & Cheese—Smoked Liver Sausage—Liver Loaf

- PARKAY** Margarine 1-lb. **34^c**
- ROYAL SATIN** Shortening 3-lb. can **93^c**
- BILTMORE** Tuna Morsels No. 1/2 can **29^c**
- Cheese Favorites** —KRAFT SPREADS—
 • Olive Pimento 5-oz. glass **22^c**
 • Pimento
 • Pineapple
 • Relish
- Sliced American** Dutch Milk 4-oz. **34^c**
- Sliced Pimiento** Dutch Milk 4-oz. **41^c**
- Sliced Swiss** Dutch Milk 4-oz. **35^c**
- Philadelphia** Cream Cheese 4-oz. **18^c**
- Sparkling Soft Drink** —CRAMONT—
 • Ginger Ale 32-oz. bottle **2/27^c**
 • Tom Collins
 • Lemon Lime
 • Root Beer
 • Orange
 • Whiskey Sour
- CANADA DRY—
 Sparkling Water—28-oz. **20^c**
 Ginger Ale—28-oz.
 Tom Collins—28-oz.
 Coca Cola and 7 Up **6/25^c**
- Delicious Chinese Foods** JAN-U-WINE BRAND
 • Soy Sauce 5-oz. bottle **20^c**
 • Chow Mein Noodles 1/2 lb. **20^c**
 • Chop Suey Veg. No. 2 can **30^c**
 • Bean Sprouts No. 2 can **14^c**
- Chun King Oriental Dinner** No. 303 can **58^c**
- Grade A Medium EGGS** Doz. **57^c**
- SNOWDRIFT Shortening** 3-lb. can **99^c**
- BRADSHAW Honey** 24-oz. jar **45^c**

- Cranberry Sauce** OCEAN SPRAY 2 cans **35^c**
- Hi Ho Crackers** Crisp and tasty 1-lb. pkg. **33^c**
- Cheese Food** Van Zee Brand 2-lb. pkg. **83^c**
- Facial Tissues** Country Club 300s **2/35^c**
- Maraschino Cherries** RAW 4-oz. **17^c**
- M-C-P Lemon Juice** 7 1/2-oz. **14^c**
- Sugar Belle Peas** No. 308 can **16^c**
- Vienna Sausage** Libby 4-oz. can **23^c**
- Breakfast Sausage** Rath 2-oz. can **43^c**
- Shady River Shrimp** Small 5-oz. can **32^c**
- Sild Sardines** Prince Paul No. 1/4 can **18^c**
- Whipping Cream** Fresh Pint **59^c**
- Reddi-Wip** Topping 7-oz. can **52^c**
- Ballard Biscuits** 7 1/2-oz. pkg. **14^c**
- Shady Lane Butter** 1 lb. **84^c**
- "AA" Large Eggs** Cream of the Crop Doz. **72^c**
- Nob Hill Coffee** 1 lb. **75^c**
- Nob Hill Coffee** 2 lbs. **1.49**
- Airway Coffee** 1 lb. **73^c**
- Airway Coffee** 2 lbs. **1.45**
- Edwards Coffee** 1 lb. **77^c**
- Edwards Coffee** 2 lbs. **1.53**
- Stuffed Olives** Grandee Home Style 3-oz. **32^c**
- Libby Pickles** Columbia 13 1/4-oz. **25^c**
- Kosher Dills** Columbia 22-oz. **39^c**
- Sweet Pickles** Columbia whole Pt. **31^c**
- Mrs. Wright's Bread** 1 1/4-lb. **22^c**
- Krispy Crackers** Sunshine 1-lb. **31^c**
- Roasted Peanuts** Hoody's 12-oz. **29^c**
- Kitchen Craft Flour** 10-lb. bag **99^c**
- Potato Chips** Blue Bell 4-oz. **25^c**
- Korn Kuris** Tasty pkg. **19^c**
- Brown Sugar** C&H 1-lb. **14^c**
- Powdered Sugar** C&H 1-lb. **14^c**
- Cigarettes** Popular brands otn. **\$1.59**
- Alka-Seltzer** Small size **29^c**
- Alka-Seltzer** Large size **54^c**
- White Magic Soap** Reg. pkg. **30^c**
- White Magic Soap** with opn. Giant **59^c**
- White Napkins, Zee** 50's **2/25^c**

Prices in this ad are effective through Monday, December 31, at Safeway Stores

ARIZONA, SEEDLESS, WHITE Grapefruit!

Sweet, juicy, white-meat desserts of Arizona... Buy 'em by the bagful and save

8-lb. bag 49^c

NAVEL Oranges Enjoy them in sparkling fruit salads. Here is a wonderful value. **5-pound mesh bag 49^c**

FUERTES Avocados Full ripe fruit. Serve in a delicious salad for dinner tonight. **2 for 23^c**

Roman Beauty Apples Bake them 2 lbs. **25^c**

Tokay Table Grapes Juicy 2 lbs. **25^c**

Fresh Broccoli Pick o' the Crop lb. **15^c**

Crisp Celery Sweet and tender lb. **12 1/2^c**

Boiler Onions Flavorful 5-lb. bag **39^c**

Potatoes Economy Large and Small 10-lb. bag **69^c**

Mixed Salad 8-oz. cellophane pkg. **10^c**

Juicy Lemons Rich in juice lb. **20^c**

Sweet Potatoes Uniform size 2 lbs. **29^c**

Large Navel Oranges Seedless 2 lbs. **25^c**

- HAPPY NEW YEAR!! SAFEWAY**
- Camay Soap Reg. Size 3 Bars **27^c**
 - Personal Ivory 4 Bars **25^c**
 - Oxydol Soap Reg. Size 32 Giant Size **83^c**
 - Duz Soap Giant Size **83^c**
 - Joy Liquid Soap Bottle **32^c**
 - White King Soap Giant Size **63^c**