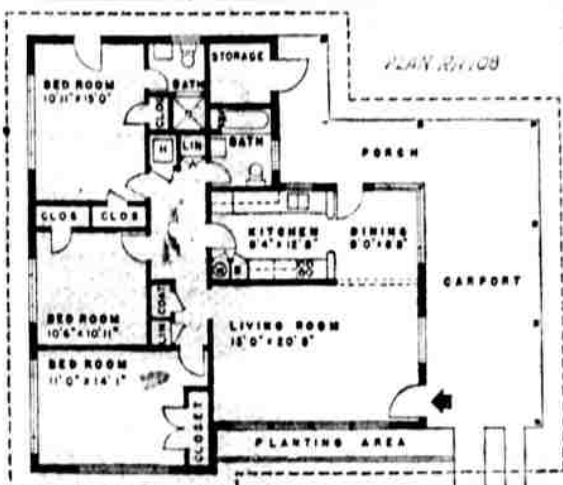


HOMES FOR AMERICANS



CONTEMPORARY IN STYLE without being extreme, this house shows the trend in the Southwest. Plan RH-108, it was designed by Roy F. Flish, architect, 41 West Jefferson St., Phoenix, Ariz. Sponsored by the Southwest Research Institute, it features quality details in its construction. The glass wall in front of the living room is shaded by a four-foot overhang. The exterior is faced with painted pumice cement blocks. Grouping of the two baths, heater closet and kitchen economizes on plumbing. Exclusive of carpet and porch the house covers about 1,300 square feet.

Navy Brass Defends Stand On Emergency Leaves

TOKYO, (AP) — Far East navy headquarters today said a flood of requests from navy personnel for emergency leave last August resulted in an order emphasizing that such cases must be real emergencies to be granted. The explanation was given in answer to complaints printed in the Oakland, Calif., Tribune from some sailors who said emergency leaves had been banned. One sailor allegedly was court-martialed for writing to his senator after his request for leave was rejected. An Associated Press story Saturday said the allegations were forwarded by Far East navy headquarters to task force 77 off North Korea for comment. Headquarters released the following reply: "The directive apparently referred to in the Associated Press story on 17 November, datelined Oakland, Calif., was issued by commander task force 77 on 11

if continued. There was also concern over the demands on air and surface transportation which ultimately might prevent obviously worthy cases from being accommodated. "It was not the task force commander's intention to prohibit the approval of emergency leave in worthy cases, where a bonafide emergency existed and where an individual's presence at home would serve a real purpose. "Nor was the reference to the

value of Red Cross recommendation in any sense a slight to the valuable service that organization performs. It was merely the task force commander's desire to emphasize that there are often many other factors which must also be

weighed in considering when leave should be granted in a combat theater and that most careful screening of requests was essential if the purposes of emergency leave were not to be circumvented."

Rent a Spinnet
PIANO
Apply toward later purchase, if desired
LOUIS R. MANN
Piano Co.
120 N. 7th St.

taste it...
you'll love it...

Welch's Wine

Your eyes say buy. Your palate says buy again! Yes, even if you've never tasted wine before, you'll love the just right sweet full-bodied flavor of Welch's Wine. Millions do! So look for the name Welch... next time you buy wine. Taste it. You'll love it!

Welch's
Sweet WINE

1951. QUALITY IMPORTERS, INC., NEW YORK, N. Y.
Produced and bottled by THE WELCH GRAPE JUICE COMPANY, at the winery, Brocton, N. Y.

State Civil Defense Man Visits Here

By HALE SCARBROUGH
Local leaders of the civil defense organization met with Jack Hayes, state director, and other state civil defense officials yesterday for a discussion of the aims and progress of the organization in Klamath county. It was the first time the state defense leaders had come here to take a look at what preparations Klamath county is making to take care of itself in event of war or natural disaster. The program here, now directed by Joe V. LaClair, is surprisingly well along. But it falls short of what the state defense agency eventually will expect from Klamath. The assignment is, Hayes said, for the local defense organization to have on call 116 police reserves, five pieces of fire equipment (pumpers) in addition to those needed for normal safety, seven medical first aid teams, two mobile hospital teams, two mobile welfare teams and two rescue units. Their purpose will be primarily to protect and render disaster aid in this locality; secondarily the purpose will be to lend assistance throughout the county; and finally to be ready to lend aid anywhere as directed by the state agency. Here with Hayes for the session were: Thomas Bruback, coordinator of public information; George Emigh, leader of aid and welfare; Bob Sandstrom, coordinator of administration; Franklin Westphell and Dr. Robert M. Heilman of medical services.

Paralytic Safe After Ordeal

GRANTS PASS, (AP) — With her husband dead from a heart attack, Mrs. Ralph Amos Geist, a helpless paralytic, narrowly escaped death from exposure after struggling out of bed to search for him. The death of the man and the plight of his widow were discovered by a neighbor late Saturday. Deputy Sheriff Les Tythcott reported that Geist, 69, lay beside a tree which he had felled 199 yards from his home in the Kerby area. Mrs. Geist lay on the floor of her bedroom. She is being treated in a rest home here, where she is reported out of danger. Because of her condition, the woman could not be questioned but Geist's death probably occurred Friday, Tythcott said. Try the New Corona Portable Typewriter at Pioneer Office Supply Co., 629 Main.

STILL BOSS
PORTLAND, (AP) — Directors renewed the contract of Walter A. Holt as general manager of the Pacific International Livestock exposition here. W. E. Williams, president, said the 1951 exposition produced the "finest livestock show in history."

PINE TREE THEATRE
TODAY
APARTMENT for Peggy
TECHNICOLOR
ON THIS STREET YOU CAME IN CONTACT WITH ALL THE VIOLENCE IN CRIME
RICHARD WIDMARK
MARK STEVENS
THE STREET WITH NO NAME
Matinee 1:00
Evenings Doors Open 6:45

FOR A LIMITED TIME . . .
We Pay You Up to \$100.00
for Your Old Range

Yes—up to \$100 on your present electric range—on the purchase of a new Philco Electric Range Model 418, 417 or 417D.

PHILCO ELECTRIC RANGE
the Greatest Electric Range of All Time!

IT'S true—we pay you to rid yourself of kitchen drudgery—and enjoy clean, cool, automatic electric cooking never before possible in any range. Only Philco with its new exclusive features can bring you such complete cooking convenience. See it now and compare. Special offer is limited. Hurry!

BUILT-IN JIFFY GRIDDLE
equal to two extra surface units
Cooks marvelous meals in a jiffy... pancakes, bacon, eggs, steaks. Slides out when needed—slides back in when not in use. Yours in Philco Model 418 (shown) and 417.

BROIL-UNDER-GLASS
true Smokeless Broiling!
Gives you the tastiest, juiciest broiled foods you ever put in your mouth... and without smoke, soot or stain. Yours only in the new Philco Electric Range.

IN ADDITION Double Ovens (Model 418) or huge Banquet Oven plus Deep Well Cooker (Model 417 and 417-D) • Automatic Timer Clock • Interval Timer • High-speed Surface Units • 2 Pan Storage Drawers • Full 40-inch Width

MERIT'S
609 So. 6th Phone 2-3429

New Easier Credit Terms
TAKE 78 WEEKS TO PAY!

CHOOSE A WHITE FELT JEWELLED, FEATHERED, VEILED, ONLY 7.95 FROM OUR WINTER WONDERLAND OF HOLIDAY MILLINERY

La Pointe's
IT'S A WONDERFUL STORE