

MARKETS and FINANCIAL STOCK AVERAGES

Compiled by The Associated Press

	30 Ind.	15 Rails	15 Util.	60 Stocks
Net change*	A 5	A 3	A 1	A 4
Wednesday	99.8	38.9	42.8	70.7
Previous day	99.3	38.5	42.7	70.3
Week ago	97.8	38.1	42.6	69.5
Month ago	95.2	35.4	42.4	67.3
Year ago	88.4	38.7	38.9	64.1

SALES FORCE WHEAT DOWN

CHICAGO, Dec. 14 (AP)—Selling pressure directed at December wheat knocked that contract down more than 3 cents at times on the board of trade today. Weakness in December wheat unsettled the rest of the grain market, although July wheat held steady.

Last day for trading in December contracts is December 20. There appeared to be liquidation in the December deliveries by buyers who were not anxious to obtain grain. The downturn came in the face of substantial export business by the private trade.

Wheat closed 2 1/2% lower to 1/2% higher, December \$2.20 1/2-%, corn was unchanged to 1/2% lower, December \$1.31 1/2-%, oats were unchanged to 1/2% lower, December 77 1/2-%, rye was 1/2% lower to 1/2% higher, December \$1.41 1/2-%, soybeans were 1/2% higher, December \$2.30 1/2-%, and land was 10 to 22 cents a hundred pounds higher, December \$10.30.

Wheat—	Open	High	Low	Close
Dec.	2.23	2.23 1/2	2.19 1/2	2.20 1/2-%
March	2.21 1/2-%	2.21 1/2	2.18 1/2	2.14 1/2-%
May	1.96 1/2	1.97 1/2	1.96 1/2	1.96 1/2
Sept.				

Fast Trading Spurs Stocks

NEW YORK, Dec. 13 (AP)—The stock market moved into new high ground for 1949 today in the fastest trading of the year.

Heavy profit taking sales kept the advance in low gear. Despite frequent interruptions, though, steady progress was made.

Gains ranged from fractions to around a point—yith the startling exception of a 3 1/2-point jump in Superior Oil of California.

Turnover was above 2,000,000 shares for the full session.

High-priced Superior Oil advanced 3 1/2 to 191 at one time. The company disclosed a plan today to split itself into two new corporations, one taking the oil assets and the other the natural gas assets of the original business. Stockholders will vote on the proposal at a special meeting called for December 29.

Also up were Santa Fe, U. S. Steel, General Motors, Chrysler, U. S. Rubber, Montgomery Ward, Philco, American Smelting, Du Pont, American Woolen, Standard Oil (N.J.), Johnson & Johnson, and U. S. Gypsum.

Hanging back were several rubbers, distillers, and assorted industrial issues.

American Can	98 1/2
Am Power & Lt	14 1/2
Am Tel & Tel	146 1/2
Anacosta	28
Bendix Aviation	37
Beth Steel	32
Boeing Airplane	24
Calif Packing	36
Canadian Pacific	14 1/2
Case J I	39 1/2
Caterpillar	35 1/2
Chrysler	65
Coca Cola	10 1/2
Continental Can	37
Crown Zellerbach	29 1/2
Curtiss Wright	67 1/2
Douglas Aircraft	61 1/2
Dynaco	28 1/2
General Electric	48 1/2
General Foods	43 1/2
General Motors	70 1/2
Goodyear Tire	43 1/2
Int Harvester	29
Int Paper	68 1/2
Kennecott	50 1/2
Libby McN & L	7 1/2
Long-Bell "A"	21 1/2
Montgomery Ward	61 1/2
Nash-Kelvinator	18 1/2
Nat Dairy	38 1/2
N Y Central	10 1/2
Northern Pacific	19 1/2
Pac Gas & Elec	32 1/2
Pac Tel & Tel	103 1/2
Pennsey J C	54 1/2
Radio Corp	13 1/2
Rayonier	27 1/2
Rayonier Pfd	30 1/2
Reynolds Metals	29 1/2
Richfield	38 1/2
Safeway Stores	32 1/2
Sears Roebuck	43 1/2
Southern Pacific	49 1/2
Standard Oil Calif	65 1/2
Studebaker Corp	25 1/2
Sunshine Mining	10 1/2
Trans-America	15 1/2
Union Oil Calif	27 1/2
Union Pacific	63 1/2
United Airlines	13 1/2
U S Steel	27 1/2
Warner Bros Pic	16
Woolworth	47 1/2

LIVESTOCK

PORTLAND, Dec. 14 (AP-USDA)—Salable cattle 350, market active, steady to strong; sorted load good 1060 lb. fed steers \$23.00; medium \$21.00-23.50; few medium heifers \$18.50-21.00; common mostly \$15.00-17.00; light cutters down to \$11.50; canner-cutter cows \$11.00-12.50; common-medium beef cows \$13.00-16.00; good light cows up to \$16.50; good bulls \$17.50-18.00; common-medium sausage bulls \$14.00-16.50.

Salable calves 100; market active, strong; good-low choice vealers \$23.00-25.00; one lot medium-good 400 lb. calves \$22.00; bulk common-medium calves and vealers \$14.00-20.00; culs down to \$9.00.

Salable hogs 125; market rather slow, about steady with Tuesday's average; good-choice 180-230 lbs. largely \$17.00; few fat type and medium grade kinds \$16.50; good-choice 280-300 lbs. \$15.00-50; good 350-600 lb. sows \$13.00-14.00; lighter weights up to \$14.50; medium-good feeder pigs \$16.00-17.00; choice quotable to \$17.50; good 515 lb. stags \$12.00.

Salable sheep 300; market active, fully steady; good-choice fed lambs mostly \$21.00; medium \$19.00; common down to \$17.00; medium yearlings \$15.00; good slaughter ewes salable \$6.50-7.00; common down to \$5.00.

SOUTH SAN FRANCISCO, Dec. 14 (AP-USDA)—Salable cattle 125; supply mostly cows; early sales fully steady; Tuesday load medium 914 lb. steers \$25.00 small lots high medium 850 lb. heifers \$23.25; load good 1060 lb. beef top cows \$18.50; calves none; Tuesday odd medium vealers \$24.00-26.00.

Salable hogs 100; steady; good-choice 190-240 lb. butchers \$18.75; good sows \$12.50; few good 587 lb. sows \$13.00; Tuesday good-choice feeder pigs \$18.00-75.

Salable sheep 500; no early sales; Tuesday moderately active, steady; short deck good-choice No. 1 pelts and fall shorn 83 lb. lambs \$23.25; one lot medium fall shorn 81 lb. lambs \$22.00; deck good 128 lb. Oregon ewes \$11.50; common-medium ewes \$7.00-9.00; good feeder lambs \$21.50; medium 69 lb feeders \$19.00.

CHICAGO, Dec. 13 (AP-USDA)—Salable hogs 18,000; mostly 25 cents lower on all weights and sows; closed slow at decline with some bids around 50 cents lower; most good and choice 180-230 lb. 15-25-15.75; around one load 15.90; most 230-260 lb. 14.75-15.15; 260-310 lb. 14.40-14.85; bulk good and choice sows under 450 lb. 12-50-13.00; 475-600 lb. 11.25-12.25.

Salable cattle 7000; salable calves 600; steers and heifers slow; steers grading average-good and choice steady to 50 cents lower; common to low-good grades 50 cents to 1.00 lower; heifers steady to 50 cents lower; cows steady to strong; bulls weak; vealers strong to 50 cents higher; most good to low-choice steers 27.00-35.00; load 1120 lb. weights 36.50; bulk medium to low-good steers 20.00-26.50; common down to 18.00, most medium and good heifers 20.00-27.50.

Salable sheep 3500; not enough done on slaughter lambs to make a market; bidding weak to 25 cents or cents or more lower; yearlings weak; ewes steady; deck fed western ewes 9.00 for common end with good top end at 11.00.

POTATOES

CHICAGO, Dec. 14 (AP-USDA)—Potatoes arrivals 82 on track 267; total U. S. shipments 582; supplies moderate; demand good; market firm; Colorado Red McClurees \$2.75; Idaho Russet Burbanks \$4.00-6.00; Michigan round whites \$2.30; Minnesota-North Dakota Red River

Klamath Basin Potato Shipments

December 13	1948	1948
Month to date	244	435
Season to date	2182	3567

To Buy or Sell—Use the Want-Ads!

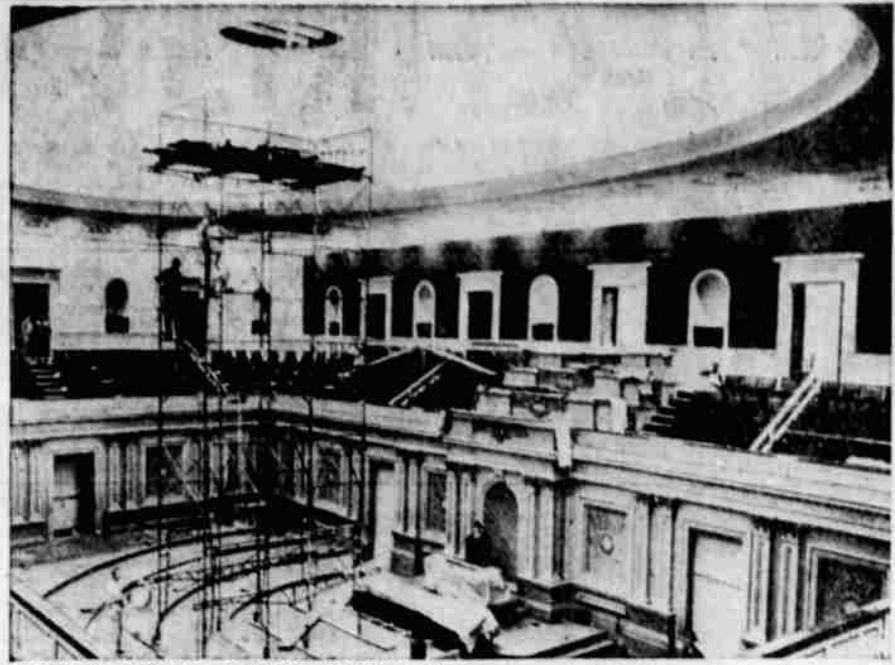


SHOP FRIDAY UNTIL 9 P.M.

Open Friday Nites 'Til Xmas

Santa will be at Wards 7 to 8 p. m. to bring free bubble gum to the kiddies.

Montgomery Ward



"VEEP" SURVEYS CAPITOL REPAIRS—Vice President Alben Barkley, on rostrum, looks over the new ceiling of the Senate Chamber. The white steel dome will have in its center a glass-and-bronze seal of the United States. Gone are the temporary steel girders which were put up in 1941 to bolster the sagging roof.



PACKETS ON PARADE—Four twin-engined, 64,000-pound Fairchild C-119 Packets fly over the plant at Hagerstown, Md., before moving to Air Force bases for cargo-transport use.

Tempo Slows At Florida White House

KEY WEST, Fla., Dec. 14 (AP)—Work at the temporary White House slowed down to little more than routine today.

President Truman delegated most of what there was to do to John R. Steelman, assistant, and Clark M. Clifford, special counsel.

They in turn delegated to staffers in Washington necessary leg and research work to get the "state of the union" message into shape for final consideration by the full cabinet before the last draft is written at the White House.

The president, it has been made clear, will urge congress in a personal appeal in January, for that part of the "Fair Deal" it refused to pass this year.

Portland Wheat

PORTLAND, Dec. 14 (AP)—Wheat: Cash wheat (bid); soft white \$2.20 1/2; soft white (excluding Rex) \$2.20 1/2; white club \$2.20 1/2. Hard red winter: Ordinary \$2.20 1/2; 10 per cent \$2.20 1/2; 11 per cent \$2.20 1/2; 12 per cent \$2.22.

Today's car receipts: wheat 39; barley 4; flour 5; corn 7; oats 3; millfeed 6.

Portland Potatoes

Potatoes—Oregon Deschutes Russets, No. 1A, \$3.75-3.90; 25 lbs. \$1.10; 15 lbs. 57-70c. No. 1s extras \$4.25-35. Wash. netted, No. 1, \$3.75-90; large bakers, \$4.25-50; No. 2, 50 lbs., \$1.15-20.



AMA'S EDITOR—Dr. Austin Smith of Philadelphia, above, is the new editor of the Journal of the American Medical Association, succeeding Dr. Morris Fishbein, who retired. Dr. Smith was named at the AMA meeting in Washington.

Families Flee Gas Fumes In California

OAKLAND, Calif., Dec. 14 (AP)—Upwards of 100 persons were forced to flee their homes before dawn today as waves of ammonia gas spread through 20 square blocks of West Oakland.

Scores were overcome and many made ill. Five were known to have been hospitalized.

A tank car, filled with liquid ammonia, was being pumped out at a fertilizer plant when a pipe split and the cargo spilled into the streets. Gas formed quickly.

Warning

Eight police cars, with sirens screaming, moved slowly through the residential area warning persons to flee.

Firemen attempted to wash away the ammonia with streams of water. It was several hours later before evacuees began returning to their homes.

Battalion Chief Thomas Dolan said the tank car contained enough ammonia to "kill everyone in the area."

Girl Murderer Convicted

OGDEN, Utah, Dec. 14 (AP)—A second district court jury took only 45 minutes last night to convict Ray Dempsey Gardner of first degree murder in the rape killing of Shirley Jean Gretzinger, teen-age baby sitter.

The jury did not recommend leniency. Under Utah law, this makes the death penalty mandatory for the 28-year-old Columbus, O., man.

The defense took only 30 minutes of the three-day trial to present its case. It attempted to show that Gardner was unbalanced and called only one witness, a Weber county jail inmate.

Miss Gretzinger, pretty 17-year-old high school student, was raped and choked to death the night of July 20.

SPUD BULLETIN

SAN FRANCISCO, Dec. 13 (AP-USDA)—Potatoes: 23 broken, 12 unbroken cars on track; arrivals: California 1, Oregon 2, market about steady; Klamath Russets No. 1-A, \$3.40-60; Deschutes \$3.80.

LOS ANGELES, Dec. 13 (AP-USDA)—Potatoes: 16 broken, 17 unbroken cars on track; arrivals: Oregon 2, California 2, Idaho 1, by truck 31; market firm on Russets, dull on long whites; Idaho Russets No. 1-A, \$3.75.

Under regulations of the federal communications commission a single owner can possess no more than five television stations.



"LINDY" HONORED—Charles A. Lindbergh, above, the famed "Lone Eagle," will receive the 1949 Wright brothers memorial trophy for outstanding public service in aviation over the past 23 years. The award will be made at the annual Wright brothers memorial dinner in Washington, Dec. 17. Lindbergh became a national hero overnight in 1927, when he made the first non-stop solo flight across the Atlantic.

Weatherman Had it Right

The weatherman often misses by a mile his forecasts for this high mountain country, but he hit it on the button yesterday when he promised snow flurries for today.

Folks woke to a light fall early this morning but overcast skies had failed to send down any more of the white stuff at noon today.

Mercury fell to 24 degrees in the morning and a low of 28 is forecast for tomorrow. "Cloudy" was the weatherman's prognostication for the next 24 hours.

Motorists could drive any place in Oregon today without using chains, the state highway commission said in its 9 a. m. road report. There were spots of ice on the Willamette pass, at Keno, LaPine and around Bend, but sanding crews were busy.

Heart Attack Fatal To Henry Keesee

Henry Wayne Keesee, 52, died of a heart attack yesterday at his home in Medford.

Keesee was born at Bonanza July 11, 1897, son of Mr. and Mrs. H. W. Keesee, and came to Klamath Falls at the age of 3. He attended public schools here and later taught in city schools both here and in Medford.

More recently he has been manager of the army post exchanges at Camp White, Mountain Home, Ida, Marysville, Calif., and Camp Stoneman, Calif.

He returned to Medford several months ago after becoming ill at Camp Stoneman.

Keesee is survived by his wife, the former Helen Conroy, and two children, Mrs. Louise Southerland of Ft. Lewis and Gerald Keesee of Medford; his mother, Mrs. Rose Keesee of Klamath Falls; brothers Vernon and William and sisters Mrs. Glen Guiley and Mrs. A. B. Wade.

Funeral arrangements will be announced from Medford.

20th CENTURY-FOX'S CHRISTMAS GIFT To Theatre Patrons All Over the World!



Samuel Goldwyn's
PRINCE OF FOXES
TYRONE POWER • ORSON WELLES
WANDA HENDRIX

OPENS DECEMBER 24th IN KLAMATH FALLS
SIMULTANEOUSLY WITH 400 CITIES IN
WORLD-WIDE PREMIERE!

Make your plans now! Be one of the first to see it
ESQUIRE THEATRE

Anna Lucasta

A great stage success... now a powerful motion picture

PAULETTE GODDARD

William Bishop • John Ireland • Oscar Homolka

BRODERICK CRAWFORD

Screen Play by Philip Yordan and Arthur Laurents
Based upon the play, "Anna Lucasta" by Philip Yordan
A SECURITY PICTURES PRODUCTION
Directed by IRVING RAPPER • Produced by PHILIP YORDAN

Full-length 2nd Feature
UP-IN-THE-CLOUDS ROMANCE!
DOWN-TO-EARTH THRILLS!

"AIR HOSTESS"
GLORIA HENRY • ROSS FORD • AUDREY LONG
A COLUMBIA PICTURE

NOT RECOMMENDED FOR CHILDREN

ESQUIRE

TODAY! You Need a Friend, Strong Man, AND I'M FRIENDLY!

MATINEE 1:30
EVENING 6:30



You'll meet them all on Thieves' Highway... men who drive by night — on the wrong side of the law... women whose every curve spells — DANGER AHEAD!

There's a new girl on Thieves' Highway... VALENTINA CORTESA — wait 'til you meet her!

LEE J. COBB — star of the Pulitzer Prize play "Death of a Salesman" — in his most dynamic role!

THIEVES' HIGHWAY

The Longest Stretch of Danger in America!...

RICHARD VALENTINA LEE J. BARBARA
CONTE • CORTESA • COBB • LAWRENCE
JACK MILLARD
OAKIE • MITCHELL

ADDED JOY!
LEON ERROL COMEDY
"I Can't Remember"
POPEYE CARTOON — NEWS