

Switch from Personal Property to Business Earnings Tax Pondered

PORTLAND, Nov. 22 (AP)—A proposal to replace the state personal property tax with a levy on net business earnings was discussed yesterday by the legislative interim tax committee.

Farmers, professional men and businesses would be included under the earnings tax. Committee members indicated it might raise or lower the taxes of some groups.

State Rep. Giles French tossed the plan before the committee. He said it would raise about the same amount of money but would simplify the tax structure for the average person. He complained the present personal property tax required a "five year study course" to understand because of the many exemptions.

French spoke of 2 per cent levy on net earnings as a working figure, but added "it wouldn't need to be higher than 2 per cent and might be lower."

His plan would return a share of the revenue to the counties to offset present collections from county personal property taxes.

C. C. Chapman, editor of The Oregon Voter and a speaker before the committee, said farmers and professional people likely would pay more taxes under such a plan. He said "lawyers have little personal property except their law libraries. A net income tax would bring a larger tax income from such sources."

Committee members indicated some farmers may pay less. These would be those with large machinery investments on which they pay personal property taxes. Poultry raisers, however, might pay more. They buy eggs in the spring and sell the birds in the fall and pay comparatively low personal property taxes compared to other farmers.

Attending the session were State Senators Howard Belton and Eugene Marsh, State Representative John I. Bell; Kelley Lee, a labor representative; Mrs. Louise Humphrey, Portland tax consultant, and Judge Earl Day, Medford.

30 Passengers Die in Attack On Burma Boat

RANGOON, Burma, Nov. 22 (AP)—Thirty passengers aboard an Irrawaddy river ferry lost their lives in a rebel attack on the vessel 40 miles south of Mandalay, according to reports reaching here today.

The ferry, traveling between the North Burma cities of Mandalay and Sagaing, sank in mid-river. Many of the 30 victims were drowned although others were killed by rebel machinegun fire as they struggled in the swift current, informed sources here said.

Twenty passengers reached shore safely, it was reported. The ferry was on a routine trip with civilian passengers and cargo.

Other reports said a large rebel band attacked a police station near Mandalay but were dispersed by government troops in armored cars. Twenty rebels were reported killed.

Norblad Loses Labor Support

PORTLAND, Nov. 22 (AP)—The secretary of the Oregon Federation of Labor said yesterday that Rep. Walter Norblad, republican of Astoria, would not have the union's support for re-election next year.

J. T. Marr, executive secretary of the union, said the AFL was opposed to Norblad because "we disapprove Norblad's attitude toward labor. We will support someone else, but we don't know now who it will be." Norblad is from Northwest Oregon's first congressional district.

Ninth annual meeting, Western Knights association, Army, Friday, 12th.

Static

By DAVE UNDERHILL

This is the time of day—it is 2 a. m. as this column is being written—when all sensible people are snuggled up under the covers saving up another cord of wood or continuing on with last night's dream interrupted by the early dawn.

But as "mad dogs and Englishmen go out in the mid-day sun," so do crazy cats and newspaper columnists work this late at night.

This time of the week it can all be blamed on the city council meeting and a morning deadline.

A humorous, under-the-breath, side remark emanated from the council last night that kind of caught my funny bone.

At this time of the year when liquor and restaurant licenses are being renewed, why wouldn't it be a good plan to furnish licenses or certificates of achievements to all Klamathites who can successfully operate the varied types of parking meters dotting our city streets? This is a unique feat all in itself,

deserving of some type of recognition.

At last the man has his day, and we hope it is not in the dog house that he spends it.

Mutual-Don Lee has a special treat for men on its Thanksgiving "Queen For a Day" program, broadcast over JI at 11:30 a. m.

The week-day Cinderella program, which normally honors women listeners and studio guests on each broadcast, will snub the little woman and pick its "King For a Day" on Thanksgiving.

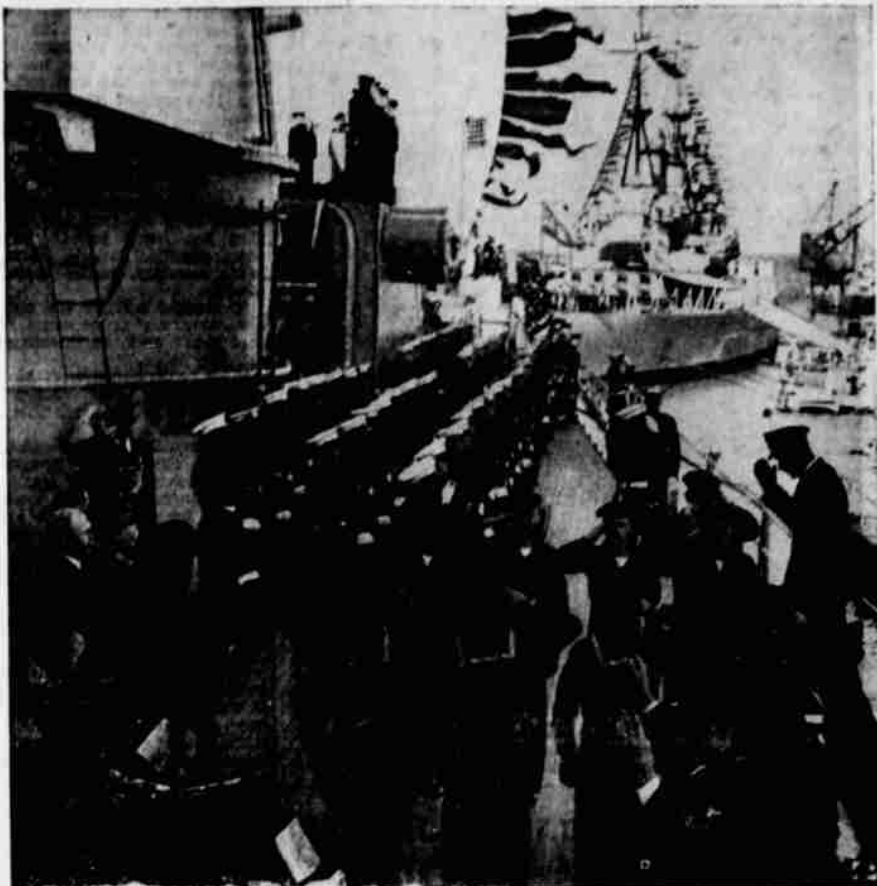
The lucky male will receive as a prize an all-expenses-paid holiday in Chicago for himself and his wife. If there is one.

Additional prizes to tickle the cookies of any man's pumper include clothing, tools, apparel accessories, and other odds and ends.

A new public service program got under way on LW at 2 p. m. today. Basin Briefs, an airy 10 minutes of what you are doing in the various basin regions, will be coming your way daily at the above time.

Listen in to see what your friends are doing and what you should be doing.

"The Croupier," which in my estimation is the best of all mystery half-hours to hit the local airwaves recently, will have its last



ROYAL SAILOR VISITS U. S. SHIP—King George (right), in naval uniform, comes aboard U. S. S. Columbus at Portsmouth, England, for luncheon with Adm. Richard L. Conolly, Eastern Atlantic Commander. At left are U. S. Ambassador Lewis Douglas and Adm. Conolly.

hearing tomorrow night at 8:30 on LW.

Listen in for a suspenseful thirty minutes of chills.

"A Strange Tale of Thanksgiving" will be told by the "Count's" faithful companion, Rene Michon, during tonight's episode of "The Count of Monte Cristo," JI, eight o'clock.

Feeling in a funny mood? Well, here's a few bone ticklers to banter around.

A television producer refused to use a set of talented twins because he knows what double features did to the movies. Ain't it the truth.

But then for the same price there are always these corny short features thrown in to replace the lowly "B" grade effort. You just can't win.

Bemoaned the de-shirted race track tout, "Every time I go to the race track I have a romantic time. The horse hugs the rail, the jockey puts his arms around the nag's neck, and I kiss my money goodbye."

Then there was the time last week in the newsroom when I took

EXTENSION UNIT NEWS

Altamont Sends Gifts Overseas

Christmas spirit was thoroughly demonstrated by members of Altamont home extension unit at the November meeting.

Six large packages of food and clothing was packed and wrapped by seven members at the home of Mrs. S. H. Dahler. One was sent to Germany, two to France, three to England.

While a group of 14 members gathered early at Joan's Kitchen in the fairgrounds building to make blouses, Miss Mary Glen demonstrated the making. Both groups of members were served luncheon by the following hostesses, Mrs. Lula Faulkner, Mrs. Viva Millard, Mrs. Joe Miller, Mrs. Ed Lee, Mrs. J. A. Overton, and Mrs. L. H. Wollenberg.

The December meeting will be held on Thursday, December 1. "Herb Cooking" will be demonstrated by Mrs. Paul Lee and Mrs. Leis Thurman.

The Fairhaven home extension unit met at the home of Mrs. Charley Ohles in Stewart-Lennox addition November 18. The lesson, "Blouse in a Day" was given by Mary Glen, home demonstration agent, with Mrs. Lee Holliday, Mrs. P. Roberts, Mrs. Karl Friedrich, Mrs. George Anderson and Mrs. James Hopkins making blouses. The remainder of the group did fancy-work.

It was decided to have a Christmas exchange at the December meeting, the gift not to exceed 50 cents.

A potluck lunch was served at noon with 24 present.

The local home extension unit met on two successive Thursdays recently, the first for the demonstration on Christmas decorations from nature and then on Thursday, November 3, Mary Glen, home demonstration agent for the county, led the "Streamlined Sewing" lesson. Five women made the "blouse in a day" and others came during the afternoon for the business sessions. A sack lunch was brought by each member.

Those attending were Mrs. Charles Hale, Mrs. Fred Markwardt, Mrs. Walter Collins, Mrs.

Redding—John F. Reginato, Shasta Cascade Wonderland association, has been appointed a member of the travel and recreation committee of the Sacramento valley council, California state chamber of commerce.

Reginato's work with the committee will be to attempt greater acceptance of Northern California as a tourist attraction and to increase recreational facilities.

Edward Proulx and the hostess, Mrs. Gerry Wolff.

The next meeting of the group will be the first Thursday in December and Mrs. Earl Hall and Mrs. Walter Zimmerman will lead the project on "Herb Cookery."

City Employees Near Chest Goal

Recreation Director Sam Smith informed city council members that city employees are only \$13.50 short of making a 100 per cent contribution to the Community Chest. Their goal is \$290.

Smith stated that collections in other government branches in the city were: county workers, 65 per cent; federal employees, 70 per cent; city public school teachers over 100 per cent.

AT THANKSGIVING POP JOLLY TIME IT NEVER FAILS ARE YOUR CHOICE BEST Home Popping

POP CORN

Cinch Cake Mix is tops for quality... I've tried them all.

SCHUSS' 117 So. 7th St. Ph. 6354 FINE WINES. Schuss' For Years Have Carried a Most Complete and Varied Stock of Fine Wines. Here are a few: CHAMPAGNE Imported Mercier (1937) 5ths \$6.75 At a new low price! 10ths \$3.95 New York - Great Western (America's Best) 5th \$5.50 FI California 5th \$3.50 ITALIAN CHIANTI—1945 Vintage - Full Quarts \$2.65 Martini and Rossi. VIRGINIA DARE 1/2 gals. and 5ths. Perducci - 1944 Vintage DINNER WINES Redwood Empire Quality IMPORTED GUINNESS STOUT AND BASS' ALE. Also Concannon, Simi, and Christian Bros. Fine Quality Dinner Wines. OPEN ALL DAY THURSDAY FOR YOUR CONVENIENCE



SEE this "NEXT LOOK" in cars! TRY this "NEXT RIDE" in cars!

Go out for a trial drive! Get the newest motoring thrill! New 1950 Studebaker's "Miracle Ride"



Smooth going in a Studebaker! The superbly balanced Studebaker design combines with a newly perfected coil spring front suspension to flatten out the roughest spots.



A dream to drive on curves! This Studebaker puts the law of gravity itself to work for you when you head around a turn. Variable ratio steering. Wide-rim wheels. Extra-low-pressure tires.

FIVE MINUTES AT THE WHEEL...AND YOU WANT THIS CAR FOR KEEPS!

"TAKE a look—take a ride—and you'll take it away!" That's what people everywhere are saying about the excitingly different 1950 Studebaker.

Come in now and see for yourself how right they are. Arrange to go out for a convincing trial drive in a low, long, alluring new Studebaker.

You relax as you drive. You enjoy to the full the deep-bedded, soft-sprung comfort of the new Studebaker "Miracle Ride."

Come in and drive this 1950 Studebaker. Take advantage of this opportunity to try out this car. See why it's being bought faster than any Studebaker in history!

McCULLOCH MOTORS Klamath and 8th Phone 4149

STUDEBAKER'S REALLY ROLLING: STUDEBAKER LEADS AGAIN WITH THE NEXT LOOK IN CARS!

Wherever smart men meet, you'll hear:

"For richer, finer taste SCHENLEY is the one I choose"



\$360 1/3 qt. \$225 Pint

ENJOY RICHER, FINER TASTE FROM SCHENLEY THE HOUSE OF AGED WHISKIES

RARE BLENDED WHISKY 86 PROOF. THE STRAIGHT WHISKIES IN THIS PRODUCT ARE 5 YEARS OR MORE OLD. 35% STRAIGHT WHISKY, 65% GRAIN NEUTRAL SPIRITS. COPYRIGHT 1949. SCHENLEY DISTRIBUTORS, INC., NEW YORK CITY

HOSIERY DEPT. - STREET FLOOR

Sophisticated fashion superbly fitted City colors in Belle-Sharmeer leg-size stockings. Here's the final touch of perfection to your Fall wardrobe - Belle-Sharmeer's exquisitely-subtle new shades, fitted flawlessly in personal leg-lines. Do see them soon. 45-gauge, 30-denier 1.50 51-gauge, 30-denier 1.75 51-gauge, 20-denier 1.85 51-gauge, 15-denier 1.95 Shades of FAN FAIR, ASHLIGHT, SKY LINE, NEUTRONE. Hosiery Department 512 MAIN ST. Street Floor