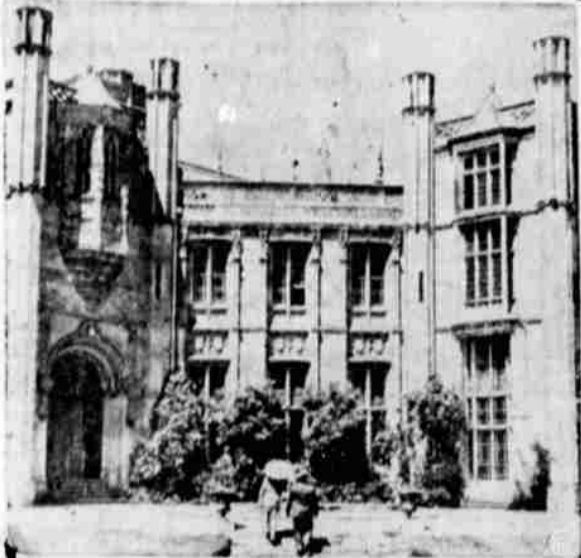


Englishman's Castle Isn't Home Anymore.



HIGHCLIFFE CASTLE: Twenty-nine bedrooms and \$98,000.

LONDON (NEA) — If you happen to be dreaming about castles, there are plenty of English squires who would be glad to help you make your dreams come true.

For a price, that is.

The castles of a lot of landed British gentry are getting to be nothing but nightmares to them. What with death duties, high taxation, austerity and devaluation, it seems a man can't call his castle a home anymore. They're selling out.

Selling History

And when they sell, they're selling British history.

Take Geoffrey Fownes Luttrell, for example. Until recently he was squire of an estate in Somerset

which included four villages with 1500 inhabitants, plus Dunster Castle in which his family had lived for 600 years.

Squire Luttrell has tried to keep things together for a long time. He even sold ice cream to holiday-makers who came to the Somerset seashore.

Sold Out

Finally he had to sell out. A land development company picked up the 8000 acres of farms, shops and cottages for about \$112,000.

For a little less (about \$98,000) somebody can snip up the Earl of Abington's Highcliffe castle, near Christchurch, Hanits. It doesn't have quite the history — the structure was imported from France in 1825 — but it has 29 bedrooms and 1825 baths. It was originally built in Normandy in the 16th century.

There are others on the market, too, of your dreams of a castle include the money to bail out the squires.

Wait Few Years

Otherwise, you could wait a few years. Squire Luttrell has taken a five year lease on the castle he just sold. Then the land company will rent it again.

They'd like to let it to "a wealthy American who can see for himself how lovely England is." And Dunster Castle is big enough for the wealthy American to take in a lot of dreamers as paying guests.

'Gus' Pig At Home In Iowa

ARLINGTON, Ia., Oct. 31 (AP)—A 275-pound pig, name of Gus, is a frequent and welcome guest in the parlor of the Pete Bachtell farm home near here.

Gus developed a penchant for life indoors when the Bachtell family reared him behind the kitchen range.

Babied

Gus was abandoned at birth by his mother. The Bachtells gave him his start with warm milk fed from a baby bottle.

Although Gus now has permanent quarters in the barnyard, he frequently follows the Bachtells indoors.

On these occasions Gus immediately heads for the scatter rug in front of the radio and reclines contentedly.

Mrs. Bachtell says she doesn't protest too much. Gus is housebroken and his manners are above reproach.

Handsome

As pigs go, Gus is a handsome spotted Poland China. Puppy-like, he will nuzzle the Bachtells in friendly fashion. He grows jealous when attention is paid to Tony, the family dog.

The Bachtells say Gus has several accomplishments:

He knows his own name and will respond when called.

He knows the sound of the Bachtell jeep. When he hears it coming he romps happily to the spot where it customarily is parked and awaits its arrival.

Affinity

He likes human companionship and recently trudged a mile through field and wood to keep Bachtell company while he sawed wood.

There's a big question mark about Gus' future. He is now at a weight when most pigs are lively candidates for conversion into bacon and pork roast.

The Bachtells dislike to think about such a possibility. They say Gus ought to be in a circus.

FOOD CHEAPER

PORTLAND, Oct. 31 (AP) — Despite the nation-wide rise in living costs, Portland food prices dropped a trifle last month.

Winter weather is dangerous weather. Phone Hans Norland for immediate coverage on your car—8666.

Two Infants Die in Fire At Centralia

CENTRALIA, Oct. 31 (AP)—Two infant boys burned to death in their beds early yesterday despite the heroic efforts of their mother and a baby sitter to rescue them.

The victims were John Dickey, 2, and his brother, Billie, 2, sons of Mrs. Jean Dickey, daughter of the Centralia postmaster.

Burned

Mrs. Dickey and the young baby sitter, Dessie Tunell, 16, were forced by the flames to jump 14 feet to the ground from the boys' bedroom window. Both suffered first degree burns when their nightclothing caught fire.

The girl's condition was reported critical, the mother's serious. Neither could be questioned because of their burns.

Fire Chief Walter Ryckman said an overheated wood stove in the living room probably caused the blaze which broke out about 8:40 a. m.

Costume Gets Him Swift Ride Home

SOUTH PORTLAND, Me., Oct. 31 (AP)—A grown man in diapers—and nothing else—walked calmly along Main street early today.

It was just a gag, he told police. The towel, neatly pinned where his pants should have been, was a Halloween costume and he was wearing it home from a party.

Police speeded him home by patrol car.

Now you Know!

The answers to every day insurance problems *
By Jerry Thomas
Insurance Counselor



QUESTION:

I am a very careful person and it seems to me that if I am watchful of the upkeep and repair of my property, it is very unlikely that an accident could occur which could be charged to my negligence. Why should I take on the needless expense of carrying a Home Owner's Liability insurance policy?

ANSWER:

Certainly a person who is careful about the upkeep and repair of his property is much less likely to become liable for damage from an accident on that property. However, all your care may not keep someone from suing you for damages, and even though you won the case, you might be forced to pay a great expense in just defending the suit. The proper insurance will not only handle your loss if the case goes against you but the insurance company will defend you in the suit itself.

Jerry Thomas
INSURANCE
119 N. 6th Phone 6465

ELECTROLUX VACUUM CLEANER
SALES • SERVICE SUPPLIES
1334 Sargent Phone 6905
ELMER FLEMING, Agt.

ASPHALT TILE FLOORS
Here's one important ingredient in this restaurant's success recipe!
Besides being smart, colorful and eye-appealing—floors of Tile-Text Asphalt offer these worthwhile advantages for restaurants. They're easy to keep clean. Spilled foods or stains wipe off with no effort. Tile-Text is comfortable underfoot. Doesn't begin to show wear even when trampled on by whole armies of patrons. Many colors, patterns and accessories available to keep pace with your decorative tastes. Tile-Text is laid tile by tile for easy alterations at low cost. Call today for more information.

Calhoun's FLOOR COVERINGS
The Largest Stock of Quality Floor Coverings in the Klamath Basin
357 E. Main Phone 8495

Noted Throat Specialists report on 30-Day Test of Camel Smokers...

NOT ONE SINGLE CASE OF THROAT IRRITATION due to Smoking CAMELS!

Yes, these were the findings of noted throat specialists after a total of 2,470 weekly examinations of the throats of hundreds of men and women who smoked Camels, and only Camels, for 30 consecutive days.

I MADE THE 30-DAY TEST AND MY DOCTOR'S REPORT WAS NO SURPRISE TO ME! CAMELS ARE A GREAT SMOKE—AND I KNOW THEY'RE MILD! MY THROAT TOLD ME SO!

Joe Bayard
SALES REPRESENTATIVE

SEARS ROEBUCK AND CO.

THIS WINTER, ENJOY LOW COST HEAT!

HOMART
THE RIGHT WAY TO SAY HEATING EQUIPMENT

Dependable Homart Gas FLOOR FURNACE 97⁹⁵

10.00 down, 2.00 per month (Usual carrying charge)

- No basement needed • 45,000 B.T.U. size • Completely automatic

Enjoy cozy, healthful warmth this winter with an economical Homart gas heating unit! There's no elaborate system to install. It fits right into floor of your home... and you can regulate it from your easy chair. Adjustable thermostat holds any room temperature between 50 and 90 degrees F. Safety pilot shuts off gas if pilot light goes out. See this low-priced floor furnace at Sears!

STEEL FLOOR GRILLE

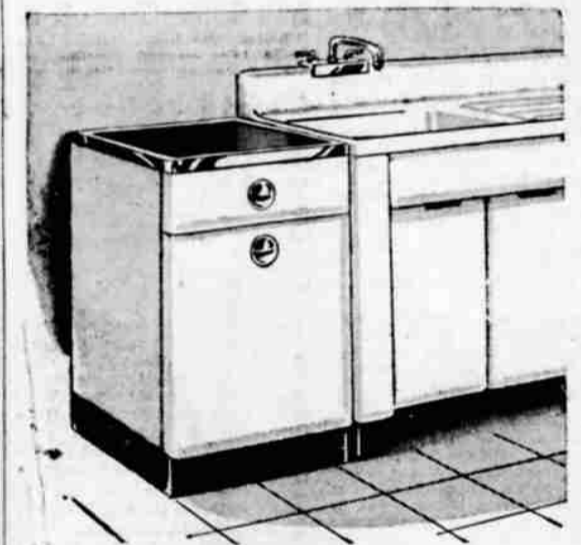
CORRUGATED HEATING CHAMBER

NEW DESIGN DRAFT CONTROL

PORCELAIN ENAMELED CHAMBER

STREAMLINED CURVED BOTTOM

PORCELAIN ENAMELED BURNER



21-Inch Enameled Steel Kitchen Base Cabinet

Regularly 41.50 **38⁸⁸**
4.00 down, 5.00 per month (Usual carrying charge)

Gleaming white baked-on enameled steel cabinet with smooth-sliding drawer, silent door catch for easy opening. Adjustable shelf in storage compartment. Black linoleum top. 21 inches wide, 35 3/4 inches high, 24 inches deep. Left or right-hand door.

Closed Front Seat
Hardwood Seat and Cover
Homart Brand... 4.19
White enameled metal seat, made of 1 1/2-in. hardwood. Chrome-plated brass hinges. Fits all standard type bowls.

Fan-Driven Heater
9.25
In warm weather a powerful fan. On chilly days a comfortable heater. Quiet fan moves 45 cubic feet of air per minute. Long-life coils.

controlled heat in every room!

Deluxe Kenmore Vented Gas Heater
A.G.A. Approved **44⁹⁵**
5.00 down, 5.00 per month

Handsome Heater
Safe, Portable Gas Heater
A.G.A. Approved **15.95**
Clean, safe, economical operation at Sears' low price! Neutral brown enamel finish. Uses natural or bottled gas.

Sturdy Gas Heater
Warm Dependable Kenmore Model
Chrome Guards... **10.95**
Gives 17,000 BTU's per hour of cheery radiant, circulating heat! For bottled or regular gas. Brown porcelain enamel.

Enjoy even heat with this gas heater. Has 5 large chrome plated venting radiant doors to give you more heat for every fuel dollar. Burner is of porcelain enamel finished steel. 35,000 BTU per hour. Visit Sears.

EFFICIENT GAS HEATER

26⁹⁵

5.00 down, 5.00 Month on Sears Easy Terms (Usual carrying charge)

- Regular or bottled gas models
- 20,000 B.T.U. output per hour
- A.G.A. Approved

Even heat in every room with all steel bolted construction heater. Has cast iron burner. Burns all types of liquid petroleum gases. 19x19x9-in. size.