



FRESHMEN TOGETHER—Mrs. Sally Schweinler's freshman "beanie" is fitted by her son, David, after they registered as first year students at College of Puget Sound, Tacoma, Wash.

Spotty Yield Makes Potato Harvest Hard To Figure, this Year

By C. A. HENDERSON
Klamath County Agent

The 1949 potato harvest is well past the half-way mark, perhaps it is two-thirds completed as of October 13, some growers believe it to be nearly 75 per cent done.

It is now a little easier to see what the yield and quality will be although the range of yield is so large that any estimate as yet will not be too accurate. Some fields have yielded much lower than usual being as low as 100 sacks or even less per acre. On the other hand some extremely good fields that were frozen little if any, have reported yields ranging as high as 400 to 450 sacks per acre.

Quality
The quality too is a little more favorable, and in some fields the quality is up to normal. The percentage of No. 2's and culls is considerably above average. On the whole the percentage of No. 1's will perhaps take a drop of from 12 to 15 per cent in the over all picture.

No Support
In the southern part of the Klamath basin, particularly in some of the newer lands, a considerable acreage of potatoes was planted in excess of goals allotted and therefore is outside of the government program of potato support. This will increase the acreage originally estimated for the basin an additional 2000 acres and of course will increase the total shipments.

Popular Opinion
It is the general feeling that the market for most potato grades will stay above support except for U. S. No. 1B's, and therefore potatoes outside the program will not be seriously affected.

Potato shipments to the end of September as compiled by Ross Aubrey, in charge of the local state-federal shipping point inspection service shows a total of 278 cars shipped in September with no shipments in August. This compares with 414 cars shipped in September of 1948 and two cars

in August of that year. October shipments to date also have been rather slow.

Modest Fisherman Saves His Boat

WILMINGTON, Calif., Oct. 17 (AP)—James Hardin, lobster boat fisherman, is particular about getting his clothes wet. But withal he is a modest man.

So when the engine of his lobster boat broke down and the anchor dragged toward the rocky shore, "Hardin swam for help.

He disrobed and towed his clothes behind him. Then he put them back on before he called the coast guard.

'Mentally Retarded' Teachers Approved

LOS ANGELES, Oct. 17 (AP)—Members of the board of education did a double take when they read a report listing teachers who had passed an exam to teach in schools for children with mental afflictions.

The introduction to the list read this way:
"The approved mentally retarded elementary teachers are:"
Just a little error in syntax, no doubt.

Some types of radio transmitting tubes are gold-plated to increase their efficiency at high frequency operation.

PIN-WORMS CAN CAUSE SERIOUS TROUBLE

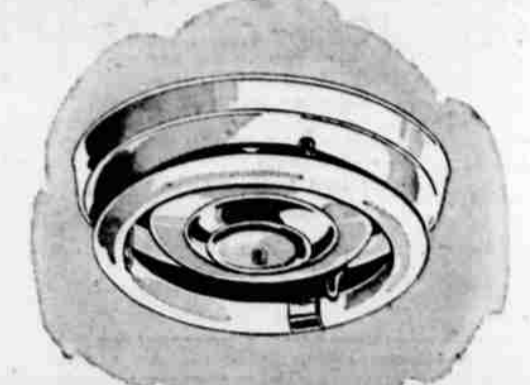
Beware of Pin-Worms, ugly pests that live and grow inside the human body... and can cause serious trouble... even internal inflammation and bleeding. Out of the danger signs is the tormenting rectal itch.

Don't take chances. Get Jayco's P-W Vermifuge. P-W's vital ingredient is a medically-approved drug that scientifically and easily destroys Pin-Worms and removes them from the body.

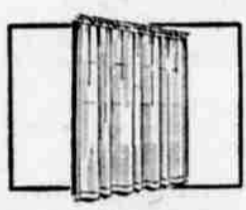
So if you suspect Pin-Worms, ask your druggist for P-W, the small, easy-to-take tablets perfected by the famous Jayco Co. specialists in worm remedies for over 100 years. Get real relief: P-W for Pin Worms!

Montgomery Ward

9th and Pine Phone 3188



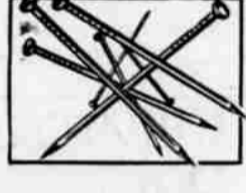
CIRCLINE FLUORESCENT REDUCED!
Reg. 7.98. Ward Week only! Add bright, cheerful light to your kitchen or bath with this smart looking, ultra-modern fluorescent, baked white enamel finish. With 32-W bulb. **6⁸⁸**



SHEER RAYON PANELS
REG. 1.19
Ward Week Only **84^c** ea.
Save! Celanese rayon marquisette wears well. Neatly hemmed, headed. 41"x81". Eggshell.

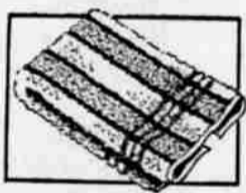


7.69 RANGE-SERVICE COMBINATION
115-230-V **6⁴⁸**
Cut-priced! 2 Main, 2 range and 4-plug fuses in one cabinet. 2-35, 2-60 amp. cartridges.



NAILS REDUCED OVER 30%!
Tough Steel **9^c** lb.
Stock up on nails at this low, sale price! Your choice at 8, 16, 16 and 30 penny sizes!

Packing 'em In!



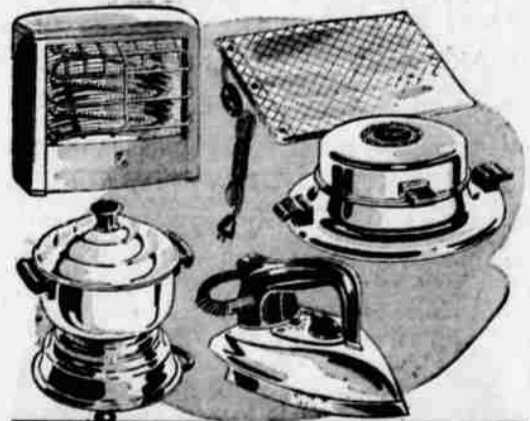
NEW CANNON TOWELS MULTI-STRIPED
Sturdy, Absorbent! **39^c**
20x40" bath towels of thick terry cloth, that soak up water like a sponge. Colorful stripes!



1.19 MEN'S SHIRTS AND DRAWERS **94^c** ea.
Heavyweight Healthguards!
T-style shirt—long body. Ankle Stock up! Spring knit cotton. length drawers—elastic waist.

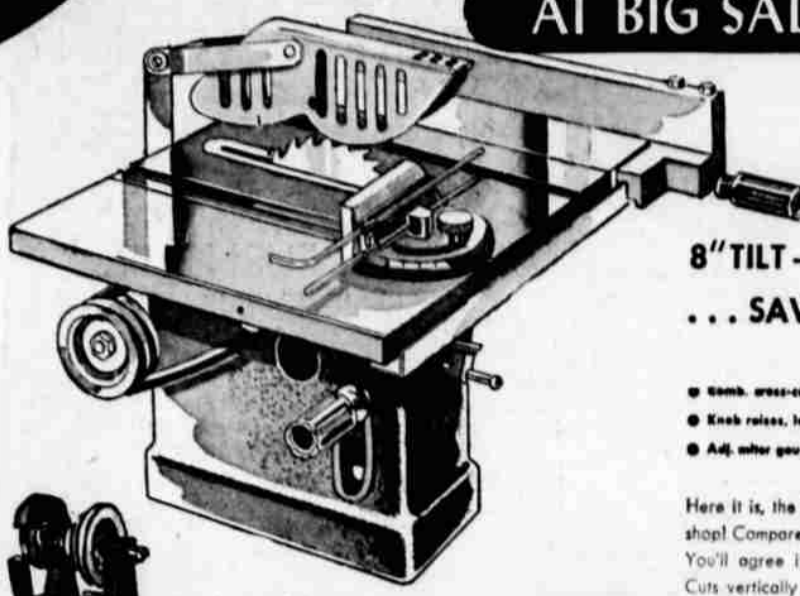


45c LINEN TOWELING "P" QUALITY **35^c** yd.
18 Inches Wide!
Bleached pure linen—washfast Stevens' famous "P" quality! woven borders. Quick-drying!



REG. 5.95-6.95... YOUR CHOICE
SAVE \$1 TO \$2. Quality-built electricals for yourself or gift-giving! Cords included.
● Autom'ic Iron, Corn-Popper, Heating Pad
● Radiant Heater, ● Jumbo Single Waffle Baker **4⁹⁹** each

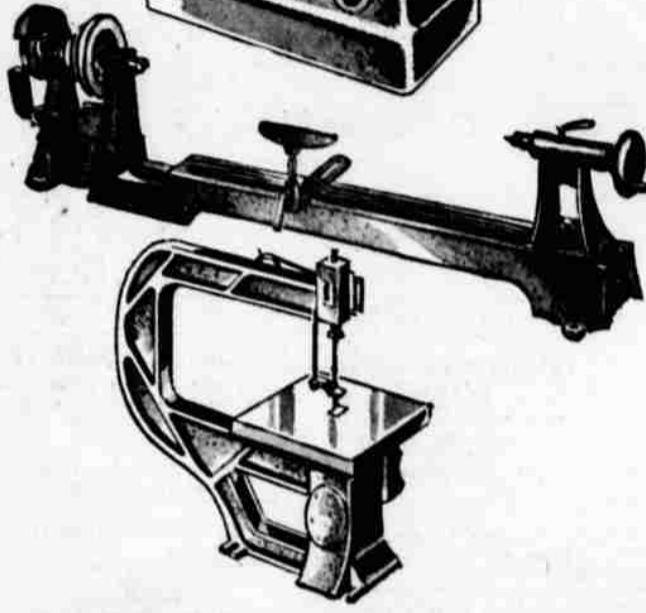
TOP QUALITY POWER TOOLS AT BIG SALE SAVINGS



8" TILT-TABLE BENCH SAW
... SAVE \$8 TO \$10 NOW!

● Comb. cross-cut, rip blade
● Knob raises, lowers blade
● Adj. alter gauge and fence **32⁸⁸**

Here it is, the basic power tool for every home workshop! Compare quality features... then compare price! You'll agree it's priced for below the usual 8" saw. Cuts vertically up to 2 3/8"... cast-iron table extends to 20x14"... tilts to 45"... heavy cast-iron base! limited quantity... so come in for yours today!



REG. 16.98 GAP BED LATHE
Ward Week cut price! Light-duty model... 10" swing over cast-iron bed... 27" between centers. 4 step drive pulleys! 4x1/2" grinding wheel. **14⁸⁸**



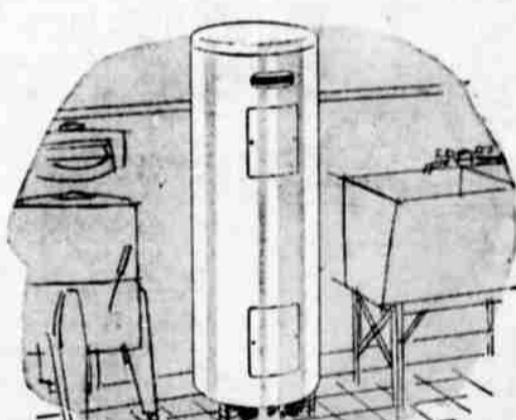
REG. 16.98 JIG SAW
Specially reduced for Ward Week only! Rugged, 12-in. light-duty model... cuts to center of 24" circle. 8x8" table tilts to 45". **13⁸⁸**

WARD WEEK

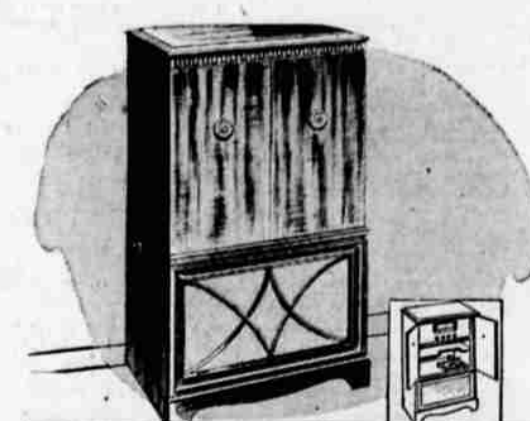
WHEN ALL AMERICA SHOPS AND SAVES



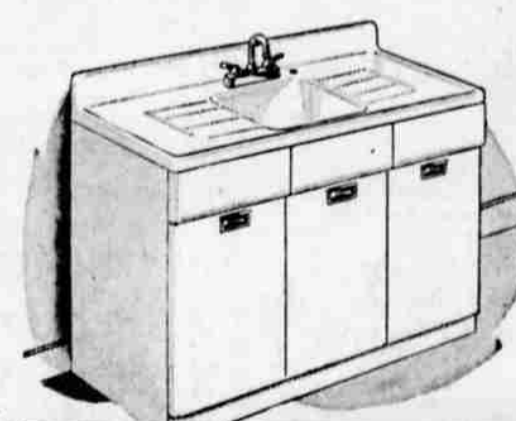
4.50 CHILDREN'S MOC OXFORDS
ON SALE! Outstanding values even at regular price! Now, Ward Week brings sturdy Red Bonds to you at this slashed price! In brown, with long-wearing leather soles. 8 1/2 to 3. **3⁸⁸**



SALE! ELECTRIC WATER HEATER!
REG. \$4.50. Ward Week special. Automatic! furnishes ample hot water. Clean, quiet. Double-element. Galvanized steel tank. U.I. approved. **74⁸⁸** 42-gal.
On Terms: 10% Down, Balance Monthly



SALE! 1950 FM-AM RADIO PHONO!
NEW. Terrific buy! This price for Ward Week only! FM-AM radio plus new 45 rpm phono in mahogany veneer console cabinet! **119⁸⁸**
\$5 Down Bal. Mon.



SPECIAL PURCHASE! STEEL SINK!
SAVE DOLLARS! 56" size. Big storage space. Toe, knee space. Rounded corners... self-cleaning wire shelves. Chrome-plated fittings included. **91⁸⁸**
Reg. 116.98
On Terms: 10% Down, Balance Monthly

TO ENCOURAGE EARLY CHRISTMAS ORDERING



REDUCED!
OCT. 15 TO 25 ONLY
Baby's first Shoes in Bronze
This Beautiful Ashtray **\$6⁹⁵**
REG. \$8.95



SMART BOOKENDS **\$10⁹⁵** PAIR
REG. \$12.95
BRING YOURS IN TODAY!
TEPPER Jewelry
Phone 2153 Tulelake, Calif.
EXQUISITE PORTRAIT STAND **\$16⁵⁰**
REG. \$18.75

WARD WEEK! LOWEST PRICES OF THE YEAR!