

Cattle Market Unsettled; Portland Good

Livestock markets were unsettled during the last week of September, according to the weekly cattle and hog review prepared by the OSC extension service from USDA reports and other data.

Cattle receipts at Portland the first of this week were larger than any other Monday in more than three years. Over 3200 head arrived for the first day's trade. Prices held fairly well on Monday although it was definitely a buyer's market and some animals were unsold. Arrivals later in the week were light but the yards had not completely cleared for Thursday's trading, even though quotations declined 50 cents on most classes and were a dollar or more below Monday on some cows.

Differences
The cattle situation at Chicago and most other markets was quite different from Portland this week. Receipts in the Midwest were sharply curtailed and live prices worked higher despite a dull and weak to lower dressed beef trade. At Chicago slaughter steers were 25 cents to a dollar higher compared to last week's close. Most advance was on common and medium kinds with extremes up a dollar fifty. Heifers and cows were fully 25 to 50 cents higher.

Cattle slaughter for the country as a whole dropped 8 per cent last week and was 6 per cent below the same week of 1948. But the cattle were heavier than a year ago and carcass weights totaled a little more. Calf slaughter and veal production were up for the week but below a year earlier.

Beef and veal wholesales steady to two cents a pound lower at Pacific coast markets this week. Most of the decline was in cow and bull beef. Trends were similar at Chicago and New York where most grades of steer and heifer were off a cent and cow was off three to five cents a pound.

Lice Control Insecticides Recommended

FARM—Lice control—39

DDT and rotenone are the two insecticides being recommended for cattle lice control. They may be applied as spray, dust or through dipping. With rotenone, however, two treatments 17 to 21 days apart are recommended. One DDT treatment will usually give practical control. Neither treatment kills eggs, however, every residual action of DDT usually serves as a follow-up as the eggs hatch. When spraying, it will require about one and one-half to two gallons of spray per animal. Thorough wetting is necessary.

Instructions

Formulas: DDT dip or spray—8 to 12 pounds of 50 per cent wettable DDT powder in 100 gallons of water.

Rotenone—wetable sulphur dip or spray: 1 pound of dust or powder containing 5 per cent rotenone; 10 pounds of wettable sulphur finely ground in 100 gallons of water.

DDT dust: A 10 per cent DDT dust rubbed thoroughly into the hair over all infested parts of the body.

Rotenone dust: 5 per cent rotenone dust or powder mixed at the ratio of 1 to 9 with finely ground wettable sulphur. This mixture thoroughly mixed is rubbed into the hair over all infested parts of the body.

In treating dairy animals for lice the material methoxychlor is recommended.

Rotenone may also be used on dairy cattle.

Treat early in the fall before the lice populations have a chance to build up and the animals have not grown their winter coats.

CARNIVAL

By Dick Turner



"Have you thought of the army as a career—or haven't they asked you yet?"

Spud Workers Loading Dock At 3rd, Main

As the potato harvest starts in full swing Monday, here's news of interest to farmers.

The Oregon state employment service will provide parking and loading space on the 3rd street side of the employment service, 3rd and Main, for farmers to load their potato pickers.

And starting Monday, they will open at 7 a. m. and earlier thereafter, if the need exists.

Pickpockets Try New Technique

CAIRO. (AP)—Two men stopped pedestrians on the street, explained they were political police, and searched them. A detective passed by, took one startled look and arrested both men.

They were two of Egypt's best-known pickpockets trying out a new technique.

No Matter Where You Live . . .

You Can Enjoy Tank Gas Service



Propane Tanks for Rent NO NEED TO BUY UTILITY SERVICE California Pacific Utilities Company

1011 Main Phone 7415

Farm Prices Show Gains In September

For the first time in half a year, average prices received by United States farmers showed an advance, according to the weekly farm price, crop and weather review prepared by the OSC extension service from USDA reports and other data. The government index on September 15 stood at 248 per cent of 1910-1914. That was a 1.6 per cent increase from mid-August, but was 14 per cent below a year earlier.

Higher average prices for beef cattle and hogs contributed most to the upturn, although dairy products and poultry and eggs also increased. The index of livestock and products increased nearly 3 per cent for the month. Crops as a whole showed a decline of about one-half of one per cent. Soybeans, potatoes, rice and dry beans showed the sharpest decreases this month.

Parity Index Down
The parity index continued to decline. As of mid-September, this index stood at 242 per cent of the 1910-1914 level. That was a decrease of about one-half of one per cent for the month, and was 3 per cent below mid-September 1948.

As a result of the higher price index and lower parity index, the purchasing power of farm products rose slightly during the month. The ratio of prices received to prices paid, interest and taxes, but not including farm wages, stood at 103. That represents a rise of 2 points for the month, but is still 13 points below a year ago.

The liquid left from cooking vegetables may be used to dilute evaporated milk for a cream sauce.

TIN COATS—TIN PANTS
Black Bear — Hirsch Weiss + Single or Double Weight
OREGON WOOLEN STORE
8th & Main Phone 6873



JIM ELINGS

Agent Elings Now Located In Deschutes

Jim Elings left his post as assistant county agent for Klamath county on October 1 to accept a position as county agent for Deschutes county. County Agent Charles Henderson reported recently.

J. D. Vertrees, an OSC graduate and recently employed at J. W. Kerns company has taken over Elings' position here.

Elings came to Klamath Falls from OSC in July, 1947, and had taken a very active part in agricultural matters during his stay. A livestock specialist, Elings started

Preventatives Will Lower Rabbit Losses

While disease losses in domestic rabbits probably can never be completely eliminated, preventive measures and good production practices generally can keep losses to a low level, according to the author of a new OSC extension circular 534, "Common Diseases of Domestic Rabbits."

The circular is a reprint of an article and chart on this subject prepared by Evert E. Lund, parasitologist of the U. S. rabbit experiment station in California. It lists 14 points in good disease control practice and then lists all common diseases in chart form, giving part of body affected, name of the dis-

ease, general symptoms, treatment, prevention and remarks about it. High natural resistance to disease is inheritable, hence persistent selection of good breeding stock will pay well, the author states. Copies of the bulletin may be obtained free from country extension offices or direct from the college.

IT'S LIGHT! IT'S PALE! UNUSUAL ALE
Columbia Ale
IN THE DISTINCTIVE GREEN BOTTLE
TOP O' THE TANK
COLUMBIA BREWERIES, INC. © TACOMA, WASHINGTON
J. Marvin Hilton Dist. Co.

POULTRY
It is a mistake to market turkeys before they are in prime condition. It is also poor economy for the producers to hold them after they are ready for market. The experienced turkey buyer or grower can readily identify which ones are ready for market by handling the birds. The amount of flesh on the breast, over the back, around the tail head, on top of the neck, under the feather tracks, and the color of the skin are all indications of condition. Birds ready for market are free from pinfeathers, especially on the breast.

OFFICE SPACE FOR RENT
City center . . . Main street frontage. Inquire **Drew's Manstore**

SLEEPY TIME
CADILLAC, Mich., Oct. 6 (AP)—The Parent-Teacher association has asked city officials to enforce a 9:15 p.m. curfew for children under 17. The reason: school teachers complain their pupils are falling asleep in the classrooms.

IN PERSON

Gale Page
"Star of Screen Radio and SHOWBOAT."

and **Solito de Solis**
"Europe's most sensational Pianist and Composer."

IN POPULAR CONCERT featuring

GERSHWIN • CHOPIN
PORTER • DEBUSSY
KERN • BERLIN • SOLIS

Mon., Oct. 10 - 8 p. m.
MILLS SCHOOL AUDITORIUM
Tickets \$1.00 (Tax Inc.)
On Sale at
WAGGONER DRUG
9th and Main
GOODYEAR SERVICE
8th and Klamath
AULD APPLIANCE
127 So. 6th
Sponsored by the
39-39 Club

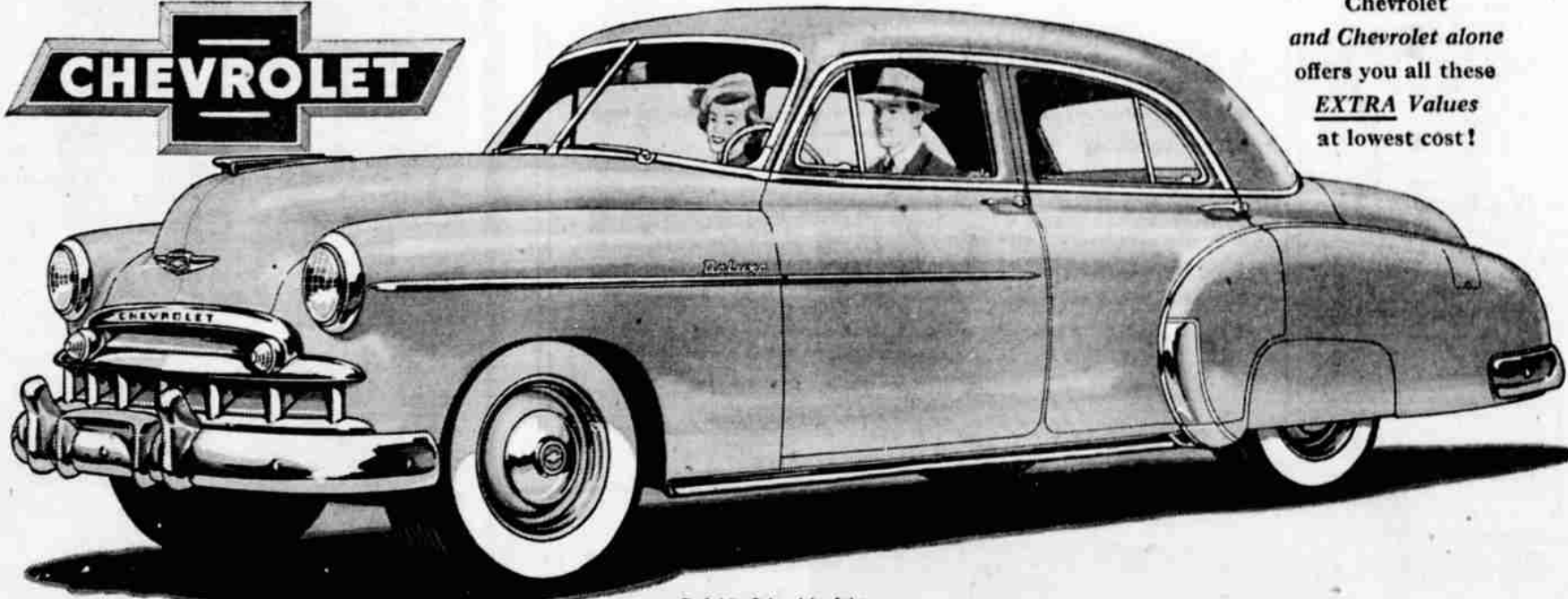
No other low-priced car offers you all these EXTRA VALUES

Certi-Safe Hydraulic Brakes
more outstanding than ever before with new *Dubl-Life* Rivetless brake linings that last up to twice as long.

World's Champion Valve-in-Head Engine
the extra efficient power plant with the valve-in-head design that's setting the trend for the automotive industry.

Center-Point Steering
with control centered between the front wheels for maximum driving-ease with minimum driver fatigue.

Fisher Body Styling and Luxury
with smooth, graceful curves, new interior richness and such extra luxuries as Push-Button Door Handles.



Chevrolet and Chevrolet alone offers you all these EXTRA Values at lowest cost!

Extra Economical to Own and Operate
and traditionally worth more when you trade; for Chevrolet is America's most wanted motor car—new or used!

Curved Windshield with Panoramic Visibility
supplying all that extra vision which means extra safety in driving with a fuller, freer view all about you.

Fisher Unisteel Body Construction
with steel welded to steel above, below and all around you for the highest degree of solidity, quietness and safety.

5-Inch Wide-Base Rims, plus Low-Pressure Tires
the widest rims in the low-price field—plus extra low-pressure tires—for greater stability and riding-comfort.

Longer, Heavier, with Wider Tread
the big car in the low-price field, with all the advantages of more riding-comfort, roadsteadiness and safety.

ASHLEY CHEVROLET

410 So. 6th Phone 4113

We're featuring Chevrolet Super-Service Specials all this month—so "ALL ABOARD FOR VALUES UNLIMITED!"

Extra flavor Extra rich Extra special

Van Camp's IMPROVED PORK AND BEANS

More people go for Van Camp's than any other beans. rich, delicious sauce—

flavor THROUGH and THROUGH