

# State Fair Crowd Sets New Record

SALEM, Sept. 7 (AP)—Salem closed up shop this afternoon to go to the state fair. And another record crowd was in prospect.

Attendance yesterday, second day of the fair, was 25,544, about 1000 more than the previous Tuesday mark set in 1948.

And there wasn't any sign of a recession around here. The crowd was spending money as never before, and it bet \$48,462 on the horse races to set a new Tuesday high figure. That was double the betting total of the same day last year.

An unusual feature yesterday was a two-way tie in the 4-H club cake baking contest between Shirley Page, 14, Salem, and Diane Loening, 16, Baker. First prize is a \$100 college scholarship given by the Oregon wheat commission.

But the commission voted yesterday to give each girl a scholarship. Both girls said they practiced on their parents before the contest. Shirley baked 20 sponge cakes and Diane 12.

Diane is the younger sister of Elaine Loening, who won the contest a year ago.

Both said their families are sick of eating sponge cake.

More than 2000 youths have entries in the 4-H club contests, which make up a big part of the fair.

Kiddieland, the new system of rides for the children, is getting a big play. Another popular feature are the exhibits by the armed forces.

## Free Plane Rides, Air Show Feature

Approximately 500 free airplane rides of from 15 to 30 minutes duration will be given to spectators at the chamber of commerce-state board of aeronautics sponsored airshow to be held at the municipal airport Sunday, September 11. That was the information emanating from a meeting of the two sponsoring groups, who laid final plans for the aerial extravaganza, at a joint session yesterday at the chamber of commerce offices.

Committee members have devised a unique plan this year for the awarding of the free rides. Visitors to the show will be handed a ticket as they enter the field. They will write their names on the tickets and then place them in a raffle barrel. Then at frequent intervals, whenever aircraft is available, a number of names will be drawn from the barrel and the fortunate winners will be taken for an aerial view of the countryside.

Fourteen private plane owners, three flying services, and West Coast Airlines will cooperate with the committee in providing planes for the rides. Farmers Air Service will donate two aircraft; Oregon Aircraft, five; Stinson Flying Service, two; and the West Coast outfit will furnish a 24-passenger DC-3 for the occasion.

Charles Stark, manager of the Klamath chamber of commerce, stated today that there will be no admission charge to the annual show.

He anticipates that a number of visiting pilots will bolster the number of airmen participating in the show. Stark added further, that to accommodate those pilots, a free breakfast will be served in the airport cafeteria from 8:30 till 10:30 that morning.



**CANDIDATE**—Mrs. Patricia Marx, a honey-blond native of Sydney, Australia, will represent San Francisco in the Mrs. America contest at the Palisades amusement park, N. J. All she has to do is pay her own way. She hopes to raise the money in time to make the trip. Mrs. Marx, whose husband is partner in an electrical firm in San Francisco, says she won a "personality girl" and "pretty legs" contest in Australia.



## KF Community College Has Competent Faculty

Professional training and experience highlight the qualifications of the instructional staff of the Klamath Falls community college program which begins the week of September 19 at Klamath Union high school. The program is sponsored jointly by the local school district and the general extension division of the Oregon state system of higher education.

Dr. Caroline Brady, who will teach English, received her Ph. D. from the University of California where she taught from 1925 to 1946. For the last three years she has been teaching at the University of

## Orcutt Rites, Idaho, Monday

YREKA, Sept. 7—The body of Kenneth C. Orcutt, 36-year-old Southern Pacific brakeman cut in two by a train early Saturday, was shipped to Caldwell, Ida., Monday for funeral services and interment.

When the crew of a southbound freight train got off at Hornbrook, near here, to eat breakfast, Orcutt was missing. The engine was sent back up the tracks, his severed torso being found a mile and a quarter away.

No one could explain how Orcutt had come to fall. When last seen, about 10 cars back of the locomotive, he was on his way forward.

Orcutt, a resident of Dumasair who had been employed by the SP since 1946, leaves his parents, Mr. and Mrs. Ben Orcutt of Caldwell, and three children.

## Henley

Other bus drivers are Mrs. Dorothy Holtzouer and Albert Wilkinson for the Poe valley route, Fred Sillwell on the Midland route, Charles Spear, the Keno route, and Gordon Reed, the Shasta route.

The Lewis National Entertainers will appear at the school assembly at 2:30 p. m., September 12.

Use the Want Ads for Quick Results!

## How To Play Canasta: 5

### Improper Play Brings Penalties

By WILLIAM E. MCKENNEY  
Certain irregularities in canasta call for point penalties.

These penalties, which are given below, are deducted from your score towards game at the end of the hand. For example, if your score is 1850 points, and you commit an irregularity that calls for a 100-point penalty, it does not mean that your score is immediately re-

duced to 1450 points for the purpose of determining your initial minimum meld requirement.

**POINT PENALTIES:**  
Irregular draw 50 points  
Drawing out of turn 100 points  
Adding an irregular draw to your hand. An additional 100 points  
Failure to go out after receiving permission from partner 100 points  
Melding out of turn 100 points  
Attempting to take discard pile out of turn 100 points

**IRREGULARITIES:** The generally accepted rules of bridge and other card games regulate the irregularities in deals.

When a player draws too many cards, this error is rectified by discarding without drawing at each turn until his hand is correct.

If a player discards without drawing, he cannot pick up his discard, but he can be required to take the top card of the stock pile.

When a player exposes one or more cards from his hand, except to make a legal meld, all of the exposed cards must be left face up on the table and discarded one at a time in successive turns.

However, the player may use any of these exposed cards to form melds or to take the pack.

If, for the initial meld for his side, a player shows less than the required count, he must validate his meld if possible with additional cards. If he cannot do so or does not do so before discarding, all the cards he has exposed from his hand are treated as exposed cards.

If he has incorrectly taken the discard, he must restore it to the pile before making his own discard from his exposed cards.

If a player makes a meld including more than three wild cards, or attempts to add a wild card to a meld already containing three wild cards (other than a completed canasta), he must, if possible, rectify the error. He does this by putting the exposed wild card with another meld. If he is unable to rectify the error, the surplus wild card (or cards) improperly played is treated as an exposed card.

If a player is dealt or draws a red tray and fails to declare it before the play of the deal ends (provided he has had at least one turn to play), his side is penalized 500 points. If he has not had at least one turn to play and the other side goes out, the red trays in his hand are scored as a minus value of 100 points. The 500-point penalty does not apply.

**TOMBROW:** Four-handed canasta.

## State Asks Bids On 5 Road Projects

SALEM, Sept. 7 (AP)—The state highway commission asked for bids today on five projects.

Bids will be opened in Portland, September 20.

Projects are:  
Baker county—Grading, surfacing and oiling 1.54 miles of Table Rock creek section of Baker-Homestead highway.

Douglas county—Grading and paving 5.32 miles of Marks Ranch-Lone Rock bridge section of north Umpqua county road.

Jackson county—Excavate 20,000 cubic yards of rock on Hiskiyou slide correction on Pacific highway.

Lane county—Surfacing 19 miles of Cougar creek-Preacher creek section of Alsea-Deadwood highway.

Malheur and Harney counties—Grading, surfacing and oiling 8.8 miles of south unit, Princeton-Polly farm section of Home-Princeton secondary highway.

## Flying Farmers Seek Aero Post

McMINNVILLE, Sept. 7 (AP)—The Flying Farmers of Oregon still want one of their members appointed to the state board of aeronautics.

The pilot-farmer group's annual convention closed yesterday with a resolution to that effect. Another called for speed-up of construction of landing strips in the state program. Earlier this year the group had been critical of the board's use of funds.

President Claude Williams, Prineville, was re-elected along with other officers. New directors are Roger Loening, Haines, and Lee Foster, Halsey; Sam Whitney, Newberg; and Williams were directed to work with the state aeronautics board on farm aviation problems.

The American Red Cross annually spends more money in behalf of servicemen than any other organization except the military establishment itself.

New and Used Construction Lumber  
Low Prices—Cash & Carry  
David A. Richardson  
Spring Lake, Oregon

## Car Hit By Train, Four Injured

MILWAUKIE, Ore., Sept. 7 (AP)—A small boy, his mother and two sisters were injured yesterday when a truck in which they were riding

was struck by a freight train engine at a crossing here.

State police said Mrs. Arleta Cendania, 29, who operates a small vegetable farm east of here, was driving home with three children. Two-year-old David suffered a leg fracture and internal injuries. His

mother and sisters, Darlene, 8, and Donna, 7, suffered cuts and bruises.

The northbound Southern Pacific was not moving fast, police said. The engine pushed the flatbed truck along the rails and then tipped it off the right-of-way.

**E**ase up! enjoy a glass

There's a full measure of pleasure in every glass of light and lively Blitz Weinhard. Light, cool, clear... lively, refreshing, satisfying.

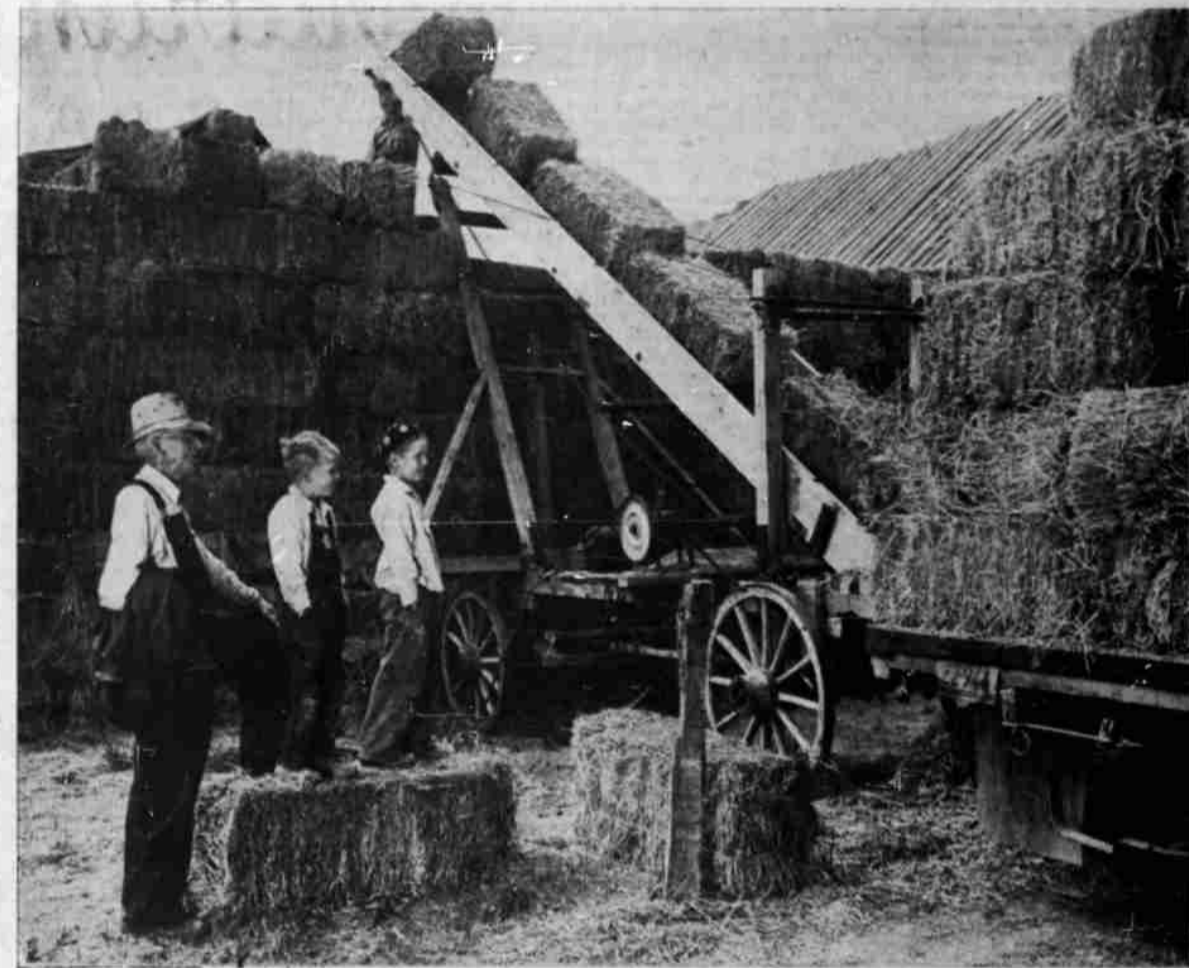
**Blitz Weinhard BEER**

Light and Lively

BLITZ WEINHARD COMPANY, PORTLAND, OREGON

Distributed by Western Wholesalers, 1003 E. Main, Klamath Falls, Ore.

## From Klamath's FINEST DAIRIES... Come Crater Lake's Fine Milks!



G. F. CARLTON AND SON. Forty-five years ago G. F. Carlton started his farming operation near Merrill. Today he and his son, Alfred Carlton, are "honor-roll" producers of fine milk. Upper photo shows Mr. Carlton with grandsons, Sammy, 8 and Dick, 6, watching while mountains of hay are stored to feed their fine herd through the winter months. Below is pictured the herd grazing in lush summer pastures of bluegrass and clover.

## KLAMATH FALLS CREAMERY HOME OF... CRATER LAKE DAIRY PRODUCTS



The **WHITE MAGIC SOAP QUIZ MAN** may call you on the phone at any time... **BE PREPARED...** have a package of **WHITE MAGIC SOAP** in your home. It will help you win.

**\$32,000.00** IN WESTINGHOUSE PRIZES

the Greatest PRIZE OFFER ever made to residents of 11 Western States only

**640 VALUABLE 80 EVERY WEEK PRIZES**

Here's all you have to do to be eligible to win in **WHITE MAGIC SOAP'S MAGIC QUIZ**

Just answer 2 easy questions if the White Magic Soap Quiz Man calls you on the phone.

**1 QUESTION FOR NEXT WEEK**  
September 12 in September 17  
**WHAT STATE IS KNOWN AS THE SUNFLOWER STATE?**

**2**—a question which will pertain to some portion of the printed matter on a package of **WHITE MAGIC SOAP**...

(Complete contest rules at Safeway)

**60** Westinghouse de Luxe vacuum cleaners with 7-plate attachment set, handlight and 8-foot flexible hose. Sells at \$49.95.

**80** Westinghouse electric food mixers. Streamlined design and easy to keep clean. Sells regularly at \$37.50.

**100** Westinghouse automatic pop-up toasters. Beautifully designed... toasts bread evenly. Sells at \$20.95.

**200** Westinghouse Streamliner automatic irons. Selected temperature is maintained, even heat distribution. Sells at \$12.95.

**20** WESTINGHOUSE RADIO-PHONOGRAPH COMBINATION SETS WITH AM AND FM, AUTOMATIC RECORD CHANGER, OR TELEVISION SET (MODEL R-223). SELLS REGULARLY AT \$299.95.

**20** WESTINGHOUSE LAUNDROMAT AUTOMATIC WASHERS INSTALLED IN YOUR HOME (normal installation) WITH 6 MONTHS' SUPPLY OF WHITE MAGIC SOAP. THE LAUNDROMAT REGULARLY SELLS FOR \$299.95.

**20** WESTINGHOUSE REFRIGERATORS WITH FROZEN FOOD STORAGE FOR 21 LBS. OF FOOD. 7.04 CU. FT. FULL SIZE. YET TAKES LITTLE SPACE. SELLS REGULARLY AT \$239.95.

Westinghouse roaster oven, 18-quart capacity. Roasts, bakes, stew, cooks a complete meal all at one time. Sells at \$39.95.

**80** Westinghouse Adjust-O-Matic waffle makers. Makes perfect waffles, light or dark, automatically. Sells at \$17.95.

**WINNERS FOR LAST WEEK**

VACUUM CLEANER: Mrs. Mable Stone, Portland, Oregon.  
AUTOMATIC IRON: Mrs. J. James Alden, Salem, Oregon.  
WAFLE BAKER: Mrs. Walter Kames, Tigard, Oregon.  
ROASTER OVEN: Mrs. James Redburn, Coos Bay, Oregon.  
FOOD MIXER: Mrs. Raymond Kosce, Malilla, Oregon.  
AUTOMATIC TOASTER: Mrs. Warren C. Bain, Portland, Oregon.

We make this sensational offer so you may discover this great, New Magic Soap that works wonders in either soft or the hardest water. Scientific washing tests prove White Magic Soap washes clothes cleaner than any nationally advertised washing product in Soft, Medium or Hard Water.

Compare this New Magical Wonder Soap, cup for cup, for all the qualities you want for washing things in your home... and compare the feel of White Magic Soap on your hands, and **YET WHITE MAGIC SOAP COSTS YOU LESS.**

Prove its superiority. If you are not completely satisfied with White Magic Soap just return the remaining portion in the carton, to the Safeway Store from which you bought it and the purchase price will be returned.

**BE SURE TO GET COMPLETE CONTEST RULES**

**at SAFEWAY**

**White Magic SOAP**