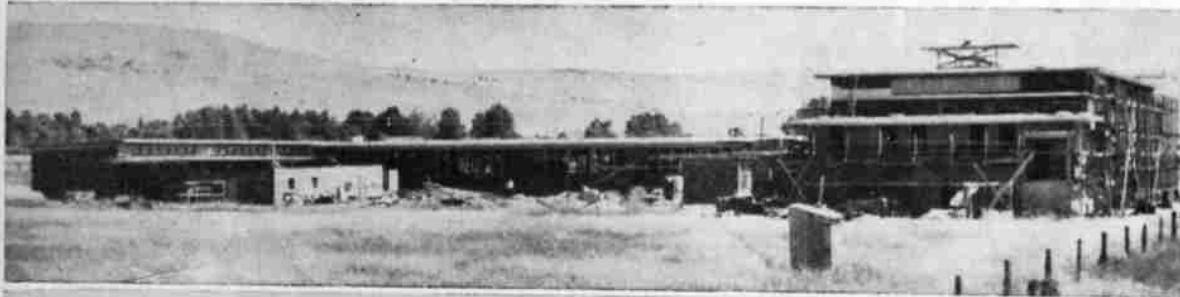
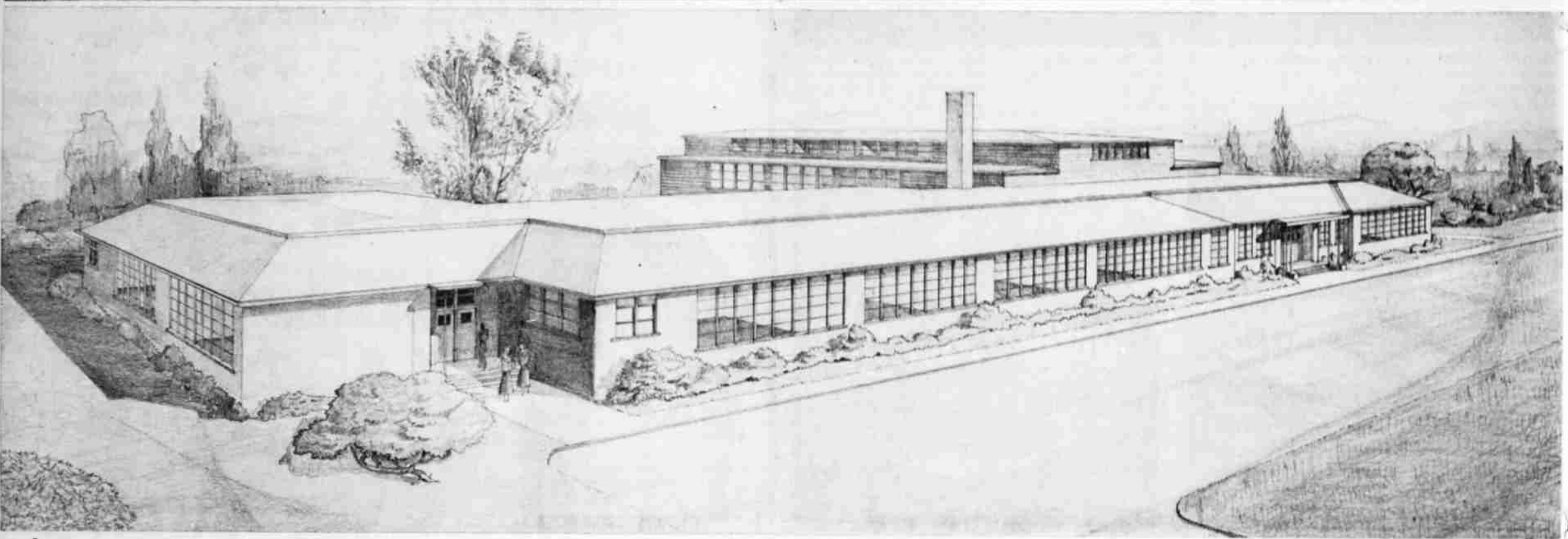
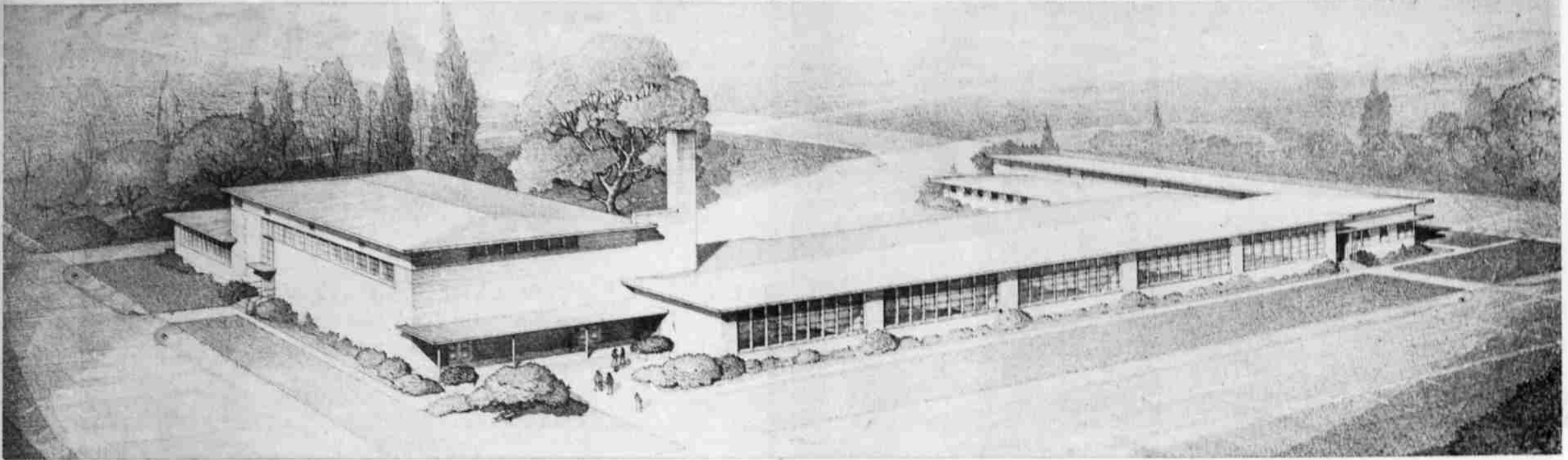


Construction Has Made Big School News This Summer



In The Pictures

Top—Architect's drawing of the \$275,000 Fred Peterson elementary school rising in the southeast suburbs with front on Clinton street.

Center—Drawing of the new Henley school, now under construction on the Merrill road. This picture shows the plant as it will appear when completed, and includes a section (at extreme right) which is part of future development and not now under construction.

Below—Four views of actual construction scenes—two above of Peterson school and two below of Henley school. Design is by Howard R. Ferrin, Klamath Falls architect.

School construction running upwards of a million dollars has been a major development activity of the summer in this area, helping materially in the employment situation and promising markedly improved facilities for hundreds of school children.

Major jobs in the strictly school class were the new Peterson school and the Henley high school. The Sacred Heart academy recreation-parish hall center is a major project in town, and there have been several smaller projects plus the finish of the Mills addition auditorium, Dorris, Dunsuir and other points outside the county have also seen important school plant improvements.

Peterson school, named in honor of former County Superintendent Fred Peterson, is a \$275,000 project facing on Clinton street in the southeast suburbs, aimed at relieving the elementary school jam in that area. This building will provide class rooms, administration unit, auditorium and play area, cafeteria, locker rooms and other facilities. It embodies many of the most modern school plant features.

Henley high school project, a \$142,000 job, will provide six classrooms, library, two science rooms and a home-making room. The present contract is for only part of the development planned there. For the time being, the new construction will be used with the old building as the high school plant, but later, an auditorium and additional classrooms will be added and the old building moved to the Henley grade school to take care of a space shortage there.

The Sacred Heart project (pictured elsewhere) amounts to a total of about \$141,000 and includes a gymnasium for the local parochial school. Other jobs in town include a cafeteria at Conger school, janitor's apartment at Mills, home economics room at the high school, boiler room at Fairview school. The Mills auditorium, long under construction, is now virtually complete and will be a welcome addition to community facilities. Other important building projects are in the offing, especially in the county. A federal appropriation may help build a physical education plant at Chiloquin soon. (For an idea of what Klamath schools were like in another era, see opposite page.)

Back to School with a New or Used Instrument from Derby's!

- Used Trombones 42⁵⁰ up
- Used Trumpets and Cornets 42⁵⁰ up
- Used Alto Saxophones 89⁵⁰ up
- Used Tenor Saxophones 99⁵⁰ up
- Violins 14⁹⁵ up
- Used Clarinets 52⁵⁰ up

All used instruments completely overhauled and guaranteed by Derby's



Accordions FOR RENT! Rent may be applied on purchase price

HEADQUARTERS for All CONN BAND INSTRUMENTS

Visit our store today. See the finest instruments in the world, manufactured by the world's largest band instrument company.



New Electric Guitars As low as 97⁵⁰



For those week-end record sessions— We have the records you need!



RECORD ALBUMS FOR VOLUMES OF ENJOYMENT!!

EXPERT INSTRUMENT REPAIRS

Have your instrument checked now!

Derby's Music Co.

FINE MUSICAL INSTRUMENTS 120 N. 7th Klamath Falls Phone 4519