

# Klamath Professional Men For Association To Win Voice In Local Affairs

Professional men in Klamath county have banded together to take an active hand in matters pertaining to their professions and to create a speaking voice for their occupations on political and public issues.

The organization, to be known as the Professional Council of Klamath Falls, was formed yesterday after months of planning and is patterned after a similar organization formed in Los Angeles. The idea is expected to spread over the state to strengthen and unify professional men in Oregon.

Belonging to the council are the Klamath County Bar association, Medical association, Dental association, certified public accountants,

engineers and architects. The various associations form the council and in turn have delegates—on a ratio of one to each 10 members of the individual professions in the county—serving on an executive board. Attorney Paul Farrns is president, Dr. Richard L. Currin vice president, Attorney Clay Burrell, secretary, and Kenneth Lambie, CPA, treasurer.

A primary function of the council will be to make the professions heard and felt on matters pertaining to professional men. Burrell said, and to that end the council plans to take an active hand in legislation and on public issues.

The same is done, Burrell said, by labor unions, farm groups, businessmen and the like, and will be done by the united professional group. One public issue in particular is now aimed directly at one of the professions, that of socialized medicine, and the council will undoubtedly try to go to bat for the interests of the medical profession in that respect, Burrell said.

In addition to working for the preservation of its own membership, the council can be expected to take its stand on other issues, much in the manner adopted by the chamber of commerce, labor organizations and the like.

The membership of the newly-organized body is enthusiastic over the potential workings of the council and in another year or two expects the organizational movement among professional groups to be statewide.

The Klamath Falls council is not a closed club, but will consider admission of any recognized professions.

# Poll Shows Arms Bill In Favor

PRINCETON, N. J., July 28—As debate starts on the administration's bill to re-arm Europe, a special nationwide telegraphic survey conducted by the American institute of public opinion shows the weight of public opinion today in favor of the basic principles of the Truman proposal.

The nation's first reaction to the proposal shows opinion divided as follows on the question:

"Do you approve or disapprove of President Truman's plan, announced Monday, to send war materials and money to countries who want to build up their military defenses as a protection against Russia?"

Approve	49%
Disapprove	38
Qualified	3
No opinion	10

This figure compares with a vote of 67 per cent in favor of the Atlantic pact as reported in July before senate ratification.

The institute conducted this 24-hour telegraphic survey through a new procedure which makes use of a nationwide panel of representative voters.

# Mrs. Leonard To Attend Meeting

Mrs. Joads Leonard, vice chairman of Oregon democrats, will be in Portland Saturday to attend an executive committee meeting of the state democratic central committee, a meeting called to make plans for a drive for party finances.

The executive committee also expects to ratify a constitution drawn up for government of the party organization in Oregon.

**SAFETY RECORD**  
PORTLAND, July 28 (AP)—This city was advised by the national safety council today that it had one of the nation's top safety records in the January-May period.

Portland and New Orleans scored highest in traffic safety for cities with populations over 200,000. Both recorded a 56 per cent drop in fatalities.

# Playgrounds Get Equipment

Additional playground equipment for Finley playground has been received and is being installed this week by the city recreation department.

The playground, located at the corner of California and Conger streets, will now have an eight-foot slide, two swings, multiple trapeze bar, trapeze rings and teeter-totters.

Other parks and playgrounds are also receiving equipment through Exchange club donations. Siskel park near Mills school received three swings, two see-saws and a merry-go-round. Henderson playground at Henderson and Wendling streets will receive the same type of equipment, as will St. Francis playground, St. Francis and Look-out streets, Esplanade park at Eldorado and Esplanade, and Maple park, Main and Riverside.

**FOR RENT**  
by week or month  
Sewing Machines  
Late Models  
Sewing Machine Service  
And Exchange  
2112 Shasta Way Phone 6771



CONNECTING SEATTLE with the eastern shore of Puget Sound is the unique floating Lake Washington bridge. This view is looking from Seattle toward Mercer Island, the other terminus of the floating structure.

# National Health Plan Important To Rural Areas

PULLMAN, July 28 (AP)—It is especially important for rural people to understand the proposed national health programs because they

stand to gain more from them than almost any other group, a rural health specialist said Wednesday.

Elin Anderson, extension worker for the U. S. department of agriculture, said a conservative estimate of time lost by farm operators due to illness last year totals 80,000,000 man days.

The dollar deficit in the nation's

bankroll is caused by industry's annual loss of 4,300,000,000 man years of work, she asserted.

"Health is a state of complete physical, mental and social well-being, not merely the absence of disease or infirmity," she said.

Miss Anderson addressed the western regional meeting of extension directors.

# Unique Floating Bridge, Once Center Of Hot Washington Row, Now Paid For

By FRED ZAVATTEO  
NEA Staff Correspondent  
SEATTLE (NEA)—After 20 years of arguing, a year and a half of building, and nine years of toll collecting, the only floating bridge in the United States was paid for this summer—19 years ahead of schedule.

Seattle has one of the world's four civilian pontoon bridges because an irate young man missed a ferry in 1919. As he watched the ferry paddle across Lake Washington toward Mercer Island, little more than a mile away, Homer M. Hadley, a young structural engineer, decided he had missed the boat for the last time. He would build a bridge.

He found he had chosen the world's worst bridge site. A lake depth of 150 to 200 feet underlaid with 100 feet of mud made the cost of a fixed bridge enormous. But Hadley continued to study the lake and, a few months later, he had the bridge built—on paper.

The initial reaction to his floating-bridge plan was definitely not favorable. People said it would hamper ship traffic and mar the city's beauty.

Hadley continued to show his plans to various civic organizations. Impressed by the logic and economy of his suggestions, they launched a "Build-a-Bridge" cam-

paign that eventually had the entire state in an uproar.

To settle the dispute, a State Toll Bridge Authority was created to study all methods of bridging the lake. After months of research, the board presented a solution incorporating virtually all of Hadley's ideas, and, in 1939, construction of the unique structure began.

As work on the 7800-foot floating section progressed, opponents to the bridge at first were not convinced that the 4458-ton concrete pontoon wouldn't sink. But the unbroken four-lane express highway across the lake, held in place by 50 60-ton anchors, has safely ridden out the most severe storms.

Although the water level of Lake Washington is controlled by government locks, possible water level fluctuations were not ignored. Resting on a system of hydraulic rockers, the bridge can tolerate a variation of three feet without harm.

No Bother  
Lake shipping has never been hindered by the bridge. It literally comes apart to form a passageway for large, ocean-going vessels. By drawing the channel pontoon into a specially-designed "bay" in a divided pontoon, a 200-foot opening is made in the bridge.

On June 30, 1949, 18 months after work began on the \$8,450,000 project, the first automobile "floated" across Lake Washington.

The bridge eliminates more than 14 miles of travel through congested residential areas to reach the expanding east shore. It provides a direct route from Seattle to the transcontinental highway through the Cascade mountains.

New community developments have furnished Seattle workers with suburban homesites within easy reach of their jobs. Grateful employees have almost forgotten the often abused alibi, "Boss, the ferry was late this morning."

# Lapel Tags For Salute Falls Out

"Klamath Falls Salutes" lapel tags are out this week for this month's salute town, Malin. They may be picked up at the chamber of commerce offices. The tags hook onto a lapel button, and are effective as advertisers of the salute when worn by store clerks and other persons who come into contact with the public.

**Used Records**  
SOUTHERN OREGON  
MUSIC COMPANY  
1330 Klamath Ave.

# Montgomery Ward

9th at Pine Store Hours—9 a.m. to 5:30 p.m. Phone 3188

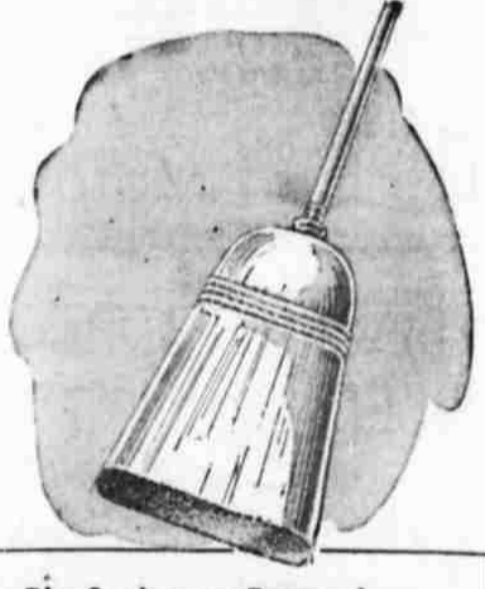
# PROOF! You save more at Wards



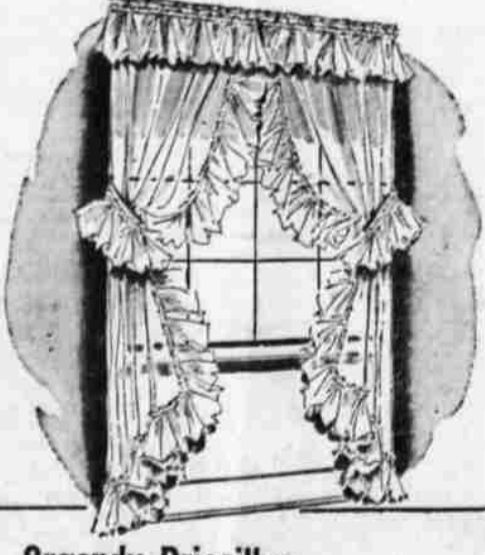
**Save! Junior Rayon Taffetas**  
Regularly 5.98 → **\$5**  
Hurry in for these. They are the very dresses we sold for 6.98 last year! Now, for a limited time only, we slash the price still lower! Swishing rayon taffetas in bright young plaids, some combined with solid rayon crepe. 9-15.



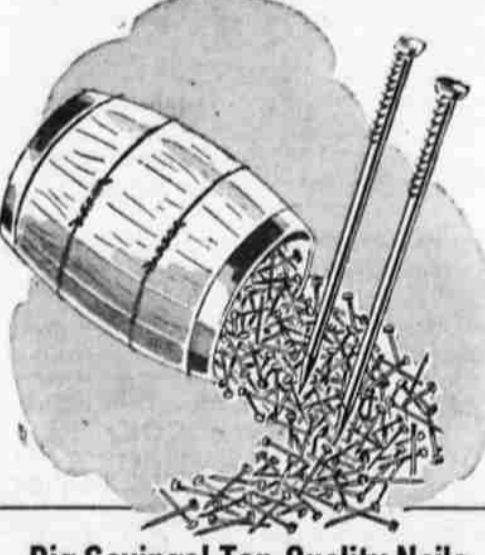
**Men's 8-Ounce Band Overall**  
Specially Priced! → **1.54**  
Western model Heavy-weight 8-oz. Sanitized blue denim. Cut for proper fit and comfort. Copper riveted strain points, double-stitched seams, strong Drill swing pockets. Reduced!



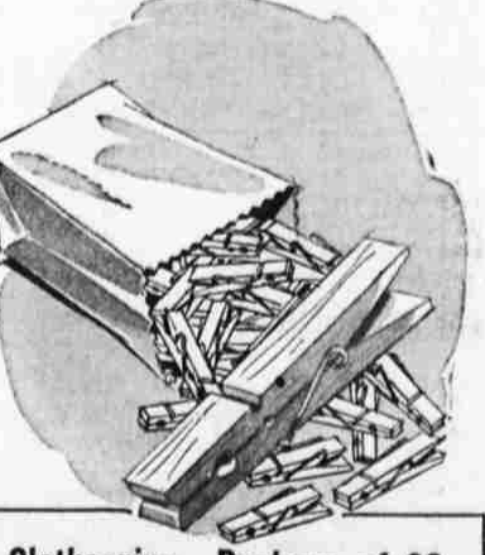
**Big Saving on Brooms!**  
Regularly 1.19 → **.77c**  
HURRY—quantities won't last long at this LOW sale price! Finest quality broom, corn—strong yet flexible—will last a long time! Smooth, lacquered wood handle. Buy several while sale-priced—for basement, garage, tool



**Organdy Priscillas**  
Regularly 2.98 → **2.27** pair  
"Dress-up" your windows at a cut-price! Crisp, snow-white organdy has a permanent washable finish... stays fresh longer! Curtains launder beautifully... never need starch! Ruffles are 5/8 in. deep! Each side 41x87".



**Big Savings! Top-Quality Nails**  
Reg. 12c Lb. → **8c** lb.  
Super Values Special! Your choice of 8, 10, 16, and 20 Penny sizes! Best quality... tough steel... sharp points that make hammering easy! Here's your chance to stock up at a sensationally low, money-saving price!



**Clothespins—Package of 36**  
Regularly 29c → **17c**  
You never have too many clothespins... stock-up NOW at this EXTRA-LOW sale price! Firm-holding, spring-type that work equally well on cotton or wire clotheslines! Smoothly finished to prevent snagging, tearing!

Montgomery Ward  
9th at Pine Phone 3188

# CLEARANCE

Women's Summer Nightwear

## COTTON CREPE GOWNS

Savings Up To 25%

## GOWNS

REGULAR SIZES

Reg. 2.39 NOW **1.97**

EXTRA SIZES

Reg. 2.79 NOW **1.97**

**SPECIAL PURCHASE!**  
**RAYON KNIT GOWNS**

Small and Medium **99c**

Large Sizes **1.19**