

Fast Time Petition "Success"

PORTLAND, July 14 (AP)—The campaign to keep daylight saving time was approaching victory today, with the deadline only one day off.

Daylight time, now effective in Portland and many surrounding towns, will be banned in Oregon Saturday unless referendum petitions are filed tomorrow.

Lee Stidd Jr., chairman of the campaign committee, said 12,948 of the necessary 15,000 signatures have already been certified by county courts, and that nearly 4,000 more are now being checked. "That"—unless an unusually large number should prove invalid—"will give us a comfortable margin," he said.

Stidd planned to file the referendum petition at Salem tomorrow. The legislature's measure, which banned daylight saving time in Oregon unless proclaimed by the governor, would then not go into effect until after the referendum in November, 1950.

The exact effect of a referendum failure was not certain. The state attorney general has not made a formal ruling, but he indicated that while all official business would have to be conducted on standard time—commercial operations might be able to continue on daylight time, anyway.

Another referendum—a bid against the legislature's old age pension law—reached success earlier this week. That referendum was conducted by old age groups, who wanted more liberal pension rules.

Two other referendum attempts were apparently abandoned. Newborn nearly enough signatures were obtained on petitions to halt construction of a Rogue river dam, and to cancel a law requiring the licensing of electrical contractors.

In The Day's News

(Continued from Page One)

than your income—you might have escaped the harrowing experience of going bankrupt.

AGAIN, please, don't get me wrong. Mr. President. There is nothing creditable about going broke AS AN INDIVIDUAL—especially when, as I understand you did, you pay up all your honest debts so that NO ONE ELSE suffers by your lack of business acumen. Many a good man has gone broke and has come back better than ever.

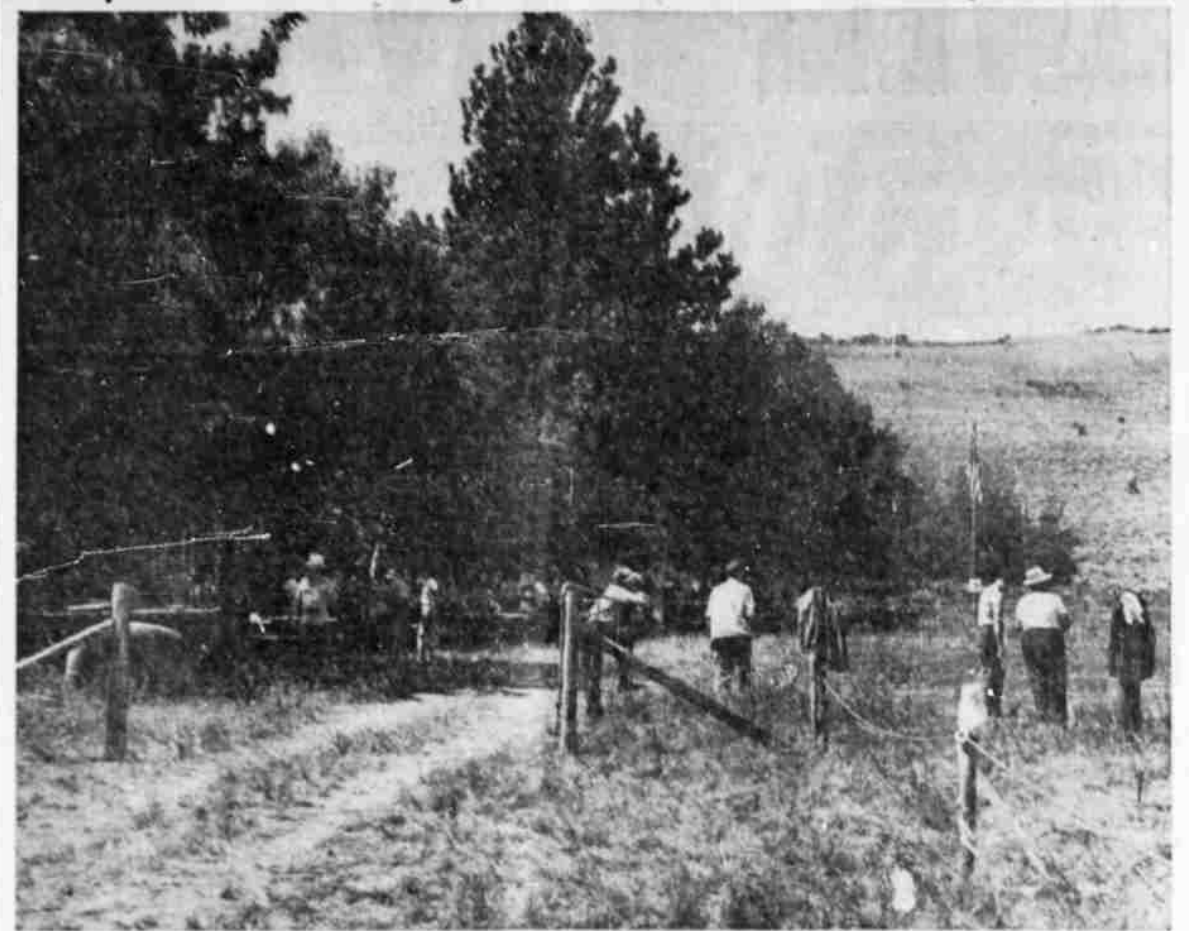
But here is something I feel I must say to you, and I think you will agree that I am right: The difference between running an individual, private business into bankruptcy and RUNNING A NATION INTO BANKRUPTCY is as wide as the distance between our earth and the farthest tiny, twinkling star in the solar system—and that distance has to be measured in millions of light-years.

An individual who goes broke can come back. The NATION that goes broke NEVER comes back. Greece and Rome point that moral for us. The sorrow, the suffering, the grinding poverty that ensues when nations go broke are beyond description.

I don't think you want to be responsible for anything like that, Mr. President. But when you talk of spending more than we take in in a time like this when our debt is already physically greater than any nation's debt ever was before, you're steering our boat into a rapid at whose lower end lies a destroying calaract.

I hope you'll pardon me, but I just couldn't help saying this to you as a friend.

Antelope Herd Starts Moving To Hart Mountain For Blue Sky Hotel Meet



Here's the Blue Sky hotel, where members of the unique Order of the Antelope will foregather this weekend for their annual camping excursion. The "hotel" is a pine and aspen grove high on towering Hart mountain in Lake county, whose people sponsor the yearly affair. It is located on the Hart mountain antelope refuge. The picture was taken at last year's convention.

It's A Good Time To—:

- Freeze food for winter.
- Can food for winter.
- Paint barns and buildings during quick-drying weather.
- Tighten fences.
- Sort spud and grain sacks.
- Check harvest machinery.
- Check fire fighting equipment.
- Go swimming.

Support On Wheat Set At \$1.88

The county loan rate or support price on wheat for Klamath county has just been announced at \$1.88 per bushel. The rate is based on the wheat parity price as of July 1, 1949 of \$2.17 per bushel and is for U. S. Grade No. 1 wheat. The terminal loan rate at Portland, and other nearby terminals is \$2.16 per bushel. The county loan rates for other Klamath grains are as follows: barley—\$1.12 per bu.; rye—\$1.26 per bu.; and oats—\$1.07 per bu. These prices are for U. S. No. 1 grade. There will be a few cents discount for grades lower than No. 1.

7-Year Term For Assault Given Kelley

Arthur Jack Kelley, 35-year-old Negro, yesterday afternoon became the 32nd person sentenced to prison from the local circuit court since January 1.

He was sentenced to a term not to exceed seven years in the Oregon penitentiary on a charge of assault, armed with a dangerous weapon.

Kelley had been on probation on that charge after pleading guilty last September. Tuesday night he became involved in another fracas at his Broad street cabin and admitted slugging Mary Robinson, 31, his common law wife, with a double-bit ax.

That resulted in revocation of his probation by Circuit Judge David H. Vandenberg.

Bruce Singer Corwin, 19, of Burbank, Calif., came into circuit court yesterday afternoon to plead guilty to a charge of burglary, but to date was set for his sentence.

The youth Tuesday night had been returned from Eugene to face prosecution for burglarizing an apartment at 221 Spring, July 3. He waived grand jury indictment.

Support On Wheat Set At \$1.88

The county loan rate or support price on wheat for Klamath county has just been announced at \$1.88 per bushel. The rate is based on the wheat parity price as of July 1, 1949 of \$2.17 per bushel and is for U. S. Grade No. 1 wheat. The terminal loan rate at Portland, and other nearby terminals is \$2.16 per bushel. The county loan rates for other Klamath grains are as follows: barley—\$1.12 per bu.; rye—\$1.26 per bu.; and oats—\$1.07 per bu. These prices are for U. S. No. 1 grade. There will be a few cents discount for grades lower than No. 1.

Grain prices will be supported by loans or purchase agreements as in 1948. Commodity loans will be available on grain stored in good granaries or bins. These loans will bear interest at the rate of 3 per cent, and will mature April 30, 1950 or sooner on demand of CCC. Both loans and purchase agreements will be available through January 31, 1950.

Purchase agreements are merely an agreement between the producer and CCC that CCC will purchase the grain at the support price within 30 days after April 30, 1950.

Commodity loans are for those grain producers who need the returns from their grain crop before the following spring after harvest, while purchase agreements are intended for those producers who want a guaranteed price for their grain.

EXHIBIT
DELAKE, Ore., July 14 (AP)—The Lagoon County Agate society will hold its seventh annual exhibit here Saturday and Sunday.

Stones will be displayed by Woodburn, Eugene, Portland, and Olympia, Wash., owners, as well as by local groups.

BULLETIN

WASHINGTON, July 14 (AP)—President Truman announced plans today to step up government buying in areas hardest hit by the economic decline.

The action, the president told a news conference, will not increase government spending, nor raise budget deficits in any way.

TOWER
HURRY! Ends Soon
EYE SHOWS 4:45-9:00 P. M.
TODAY!

TULSA
COLOR BY TECHNICOLOR
SUSAN HAYWARD • PRESTON FIGG • ARMANDO

SATURDAY
ROBERT AND COSTELLO
DICK POWELL
AND THE MAYNARD SISTERS
Tim Holt

WESTERN HERITAGE

BOORS OPEN 6:30 P. M.

PELICAN NOW

PICTURE OF THE MONTH!
—Liberty Mag
—Cosopolitan Mag

M-G-M brings you a true-life love story to take to your heart!

James June
STEWART-ALLYSON

as the lanky, grinning Monty Stratton who loved enough to get a second chance at life!

MGM's
"The STRATTON story"

FRANK MORGAN
AGNES MOOREHEAD
BILL WILLIAMS

A GREAT TRUE MOTION PICTURE!

Extra!

TOM and JERRY CARTOON
—"Polka Dot Puss"—
Pete Smith Novelty — News

Gettle Street Parking Planned

An order to prohibit all parking on the west side of Gettle street in the block between 9th and Crosby was signed yesterday by the county court.

The order prohibits parking of any type vehicle, day or night, along that side of the street where the Suburban fire department station is located.

5 MIN. FROM TOWN
30 FEET. 1000 TONS
LOG CABIN
Klamath Falls

O And C Pine Tracts Sold

The Gilchrist Timber company of Gilchrist and Puckett and Scherer of Keno have purchased tracts of Oregon and California lumber at a Portland sale by the agency.

The tracts failed to draw any competitive bidding.

Puckett and Scherer bought 490,000 feet of ponderosa, 200,000 feet of Douglas fir, 50,000 feet of sugar pine and a small amount of other species located about five miles southwest of Prineville. Price of the sugar pine was \$21.50 a thousand and on the ponderosa \$15.20 a thousand.

The Gilchrist firm bought timber located three miles southeast of La Pine, paying \$13.45 a thousand for some 122,000 feet of ponderosa.

Girl Scouts, CFG Plan For Summer Camp

Summer plans of the Girl Scouts and Camp Fire Girls are being fulfilled now. The day camp for Scouts was held for one week at Moore park in June and two more weeks are planned for August.

At present the Camp Fire Girls are holding their three week summer day camp at the park. Both camp programs are similar in the crafts and play they provide.

Camp Esther Applegate at the Lake of the Woods is already in its first week. Camp will run from July 18 to 31 for the Scouts and July 31 to August 21 for the Camp Fire Girls.

The two groups own the camp property, and they alternate July and August camping times throughout the year.

Buses have been chartered from Klamath Union high school to take the groups back and forth to camp. They leave from the high school at 8:30 on Sunday mornings.

About 300 girls have registered for the Scout season, however, the Scout office revealed that the third week was not filled as yet. Those wishing to register for the third week may do so at 321 Main street.

Fee for Scout camp is \$11 a week for Scouts and \$13 for non-Scouts. A \$2 registration fee is also required.

Portland Wheat

PORTLAND, July 14 (AP)—Cash wheat (bid): soft white \$2.09, soft white (excluding Rex) \$2.09, white club \$2.09, western red \$2.09.

Hard red winter: Ordinary \$2.09, 10 per cent \$2.09, 11 per cent \$2.10, 12 per cent \$2.12.

Hard white hard: Ordinary \$2.09, 10 per cent \$2.10, 11 per cent \$2.11, 12 per cent \$2.12.

Today's car receipts: Wheat \$3, barley 3, flour 7, corn 8, oats 4, mill-feed 11.

Livestock

SOUTH SAN FRANCISCO, July 14 (AP)—CATTLE, salable 190, calves 149, supply mainly cows and predominantly canners, and cutters; early trade very drab; demand exceedingly narrow; a few medium and good 800-1000 lb. feeder steers \$20.00; canner and cutter cows \$10.00-12.00; no other sales of cows early; good weighty sausage bulls \$22.00; call trade slow; early sales limited to a few cull and common grades at a weak price from \$13.00-19.00.

Hogs, salable 150; butchers 50 cents higher; sows steady; good and choice 180-240 lb. butchers \$25.00; old head good sows \$16.00.

Sheep, salable 2200; supply also includes several hundred head from Wednesday; no early trade; indications demand comparatively narrow and underdone weak; Wednesday's prices largely \$1.00 lower; several decks good spring lambs \$23.50-24.00; only one small lot \$25.00 and some late sales of medium and good lambs at \$20.00 and \$22.00; slaughter ewes steady; medium and good \$6.50 and \$8.00; common mostly \$5.00.

CHICAGO, July 14 (AP)—(USDA): Salable beef 7000; general market active and 50 cents higher; trade closed slow; top \$23 for several loads choice 180-210 lb.; bulk 170-240 lb. \$22.25-23.00; 250-270 lb. \$21.00-22.00; few 280-300 lb. \$19.75-20.75; heavier weights scarce; odd lots up to 350 lb. down to around \$17.75; good and choice sows under 240 lb. \$17.00-18.50; few \$18.75; 250-375 lb. \$13.75-16.75; 375-400 lb. \$14.75-16.00; 400-450 lb. \$13.50-15.00; 475-550 lb. \$12.00-13.50; odd head heavier sows as low as \$11.50.

Salable cattle 3000; salable calves 400; moderately active trade on most slaughter classes; beef steers and heifers strong to 25 cents higher; instances up more; cows uneven, averaging mostly steady; bulls steady to 50 cents lower; vealers steady; good and choice fed steers \$23.00-27.00; two loads choice 1340-1477 lb. at latter price top \$28.25 for load high-choice 1184 lb. most common to medium steers \$18.50-24.75; choice heifers scarce; bulk medium to good \$22.00-26.00; bulk common and medium beef cows \$15.50-18.50; few good \$19.00-20.00; canners and cutters \$12.50-16.00; medium and good sausage bulls \$21.00-23.25; odd head \$23.50; vealers \$26 down.

Salable sheep 500; good and choice weighty spring lambs firm; such kinds mostly \$26.00-26.50; latter price top but quotable higher; all other grades light lambs weak to 50 cents lower; slaughter ewes steady at \$9.50 down.

Fish Lake Fire Destroys Units

Fire at Fish Lake Wednesday night reduced two structures and a pump-in plant on the Medford irrigation district to ashes before a fire fighting crew arrived from Lake of the Woods.

The fire which apparently started in the pumping plant from an unknown origin, razed the ditcher's cabin and a combination garage-woodshed. Damage was estimated at between \$4000 and \$5000.

Word of the fire reached Lake of the Woods at 9 p. m. Wednesday and the crew was dispatched immediately with equipment. The crew arrived in time to wet down the ashes and keep the fire from spreading into adjacent forest land.

Arctic waters have relatively small salt content because of lack of evaporation and the inflow of many rivers.

Young Demos To Support Elliott Recall

PORTLAND, July 14 (AP)—Executive board members of the Young Democrats of Multnomah county voted last night to support a recall move against Sheriff M. L. Elliott.

The campaign to oust the young democratic county official from the office he took over in January will be organized tonight at a public meeting to be presided over by Admiral Thomas L. Gatch (retired).

Elliott issued a statement last night in which he again refused to resign, asked the state police for law enforcement assistance in the county in order to reduce the county uniform division as recommended by a county tax conservation committee, said deputies no longer could take suitable employment after Sunday and again asked charges he had made against Stanley MacDonald, identification bureau chief he had dismissed.

Debris Tossing Delays Grading

Residential alley grading in the city is being held up because of interference of debris strewn in the alleys by residents, it was learned today from Councilman A. F. Conroy, who is urging cooperation from householders.

Rubbish, trash, piles of lumber and other obstacles make it impossible for the city grader to operate in the majority of alleys, Conroy said.

Red Cross Lauds Swimming Program

The Klamath county Red Cross urges cooperation and participation in the swimming instruction program being offered this summer at the Mallin pool and the Oregon Tech pool.

Stress is placed on safety in water sports in the swimming lessons, which range from instructions for beginners, both children and adults, through those with more advanced swimming ability.

The Red Cross office will be happy to furnish any information concerning the program. The telephone number is 7184.

Grass Fires Keep Firemen On Jump

Three grass fires called city firemen out Wednesday, but loss of a small chicken house was the worst damage.

The first was at 2:48 p. m. at 224 Cook where a grass fire spread to an empty chicken house. The next call was at 3:50 p. m. to 1739 Oregon avenue, and the third, to the 1700 block on Crescent at 7:50 p. m. Both did no damage.

Rogue River Forest Closures Go On

Area and road closures in the Klamath district of the Rogue River national forest went into effect July 9.

Approximately six sections in the Seven Mile area and southwest of the Seven-Mile guard station are now closed to motorists and campers. This is the same closure that was effective last year and the only one this year on Klamath district.

Last year closures were also imposed on Scott and Sand creeks and the Pinney Sale area west of Harri-man lodge.

REUNION
PORTLAND, July 14 (AP)—Veterans of the 41st (Sunset) division will hold a reunion here tomorrow with sessions at the armory.

All the raw materials used in the making of fine American hand-made glass are found in the United States.

Women Conduct Tule Kiwanis Meet

TULELAKE, Calif., July 14 (AP)—Mrs. Paul Madini, wife of the Tulelake Kiwanis club president, was mistress of ceremonies Wednesday night for the club's annual Ladies Night.

About 80 members and their wives, including a large delegation from the Klamath Kiwanis club were on hand.

A social hour preceded dinner served at the Sportman's hotel.

Mother Dies Saving Child

ASTORIA, July 14 (AP)—A 30-year-old mother was credited today with sacrificing her life to save her small son.

An autopsy showed that Mrs. Florence Rita Peterson, 30, died of injuries inflicted when she tumbled out of a moving car after grabbing her three-year-old boy to safety.

The car overturned on its side on the road in which Mrs. Peterson and her husband were riding last Sunday. He started to fall out.

The mother lunged for him, yanked him back to the safety of the car, but lost her own balance. She crashed to the pavement just as her husband applied the brakes to stop the car.

Mrs. Peterson died in a hospital Tuesday. She came here from Boston a year ago to join her husband, Carl, who is stationed at Tongue Point naval station.

PINE TREE NOW
Continuous Daily From 1:30 P. M.
ADVENTURE!!
COLOR BY TECHNICOLOR

Robert MITCHUM • Myrna LOY
The Red Pony
with LEVY CALDER and starring PETER WELLS

2 Thrill Hits!
TARZAN'S
NEW DARING!
New Danger!
Magic Fountain

Las Barker • Brenda Joyce
Albert Dekker • Evelyn Ankers

TWO COMPLETE OVENS



... IN THIS NEW GENERAL ELECTRIC "PUSH-BUTTON" RANGE!

Looking for complete cooking convenience? Stop right here. Because this wonderful, new G-E Automatic Range has it! Clips cooking time. Now you can prepare several oven dishes at once... a roast in one spacious oven, baked biscuits in the other. Each oven warms, bakes, broils or roasts on its own. Automatic timer-controlled, or you can operate each oven separately—by hand. Just think—everything's ready for eating at one time.

Wonderful "push-button" panel, too... with "Tel-A-Cook" lights that show what heat is on each cooking unit. Until you've actually tried this sensational, new way to "cook with your finger tips" you can't really imagine how perfectly easy and simple cooking can be!

7 Other Models Available.

GENERAL ELECTRIC
\$39.99 DOWN
As long as 24 months to pay.

FYOCK'S GENERAL ELECTRIC STORE
1001 Main Phone 5400

Driver Held In Accident

A Sacramento driver was arrested this morning by state police following an accident two miles west of Keno on highway 66 in which Mrs. Zola Jordan of Carson City was slightly injured.

Irvin Smith, Sacramento, was charged with driving on the wrong side of the highway. He pleaded not guilty in justice court and was lodged in the county jail in lieu of \$500 bail.

A hearing on the charge is to be held tomorrow morning.

Smith, state police said, was driving toward Klamath Falls when he rounded a sharp curve and apparently met a gasoline transport truck on the highway.

Smith swerved his car onto the right-hand lane, police said, and collided almost head-on with the car driven by Mrs. Jordan.

The woman was taken to Klamath Valley hospital for treatment of a cut on her head.

The name "Thule" was applied at different times in antiquity to Norway and to Iceland.



Mac Sayers--
Spontaneous combustion is the result of a man's will-power and a woman's won't-power meeting head-on.

The LUGGAGE SHOP
1015 Main Phone 9113