

# JUDITH COPLON FOUND 'GUILTY'

## In The Day's News

**By FRANK JENKINS**

THE recent meeting of the foreign ministers in Paris has reached the post-mortem stage in the news. Our man Acheson says: "Russia had been put on the defensive in the struggle for Europe and was afraid to relax its iron grip on Eastern Germany" (and so dared not withdraw Moscow's plan to force withdrawal of ALL occupying armies.)

Russia's man Vishinsky says: "Russia's firmness forced a Western retreat."

ALL of which reminds us that one of the first principles of diplomacy is that in the pinches everybody must be given a chance to save his face.

THE government housing program, involving a long-term expenditure of 14 billion dollars for slum clearance and for 810,000 publicly owned city dwelling units, is adopted by the house of representatives by a narrow majority.

It had already passed the senate in approximately similar form, and it seems likely that it may go to the White House in its finished form by the end of this week. The President is expected to sign it without delay, as it is one of his major projects.

MAYBE it's a good thing. A lot of people (including Senator Taft) think so.

As for me, I'm so old-fashioned that if I want to rent a new house I'd rather go to some private individual who has saved up some money for investment and talk him into building a house and renting it to me.

That is to say, I'd rather deal with some other private individual than with a government agent. My experience has been that, as individuals, government agents are nice people, but when it comes to making a deal with them they have to deal AS AGENTS OF THE GOVERNMENT, and the government in Washington is a long way off and has to unwind a lot of red tape before any deal can be completed.

As a result, there is a lot of delay and confusion in getting the deal wound up. I find that this delay and confusion tend to IRK me. But after all I'm only one individual and it takes a lot of individuals to make up a country as big as ours. Maybe most people prefer to deal with the government.

IF you're a hard-boiled, ruggedly individualistic citizen of the old school, trained to get it for yourself or do without it, you may think it a little odd that the members of our congress should vote billions of dollars of the public's money to build 810,000 housing units in a nation that has some what more than 42 MILLION FAMILIES.

How about the other 41 million family units?

Looked at realistically, it seems to involve a certain amount of favoritism.

REMEMBER this:

IT ALL HAPPENED IN WASHINGTON.

Last night in Washington a man sat down quietly at one of the gates to the White House and put a long, white hood over his head. The White House cop on duty at the gate asked him what he wanted.

"I want a cigarette," he said. "I'll put a cigarette in his mouth and light it. Then he looked at his watch. On his hip, he carried a long sheathed knife. He sat there peacefully and smoked.

After a while, the police came and took him away. He went along quietly, as if that was what he had been expecting.

Anything can happen in Washington.

**Couple Injured In Accident**

Mr. and Mrs. William C. Rose, 8220 Cottage, were slightly injured when their car collided with a truck-trailer on the highway just east of Bend Wednesday afternoon.

Both are in Hillside hospital, but are expected to be released soon.

# Herald and News

PRICE FIVE CENTS

KLAMATH FALLS, OREGON, THURSDAY, JUNE 28, 1949

Telephone 8111

No. 3015

**WEATHER**

Klamath Falls and Vicinity—Fair today; tonight and Friday, High today 76, Low tonight 51 to 53, High Friday 78.

Max. (June 29) 73 Min. 49

Precipitation last 24 hours 0.00



**QUEEN JOYCE AT HOME** on her ranch near Fort Klamath, demonstrates above how she comes by her riding talents honestly. Pretty, 17-year-old Miss Copeland says she gets up every morning at 5 o'clock to round up the cows for milking. She's riding her horse "Coolie," a black gelding, during the Klamath Basin Roundup, July 2, 3 and 4. Below she frolics with her dog, Kim, and caresses Coolie. "Kim and Coolie are my best pals," Joyce says.

## Queen Joyce Is Rodeo Queen Who Knows Her Way Around Horses, Ranch Chores

**By RED HURD**

If you think pretty Joyce Copeland, 1949 Klamath Basin Rodeo queen, confines her talents to riding a horse in a graceful manner, well, then you don't know Queen Joyce, with the light brown hair and blue eyes.

A gabfest with the 17-year-old Fort Klamath girl and a visit to the 21-acre ranch on which she lives with her parents, Mr. and Mrs. Alvin Copeland, just off the highway in the interesting town 40 miles north will prove to you she's quite a gal.

Her first love, of course, is horses, and she's been riding since she was a little girl about six years old. But her second choice, and a close second, one learns after talking with Joyce, is art.

"I like to paint scenery pictures best," Joyce says. Her mother adds that she's talented also on timing photographs.

She's dead serious about her art, too. Two days after the queen's crown was placed on her head, she

enrolled for the summer art school at Oregon Tech. She hopes to go to college after high school graduation and major in art.

She graduates from Klamath Union high school next year.

She likes to dance, swim, ski and ice skate too. And after watching her, you immediately get the impression she'd be graceful in any sport she tries.

Joyce was born in Eugene January 30, 1932. However, she's lived in Fort Klamath most of her life with the exception of several stays in Ketchikan, Alaska, where she spent her freshman year in high school before returning to Fort Klamath.

Asked how she liked Alaska, Queen Joyce answered, "All right, but I didn't have any horses to ride." Believe me, watching Joyce sparkle with joy when astride her black gelding, "Coolie," you can't help but feel that must have been the biggest sacrifice she ever made.

"But I had fun riding boats and flying in airplanes," she adds with a charming grin. Her father worked

as an airplane mechanic in a Ketchikan plant.

Joyce hopped a big airliner when she was 12 years old and came down to Klamath Falls all alone to visit her aunt.

Watching Joyce round up the horses, feed the calves and perform other ranch duties while posing for pictures convinces one that she's not kidding when she says she gets up early every morning and helps around the ranch.

Her father and mother are proud of her and were "as surprised as Joyce" when she was heralded queen at the armory last Saturday night.

Your interviewer forgot to ask Her Majesty if she could cook. But maybe it's because her charm and wholesomeness leads one to believe that she can do almost anything, and she must feel at home in the culinary department.

When asked about her boy friend, Queen Joyce just grinned and said, "I don't go steady."

## Lewis Orders Soft Coal Miners In East To Start Working Three-Day Week

**WHITE SULPHUR SPRINGS, W. Va., June 28 (AP)—**John L. Lewis today ordered soft coal miners east of the Mississippi river to work a three-day week starting next Tuesday, abandoning his traditional "no contract, no work" policy.

The contract with the soft coal industry expires at midnight tonight, but Lewis directed his miners to stay on the job for a short work week "to remove the stresses and strains which could cause industry and public irritation."

He told the miners east of the Mississippi to work Tuesday, Wednesday and Thursday next week, when they return from their present 10-day vacation. After that, Lewis advised the diggers to work on Monday, Tuesday and Wednesday of each week.

There was no time limit to the arrangement, although north and west the coal operators believe they have a contract until August 14 under terms of the Taft-Hartley act.

Mines west of the Mississippi are not affected by the three-day limitation, but Lewis advised his members there to begin work on Monday "and continue consecutively during the week for the number of days worked by the mines."

However, he restrained them from working on any Saturday.

The same contract terms will remain in force despite the termination of the one-year agreement tonight.

The order blanketed all east-of-Mississippi operations, including those of the Southern Coal Producers association and the U. S. Steel corporation, with which Lewis is holding separate contract negotiations.

## Damage By Frost May Not Be Bad

Potato farmers took a more optimistic view of the frost damage situation today but there was still much to be determined as to the effect of the Tuesday night freeze on spuds, grain, clover and other growing Klamath crops.

Assistant County Agent Walt Jendrzewski said that there is no doubt some damage was done to grain, especially dry land grain that had started to head out. Irrigated fields may have fared better. He said it will take two or three days more to get a more accurate picture of the grain situation.

**Spuds Set Back**

Potatoes experienced a definite setback in the low temperatures Tuesday night, but a good crop of spuds can still be obtained in the Klamath basin this year, Jendrzewski said. Much depends on two factors—whether the potatoes escape further severe frothing later in the growing season, and whether there is a long, warm spell in the early fall.

If these factors are favorable, the agent said, the yield can still be satisfactory.

Last night's temperature was up here and over the state as a whole. The minimum reading at Klamath Falls was 48. The weather man at the Portland office, who had a way of running 24 hours off schedule last year, appears to be doing it again. He forecast a colder night Wednesday than Tuesday, but it turned out the reverse of that.

There may have been some spotty frost last night, however. A report from Malin told of white frost on buildings there at 6 a. m. today. However, the main concern now is not what happened in the next night or two, but what may happen in late July or August.

The forecast for tonight at Klamath Falls is 24-39. Generally warmer weather was predicted over the state.

Jendrzewski's trip over the basin area yesterday produced some interesting observations. He said there were pockets that evidently escaped damage while most of the basin took a crackdown. He noted untouched fields on land operated by Elmer Lemler, John O'Neill and Troy Qualls in the Merrill district; Scott Warren at Algoma; Jerry Short at Wocua. A field of potatoes on the Rex High place in Poo valley went completely unscathed, while surrounding fields took a bad burn.

## Driver Due To Be Cited

A warrant of arrest was to be served on Richard Shuck, 28, sometime this afternoon at Hillside hospital. Deputy Sheriff Marion Barnes said this morning.

Shuck has been charged with negligent homicide in connection with the death Monday night of 74-year-old Robert Henry Anderson in an automobile accident north of Merrill.

He will be arraigned on the charge in justice court as soon as he is able to leave the hospital. Shuck entered Hillside Tuesday afternoon for "observation" and today was reported without serious injury.

Justice of the Peace J. A. Mahoney said he would set Shuck's bond at \$10,000. He is represented by attorney U. S. Balentine.

## 290 Tagged For Death On Fourth

**CHICAGO, June 28 (AP)—**The national safety council estimated today that 290 Americans will die in traffic accidents during the three-day Fourth of July celebration.

This carnage, the council said, will be accomplished by 33 million vehicles burning 340 million gallons of gasoline to travel about 4 1/2 billion miles during the holiday.

No estimate was made of the total that will be taken by drowning, fireworks accidents, heat exhaustion, food poisoning and other summer holiday hazards.



**SPY—Judith Coplon** was found guilty today on two counts of spying for Russia.

## Eddie Waitkus Assailant Held Insane

**CHICAGO, June 28 (AP)—**In rapid-fire disposal of legal routine, the 19-year-old girl admirer who shot First Baseman Eddie Waitkus today was adjudged insane and committed to the Kankakee state hospital.

The girl, Ruth Ann Steinbagen, appeared in felony court with the man she shot. After preliminary proceedings she was bound over to a grand jury.

A true bill was immediately voted and the indictment returned before Chief Justice James J. McDermott of criminal court. This was shortly after Waitkus, sitting in a wheelchair, confronted the girl for the first time since she shot him in a hotel room June 15.

Then a jury of six men and six women adjudged the girl insane. She was committed to the state hospital at Kankakee, Ill., and will be taken there later today.

## WTC Takes Over Firms In Washington

**TACOMA, June 28 (AP)—**The Willapa Harbor Lumber Mills and White River Lumber company will be merged this afternoon into the Weyerhaeuser Timber company in a \$10,000,000 stock transaction, Weyerhaeuser officials announced today.

The merger agreement, approved this week in Enumclaw and Raymond by stockholders of the two companies was announced by J. P. Weyerhaeuser Jr., president of the company.

The act, in effect, completes the absorption of the two companies by the larger timber firm. Weyerhaeuser has owned approximately 70 per cent of the Willapa company's outstanding stock since the latter was formed in 1931 and 50 per cent of the White River company since it was organized in 1929.

Stockholders of the Willapa company received one timber company share for each five stocks in the Crays Harbor concern. One White River share was exchanged for three Weyerhaeuser shares.

The 180,000 Weyerhaeuser shares issued in exchange for the 300,000 Willapa Harbor and 40,000 White River shares are worth approximately \$55 each.

The merger, Weyerhaeuser said, will "provide operating economies through the integration of forest management, research, logging, sawmill and pulp mill operations."

## Government Clerk Said Soviet Spy

**WASHINGTON, June 28 (AP)—**Judith Coplon was convicted today of being a spy for Russia.

The jury convicted her on both counts of the indictment against her. She faces a maximum sentence of 15 years in prison and a fine of \$12,000.

The jury announced its verdict shortly after 1:30 p. m. (EST) after having her fate in its hands for almost 27 hours. It reported ready to give its decision at 1:10 p. m., 24 hours 55 minutes after receiving the case.

The jam-packed courtroom was deathly silent when the jury began filing in at 11:33 a. m. (PDT).

The former justice department employee was tense as she stood up to receive the verdict.

"The defendant will rise," a marshal cried out.

Appeal Planned

Her attorney, Archibald Palmer, demanded that each juror be polled, and this was done by the clerk, Paul A. Roser.

Palmer announced that the verdict will be appealed to the U. S. circuit court of appeals, and if necessary, to the supreme court.

When the jurors had taken their places, Clerk Roser asked:

"Have you reached a verdict?"

"We have," Foreman Andrew H. Norford, 34, a telephone company employe, replied.

"What say you as to count one," the clerk asked.

"Guilty," Norford replied.

He made the same answer—guilty—when asked how the jury found on count two.

Miss Coplon, 28, a Harvard college honor graduate, will face trial in New York along with Valentine A. Gubitser, a Russian, on espionage conspiracy charges.

**18-Year Term**

Under count one of the indictment under which she was convicted today the maximum penalty is 10 years and \$10,000.

Federal Judge Albert L. Reeves denied a defense plea for a month's delay and indicated he would pass sentence tomorrow at 9 a. m. (EST).

She will remain free on bond at least until then.

That count accused Miss Coplon of taking secret reports from FBI files on counter-espionage and subversion with intent to benefit foreign power (Russia) and injure the United States.

The second count, with a top penalty of three years and \$2000, merely charged removal and concealment of such material and made no mention of an intended use for it.

Raymond P. Whorley, assistant chief of the justice department criminal division and a prosecutor in Miss Coplon's trial, told reporters: "We definitely intend to try the New York (conspiracy) case."

## Milk Price May Be Cut In Klamath

A cent-a-quart reduction in the retail price of milk may be in store for housewives here sometime after July 12.

On that date the state department of agriculture will conduct a public hearing to determine whether to grant a proposed reduction such as that which has already become effective in Portland.

The price of milk now is 20 cents a quart, and the state regulates the richness of the product. The proposal is to cut the price to 19 cents and loosen dairy restrictions to where a richer milk can be sold.

The price of whipping cream may also be reduced.

## HALF-YEAR BUSINESS REVIEW

### Klamath Business Firms Feel Economic Pinch

**By HALE SCARRROUGH**

The general and long-anticipated post-war slackening in business—sophistically called an "adjustment"—started in earnest during the first half of 1949 in the Klamath country, and more of the same is the prospect for the next six months.

Probably it will be a healthy decline; a real, grinding depression is a remote possibility. Almost as remote is the possibility of any quick return to the fast-money days of 1947.

The economy of the Klamath area as viewed by bankers, farmers and businessmen, is still sound but is merely returning to something of a normalcy after several abnormal years. The last really normal year was 1933, a decade ago and before World War II. Highs in almost every phase of the Klamath basin's economy were reached in 1947, farm incomes dropped off in 1948 and the general decline is now on.

Farmers generally have the feeling that their products are going to bring in less money next harvest time than last year, although it's

too early to begin pegging harvest-time prices now.

Barley last year was hurt by frost and much of the basin's crop was sold for around \$2.80-2.85, almost a 50 per cent comedown from the \$5 level reached for the 1947 crop. The expectation for this fall is for top grades of barley to bring a little better price than last year but for feed grains to display little strength.

The barley support price will be lower than in the past and from 10,000 to 15,000 acres of farmlands in this area have been converted from that grain to wheat, pasture and the like.

The support price in potatoes for the next harvest will be about half what it was last year and the market price may also go down accordingly, hurting the profitable second-year production.

Livestock prices hit their peak last fall and have done some leveling off to the point where the price of beef and pork is no longer a choice topic of conversation. Beef prices may not fluctuate much in the next six months, cattlemen feel, but a record crop of hogs going on

the market this fall may shove pork prices down and have some effect on beef.

The lumber industry, the other bellwether of prosperity or depression in this area, has been cooling off the past few months. Top grade pine lumber is still high priced and in good demand, but the market is way off for lower grades.

Wild bidding that for a time ran stampede prices to unprecedented figures, is a thing of the past and on a recent auction of easily accessible ripe pine near Bly there were no bidders whatsoever.

The discontinuation of the big Ewauna plant several months ago contributed its share to the decline of payroll in Klamath Falls and consequently was felt in business generally. Whether other mills will follow Ewauna remains to be seen.

One hopeful factor in the lumbering industry, however, was the recent agreement of operators and the CIO lumber workers for continuation of present (1948) wage minimums in the industry for another fall year.

Merchandise report considerable

optimism for continued good business the next six months, although most admit their dollar volume of business now is off 5 to 20 per cent from the first six months of last year.

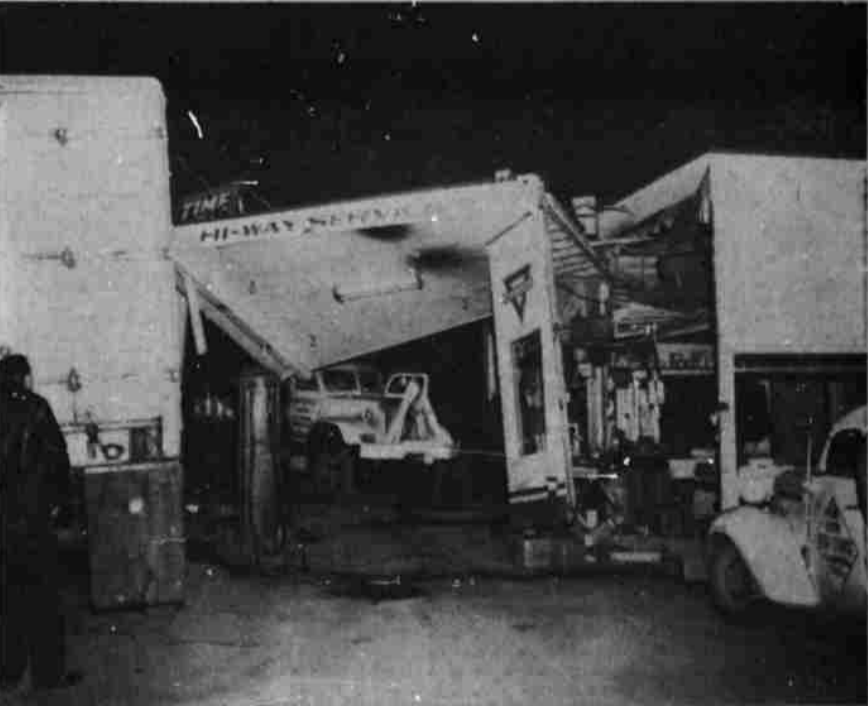
Fall and early winter months are usually good and store owners expect the usual upturn this fall.

Some businesses have been hurt already. Bankruptcies are becoming more frequent and the repossession rate of such expensive items as logging trucks, farm machinery and automobiles is beginning to climb.

The pinch this spring and summer has been in luxury lines and in the field of entertainment.

Bargains have to be more real and less synthetic to bring out the dollar now, although bank savings are still high enough to indicate that the slackening is not entirely due to decreased earnings. People still have the money but a measure of caution has set in.

The next six months probably will be a little tight all the way around: tight in view of the 1946-47-48 boom years, not in comparison with the last real period of normalcy a decade ago.



**SMASH—**A Spokane-bound freight truck played havoc with the Hi-way Service station near Ashland-Weed junction just west of town last night, as this picture shows. The truck, after gassing up, started to pull out, but the trailer swung too close to the canopy, caught it on a corner and yanked the whole front of the station out. Note the gaping hole in the station building at right. The truck is owned by the Peirone Produce company of Spokane and the station is operated by H. F. Butts, who had to call upon his ingenuity and a wrecker truck to untangle the mess without knocking down two pumps left standing after the smash. One of three pumps was knocked over.