

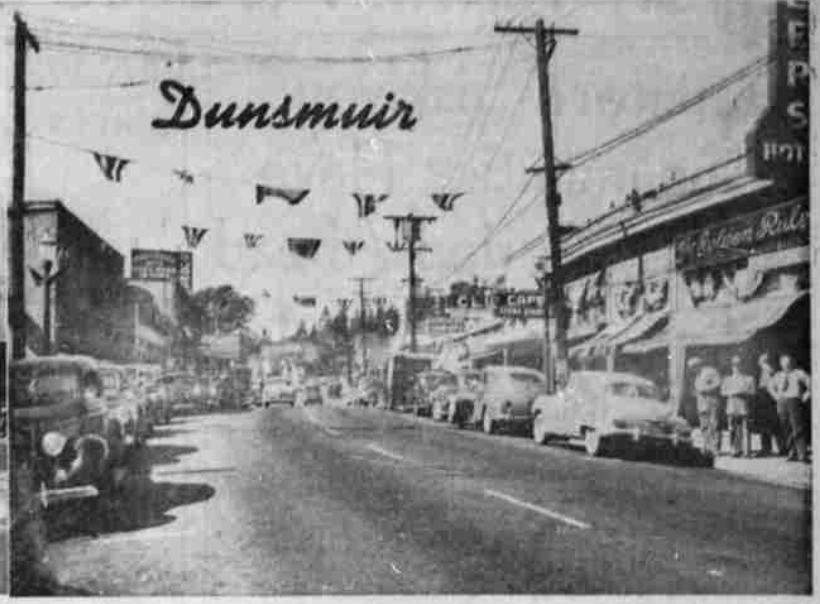
Klamath Falls Salutes Three Towns That Nestle At Base Of Mighty Mount Shasta



Weed



Mt. Shasta City

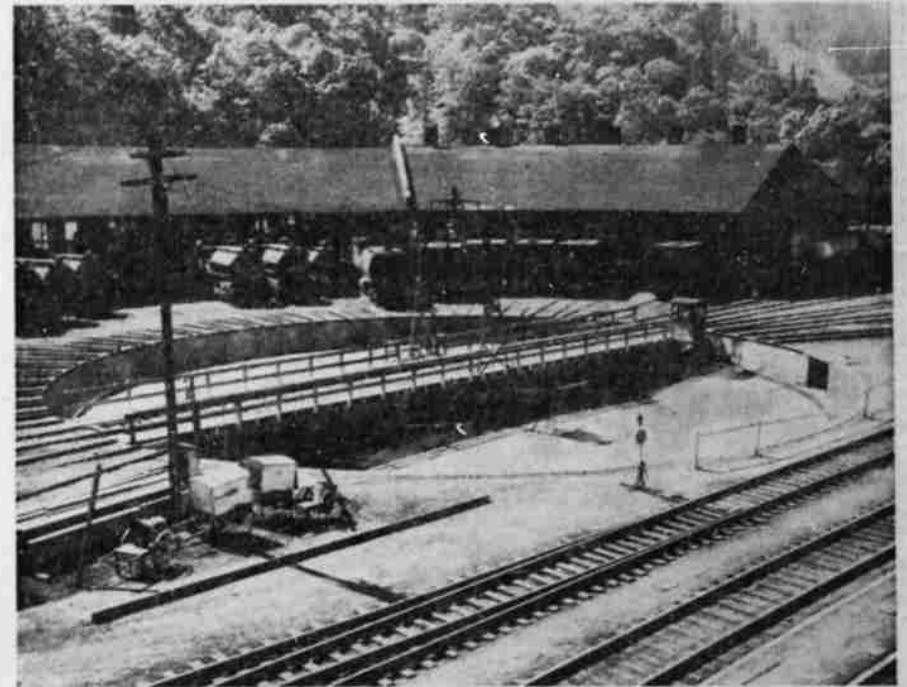


Dunsmuir

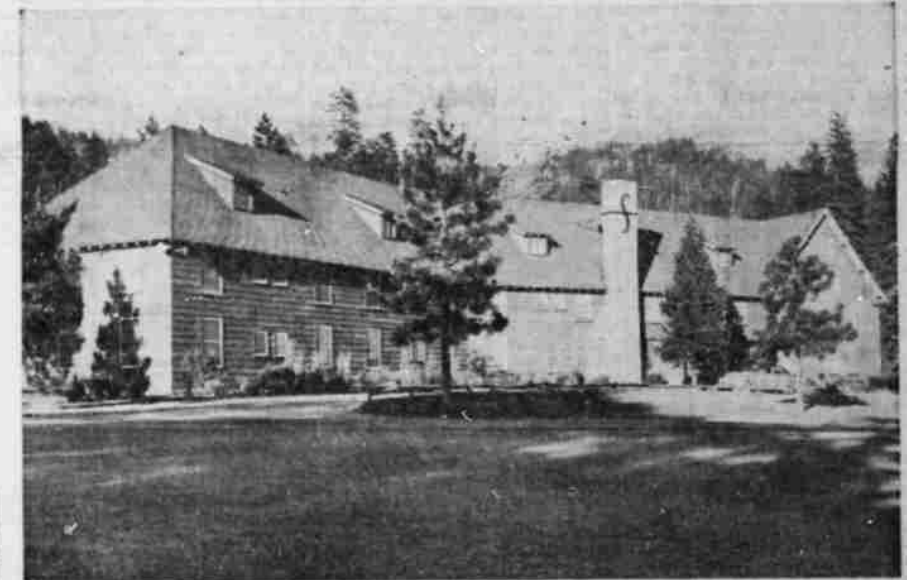
Here Are Main Street Scenes From June's Three Salute Towns



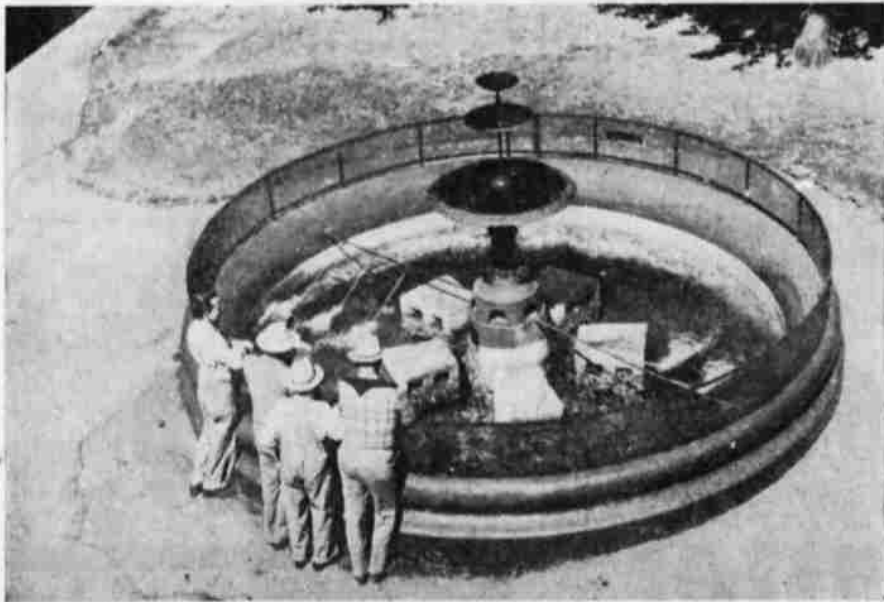
Towering Mt. Shasta (14,161 feet) Dominates the Salute Town Area. Picture made at Mt. Shasta City.



SP roundhouse and turntable at Dunsmuir.



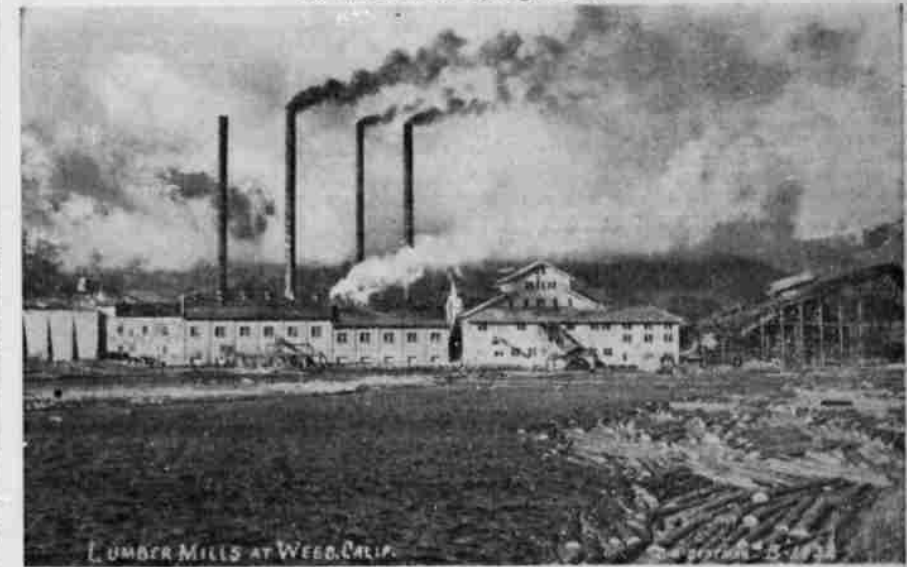
The inn at Shasta Springs resort.



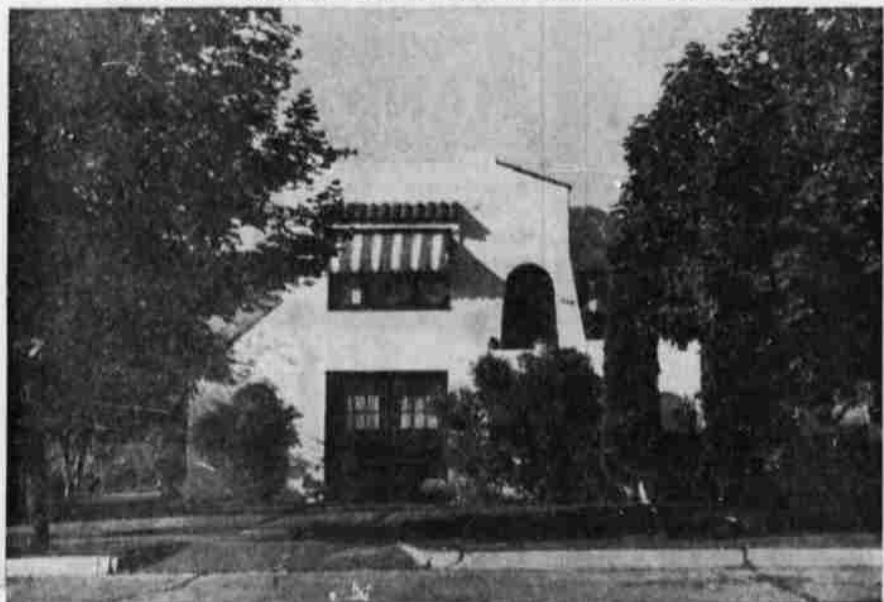
Fountain at Dunsmuir, given by man for whom town was named.



Vine-covered hillside residence at Dunsmuir.



LUMBER MILLS AT WEED, CALIF. Long-Bell Lumber company plant at Weed, one of the West's biggest lumber operations.



A Pleasant Home In Mt. Shasta.

ON this page are pictures illustrating the area around Mt. Shasta, home of the three towns selected for Klamath Falls' June salute.

With the exception of the bridge and mill scenes, all of the views were made by Herald and News Cameraman Wes Guderian on the Klamath Falls good-will trip to Weed, Mt. Shasta, Dunsmuir and Redding last week.

Mr. Shasta itself, which has been photographed thousands of times, was pictured especially for this purpose by Guderian from the edge of Mt. Shasta City, on the road to Panther Meadows, where a major resort development is projected.

The mill and bridge pictures were made by J. H. Eastman.



Pit river bridge, across arm of Shasta lake on US 99 and the SP.