

# Plaque To Be Dedicated At Gold Rush Day

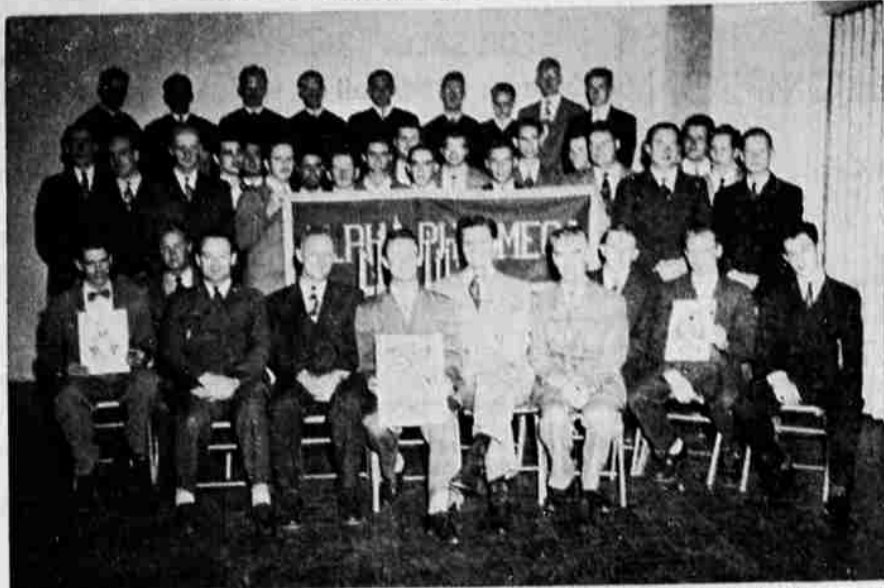
YREKA, May 31— One of the many events on the Yreka Gold Rush Days program that will be held June 24 through 27 is unveiling and dedication of the historical plaque commemorating the discovery of gold in the Yreka area in 1851. Then known as Thompson's Dry Diggings, the city name was later changed to Shasta Butte City and finally to Yreka. The unveiling program is in the hands of the Shastai County Historical Society of which Mr. J. H. Wales is president.

Other features of the Gold Rush celebration will be the Golden West Girl and her attendants; an up-to-date Gold Way; parades with a mammoth Historical Parade on Sunday, June 27; old-time and modern dancing; sheriff's posse competition; gold exhibits and other features that will round out a four day program.

The celebration is being sponsored by Ross Nelson Post No. 122 of the American Legion with the assistance of other civic and fraternal groups in Yreka. Fred M. Gardner and Pete Rowberry are joint chairmen of the entire affair and Mrs. Grace Cousineau is general chairman of the Ladies Auxiliary of the American Legion participation. Chas. J. Turle Jr., is chairman of the finance committee; Lloyd Johnson and Fred Van-Vliet joint chairmen of the parade committee; Dick Thompson, chairman of the publicity committee and Rox Cousineau is handling the Helldorado Camp.

Natural radioactivity of carbon atoms in the air, that become a part of all living structures, may enable archeologists to date ancient civilizations through a study of the radioactivity of skeletons.

# New Fraternity Organized At SOC



Alpha Phi Omega, a national service fraternity, has been organized at Southern Oregon college in Ashland. The SOC chapter is Zeta Xi, and John Heilbronner and Del Yantis, both of Klamath Falls, are among new members. Heilbronner was instrumental in organizing the new chapter. Degree teams from Willamette university and the University of Washington took part.

# Reunions Set For Week-End At University

UNIVERSITY OF OREGON, Eugene, May 31— Class reunions will feature the 71st annual commencement week-end, June 11, 12, and 13, at the University of Oregon, according to Lester E. Anderson, alumni director. June 12 has been designated as Alumni Day, he said.

Opening the activities of the week-end will be the annual Pauline Potter-Homer memorial tea in the library browsing room Friday afternoon. Saturday events will start with the traditional breakfast of the state association of University of Oregon women, when women of the 50-year class of 1898 and this year's senior women will be honored guests. The semi-annual meeting of the

Oregon Alumni association is slated for Saturday morning with a luncheon following in John Straub hall.

Outstanding event of Saturday is the ground-breaking for the Ebb Memorial union. This ceremony will be held at 3 o'clock in the afternoon. The president's reception for alumni will follow and in the evening class reunion dinners have been planned at local hotels. Graduates of '08, '08, '13, '23, and '28 will meet for these events.

Saturday evening will conclude with the Palling-Beekman orations. Dr. Henry N. Weiman, visiting professor of religion in the university, will address the graduates Sunday morning for the baccalaureate service, which will be held in McArthur court.

Open house is planned on the campus Sunday afternoon with museums and buildings open to visitors. The traditional flower and fern pro-

cession will also be a feature of the afternoon.

At 8 o'clock Sunday evening, more than 1100 seniors will form a professional for the commencement exercises in McArthur court. Dr. H. K. Newburn, president, will deliver the charge to the graduating class.

### NEW LIBRARY

The world's most complete library on rubber technology will be centered in the University of Akron's Bierce library, beginning with a complete file of journals in the fields of rubber, resins and plastics.

### TEATIME SNACKS

Pettis Fours for an afternoon tea crowd may be made from white or sponge cake baked in a jelly roll pan. When the cake is cool it should be cut into diamonds, squares, rectangles, circles or crescents and covered with a melted fondant colored in a pastel shade. Each small cake can then be decorated individually with a cake decorator in a variety of colors.

More than 1,600,000 American citizens are engaged in selling and servicing automobiles.

# Hit And Run Driver Held

Kyle Howard Molgard, 20, of 1242 Johnson, was tossed into the county jail early Sunday morning on a charge of failure to stop at the scene of an automobile accident.

Molgard was driver of a car which allegedly struck a vehicle owned by Kenneth William Pitts, route 3, Saturday night. The accident oc-

curred at Altamont and S. 8th. Pitts was able to get the license number of the sedan which struck his car, notified state police and Molgard was arrested at his home.

WASHINGTON, (AP)— Students estimate that use of rockets in research have brought more knowledge about the earth's upper atmosphere in the previous 20 years of study.

Ask for Golden value Golden flavor



# Golden Wedding

BLENDED WHISKEY • 45 PROOF • 70% GRAIN NEUTRAL SPIRITS • JOSEPH S. FINCH & CO., SCHENLEY, PA.

**Sicks' Select**  
6  
The Best Beer in Town

**Lubrication**  
IS THE LIFE BLOOD OF YOUR CAR



To Make Your Car Run Better - Last Longer Let us lubricate it regularly with Ford factory recommended lubricants.

- \* WASHING
- \* POLISHING
- \* SIMONIZING
- \* VACUUM CLEANING— Really gets the dirt!
- \* STEAM CLEANING— Motor and chassis. Latest type equipment.

**BALSIGER MOTOR CO.**  
Bring Your Ford HOME For Service!  
Main at Esplanade Ph. 3121  
Open 1:30 to 6 Daily; 1:30 to 4 Sat.

A talkative barber, who cuts hair in Gig Harbor, Is as happy as he can be, His customers say they can listen all day, When he says, "It's TWO-DEEP" for me!"

\* TWICE AS GOOD 5¢ THE DOUBLE RICH CHOCOLATE CANDY BAR

*Montgomery Ward*  
Store Hours: 9:00 a. m. to 5:30 p. m.  
9th at Pine Phone 3188  
Wednesday - Thursday Only

# Scatter Rug SALE!

## SHAG RUG

Cotton Loop Pile  
Turquoise, Red, Chartreuse, Blue, White  
24x36  
Reg. 4.95, Special **4<sup>27</sup>**

*Montgomery Ward*  
Store Hours—9 a.m. to 5:30 p. m.  
9th at Pine Phone 3188

# CHENILLE RUG

Reversible Patterns  
Three Colors: Blue, Red, Turquoise  
Size 24x32  
Reg. 3.19, Special **2<sup>88</sup>**

*Montgomery Ward*  
Store Hours—9 a.m. to 5:30 p.m.  
9th at Pine Phone 3188

# Colonial Braid Rugs

Oval Shape  
Colorful - Washable  
24x36  
Reg. 3.59, Special **2<sup>97</sup>**

*Montgomery Ward*  
Store Hours—9 a.m. to 5:30 p.m.  
9th at Pine Phone 3188

# Woven Pattern "Wheat"

Cotton Pile - 3 Colors  
Non-skid Coated Back  
Reg. 6.25, Special **5<sup>77</sup>**

*Montgomery Ward*  
Store Hours—9 a.m. to 5:30 p.m.  
9th at Pine Phone 3188

# CABIN PLAID

Colorful - Woven Stripe  
Red, Green, Blue, Rose  
Size 22x42  
Reg. 2.29, Special **1<sup>88</sup>**

Quality Photo Finishing At Your **KRYSTAL KOTE** DEALERS In at 9:00 . . . Out at 5:00 **UNDERWOOD'S** PHOTO SERVICE 211 Underwood Bldg. Phone 4819

The Famous French Toe Oxblood Oxfords by NUNN-BUSH are back. They're dressy! Since 1918 **Drew's** MANSTORE 733 Main

*Montgomery Ward*  
Store Hours—9 a. m. to 5:30 p. m.  
9th at Pine Phone 3188

# Rich pattern styling priced low!

Usual down payment, balance monthly

# New Styletone Broadloom in 4 colors

**5<sup>98</sup>** sq. yd. --- 9-ft. width

Buy Styletone carpeting at Wards tomorrow . . . you'll be as proud of it as we are! Its thick pile is 100% wool. Smart patterns and warm colors will harmonize with any furnishings. Compare the quality and price . . . you'll save on Styletone. Install it wall-to-wall today!

• 9x12 ft. size.....73.95 • 9x15 ft. size.....93.70

Ask For Wards Free Booklet On "How To Care For Your Rugs"

—Second Floor—

*Montgomery Ward*  
Store Hours—9 a.m. to 5:30 p.m.  
9th at Pine Phone 3188

# Tile floors last longer . . . cost less per year!

# 9-INCH ASPHALT TILES NOW IN ASSORTED COLORS

Low As **8 1/2<sup>c</sup>** Tile Dark Colors  
Low As **12<sup>c</sup>** Tile Lighter Colors

It's handsome, inexpensive . . . comparison shows tile floors wear two or three times longer than most floor covering. Constant traffic won't mar the beauty of colors and graining that go through the entire tile thickness. Wonderful for use in offices, halls and the only floor covering to use over basement cement. Come early!

USUAL DOWN PAYMENT, BALANCE MONTHLY  
\* Tile measures 9"x9".

—Second Floor—

*Montgomery Ward*  
Store Hours—9 a.m. to 5:30 p.m.  
9th at Pine Phone 3188

# Woven Pattern "Wheat"

Cotton Pile - 3 Colors  
Non-skid Coated Back  
Reg. 6.25, Special **5<sup>77</sup>**

# CABIN PLAID

Colorful - Woven Stripe  
Red, Green, Blue, Rose  
Size 22x42  
Reg. 2.29, Special **1<sup>88</sup>**

—Second Floor—