

Photographic History



Here It Is--The First Klamath Falls Sawmill

It was built by the Moore brothers, before 1890 and occupied a site on the west bank of Link river for more than 20 years.

Prior to the Moore brothers venture, the government had started a mill or two on the Indian reservation, but this was the first private enterprise mill—the forerunner of the big plants that later made industrial history in the Klamath country.

The picture is from the Baldwin collection, and was taken after a big pipe was laid along the east side of Link river for power purposes. The pipe can be seen in the picture.

The old Moore mill was a water-powered outfit. Not long after the picture was taken, about 1910, the Moore brothers built a new mill on Lake Ewauna between the lake and Riverside.

Some Demos Back Truman

WASHINGTON, May 22 (AP)—President Truman had evidence today that some of the southern democrats who have been battling his civil rights program still are willing to support him on other matters.

The evidence came in the form of 27 democratic senate votes which sustained his veto of a bill which would have permitted senators to order an FBI investigation of key atomic officials.

Two republicans—Langer of North

Dakota and Morse of Oregon—also went along. But as yesterday's count turned out their votes weren't needed to give Mr. Truman his first veto victory this year.

GOP leaders had counted on southern anger over the president's civil rights proposals to help them override the veto.

But only nine democrats joined the 38 republicans voting to override. That was four short of the necessary two-thirds majority.

Among those supporting Mr. Tru-

man's argument that the bill would invade his executive powers were such outspoken critics of his civil rights program as Senators Olin Johnston of South Carolina, Hill and Sparkman of Alabama and Stennis of Mississippi.

Leftover potatoes are delicious in an omelet. Dice the potatoes, then saute them, with a little chopped onion, in a skillet; add the omelet mixture and cook as usual.

MERRILL

A memorial is like a living thing of beauty, as, properly designed, it appears—as the trees, the flowers, and the grass—to be a beautiful masterpiece of the earth upon which it rests. Here, memories, like great oaks, flourish through the years.

KLAMATH MONUMENT CO.
320 NORTH 10th PHONE 8328

LOGGERS and SPORT BOOTS
with set-under heels made-to-measure by OTTO WHITE
Since 1918
Drew's MANSTORE
733 Main

THE Sportsman's Hotel
IN TULELAKE, CALIF., ANNOUNCES
DANCING Every Night Except Tuesday
IN THE NEWLY REDECORATED BANQUET ROOM

THE RIGHT SPOT FOR NIGHT GALETY!!
Music and Entertainment by the **Hollywood TRIO**

Phone 2501 for Reservations
Fine Foods
Prepared by our Famous Chef, George White

Motorists Will Just Have To Take It And Like It At Portland St. Crossing

Like the weather—folks are going to have to put up with it!

That was the consensus of opinion in regard to traffic conditions now existing at the Portland street crossing.

Since the Esplanade bridge crossing was closed and traffic routed via Hillside hospital and over Portland during the period of construction on the north entrance project, motorists have complained of waiting for freights held north of town before they enter the SP yards.

Robert Houck, SP's district freight and passenger agent, issued this explanation today.

"Southern Pacific freight trains entering Klamath from the north must stop at the 'home signal' before entering the yards.

Collision
"A number of years ago, before this rule went into effect, a freight train came down the grade and was put in on a track where a switch engine was working. It collided with the switch engine and two men were killed.

"As a result, we are now stopping all SP freights at the signal and turn up the air brake retainers on about 10 cars. This gives greater braking power and enables the engineer to better control the train.

"After that, and providing a track is available at the moment, the engineer is given a signal by one of the yard employees to proceed into the yard. Normally this operation takes from five to 10 minutes but sometimes, because the required track is in use, the train must be held a few minutes extra.

Safety Measure
"This situation will continue to exist as long as the construction is under way," Houck said, pointing out that it is purely a safety measure.

Passenger trains run on a time schedule, but Houck said freight schedules are flexible and no definite time of arrival of freights can be established.

Houck pointed out, however, that if freights cannot be received into the yard without a longer delay, they are not permitted to cross Portland but remain north of Portland until such time as given a

flashing white light or the come-on signal to proceed.

Even though the freights do remain north of Portland for the longer period, they still must go through the procedure as explained by Houck and hold up the Portland street motor traffic.

Truman Asks Alaska Work For Future

WASHINGTON, May 22 (AP)—President Truman Friday sent to congress a five-point program for the development of Alaska with a request that it be admitted to statehood "at the earliest possible date."

Asserting that Alaska has had territorial government for more than 35 years, Mr. Truman said that it has had "a sufficient period of preparation for its admission as a state."

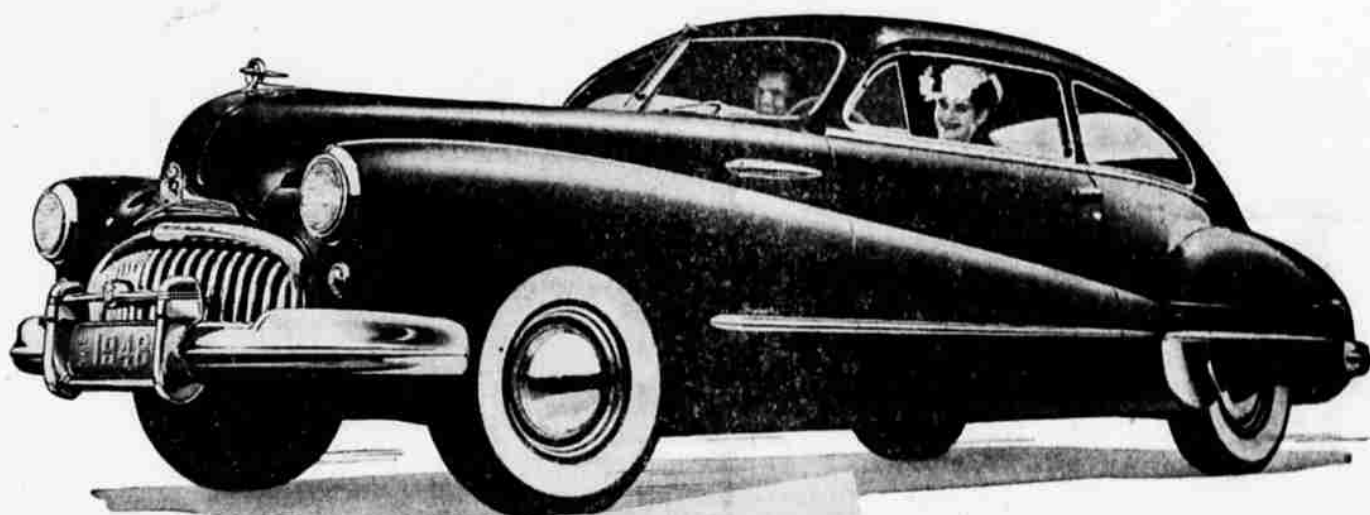
The program, in addition to asking for congressional action on statehood, calls for:

1. Improving the transportation system.
2. Construction of housing and community facilities.
3. Lands for natives.
4. Encouragement of land settlement.

The president asserted it is in the interest of the United States to assist in developing Alaska's known resources of food, timber and minerals and "to help open economic opportunities on a sound long term basis."

He said his recommendations would contribute to that program for a territory of 94,000 people and with a population still growing. He urged congress to enact legislation providing for statehood, noting that the house committee on public lands "has unanimously recommended such legislation."

Give a Fountain Pen For Graduation! Complete Stock's Sheaffer, Parker & Waterman, Pioneer Printing & Stationery Co., 122-124 S. 9th.



Its actions speak as loud as its curves

system of engine mounting to take engine sensation and vibration build-up out of your driving ken.

It was Buick, no one but Buick, who wrapped your ride in velvet, paved the roads with plush, and fired this whole gallant traveler with silken power ample enough and lively enough to make you monarch of any highway.

And you say you want thrills — you want fun — you want action.

Well, mister — just show some of the latter.

For if get-up-and-go is your dish — you'll get up right now and go see your Buick dealer about getting an order in, with or without a car to trade!

It was Buick, no one but Buick, who first floated each of all four wheels on a soft coil spring that's like a sofa cushion between you and the bumps.

It was Buick, no one but Buick, who first stepped out with Safety-Ride rims — rims made wider to lower air pressures and to give you better car control to boot — the widest rims in the industry, in fact.

It was Buick, no one but Buick, who spent the brain-sweat to develop Hi-Poised mounting — a completely new

"LOOK," this fellow said to us. "Anyone with half an eye knows your car's good looking."

"Anyone who ever stands on a street corner for half a moment knows it's big and slick looking and the easiest job of them all to spot."

"What I want to know is what will it do for me? What will I get out of it better than I get elsewhere?"

Well, mister! You left yourself wide open. Because any Buick owner will tell you —

It was Buick, no one but Buick, who put Fireball combustion under your bonnet to give you the liveliest, goin'est bundle of horsepower you ever put your treadle foot to.

When better automobiles are built

BUICK

will build them

BUICK alone has all these features

- * DYNAFLOW DRIVE (Patented) (Excludes Buick)
- * TAPER-THRU STYLING (Light and Roadster)
- * RIGID TORQUE-TUBE * ROAD-RITE BALANCE
- * DUOMATIC SPARK ADVANCE * SAFETY-RIDE RIMS
- * QUADRIFLEX COIL SPRING * VIBRA-SHIELDED RIDE
- * FLEX-FIT OIL RINGS * HI-POISED FIREBALL POWER
- * SOUND-SORBER TOP LINING (Patent Pending)
- * TEN SMART MODELS * BODY BY FISHER

HELP AMERICA PRODUCE FOR PEACE — TURN IN YOUR SCRAP IRON AND STEEL

Tune in HENRY J. TAYLOR, Mutual Network, Mondays and Fridays

H. E. HAUGER

1330 Main

"24 Years Your Buick Dealer"

Phone 515