

Special Speakers To Be At Presbyterian



DR. GEORGE L. PAIK



DON HORACIO GONZALES



PAUL R. ABBOTT, D.D.

Missionaries To Speak At First Presbyterian

Three outstanding speakers from the missionary field will speak at the First Presbyterian church, 6th and Pine, at 7:30 p. m. Wednesday under the auspices of the board of foreign missions of the Presbyterian church of the United States.

The guests will be Dr. George L. Paik, Ph. D., president of Chosen Christian university in Seoul, Korea; Don Horacio Gonzales of Santiago, Chile, and Paul R. Abbott, D. D., Christian missionary in China.

Wool Hits Top For \$2 Per Pound

NEW YORK, May 19 (AP)—Wool tops futures hit \$2 a pound Tuesday—the highest price since wool associates of the New York cotton exchange organized in 1931.

The \$2 price was reached by July and October deliveries, while top futures and wool futures generally slipped into new seasonal high

JOIN the DEWEY TEAM

Ed. Adv.—Dewey for Pres. Comm., 312 DeWitt Bldg., Portland, Ralph D. Moore, Ore. Mgr.

Police Officer May Have Creek Named After Him

WASHINGTON, May 19 (AP)—A police officer who walked the Union station beat in Portland, Ore., may have a mountain stream named in his honor.

The board on geographic names disclosed today it is considering a proposal that a two-mile-long stream flowing northwestward into Tide creek, in Columbia county, Ore., be named Endicott creek for officer Lawson Edward Endicott, who died in 1938.

The request came from Endicott's son, R. J. Endicott, of Deer Island, Ore., who owns land through which the unnamed stream passes.

The board said the Columbia county commissioners, Oregon State Engineers society and Oregon geographic board have approved the proposal. The board itself may take up the question at its June meeting.

The forest service in Oregon also has asked the board to name a peak in Whitman National forest for Albert G. Angell, who died in 1941, and falls on the South Umpqua river for Robert G. Campbell, an army flier killed November 12, 1944.

The proposed Angell peak, in the Blue mountains on the boundary between Grant and Maker counties,

15 miles north of Sumpter, has an elevation of 8675 feet. Angell was a ranger in the Whitman forest and was assistant supervisor at Deschutes National forest, and also served in the Portland office.

The tentatively named Campbell falls are five miles downstream from South Umpqua falls in Douglas county. Campbell was a ranger in the Umpqua forest from 1939 to 1943.

The forest service also recommended that the 1000-foot high rock bluff where North Umpqua river and Fish creek join, in Douglas county, be named Flatiron point.

Vote for ORMOND R. BEAN

A Good Companion!

A midnight snack will make all your friends sit up and take notice—if it's served with mellow Bond & Lillard! Enjoy the rich flavor of this smooth Kentucky whiskey, tonight!



NOW! \$3.60 4 1/2 qt. \$2.30 1 qt.

"Uniformly Fine Since 1863"

NATIONAL DISTILLERS PRODUCTS CORPORATION, NEW YORK, N. Y. - KENTUCKY WHISKEY - A BLEND - 90 PROOF - 65% GRAIN NEUTRAL SPIRITS

VOTE FOR Col. W. F. SWIGART for Republican Candidate for SHERIFF

He has pleased the people of Klamath County for 25 years as an outstanding auctioneer. If elected to this office, he will continue to please with an efficient, business-like administration.

Ed. Adv.—W. F. Swigart.

Vote For JACK FRANEY

Republican Candidate For SHERIFF

EXPERIENCED AND QUALIFIED

Ed. Adv.—Franey for Sheriff Club—B. L. O'Neill, Secy.

WAKE UP YOUR LIVER BILE—

Without Calomel—And You'll Jump Out of Bed in the Morning Rarin' to Go

The liver should pour out about 2 pints of bile juice into your bowels every day. If this bile is not flowing freely, your food may not digest. It may just decay in the bowels. Then gas builds up your stomach. You get constipated. You feel sour, sunk and the world looks pink.

It takes those mild, gentle Carter's Little Liver Pills to get those 2 pints of bile flowing freely to make you feel "up and up." Get a package today. Effective in making bile flow freely. Ask for Carter's Little Liver Pills, 32¢ at any drugstore.

SPRING PAINT-UP EVENT

NOW! Brighten your home the easy way...with fine GENERAL PAINTS

Furniture's like new refinished with FLEX

Amazing new Flex brushes on evenly—without streaks—and dries fast! 14 brilliant, long-lasting colors...4 lovely natural-wood stains. Perfect for furniture, toys, tools, most everything inside and outside.

\$2.19 Quat.

SASH AND TRIM COLORS for outside touch-up! \$2.10 qt.

Six brilliant colors that stay brilliant despite sun and rain. Won't fade or crack for years and years!

Beautiful floors with QUICK-STEP \$1.62 qt.

Made tough for rough wear. Withstands scuffing, kicking, scrubbing.

Porches stay bright with General Porch & Deck Paint \$1.61 qt.

Especially made for long service even where outside wear is greatest. Stands all kinds of weather. For wood, metal, concrete and canvas.

Sure way to keep kitchens sparkling...RAYONITE \$1.52 qt.

This unique high-gloss finish stays gleaming for years despite frequent washing. Perfect for the kitchen, bathroom, bedrooms.

Finest house paint you can buy!

Ask your painter! It covers better—goes farther—keeps your house looking "new" far longer!

GENERAL'S 100% PURE PAINT \$5.83 Gal.

Clean old brushes like new!

Ready to use over and over! This wonderful liquid puts old brushes back into service! RENU-A-BRUSH 55¢ pt.

NOW! See your nearby

GENERAL PAINT DEALER

General Paint Store

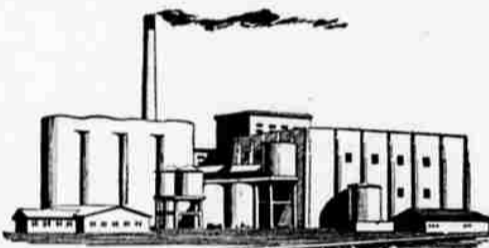
515 Main St. Phone 3829

Van Meter Hardware, Malin

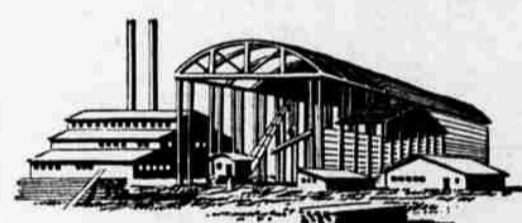
Arney's Paint & Hardware, Lakeview

Favil West, Tulelake

OUR NEW PLANTS WILL PERMIT GREATER FOREST CROP UTILIZATION



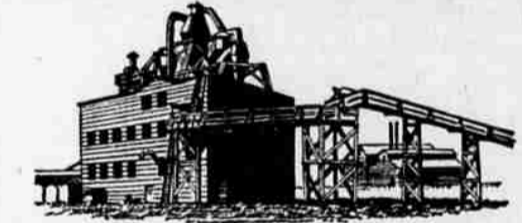
A NEW sulphate pulp mill at Longview, Washington, to process milling and logging left-overs. Will employ 250 men, and is expected to begin operation this summer.



A NEW plant at Springfield, Oregon. Will include sawmill, planing mill, dry kilns and container board factory, furnishing employment for several hundred people.



A NEW plywood plant at Longview, Washington, began operating in December, 1947. This plant is now undergoing further expansion. It will ultimately employ 325 people.



A NEW bark products plant in Longview, Washington, began operating in June, 1947. Represents an important step toward making some of the bark—former total waste—into useful products.

LAST YEAR this company's expenditures for plants were \$18,500,000, and we will invest \$28,000,000 more in similar construction during 1948-49 if the work can be accomplished. (Above are shown the types of plants for which this money is being spent.)

For some time our company has been developing a whole crop utilization program. We are building diversified manufacturing plants needed to get maximum use and dollar value from each tree grown. We can build these permanent plants because each millsite we are developing is supported by tree farms of sufficient acreage to provide a continuous timber supply forever.

We are living in an inflationary period. Everything is higher than ever before—sales, wages and profits. Industry's cost of living has increased right along with that of the individual. But in these times of surplus deflated dollars, we must give thought to tomorrow's competitive market.

As a private enterprise, looking at it from this long-range view, we believe it is good business to expand our plants now—even though costs are high. We believe our whole crop utilization program will ultimately earn steadier profits from the timber harvest. At the same time it will make more permanent jobs, help give stability to the communities in which we operate, increase the number of useful forest products, and provide a dependable tax source to government. We believe this policy is sound in its service to all.

1947 HIGHLIGHTS

about Weyerhaeuser

- Total Sales . . . . . \$102,551,190
Total Regular Personnel . . . . . 7,080
Total Taxes Paid . . . . . \$17,201,323
Taxes Paid Per Employee . . . . . \$2,415
Average Earning of Hourly Employees \$3,209
Dividends Paid per Share of Stock . . \$3.00
Of Total National Soft Wood Lumber Production, we made approx. . 4%
Of Total Commercial Forest Lands in Oregon and Washington we own approximately . . . . . 5%



WEYERHAEUSER TIMBER COMPANY

WORKING IN THE PACIFIC NORTHWEST TO CREATE PRODUCTS, PAYROLLS AND PROFITS

