

# Teen-Age Center To Open Saturday In New Quarters At 228 North Eighth St.

Triumphant after a struggle with many odds, Klamath Basin Teen-agers will open their center at 228 N. 8th at 7:30 o'clock tomorrow (Saturday) night. Open house will be held by the young people for adults from all over the Klamath country.

This non-profit youth corporation will continue to play host all through the following week and will be at home to the public from 10 to 11 p. m., each day except Sunday. Regular activities for the "kids," such as ping-pong, dancing classes and special crafts, will open the following week.

Radio station KFLW will conduct a special spot broadcast at 8:30 o'clock Saturday night from the center. The Teen-age broadcast from 10 to 11 p. m., Saturday, over KFLW will feature the opening of the new center, also.

The freshly painted and renovated center, whose location was made available to teen-agers in the Klamath basin through the generosity of Mr. and Mrs. R. P. Oliver, will be directed by Bill Procter, ex-University of California student in recreation. Mr. Procter has headed the project since January of this year.

Many Obstacles  
"We ran into so many obstacles," said Mr. Procter, "that we were often discouraged, but the fact that the teen-agers wanted the program and wanted it badly, was the big factor which caused us to win out."

The object of the organization is to furnish wholesome recreation and entertainment for teen-age youth, according to the by-laws of the organization. The program, planned by the teen-agers themselves, will be non-sectarian, with no political affiliation, but will promote American ideals.

The center consists of six large main rooms with several smaller auxiliary rooms, a foyer and hallways. The lounge, furnished with sturdy easy chairs and lamps, has a fireplace. Two rooms are for games and game tables. A large room which extends across the entire back of the building is to be used for dancing. It is equipped with a piano. A phonograph of the "juke box" type which is placed in this room was furnished by the Veterans of Foreign Wars. A check stand for coats and hats is located off the foyer.

The center is well lighted, and teen-agers have been working all week cleaning, washing windows, arranging furniture and preparing for their opening. The Leach Service company and Local No. 612, IWA, CIO, are responsible for the electrical lighting system.

Floors are of newly-laid tile. The kitchen is completely equipped for operation of the snack bar, which the young people will run themselves in accordance with existing sanitary codes. A large refrigerator was given for the kitchen by the Teamsters Union and a hot plate by the South Sixth street merchants. The kitchen has been further equipped by the Sacred Heart academy mothers. Women of the Community Congregational church made dish towels on which they embroidered their names.

There is also a freezer for storing ice cream, milk and meat, and a Coca-Cola vending machine in the kitchen, according to Mrs. Einar Brandness, adult adviser for the kitchen committee, as well as dishes, silver cooking utensils and such.

The equipment for most of the remainder of the center has been made available to teen-agers by their parents and friends. The Eagles lodge and Shepherd Music company have furnished them with a combination radio-phonograph, Mrs. Frank Tarr, adult adviser for the interior decoration, said. Draperies were a gift of Lake o' the Woods resort.

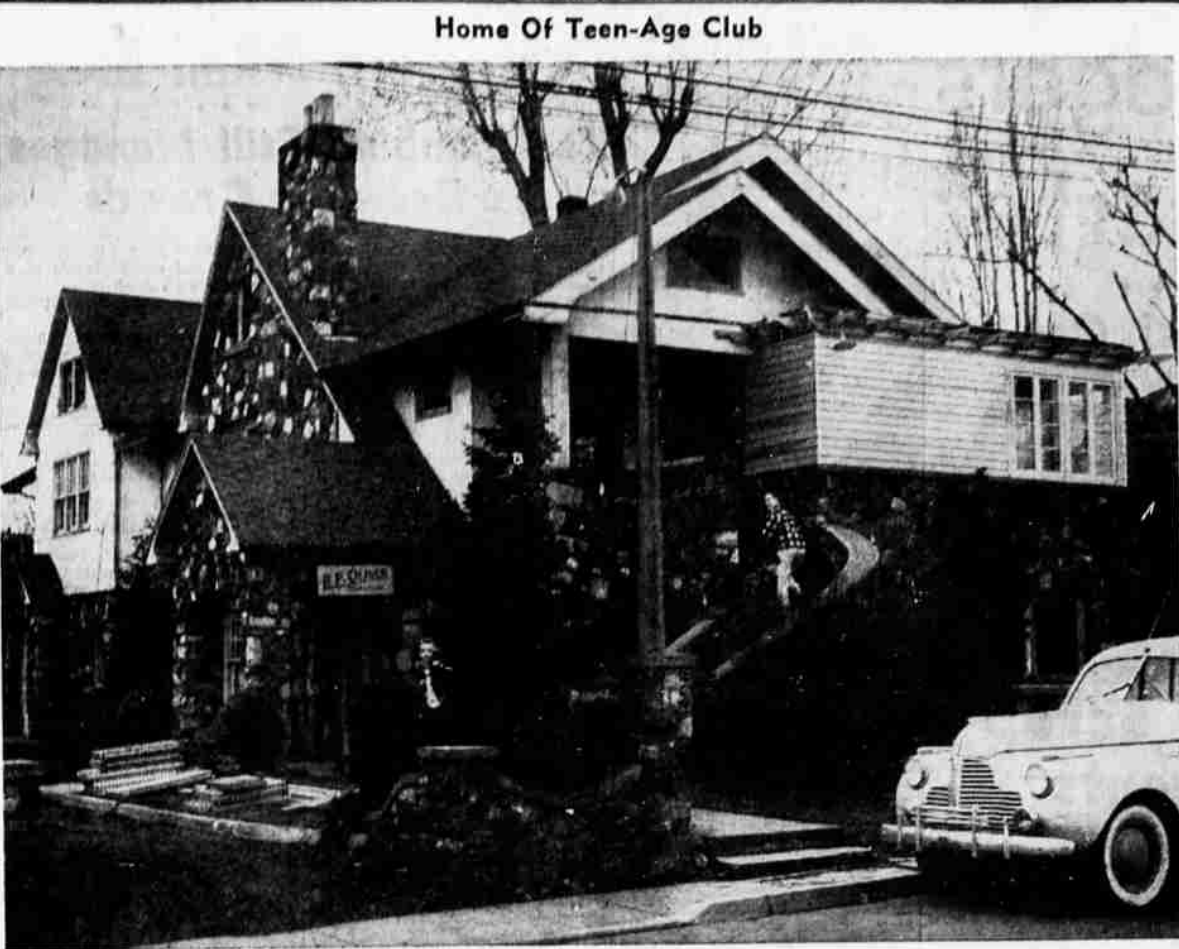
Unions Helped  
Without the aid of the carpenters, painters and laborers unions, who contributed all of the labor, and that of other unions and business firms which furnished essential material, the opening of the center would have been delayed many months, according to Matt Finnigan, chairman of the adult advisory council.

Teen-agers, aided by their adult advisers, began working toward establishment of their new center in January of this year. Though teen-age organization in Klamath Falls had its beginnings during the war years, it was hoped at first to use one of the surplus buildings from the naval air station as headquarters for the center, but the "kids" had a big disappointment when they found that the proposed building would not meet requirements of the city fire code. When the Olivers came to their rescue with the present headquarters, there was still the problem of funds.

The Footprinters, local organization, then sponsored the scrap metal drive, which has been on for two and a half months and will continue indefinitely. The K club at Klamath Union high school was the cooperating sponsor of the drive among the teen-agers, though young people from all over the basin have helped to collect scrap each Saturday, in good weather or bad, and after school hours.

Incorporated  
Organizations and business firms, labor unions and private individuals showed their interest immediately with donations of material, cash and work. Teen-agers, themselves, have done the greatest part of the work involved in organizing and preparing their center, and will "run things" themselves, according to Procter.

"The kids realize that they were instrumental in building their own center, and there is no doubt in their minds that it will be a success, since it is what they want," Procter stated.



Here is the new home of the Klamath Basin Teen-Age club, on Eighth street between Pine and High. The establishment will open Saturday.

club and wish to re-enter, must have written permission from the director. Those failing to cooperate with these rules will be referred to the joint committee for action by the Teen-Age council."

The center will not be open after 10 p. m. at night on any school night, or at any time except for special occasions, members said.

The center is open to membership of all teen-agers in the Klamath basin. Membership cards are issued twice a year, May 1 and November 1 at a nominal cost. Cards may be revoked by the joint committee. If the teen-ager has no money for his card, he may earn the card by working in the center two hours, at the discretion of the director. If the card is lost, the price of a new card is one-third of the original membership fee.

Guests  
Before receiving a membership card the teen-ager must fill out a file card which must be signed by his parent and guardian. This file card will be kept in confidence at the center at all times. Each member will be allowed 12 guests during the six months that he has his membership card. Guest badges and free passes may be obtained from the chamber of commerce, recreation office and Teen-Age office at the center.

Activities of the center will be ping-pong, pool, dancing, social games, parties, radio programs, dancing classes, picture shows, special arts and crafts and any other wholesome activities that will be of interest to the teen-ager. The center plans to have its own band, barber shop quartet, glee club and any other organized group that will be of interest to the members and an asset to the center.

Elected representatives of each teen-age group in the Klamath basin make up the Teen-Age council. Members hold office for a year. The council meets the first Monday of each month to discuss problems of the center and plan the program.

The joint committee, composed of the four officers of the Teen-Age council and four adult members of the board of directors, with the Teen-Age director acting as chairman, is the governing body of the corporation. This group will have the right to bar any teen-ager from the club if necessary.

Each member will have his membership card with him before entering the center.  
Each member must sign in before entering the club and sign out before leaving.  
Between the hours of 7:30 and 12 midnight, teen-agers who leave the

## Home Of Teen-Age Club



Here is the new home of the Klamath Basin Teen-Age club, on Eighth street between Pine and High. The establishment will open Saturday.

Bill Procter, director of the center, did recreation work with the army air corps in convalescent hospitals during the latter part of the war, having served on hospital ships after his induction into the armed service. Before he went into the service he worked for the Richmond, Calif. recreation department, and following his discharge from the armed services he returned to the University of California to continue his studies in recreation.

Swegle, was here on a school picnic. With five others, she went into the water on an outgoing tide. Mary Tempia, Route 1, Woodburn, and Frank Fritzie, Salem, said they saw the girl go under. Fritzie said he tried to get her to safety, but was thrown back by the surf.

The girl, whose home was in Wecoma, Ore., May 7 (AP)—Geraldine Bales, 14, a student at Sacred Heart high school in Salem, drowned in the Pacific ocean off Wecoma beach yesterday.

Next GEM Game, May 8

## Salem Student Drowns In Surf

WECOMA, Ore., May 7 (AP)—Geraldine Bales, 14, a student at Sacred Heart high school in Salem, drowned in the Pacific ocean off Wecoma beach yesterday.

## Army Planes Visit Lakeview Airport

LAKEVIEW, May 7.—Two L-4's, army liaison planes, are at the Lakeview airport to give members of the local Civil Air Patrol orientation flights as a part of their training program. The planes will be here for two weeks.

## Lakeview Lions Sponsor Show

LAKEVIEW, May 7.—At least 15 or 20 acts will be presented in the first annual variety show to be sponsored by the Lions club and auxiliary at the high school Monday and Tuesday nights, May 17 and 18, to benefit the club's eyeglass fund.

Right! Some lucky family is going to collar a cool \$25,000 Cash! That's the grand pay off among 40 Family Sweepstakes Prizes in Pepsi Cola's terrific "Treasure Top" Sweepstakes and Conte's. It could be your family—every entry\* you send in wins you points for the Family Sweepstakes Prizes. So enter on—get your whole family started! 51 Cash Prizes each month in your state—plus big Monthly National Prizes! Total Cash Prizes \$203,725.00!

Here's fun for everybody... looking for "Treasure Tops"—Pepsi-Cola bottle tops with hidden designs under the cork. Collect 'em... swap 'em... get a complete set.

\*Entries should be complete and accompanied by a "Treasure Top"

GET ENTRY BLANKS AT YOUR STORE

Franchised Bottler: Klamath Falls Pepsi-Cola Bottling Co.

Under appointment from Pepsi-Cola Company, N. Y.

Big \$25,000.00 CASH PRIZE IS TOP CONTEST AWARD!

Great Pepsi-Cola Contests Offers Your Family Chance At \$25,000.00 Prize!

Every entry gets a certificate for the Family Sweepstakes

hidden designs under the cork. Collect 'em... swap 'em... get a complete set.

GET ENTRY BLANKS AT YOUR STORE

Franchised Bottler: Klamath Falls Pepsi-Cola Bottling Co.

Under appointment from Pepsi-Cola Company, N. Y.

Big \$25,000.00 CASH PRIZE IS TOP CONTEST AWARD!

Great Pepsi-Cola Contests Offers Your Family Chance At \$25,000.00 Prize!

Every entry gets a certificate for the Family Sweepstakes

## Price Support On Flax Denied

PORTLAND, May 7 (AP)—The Oregon request for price support on 1947 and 1948 flax fibers has been denied by the department of agriculture.

This was announced here by the state production and marketing administration, which had recommended that the price support be continued.

The PMA said support for the 1946 crop will end June 30. By that time, it was estimated, the government will have taken over about 1,500,000 pounds of the fiber—purchased at support price. It will be re-sold to manufacturers at a lower price.

Turn those no-longer-used articles into cash now! Herald and News Want Ads are inexpensive and bring quick results.

**OIL**  
Prompt Delivery  
Convenient Credit  
Courteous Service  
Phone 5149

**PEYTON & CO.**  
Since 1911

# DANCE at MALIN

Saturday, May 8

MUSIC BY Pappy Gordon

DANCING 10 TILL 2

## Look to Suburban for ACME SEMI-GLOSS

Complete your Kem-Tone COLOR SCHEME with ACME SEMI-GLOSS FINISH

"Just what we needed!"

Here's the latest decorating news for home-owners! Now we have a selection of paints to complete your Kem-Tone color scheme. Durable, quick-drying Acme paints for furniture, woodwork, walls and trim—in tints and colors selected by America's foremost interior decorators to match, harmonize, or contrast with Kem-Tone color!

For kitchen and bathroom walls and woodwork—or any room—ACME Semi-Gloss gives a smooth, satiny finish. Impervious to grease and dirt, and can be easily cleaned without losing its luster! Come in today and see the glorious new decorator-chosen colors! Gallon \$4.79

## SUBURBAN LUMBER CO.

"Your Norge Dealer"

Phone 7709 4784 So. 6th

# TOMORROW NIGHT ARMORY

Capital Records' Star, Whose Record of "Smoke! Smoke! Smoke!" Became the Nation's No. 1 Record for 1947.

## TEX WILLIAMS

In Person With His Entire WESTERN CARAVAN

Featuring Those Comics, Deuce Spriggins and Smoky Rodgers: The Original Yodeling Fiddles: Steel Guitarist, Joaquin Murphy: Smilin' Johnny Weise and a Host of Others.

DANCING 9 'TIL 1 — DOORS OPEN 8:30.

ADULTS \$1.50 — CHILDREN UNDER 12, 74c

TICKETS ON SALE AT DERBY'S MUSIC CO.

BROADCAST 9:30 - 10:00 over KFLW

Tex Williams Hit Records Of The Past Year:  
\* "Smoke! Smoke! Smoke!"  
\* "Never Trust a Woman"  
\* "Happy Birthday Polka"  
\* "That's What I Like About the West"  
\* "Roundup Polka"  
\* "Tell a Woman"  
\* "Suspicion"  
\* "Slap 'Er Down Again, Paw"  
\* "Features Smoky Rodgers"  
\* "Flo, From St. Joe, Mo."

## WE WISH TO THANK MOST SINCERELY THE FOLLOWING FIRMS

And People That So Generously Gave Their Time and Efforts to The Completion of the TEEN-AGE CENTER 228 North 8th Street

We also wish to thank the hundreds of unnamed citizens and students who assisted in furthering this additional step toward a GREATER KLAMATH BASIN.

### JUNIOR COUNCIL & ADULT COUNCIL KLAMATH BASIN TEEN-AGE CENTER

KFLW KPLW Herald-News W. D. Miller Hellbronner Fuel Perrin, Architect Harvins Jeweler Derby Music Shepherd Music Leach Electric Oliver Real Estate Evaus Electric OVS Willard Hotel Newcom Palmer Co. Kuhlman Insulation Co. General Paint Goeller's Paint Driftwood Club Hap David Northwestern Theatre Co. Lorenz Co. S. H. Academy Mothers' Club "K" Club Pep Peppers Sessler Brothers Juckeland Motors Fred E. Barnett Dan Gilbert Long Bell Lumber Co. Patterson Furniture Davis Floor Covering Oregon Equipment Copeland Lumber Co. Big Basin Lumber Co. Builders Lumber Co. Drake Lumber Co. Home Lumber Co. Klamath Valley Lumber Co.	Suburban Lumber Co. Swan Lake Moulding Palmer Lumber Co. Bells Hardware O. K. Transfer Balaliger Motor Co. Rickys Jeweler Matt's Sporting Store Footprinters Club 20-30 Club Eagles Moose VFW American Legion Hanson's Market Fagly Wigly Shipping Guide U. S. National Bank Lost River Dairy Coca-Cola Co. Pioneer Tobacco Carl Steinseifer Klamath Billiard Shaw Stationery Loomis Glass Kimball Glass Glass House Klamath Cabinet Co. West-Hitchcock Business and Professional Women Lawrence Slater KUBS SHA Tulelake High Lake o' the Woods Resort Women of the Moose FOE Auxiliary	American Legion Auxiliary O. E. Moen Teamsters' Union Daw Ellert Wednesday Club Culinary Alliance Luca Cafe United Brotherhood Joiners & Carpenters Tik-Tok Cafe Ed. Boothby Service Station Lee Hendricks Drugs T. C. Griggs Model Cleaners J. B. Rouse Mobile Service Glenn Volz Buffalo Lunch K of C Three R Club Royal Neighbors of America VFW Auxiliary Kappa Chapter of Beta Sigma Phi Roosevelt PTA St. Paul's Auxiliary Mason Ehrman Hick's Grocery Service Kohn's Flowers Klamath Flowers Painters Union Laborers Union Klamath Furniture Adairs Furniture Lucas Furniture Mrs. Sam Ackerman Pine Street Market Emil's Food Stores Local 612 IWA-CIO
---	---	---